

Agency Overview

1

Joint Labor, Health and Social Services
Interim Committee Meeting

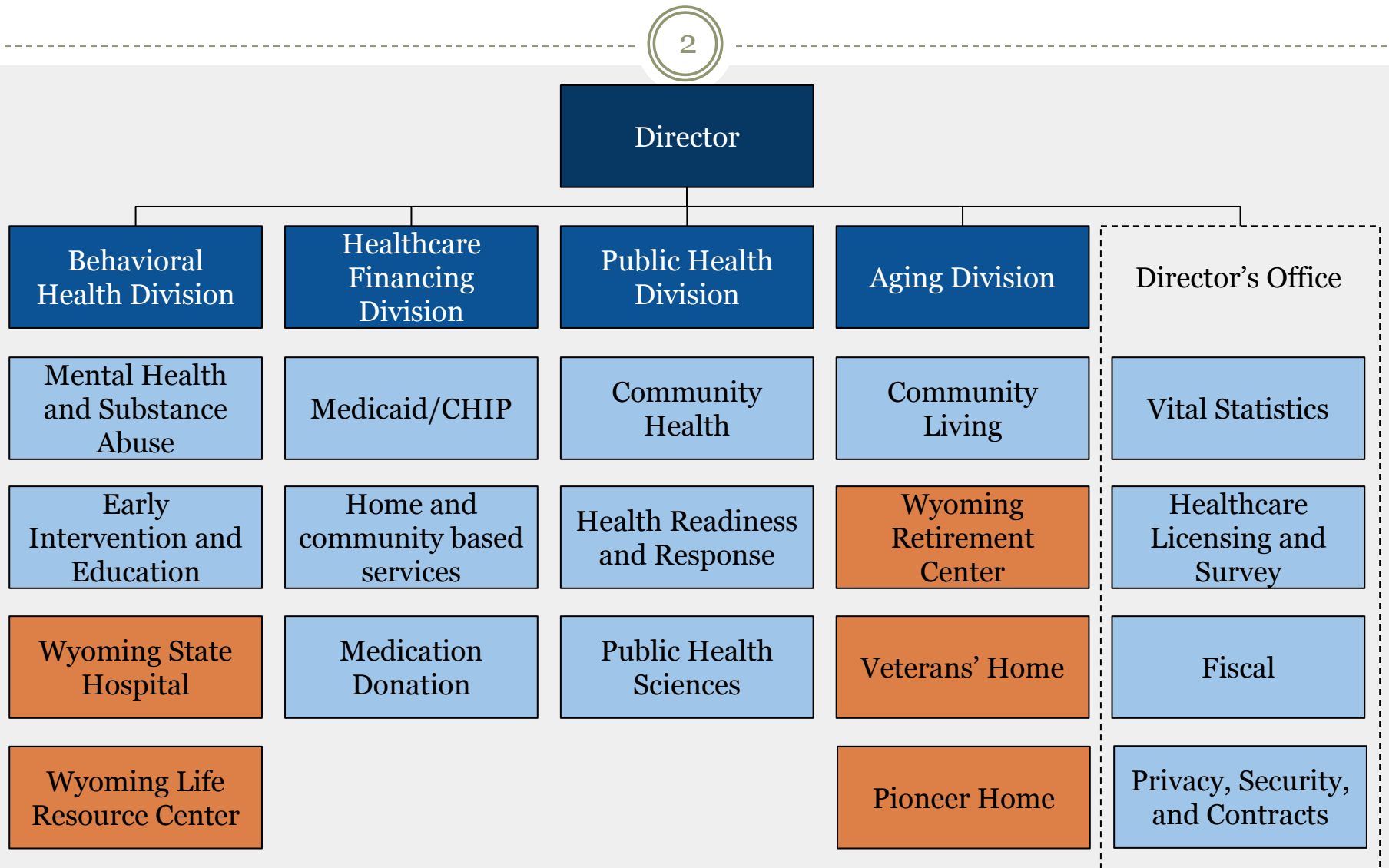


Wyoming
Department
of Health

June 23rd, 2025

Administrative Structure

2



Mission

3

Promote, protect, and enhance
the health of all Wyoming
residents.

Mission - functions

4

- **Provide direct health care services**
 - Safety-net facilities
 - Public health nursing, home visitation
- **Pay community providers for medical and long-term care services**
 - Medicaid
 - Behavioral health
 - Senior centers
 - Early intervention and education
- **Core public health activities**
 - Epidemiology, immunizations, laboratory
 - Vital records
 - Prevention, preparedness
- **Health care regulation**
 - EMS, health facilities

Budget by function

5

Function	SGF	FF	OF	Total	Pct.
Administration	\$51.1	\$77.4	\$2.3	\$130.9	5.8%
Community services	\$614.6	\$860.1	\$99.7	\$1,574.4	70.2%
Direct care	\$320.7	\$40.6	\$97.0	\$458.2	20.4%
Healthcare regulation	\$2.7	\$5.0	\$0.0	\$7.7	0.3%
Public health	\$15.3	\$42.9	\$15.0	\$73.1	3.3%
Total	\$1,004.4	\$1,026.0	\$214.0	\$2,244.3	100%

Direct Care: Facilities

6



Wyoming
Department
of Health

Department of Health Facilities

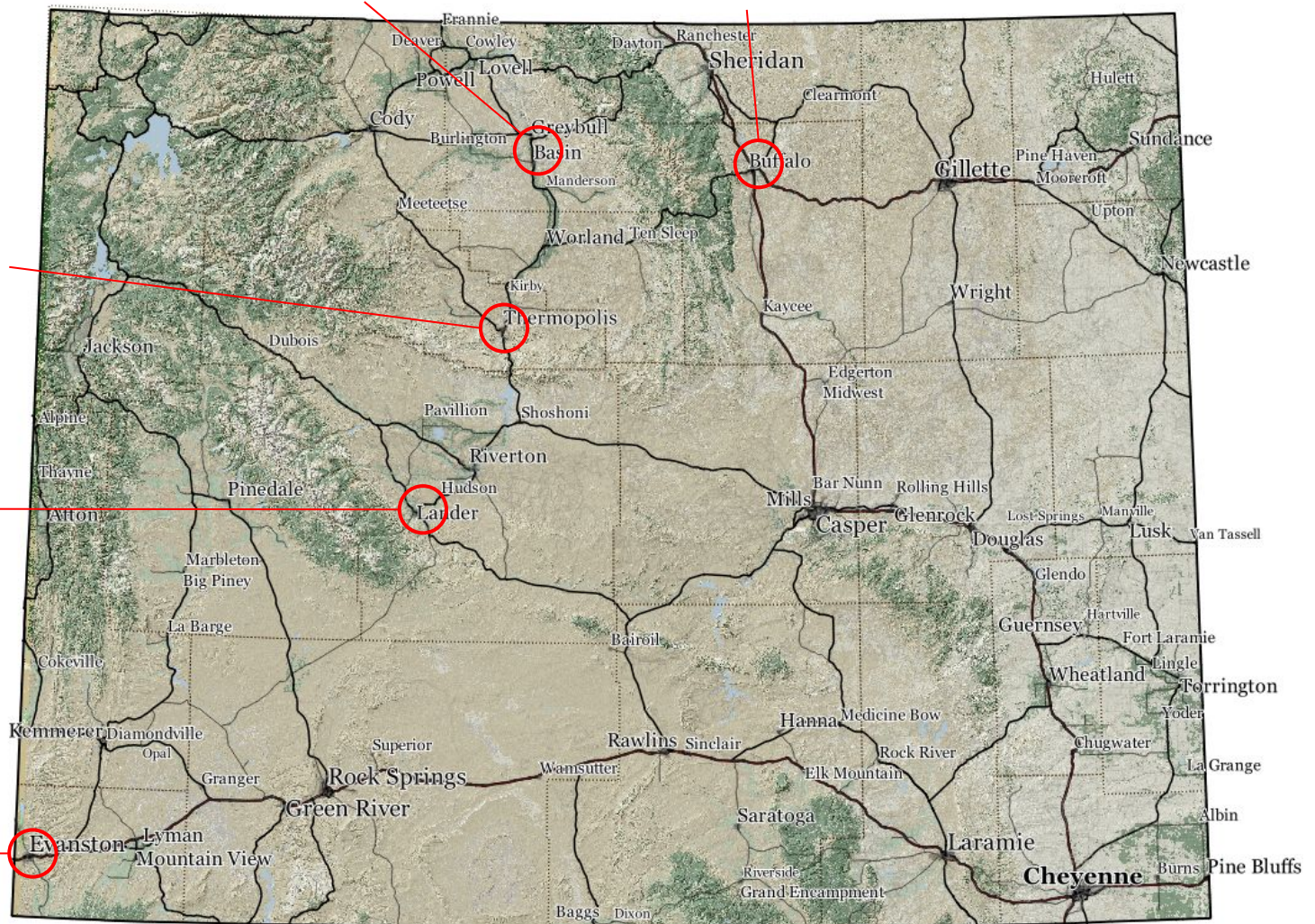
Wyoming Retirement Center (WRC)

Veterans' Home (VH)

Pioneer Home
(PH)

Life Resource
Center (WLRC)

State Hospital
(WSH)



Wyoming State Hospital

8

Psychiatric hospital (Evanston, est.)

- **Staffed capacity:** ~ 80 beds (250 FTE)
- **Census:** 80
- **Budget:** \$91M biennial
- **Primary issues:**
 - Nurse staffing
 - Difficulty in discharging to lower levels of care

Wyoming Life Resource Center

9

Intermediate Care Facility (ICF) and Skilled Nursing Facility (SNF) (Lander, est.)

- **Staffed capacity:**
- **Census:** 48 (35 ICF, 13 SNF)
- **Budget:** \$65.6M biennial
- **Primary issue:**
 - Direct service professional staffing
 - Difficulty in discharging to lower levels of care

Wyoming Pioneer Home

10

Assisted Living Facility (Thermopolis, est. 1946)

- **Staffed capacity:** ~ 50 beds (30 FTE)
- **Census:** 47
- **Budget:** \$5.3M biennial
- **Primary issue:**
 - Reliant on SGF subsidy (~75% of funding)

Wyoming Retirement Center

11

Skilled Nursing Facility (Basin, est. 1927)

- **Staffed capacity:** ~ 90 beds (95 FTE)
- **Census:** 72
- **Budget:** \$13.8M biennial
- **Primary issue:**
 - Reliance on contract labor (>50% of workforce)

Wyoming Veterans Home

12

Assisted Living Facility (Buffalo, est. 1903)

- **Staffed capacity:** ~ 75 beds (46 FTE)
- **Census:** 57
- **Budget:** \$7.8M biennial
- **Primary issue:**
 - SGF subsidy (VA per diem for domiciliary care is low)
 - Reliance on contract labor

Wyoming Veterans Home - Skilled Nursing

13

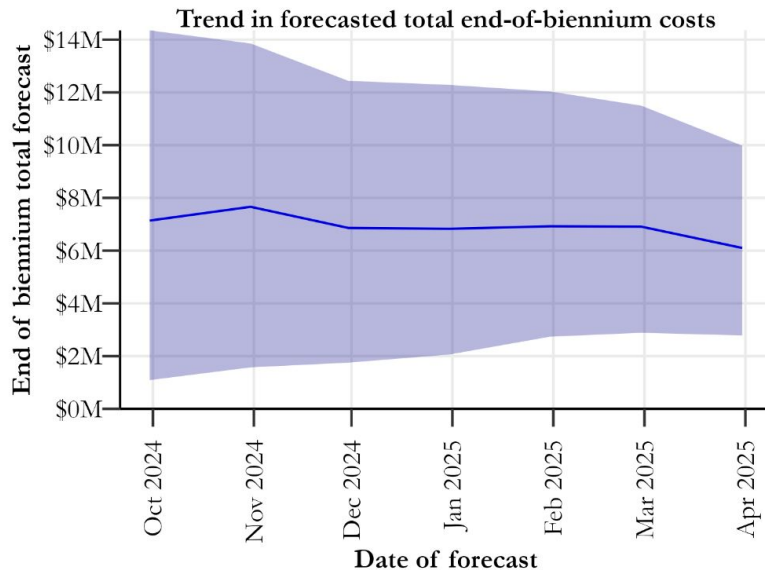
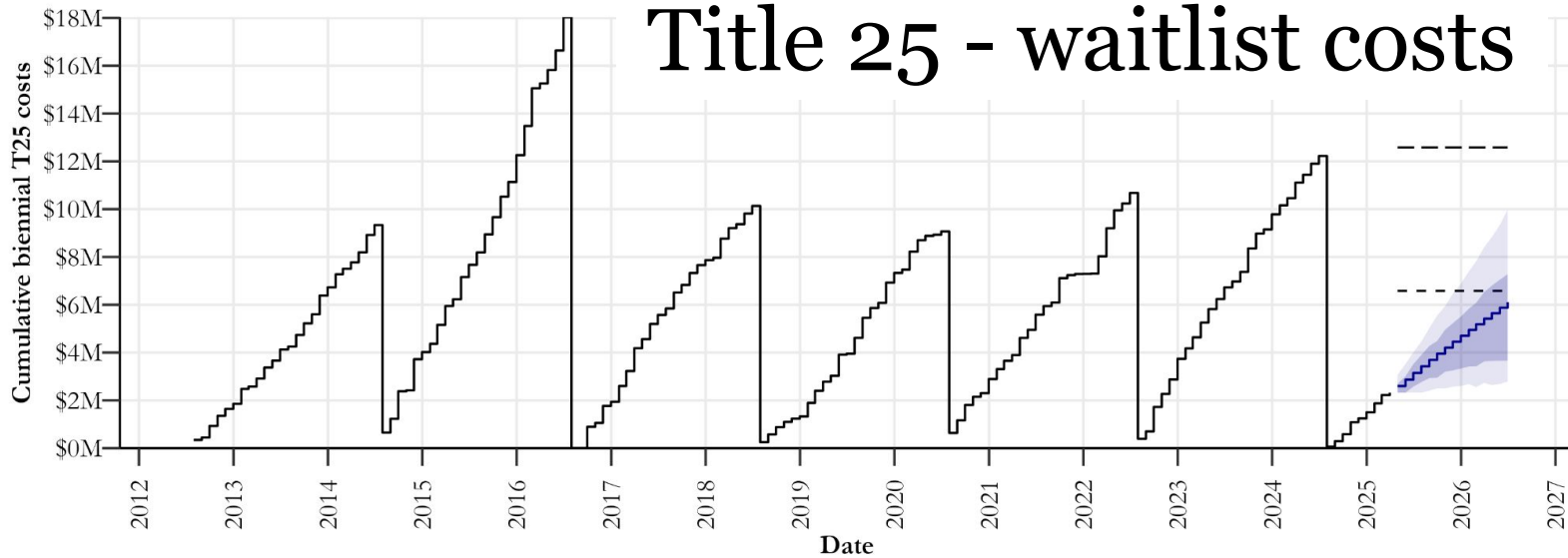
Skilled Nursing Facility (Buffalo, est. 2023)

- **Staffed capacity:** ~ 24 beds (36 FTE)
- **Census:** 22
- **Budget:** \$5.3 M biennial
- **Primary issue:**
 - Reliance on contract labor

Safety net mission: “One campus, long streets”

	Type of Care		
	Acute	Step-down	Long-term
ABI/DD with exceptionally difficult behaviors	WSH	WLRC	
Title 25 - Civil Commitments	WSH		
Title 7 - Forensic Psych	WSH	WSH	WSH
Gero-Psych	WSH	WLRC/WRC	WLRC/WRC
High Medical		WLRC/WRC	WLRC/WRC
“Hard to Place” (e.g. prior sex offenders)			WLRC/WRC
“Emergency Placements”	Both	Both	Both

Title 25 - waitlist costs



Parameter	Estimate
Standard budget	\$6,579,887
Exception budget	\$0
Reserves	\$6,000,000
Total funds available	\$12,579,887
Cumulative cost to date	\$2,323,451
Projected cost	\$6,101,736
95% lower bound	\$2,785,091
95% upper bound	\$9,980,961
Probability of exceeding standard budget	36.0%
Probability of exceeding total funds available	0.3%

Direct Care: Public Health Nursing

16



Wyoming
Department
of Health

Public Health Nursing

17

- **Purpose:** Provides nursing services in 17 counties directly, and funds an additional 5 county-operated programs.
- **Staff:** ~72 State + 2 AWEC + 85 county nurses
- **Budget:** \$25.2M biennial (\$16.3M SGF)
- **Primary services:**
 - Home visitation (516 enrolled / 2,059 contacted)
 - Adult immunization administration (29,073)
 - Communicable disease screening (6,609)
 - Medicaid long-term care assessments (4,166)
 - Community outreach

Community Services: Medicaid

18



Wyoming
Department
of Health

What is Medicaid?

19

Wyoming Medicaid is a joint Federal-State social insurance program that pays for the medical care and long-term care of certain categories of low-income and medically-needy individuals and families.

Origins in Wyoming - Constitution

20

Article 16, Section 6 Loan of credit; donations prohibited; works of internal improvement.

(a) Neither the state nor any county, city, township, town, school district, or any other political subdivision, shall:

(i) Loan or give its credit or make donations to or in aid of any individual, association or corporation, **except for necessary support of the poor; or**

Origins in Wyoming - Statute

21

- Medicaid formalized in 1965 by adding **Title XIX** to the Social Security Act
- Voluntary State-Federal partnership
- Wyoming began participating in July of 1967 (SF 183)

S.F. No. 183 Introduced by: 4

Alfred A. Bauer

A BILL

for

AN ACT providing for medical assistance in conformity with Title XIX of the federal social security act, as amended; providing for administration of the act by the state department of public health; providing eligibility requirements for assistance under the act; providing for the severability of the act; repealing Chapter 78, Session Laws of Wyoming 1963, relating to medical aid for the aged, and setting an effective date.

Eligibility categories

22

- Medicaid provides health and long-term care insurance for certain **categories** of low-income people.
- Having low income does **not** automatically qualify you for Medicaid.

Major eligibility category	Enrollment (4/2025)
Low-income children (including CHIP)	42,013
Low-income seniors (Medicaid as Medigap)	5,177
Very low-income family caretakers	6,347
On Supplemental Security Income (SSI)	4,918
Long term care - seniors and physically disabled	3,528
Pregnant women	3,048
Individuals with intellectual/developmental disabilities	2,936
Other	478
Total	68,445

Income limits in 2025 dollars

23

Eligibility Category	Annual Income Limit	Est. \$ for Individual (2025)	Est \$ for Family of 3 (2025)
Children (incl. CHIP)	200% FPL	-	~\$53,300
Pregnant women	154% FPL	~\$24,101	-
Low-income caretakers	~41% FPL	-	~\$11,000
SSI	SSI (~75% FPL)	~\$11,604	-
Nursing home and waivers	300% SSI	~\$34,812	-

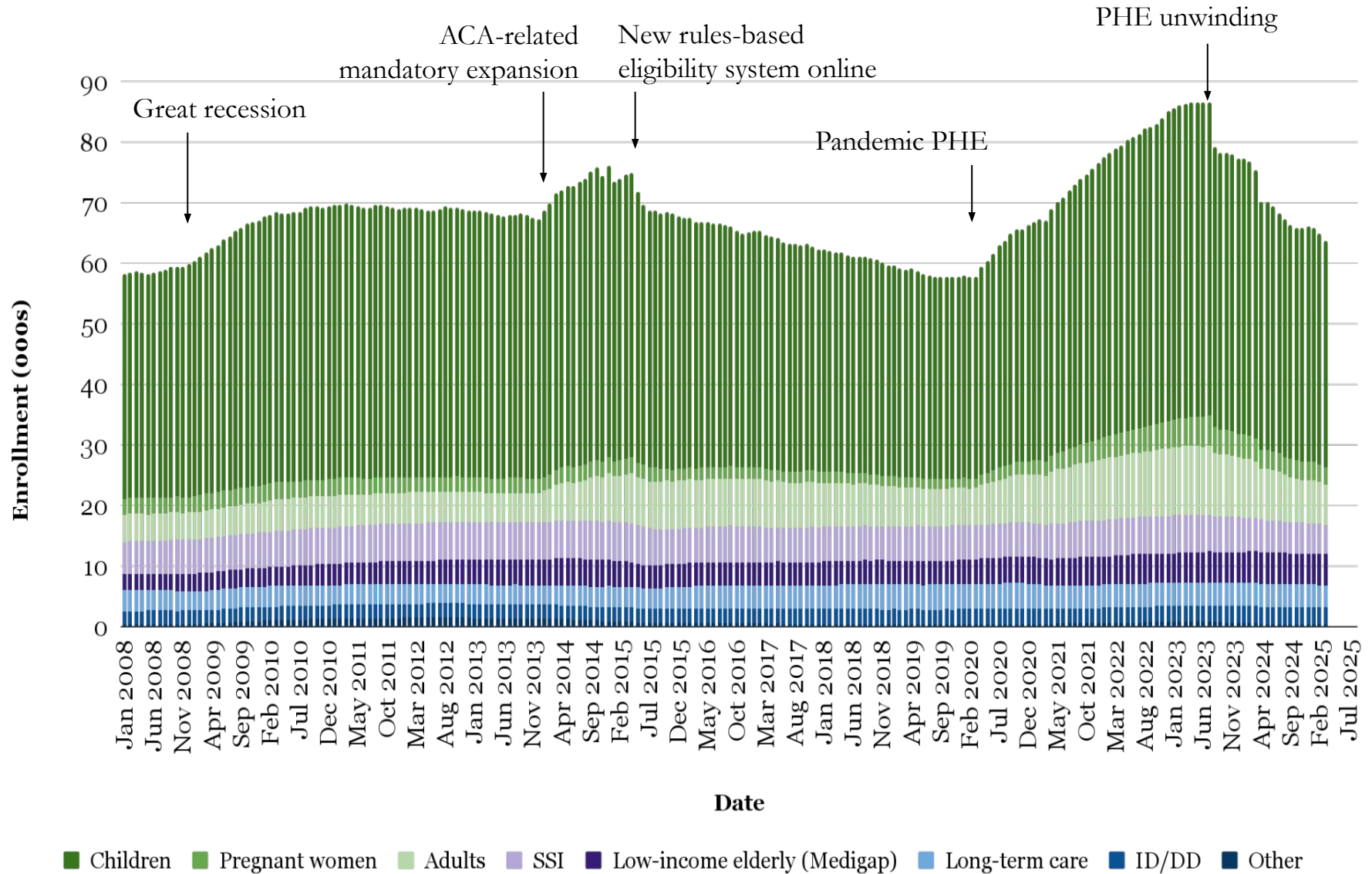
Citizenship and residency

24

Members must be:

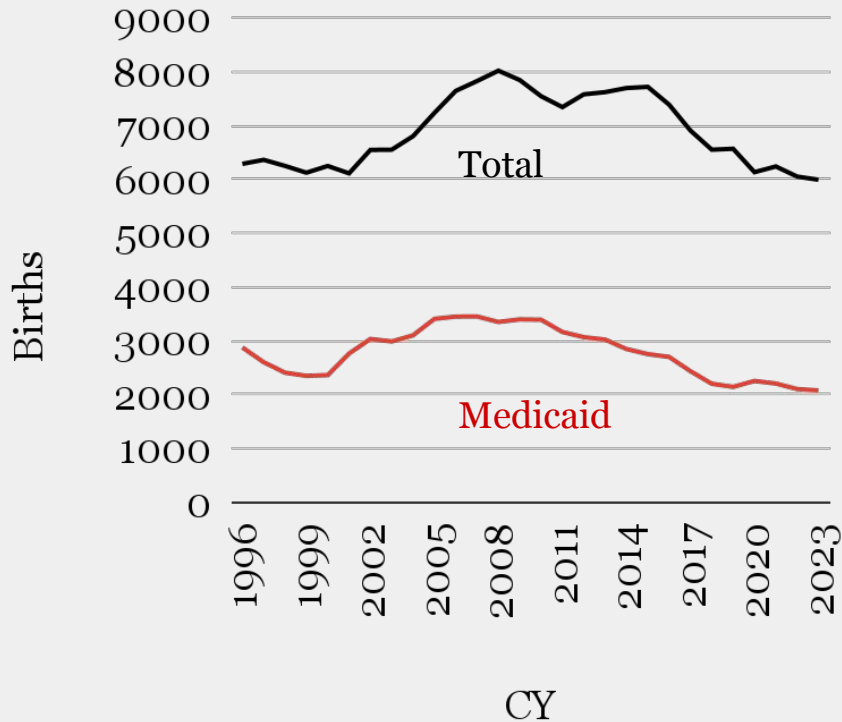
- Wyoming resident, and
- U.S. citizen, or
 - Lawful permanent resident who has resided in the U.S. for at least five years
- Undocumented or ineligible immigrants do not qualify for full Medicaid coverage
 - Per federal law, Wyoming must cover emergency services for this population as long as they meet all eligibility requirements besides citizenship

Medicaid enrollment trends



Births paid for by Medicaid

26



=



Overview - Benefits

27

Service type	Examples
Medical care	<ul style="list-style-type: none">■ Physician and other provider office visits■ Outpatient and inpatient hospital services■ Prescription drugs■ Mental health and substance abuse treatment
Extended medical benefits	<ul style="list-style-type: none">■ Dental (full benefits for children, limited for adults)■ Vision
Long-term care	<ul style="list-style-type: none">■ Facility-based / institutional services<ul style="list-style-type: none">○ Nursing homes○ Wyoming Life Resource Center■ In-home services (“Home and Community-Based Services Waivers”) for people with intellectual/developmental disabilities and those who would otherwise require institutional services.
Other	<ul style="list-style-type: none">■ Non-emergency medical transportation■ Screenings and treatment referrals■ Cost-sharing for <i>Medicare</i> medical services for certain members.

Historical expenditures and enrollment

28

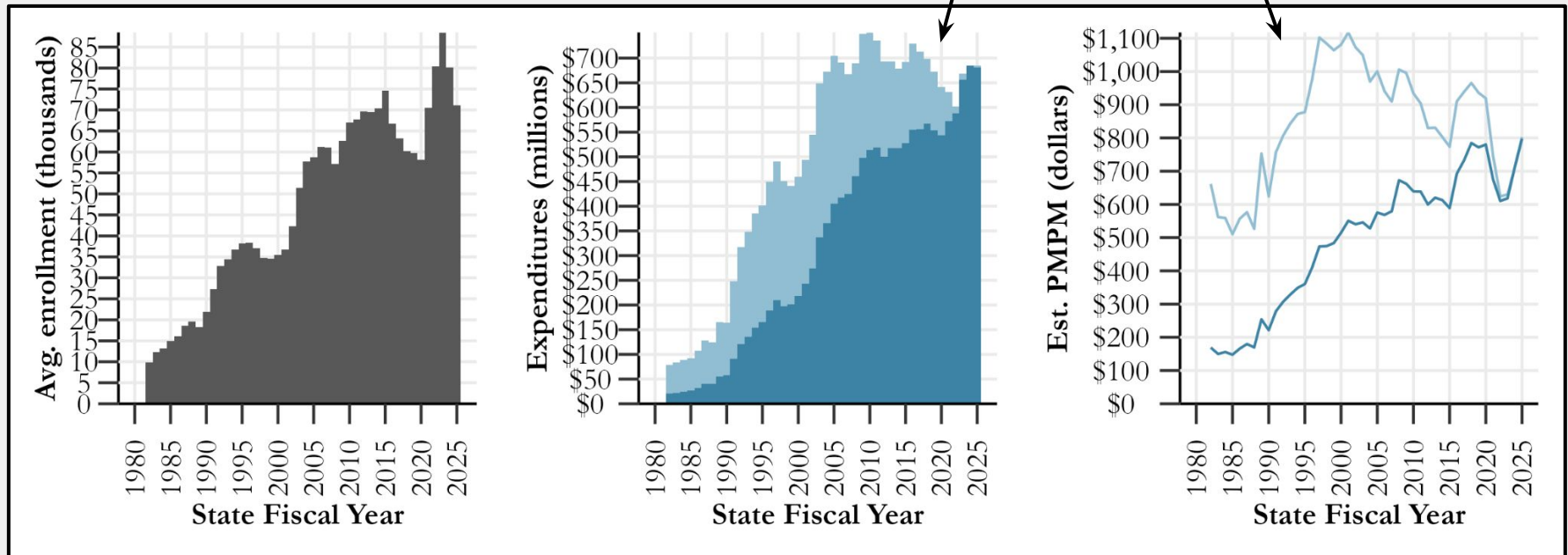
Public Health Emergency

SFY	Expenditures	Avg. Enroll	PMPM
2015	\$524,279,441	74,812	\$584
2016	\$556,565,588	67,907	\$683
2017	\$556,274,739	63,247	\$689
2018	\$567,478,640	60,263	\$674
2019	\$554,032,539	59,826	\$771
2020	\$543,792,374	58,130	\$779
2021	\$565,372,662	69,065	\$682
2022	\$606,454,893	81,085	\$623
2023	\$656,354,316	88,946	\$615
2024	\$672,985,546	80,696	\$695
2025 (est.)	\$680,510,942	71,100	\$797

Historical expenditures and enrollment

29

Light blue are **inflation-adjusted** to current year



Costs vary by member type

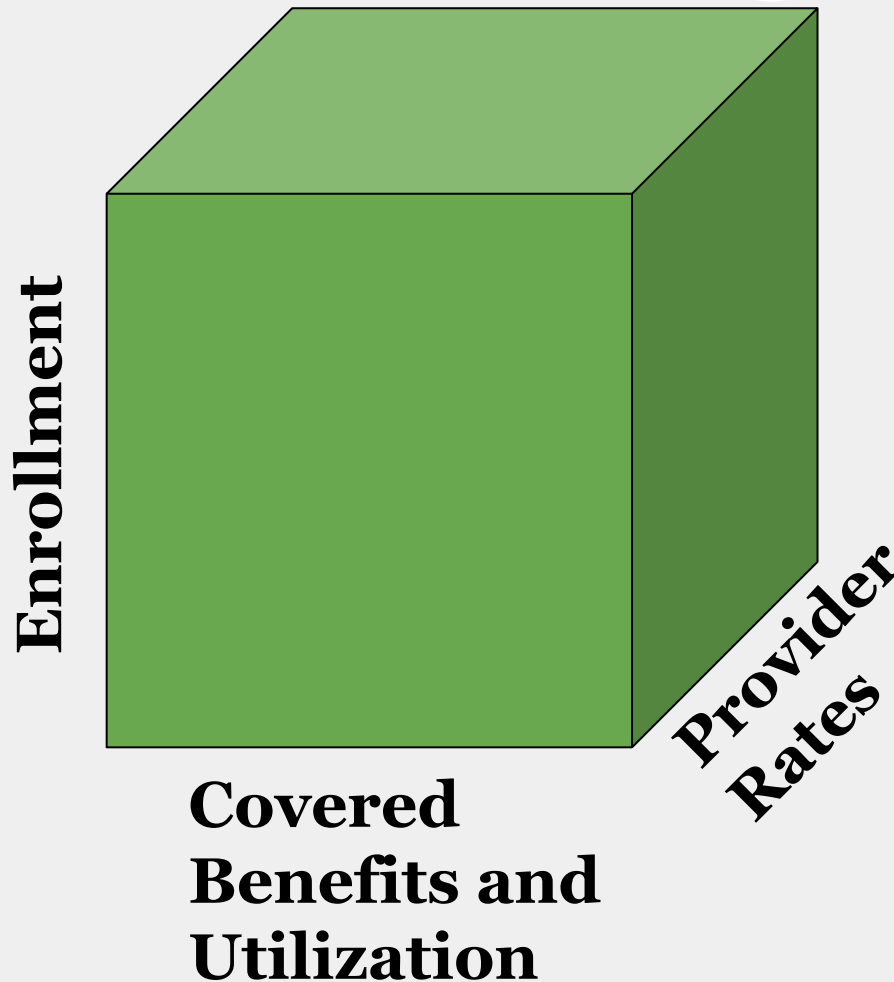
30

Eligibility Category	2024 PMPM
People with I/DD - Comprehensive waiver	\$6,450
People with I/DD - Supports waiver	\$1,834
Nursing home	\$6,269
Home-based long-term care (CCW)	\$1,935
SSI	\$862
Pregnant women	\$645
Low-income caretakers	\$537
Children (includes foster care and newborn)	\$314

(Table is illustrative, does not include all categories)

Policy choices that affect total cost

31



= Total Cost

Administrative facts

32

- On average, **95%** of expenditures go to medical services, **5%** to administration
 - Claims processing and basic eligibility operations and data systems contracted out to private entities (~4% of cost)
 - State employees make up ~1%
- Providers are paid ~**3.9 days** after claim is received
- **99.9%** of claims are submitted electronically
- **Virtually all** providers are paid through electronic funds transfer

Community Services: Behavioral Health Centers

33



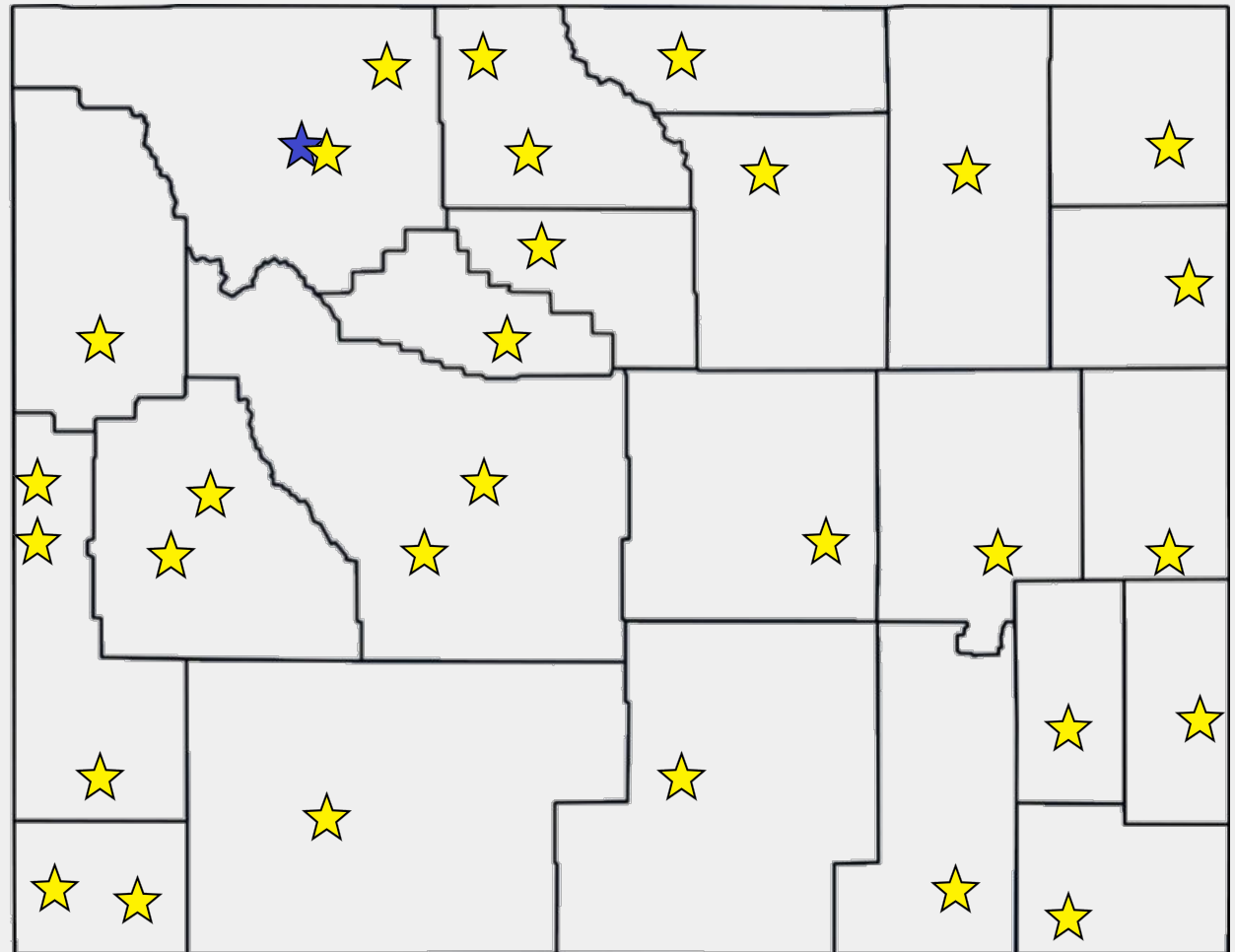
Wyoming
Department
of Health

Behavioral Health Centers

34

- **8 Behavioral Health Centers (BHCs)**
- **Purpose:** Provide outpatient and residential behavioral health (substance abuse and mental health) services to certain priority populations:
 - Acute mental illness
 - Justice-involved
 - High needs children and families
- **Budget:** ~\$100M biennial:
 - \$49M for billable services
 - \$40M in fixed payments
 - \$11M in grants for billable services

35



NOTE: Additional services, such as residential services, vary by service provider and location.

Community Services: Early Intervention and Education

36



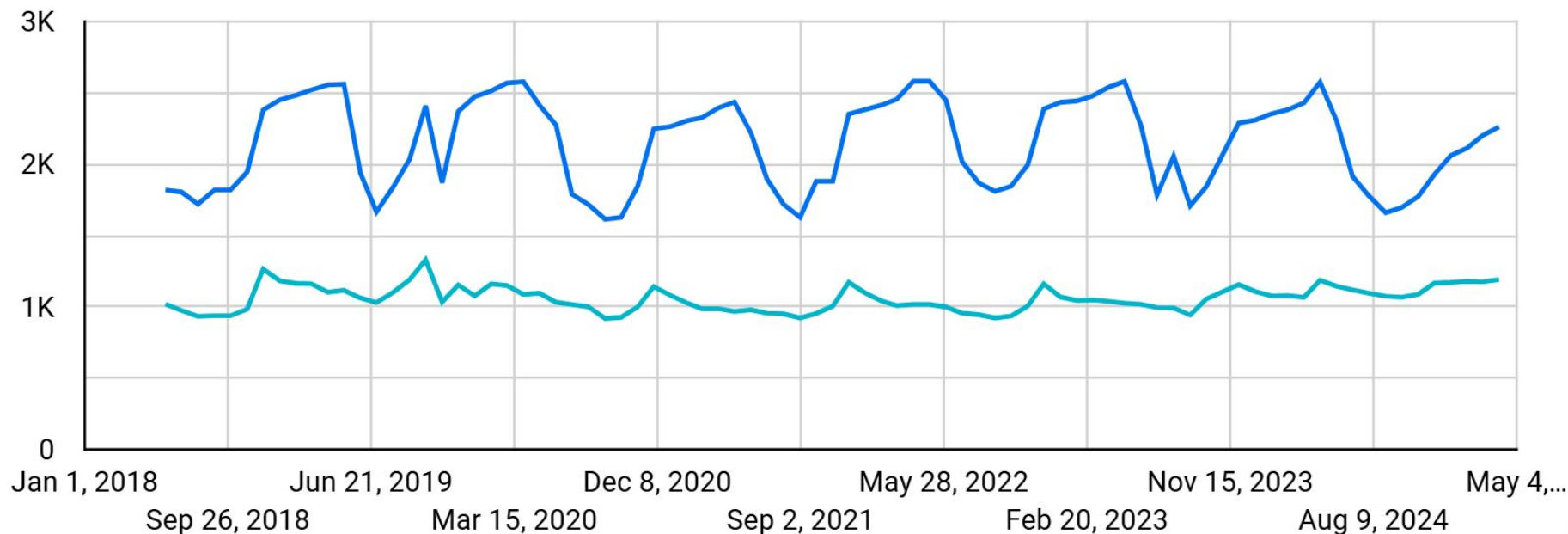
Wyoming
Department
of Health

Purpose and governance

37

- Provide preschool, special education and related services to children identified with developmental delays and/or disabilities.
- **Individuals with Disabilities Education Act (IDEA)**
 - **Part C:** Serves birth through 2 years of age
 - **Part B:** Serves ages 3 through 5
 - Maintenance of Effort (MoE) requirements
- **State statute:** W.S. 21-2-701 et. seq.

Children served



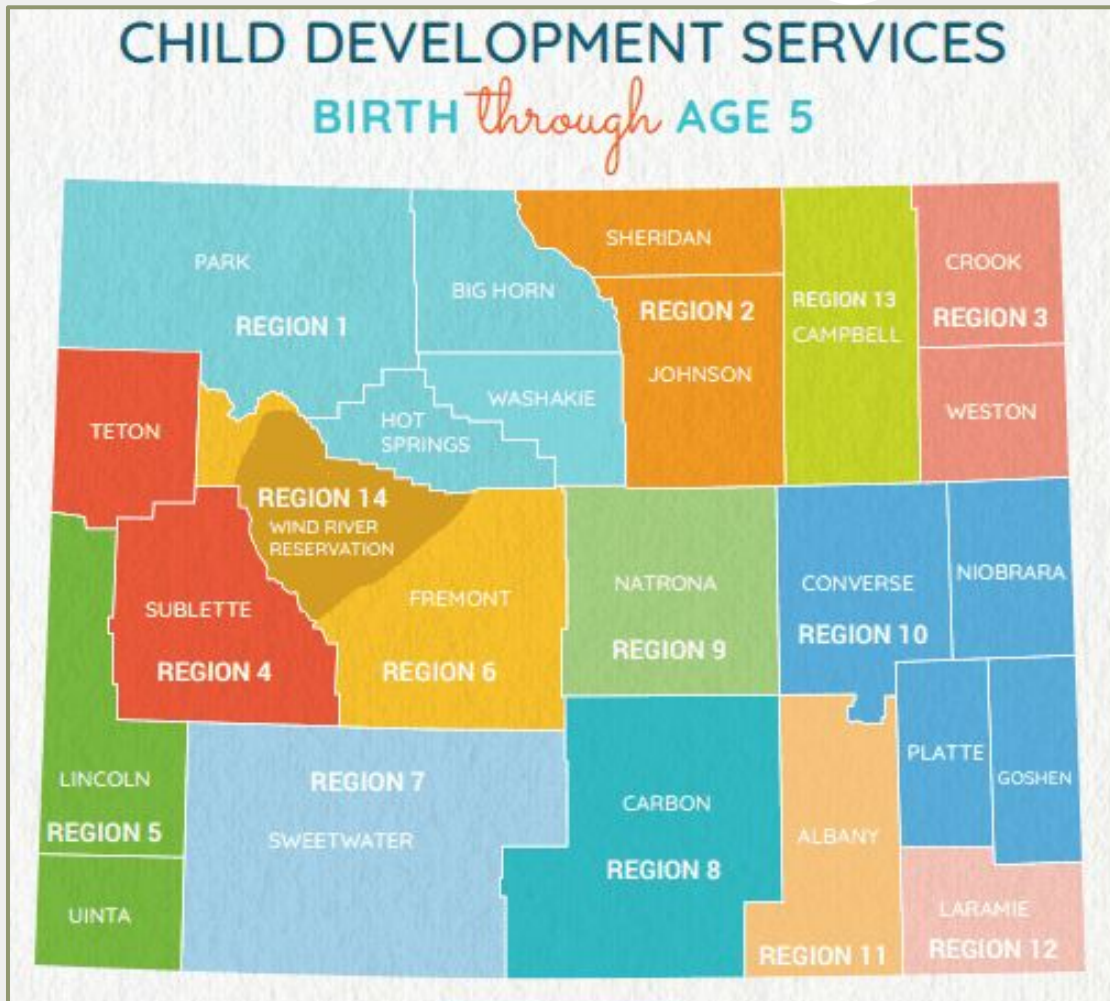
■ April 2025 children:

- Part B (3-5): 2,262
- Part C (0-2): 1,190

- ## ■ Trend steady since 2018. Part B fluctuates over the year due to summer break.

Child Development Centers

39



Fourteen (14) contracted regional Child Development Centers (CDC) with 42 locations across Wyoming.

Contracts are awarded through a Request for Application process.

Current funding, state and federal

40

2024 Wyo. Sess. Laws, Ch. 118 and Ch. 95

2024 SEA No. 0056 - Ch. 95

- Updated statutory minimum per child amount from \$8,866 to \$12,300
- Updated point-in-time count from December 1 to May 1

- Appropriation of \$16,387,104

2024 HEA No. 0050 - Ch. 118

- Appropriation not to exceed \$12,290,328

Ch. 95

SESSION LAWS OF WYOMING, 2024

184

Chapter 95

DEVELOPMENTAL PRESCHOOL FUNDING

Original Senate File No. 19

AN ACT relating to developmental preschool funding; modifying the per child amounts used to calculate payments to service providers; modifying requirements for the department of health's budget request for developmental preschool services as specified; modifying the date utilized to count the number of children that participate in the program; providing an appropriation; and providing for an effective date.

Be It Enacted by the Legislature of the State of Wyoming:

Section 1. W.S. 21-2-705(c)(i) and (iii) and 21-2-706(b), (d)(intro), (e) and by creating a new subsection (g) are amended to read:

21-2-705. Fund allocation.

(c) All funds received by the state from the federal government pursuant to section 611(d) and reserved by the state pursuant to section 611(e)(2) of the federal Individuals with Disabilities Education Act shall be retained by the department of education for state level activities authorized by federal law. The department of education shall expend these amounts in accordance with the following:

(i) A per student allocation shall be determined by dividing the retained amount, less funds allowed to be retained in the state's high risk pool under section 611(e)(3)(A) of the federal Individuals with Disabilities Education Act, by the number of students aged three (3) through twenty-one (21) years receiving special education services on ~~December~~ May 1 of the ~~preceding~~ school year immediately preceding the budget request:

(iii) For purposes of this subsection, "children aged three (3) through five (5) years receiving special education services through the division" means the actual number of students receiving services through the division on ~~December~~ May 1 of the ~~preceding~~ school year immediately preceding the budget request:

21-2-706. Developmental preschool funding.

12. It is the intent of the legislature that, of this general fund appropriation, twelve million two hundred ninety thousand three hundred twenty-eight dollars (\$12,290,328.00) for services to preschool children with disabilities be included in the department of health's standard budget for the immediately succeeding fiscal biennium. Of this general fund appropriation, twelve million two hundred ninety thousand three hundred twenty-eight dollars (\$12,290,328.00) shall be reduced by one dollar (\$1.00) for every one dollar (\$1.00) up to twelve million two hundred ninety thousand three hundred twenty-eight dollars (\$12,290,328.00) appropriated from any source to the department of health in 2024 Senate File 0019, if enacted into law. It is the intent of the legislature that the total amount appropriated by any legislation enacted in the 2024 legislative session, including 2024 Senate File 0019, for the purposes specified in this footnote not exceed twelve million two hundred ninety thousand three hundred twenty-eight dollars (\$12,290,328.00).

EIEP SFY25 Funding

41

Program	Std. Budget (SGF)	2024 ECA (SGF)	Federal Funds	Total
Part C	\$9,259,380	\$2,061,698	\$1,726,725	\$13,047,804
Part B	\$22,382,497	\$4,083,462	\$1,320,924	\$27,786,884
Total	\$31,641,878	\$6,145,164	\$3,047,649	\$40,834,688

Community Services: Senior Centers

42



Wyoming
Department
of Health

Senior Centers

43

- **Network of 38 Senior Centers**

- **Services:**

- Meals, both at the center (515K) and home delivered (847K);
- Social interaction, activities, caregiver support;
- Health education and outreach
- Some in-home services

- **~ \$32M total biennial budget:**

- \$10.5M SGF grants to the Wyoming Senior Services Board
- \$11.4M SGF - Wyoming Home Services, support services
- \$9.1M FF + \$0.5M SGF - Meals

- **Federal funds from Title III - Older Americans Act (OAA)**

Community Services: Women, Infants and Children (WIC)

44



Wyoming
Department
of Health

WIC

45

- **Purpose:** Fund purchases of nutritious food for women, infants and children. Nutrition education, breastfeeding promotion and support.
 - Network of 75 contracted grocery stores;
 - Monthly caseload of ~7,900
- **Staffing:** 14 FTE, 12 PTE, 12 AWEC, 22 County staff
- **Budget:** \$1.6M SGF + \$4.9M OF + \$18.3M FF biennial

Core Public Health

46



Wyoming
Department
of Health

Epidemiology

47

- **Purpose:** Infectious and chronic disease surveillance and case investigation.
 - ~5,000 case reports annually
 - 8-16 outbreak investigations annually
 - Behavioral Risk Factor Surveillance System survey
- **Staffing:** 8 FTE, 7 AWEC
- **Budget:** \$1.5M SGF + \$2.9M FF biennial

Maternal and Child Health

48

- **Purpose:** Lower incidence of preventable death and disease in mothers and children. Promote family resilience, healthy growth and development.
- **Focus areas:**
 - Women and infant health
 - Children with special healthcare needs
 - Youth and young adult health
 - Maternal and child health epidemiology
- **Budget:** \$1.1M SGF + \$3.4M FF + \$1.2M OF
- **Staffing:** 11 FTE

Immunizations

49

- **Purpose:** Subsidizes doses, reports rates, oversees mandatory immunizations for children going to school and child care facilities.
- **Staff:** ~ 8 FTE + 1 AWEC
- **Budget:** \$7M biennial (\$3.5M SGF)
- **Publicly-provided doses shipped:** 74,124
- **Coverage rates:**
 - 7-vaccine¹ series (19-35 months): 62%
 - Kindergarten entry²: 91% [US average: 93%]

1. 4 DTaP, 3 Polio, 1 MMR, 3 HiB, 3 Hep B, 1 Varicella, 4 Pneumococcal.

2. 5 DTaP, 4 Polio, 2 MMR, 3 HepB, 2 Varicella

Wyoming Public Health Laboratory

50

- **Purpose:** Chemical and microbiological testing and confirmation.
 - 5,454 chemical and 44,335 microbiology samples (SFY24)
 - 4,148 Blood Alcohol Tests
- **Budget:** \$5.4 SGF + \$0.7M FF biennial
- **Staffing:** 25 FTE

Vital Statistics Services

51

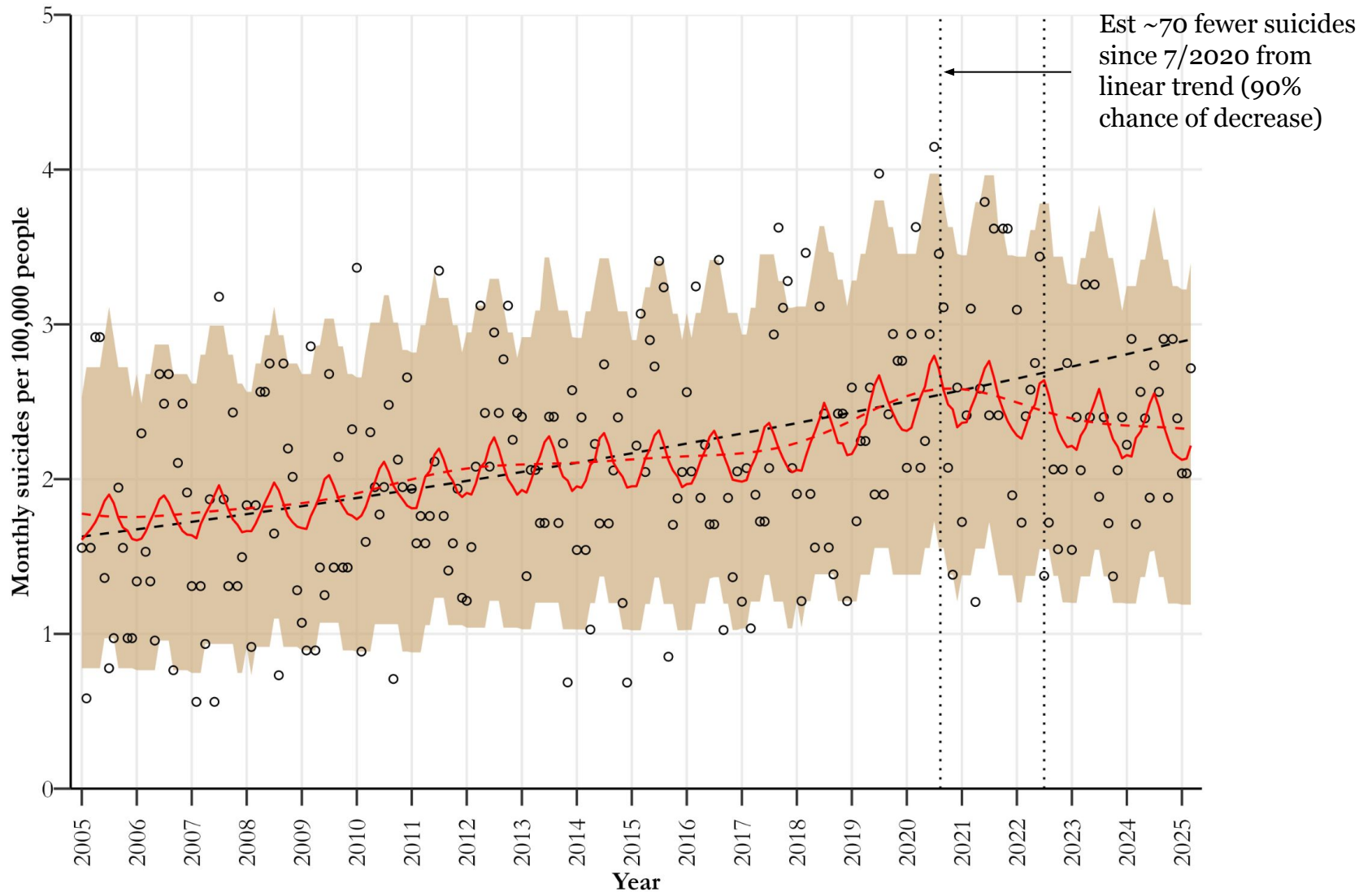
- **Purpose:** Issue birth and death certificates (~150K). Maintain birth, death, marriage, divorce, abortion records (>1M) and provide statistical reporting.
- **Budget:** \$1.7M SGF + \$0.3M OF + \$0.7 FF biennial
- **Staffing:** 10 FTE

Prevention

52

- **Purpose:** Reduce incidence of disease and injury through prevention activities.
- **Focus areas:**
 - Suicide
 - Colorectal, breast, cervical and skin cancers
 - Substance abuse (opioids, alcohol, meth)
 - Tobacco and nicotine
 - Motor vehicle injuries, falls
 - Chronic disease
- **Budget:** \$3.9M SGF + \$10.5M OF + \$8.7M FF biennial
- **Staffing:** 27 FTE

Suicide trends



Preparedness

54

- **Purpose:** Build capacity across the State to respond to local emergencies, including pandemics, natural disasters, and terrorism.
- **Budget:** \$14.9M FF (biennium), includes Hospital Preparedness Program in OEMS
- **Staffing:** 18 FTE

Regulatory

55



Wyoming
Department
of Health

Office of Healthcare Licensing & Surveys

56

- Regulates State licensure of all healthcare facilities (e.g., hospitals, nursing homes)
 - 91 licensure surveys conducted FFY24
- Fire safety and building codes for all health facility construction and remodeling.
 - 80 plan reviews conducted CY24
- State Survey Agency for Medicare/Medicaid certification
 - 100 certification surveys conducted FFY24
- Investigated 296 complaints

Office of Healthcare Licensing & Surveys

57

Type	Count
Ambulatory Surgical Center	21
Federally-Qualified Health Center	22
Rural Health Clinic	31
Psychiatric Residential Treatment Facility	2
Psychiatric Hospital	2
Critical Access Hospital	19
Hospital	10
Home Health Agency	61
End-Stage Renal Dialysis Facility	10
Assisted Living Facility	31
Nursing Home	36
Hospice	22
Other	15
Total	282

Office of Emergency Medical Services

58

- **Purpose:** Regulate and license EMS professionals and ambulance services. Develop comprehensive trauma and EMS system.
- **Budget:** \$1.7M SGF + \$0.4M FF + \$0.1M OF
- **Staffing:** 6 FTE

Pending Federal Changes

59



Wyoming
Department
of Health

Questions?

60



Wyoming
Department
of Health