

Joint Minerals, Business & Economic Development Committee

# Interim Update



WYOMING ENERGY AUTHORITY

# About Us

The Wyoming Energy Authority supports the growth of a secure and prosperous future for Wyoming's energy and natural resources.

Our mission is to advocate for, facilitate and advance Wyoming's energy economy.



WHO WE ARE

# Our Team

The Wyoming Energy Authority team are advocates, partners, environmental stewards, and innovators working to keep Wyoming at the front and center of the energy economy of tomorrow.



Rob Creager  
Executive Director



Kyle J. Wendtland  
Director of Fossil Fuel  
Development



Brayden Connour  
Director of Investments



John Jenks  
Director of Energy  
Market Development



Sean Schaub  
Nuclear Industry  
Coordinator



Patrick Millin  
State Energy Program  
Manager



Jami Blosmo  
Accounting Manager



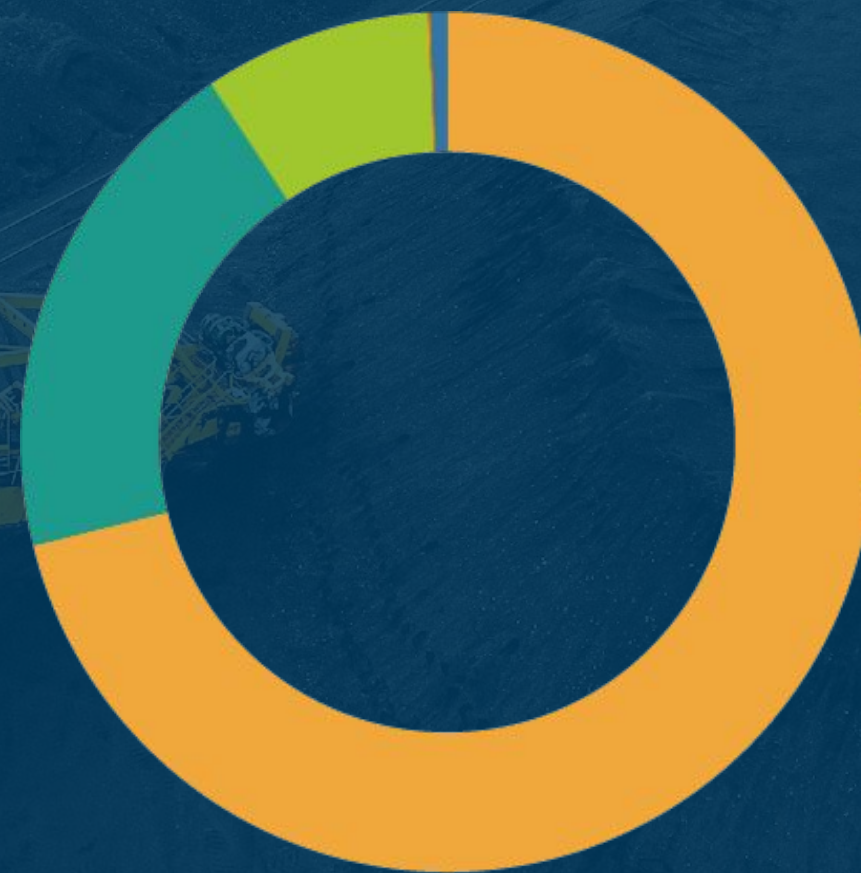
Cindy Prevedel  
Administrative Assistant



AT A GLANCE

# Wyoming's Energy Economy

Wyoming is the third largest net energy supplier in the United States. It is the #1 producer of coal, the #7 producer of oil, and the #10 producer of natural gas in the country. Wyoming also holds the largest deposits of trona in the world, the largest deposit of uranium in the United States, and one of the largest known deposits of rare earths under development in North America.



## Wyoming Energy Production Estimates

- Coal 71.1%
- Natural Gas - Marketed 19.5%
- Crude Oil 8.6%
- Nuclear Electric Power 0%
- Biofuels 0%
- Wood and Waste 0.1%
- Noncombustible Renewables .6%



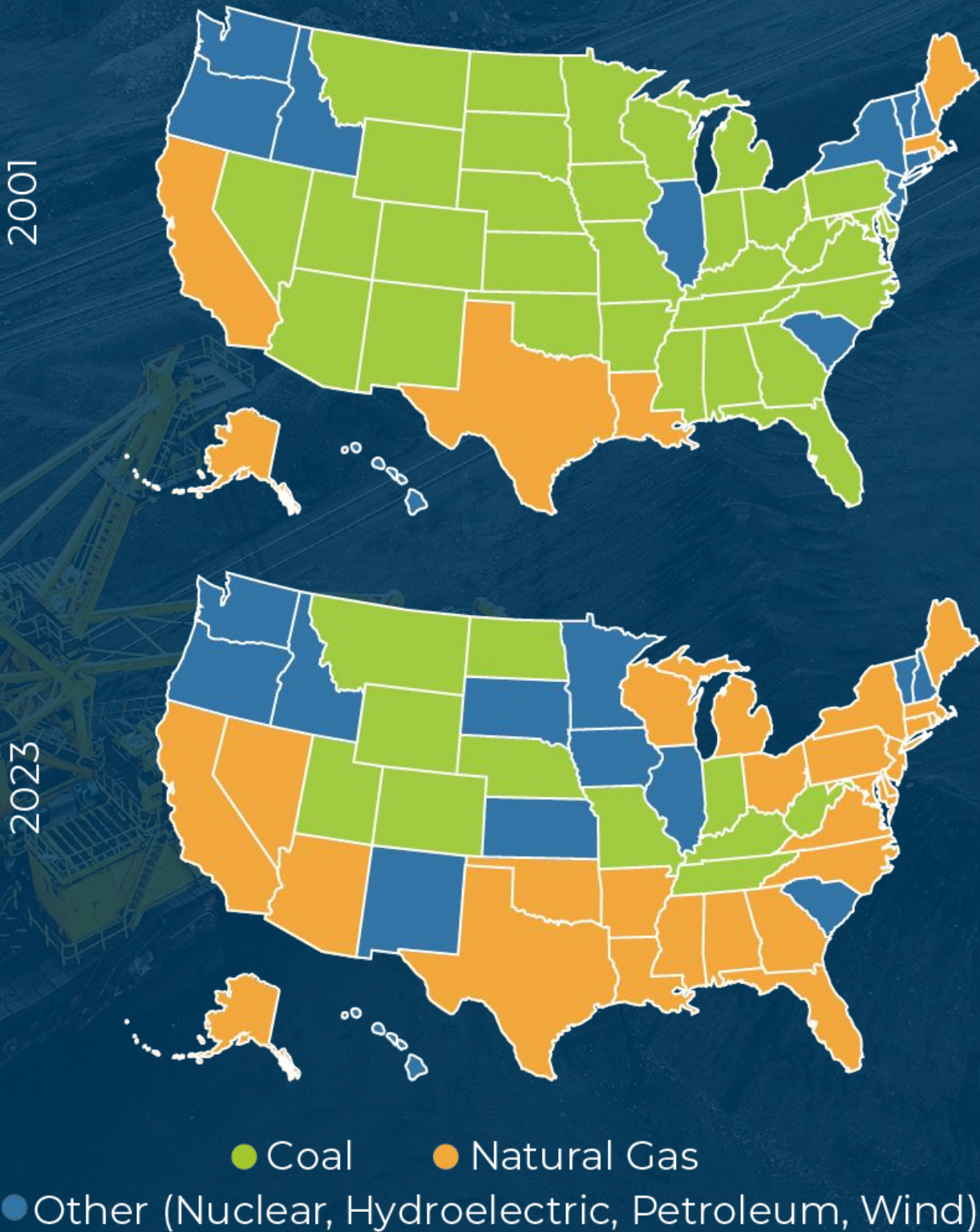
AT A GLANCE

# Wyoming's Energy Economy

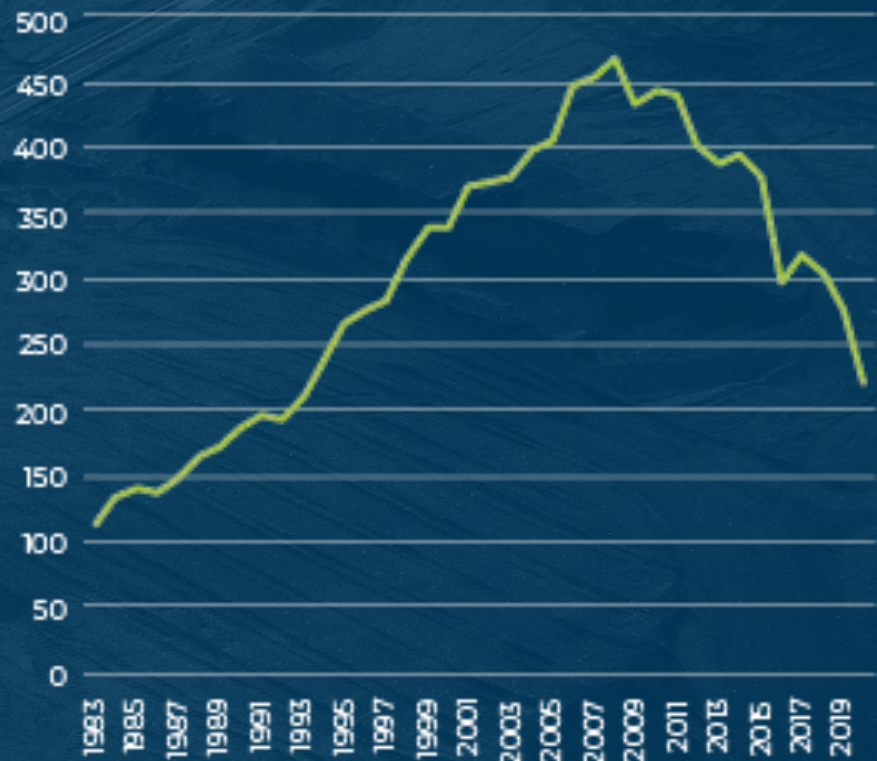
COAL DEMAND MARKETS

One of the greatest challenges that our state is facing is the decline in coal markets. There are a variety of factors that have contributed to this decline – from ill-advised federal policies and regulations, to consumer sentiment demanding low-emission power generation sources. One of the WEA’s main focuses is on hardening the coal demand markets in order to keep Wyoming coal marketable for export.

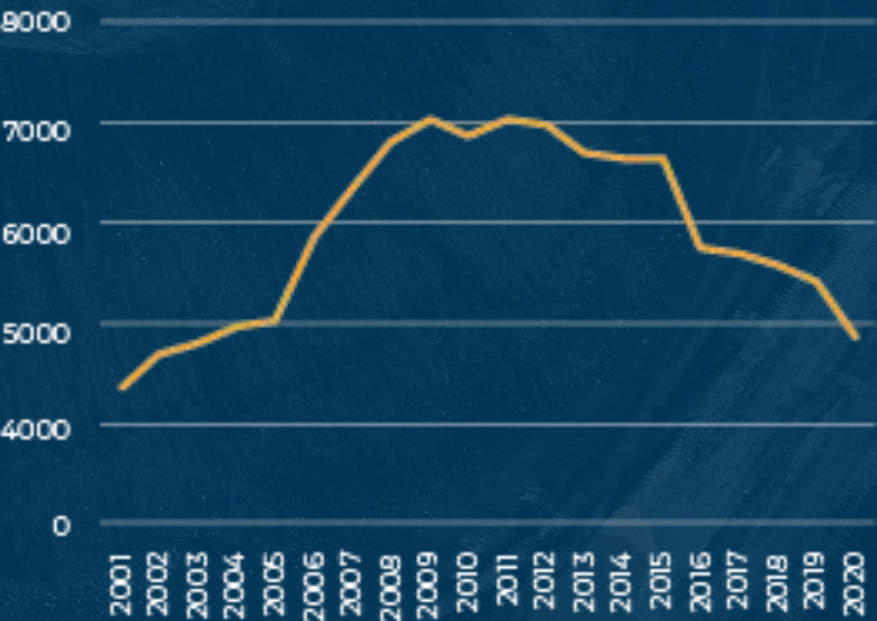
Top Source of Electricity Generation in Every State



Wyoming Coal Production 1983-2020  
Million Short Tons



Wyoming Coal Employment 2001-2020





AT A GLANCE

# Wyoming's Energy Economy

## LOAD GROWTH: SURGING DEMAND

- While the demand for coal has steadily declined in the last decades, the demand for electricity has dramatically increased and pivoted.
- The 5-year load growth projection has increased by a staggering 456% from 23 GW to 128 GW, with nationwide electric demand “to increase by 15.8% by 2029. \*source: Grid Strategies, Strategic Industries Surging: Driving US Power Demand
- The main drivers of this startling increase in demand is due to data centers, manufacturing, and increased residential loads.



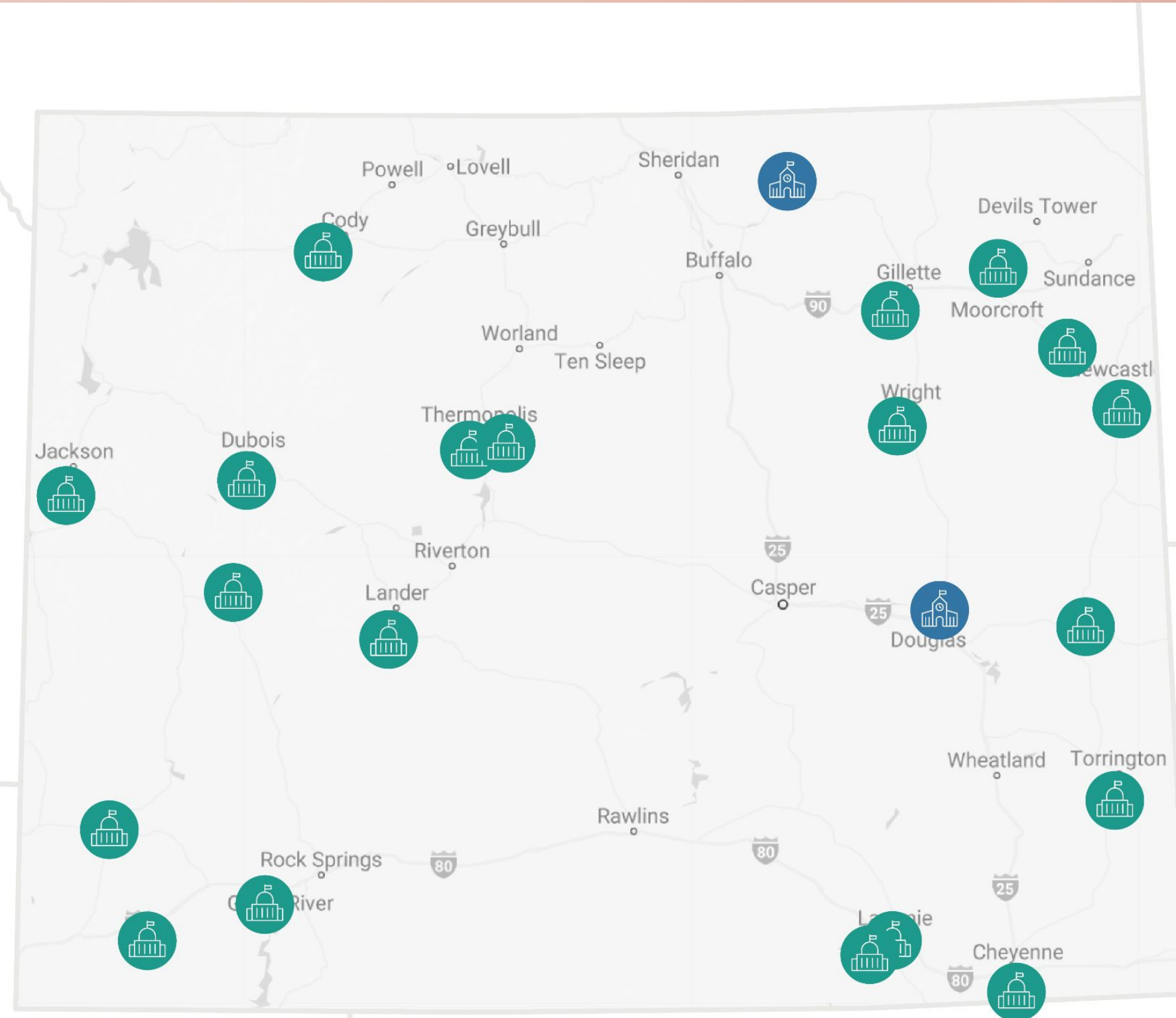


## ENERGY SAVINGS

# State Energy Office

### 2024 WYLite Energy Audit Program: 23 Applicants

Converse County School District #1  
Sheridan County School District #3  
Albany County  
Campbell County (CAM-PLEX)  
City of Cody  
City of Lander  
City of Laramie  
City of Kemmerer  
City of Torrington  
Hot Springs County  
Hot Springs Health  
Teton County  
Town of Jackson  
Town of Lusk  
Town of Pinedale  
Town of Upton  
Town of Wright  
Weston County  
Town of Moorcroft  
Town of Mountain View  
Town of Dubois  
City of Cheyenne  
City of Green River



## WYLite Total

### Grant Amount:

\$500,000

### Project Cost:

\$531,000

### Est. Annual Cost Savings:

\$47,604.04

### Payback Period:

11 years

### Annual Energy Savings:

602,081.47 kWh

Year Ahead

# Interim Work

## Studies and Reports:

- SF0138 Energy Economic Impact
  - Due 10/1
  - RFP completed and work starting
- Wyoming Coal Study
  - RFP completed and kickoff started this week
  - Anticipated to be completed by the end of the year

## Rulemaking:

- SF0017
  - Rulemaking will commence 7/1 pursuant to the law

## Electricity:

- Certificated Territory Integrity
- Large Load Potential Growth
- Third Party Generation





## History

# Energy Matching Funds





## Energy Matching Funds History

Section 321 SF0001(2022):

“(a) . . . Except as provided in subsections (b) and (c) of this section, this appropriation is for purposes of providing matching funds for private or federal funding for research, demonstration, pilot projects or commercial deployment projects related to Wyoming energy needs, including, but not limited to, carbon capture utilization and storage, carbon dioxide transportation, industrial carbon capture, coal refinery, and hydrogen production, transportation, storage, hydrogen hub development, biomass, biochar, hydropower, battery storage or wind and solar energy.”



## Large Energy Matching Funds History

### Section 323 HB0001 (2024):

(b) Expenditure of funds under this section shall be conditioned upon receipt of matching funds in the ratio of one dollar (\$1.00) of appropriated funds under this subsection to not less than one dollar (\$1.00) of matching funds from any nonstate source.

(c) The Wyoming energy authority shall administer the application process, review grant submissions and opportunities and recommend qualified funding applications under this section. The governor shall approve all final awards of funds appropriated under this section.

(d) No award shall be granted that would obligate the state to any future financial commitment beyond the amount of the initial award.

(e) For purposes of this section, "large project" means any qualifying energy project which is at least fifty million dollars (\$50,000,000.00).

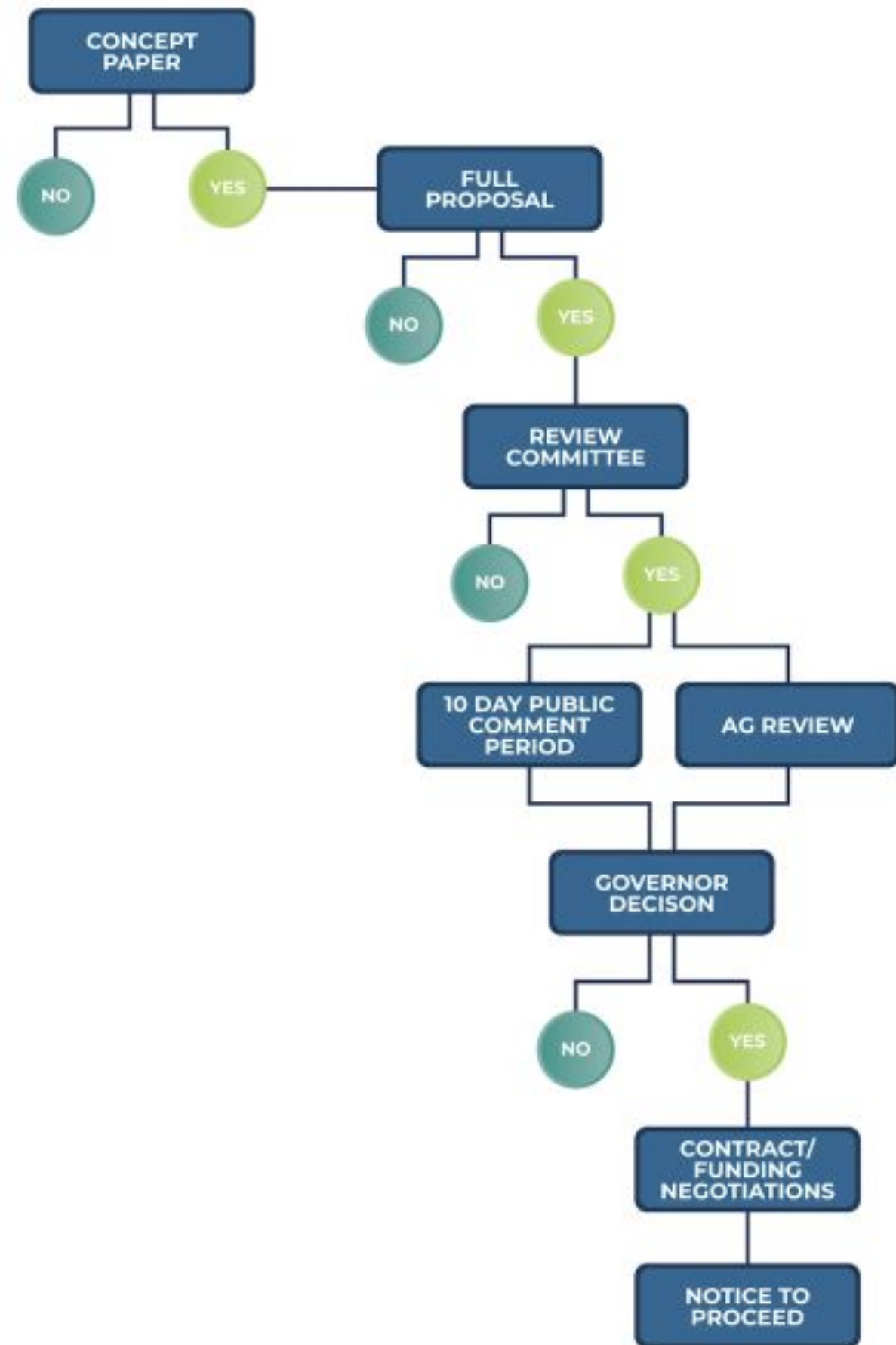
(f) All proposed expenditures from this appropriation and the purposes and goals of each expenditure shall be reported to the management council of the legislature and the joint appropriations committee prior to the expenditure being made.



# Process and Requirement

S

- Does the project meet the scope set forth by the legislature?
- Does the project have established commitments for at least the 1:1 funding match?
- Does the project provide a public benefit for Wyoming that flows from the expected impact(s) of the project?
- Does the project significantly advance research and/or will likely make progress toward a commercial-scale deployment of projects that directly benefit Wyoming?
- Does the project have a high level of probability of achieving defined objectives and metrics of success and have a team with the experience, technical skills and capacity to successfully undertake the project?

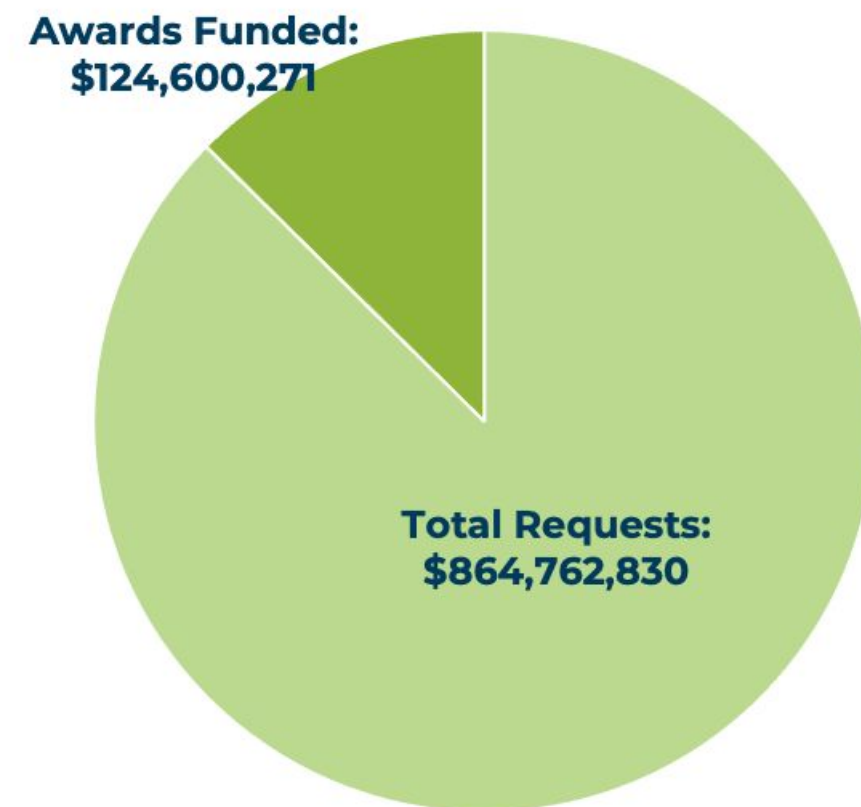




## Energy Matching Funds

# Investments

**EMF Total Requests VS.  
Awards Funded**

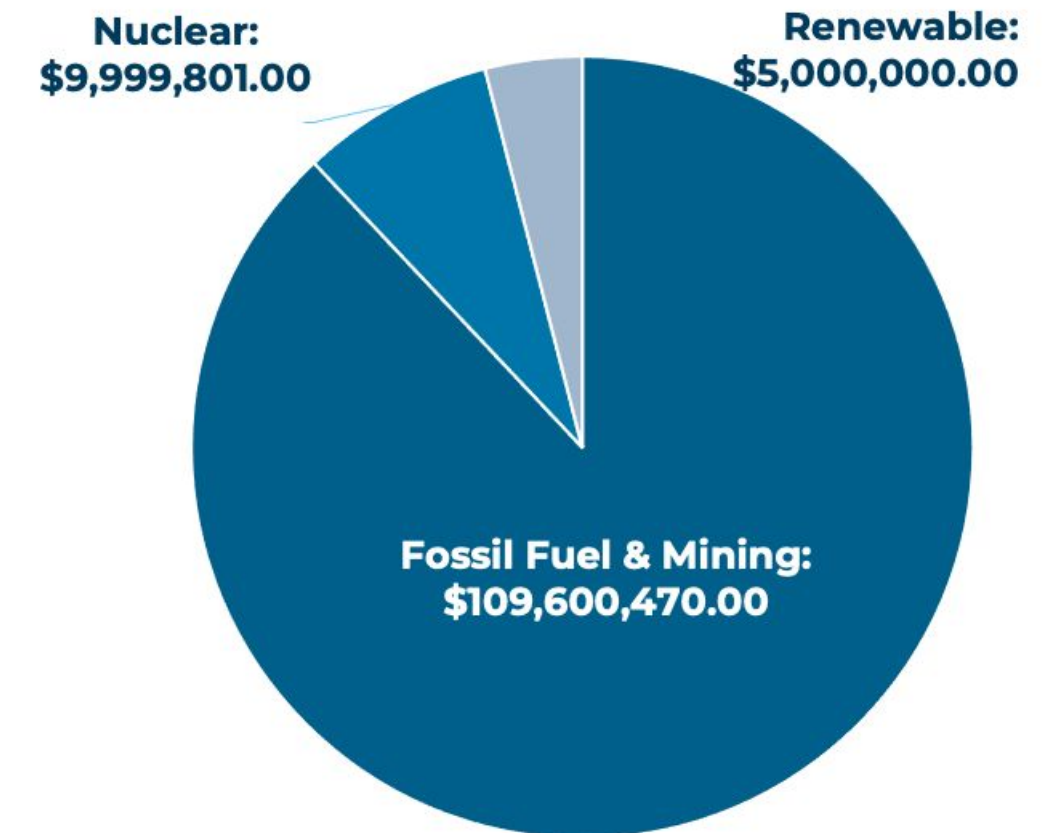


**EMF Awards Funded VS.  
Monies Leveraged**

*For every \$1 we spend, we get \$3.35 in federal and/or private investment.*



**EMF Awards by  
Industry Sector**







WYOMING  
**ENERGY**  
AUTHORITY

1912 Capitol Avenue • Suite 305 • Cheyenne, Wyoming 82001

307-635-3573

[www.wyoenergy.org](http://www.wyoenergy.org)