

Sheridan

WYOMING



THRIVE 2035

MEET THE **EDTF*** TEAM



*Economic Development Task Force

INFORMATION COLLECTION PROCESS



Community Survey	Listening Sessions	Work Session	Town Hall
<p>The Community Home team disseminates a survey to as many community members as possible one month prior to review.</p>	<p>The WBC Visiting Team hosts listening sessions with as many stakeholder groups as possible.</p>	<p>The Visiting Team consolidates the results from all the listening sessions to identify key themes.</p>	<p>The WBC Visiting Team facilitates a Town Hall open to all community residents, businesses, organizations and other stakeholders. The Community will prioritize the themes and identify next steps.</p>

ECONOMIC DIVERSITY

- SEEDA High Tech Business Park and Phase 2 Feasibility Study
- Airport Business Park Expansion / Phase 2
- North Main and East 5th Streets – Availability of Lots for Commercial and Development
- Sheridan College / Advanced Manufacturing Facility
- Sports Tourism Opportunities



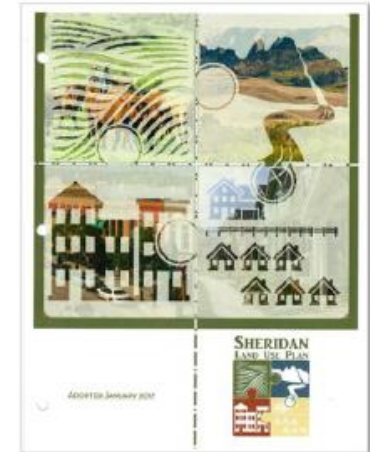
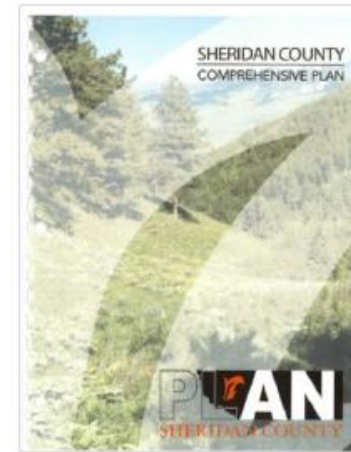
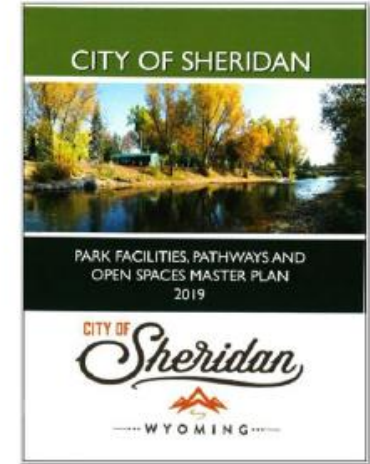
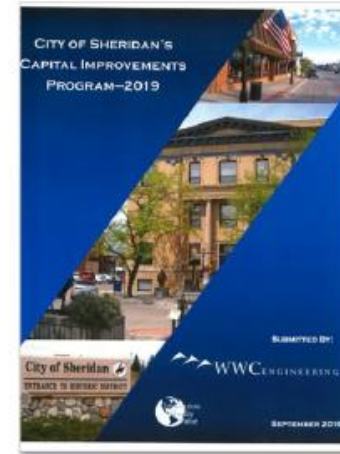
MAJOR THEMES

- **Intentional, Planned Growth**
- **Economic Diversity**
- **Education**
- **Healthcare**
- **Amenities**
- **Housing**

INTENTIONAL, PLANNED GROWTH

Current Planning Documents

- 2017 Sheridan Land Use Plan
- 2019 Sheridan Capital Improvements Program
- 2019 Parks' Facilities, Pathways, and Open Space Master Plan
- 2020 County Comprehensive Plan
- 2022 Sheridan County Historic Preservation Plan

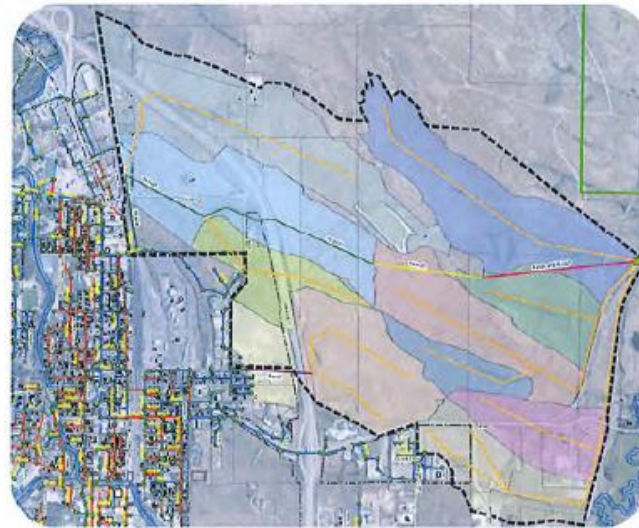


NORTHEAST SHERIDAN INFRASTRUCTURE PROJECT

AUGUST 2014

PREPARED FOR:

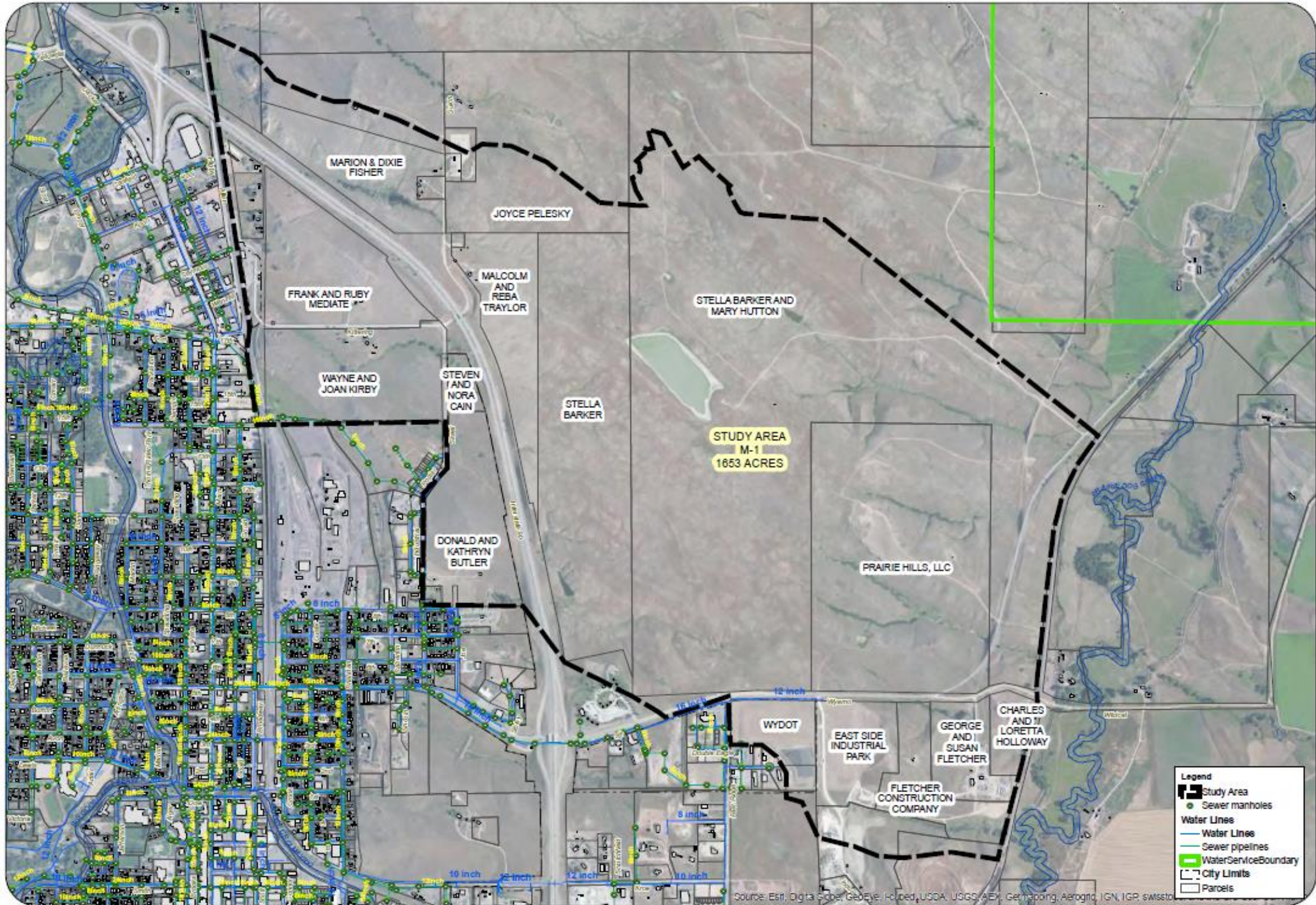
CITY OF SHERIDAN
55 GRINNELL PLAZA
SHERIDAN, WY 82801



PREPARED BY:



 **DOWL HKM**
16 W. 8TH STREET
P.O. BOX 7010
SHERIDAN, WY 82801
PH. 307.672.9006
FAX. 307.672.5214



No.	Revision	By	Date

CITY OF SHERIDAN
 EAST 5th STREET SANITARY SEWER
 STUDY AREA



1 in = 1,200 f

- Legend**
- Study Area
 - Sewer manholes
 - Water Lines**
 - Water Lines
 - Sewer pipelines
 - WaterServiceBoundary
 - City Limits
 - Parcels

DOWL HKM
 KYLE H. HARRIS
 P.E., P.L.L.C.
 1000 W. 10th Street
 Sheridan, WY 82801
 307.676.3333
 www.dowlhkm.com

Sheet No.
FIGURE
 1

Source: Esri, DigitalGlobe, GeoEye, Earthstar (United States), USDA, USGS, AeroGRID, IGN, IGR, swisstopo

“My attorney is reviewing the documents now, but I believe we are in broad agreement regarding going forward, and I anticipate that we will be able to have signed documents within two to three weeks at the latest.”