



**Wyoming
Game and Fish
Department**

June 2024

Sublette Antelope Migration Corridor Update



Doug Brimeyer, Wildlife Deputy Division Chief

Sublette Antelope Migration Corridor

01

Science

Analysis and Maps

03

Corridor Designation

Effects and benefits

02

Policy

Process and EO Implications

04

Next Steps

Outline next steps



The Science



Big Game Migration

- Summer and Winter Range (Connectivity)
- Promotes Abundance (Nutrition)



Too Young

Not enough biomass



Just Right

Easy to digest
High in nutrients



Too Old

Build up of defense compounds
Hard to digest



The Science



Big Game Migration

- Resident vs. Migratory vs. Nomadic
- Long, Medium and Short Distance Strategies
- Not all parts of the corridor are created equal



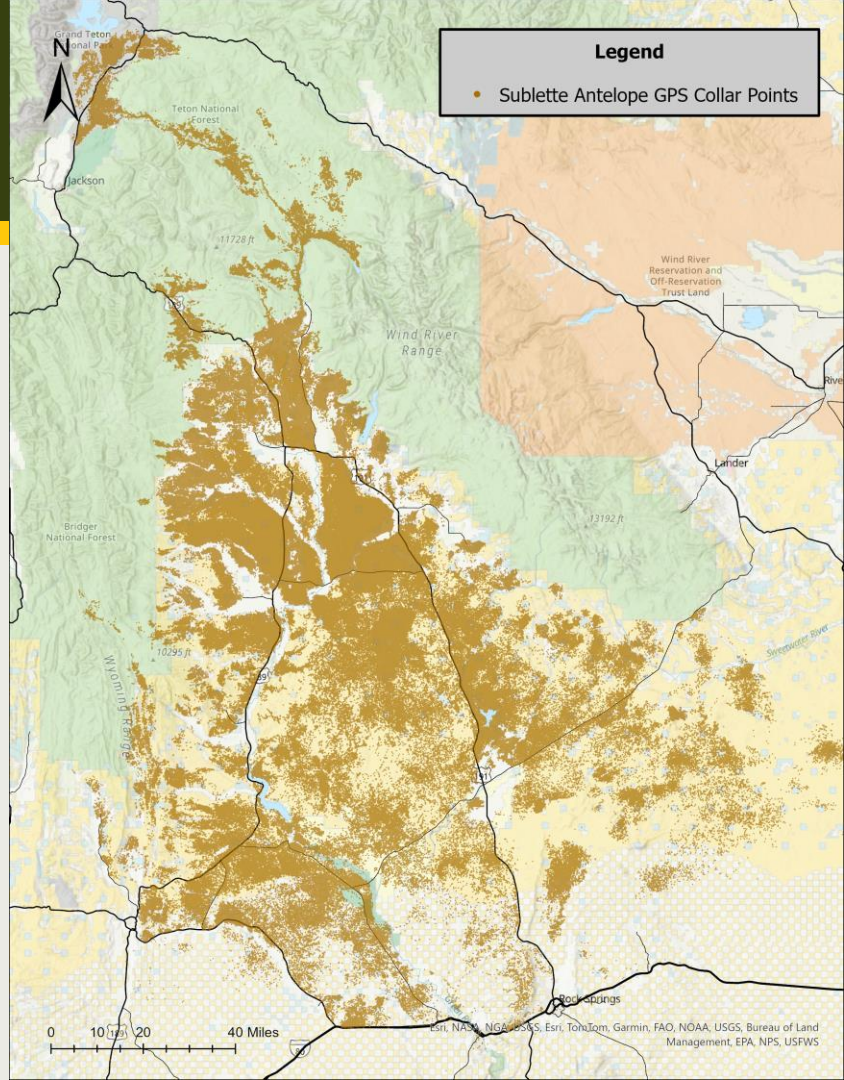
The Science

Research

Sublette Antelope GPS Collar Data Points

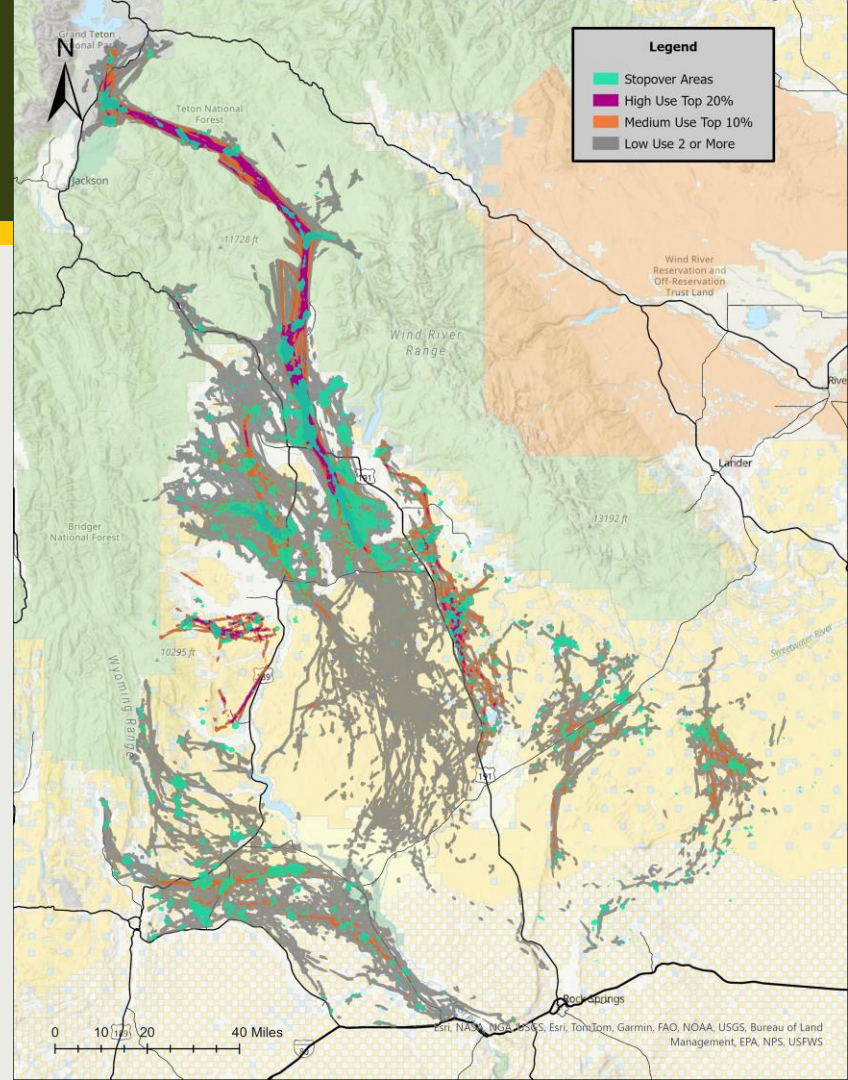
Total Samples Used for Analysis

- 415 Individuals
- 816 Sequences
- 2002-2022



Analysis

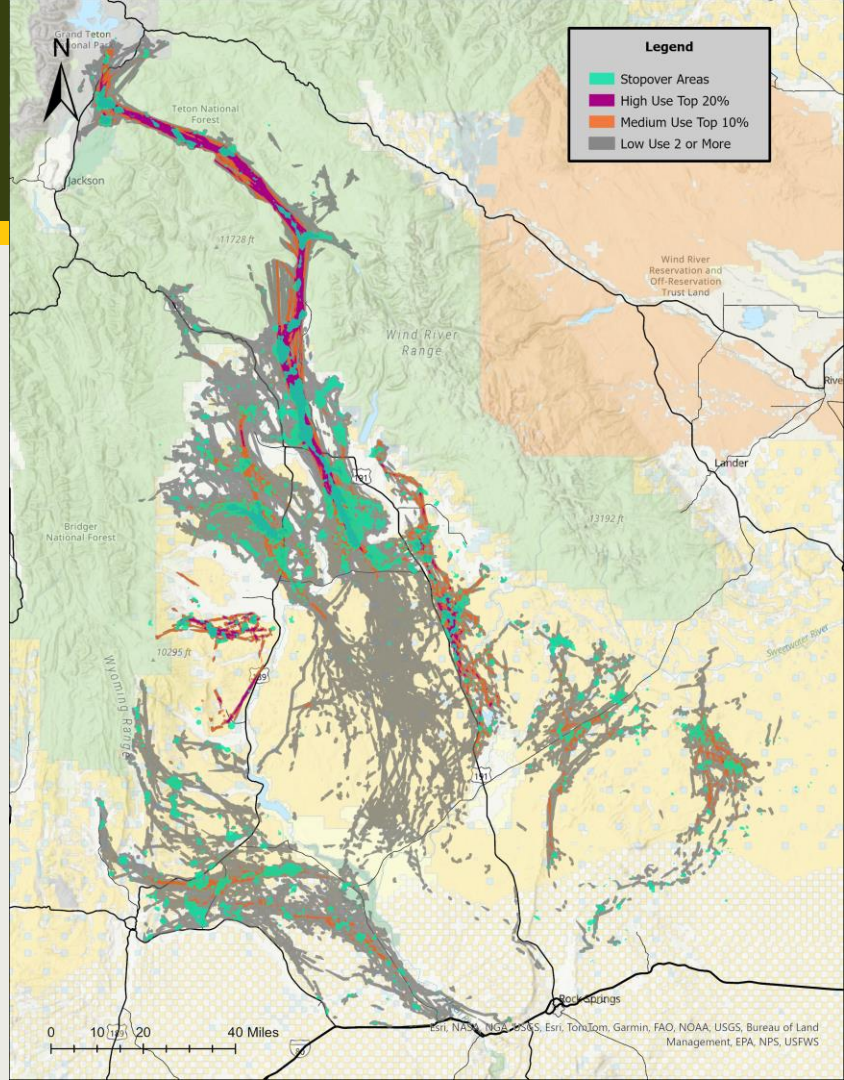
- **High, Medium and Low**
 - Line Buffer
 - Greater than 20 percent High, Greater than 10 percent Medium, 2+ Low
- **Stopover**
 - Brownian Bridge
 - Top 5 percent of time



The Science

Analysis

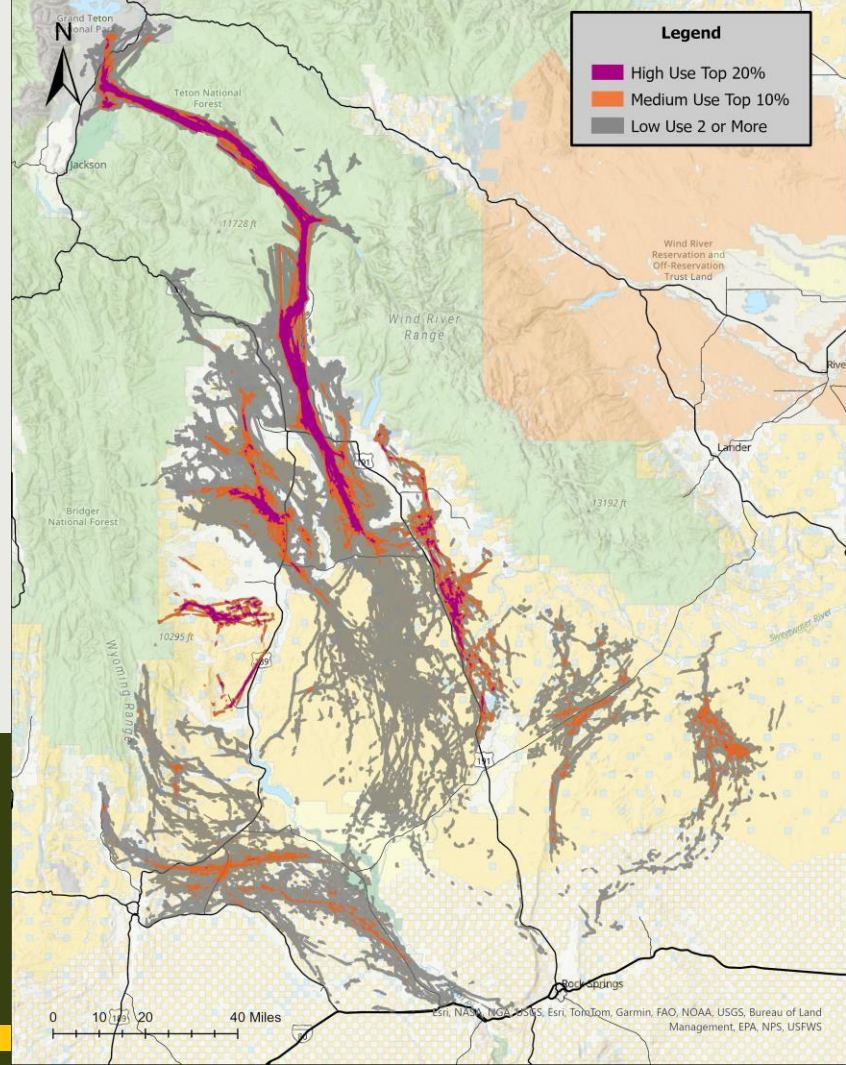
- Only Migratory Individuals
- Divided into 7 subherds, then combined





© Elizabeth Boehm

Overview Corridor Map



EO Policy



The MCEO Designation Process

- Outlined in the Wyoming Mule Deer and Antelope Migration Corridor Protection Executive Order 2020-1
- First time working through this process



EO Policy



The MCEO Designation Process

Steps completed:

- Data collected; Scientifically sound data analysis
- Local Department personnel confirm map results and completed Threat Evaluation
- Public outreach
- Commission voted to advance in the process

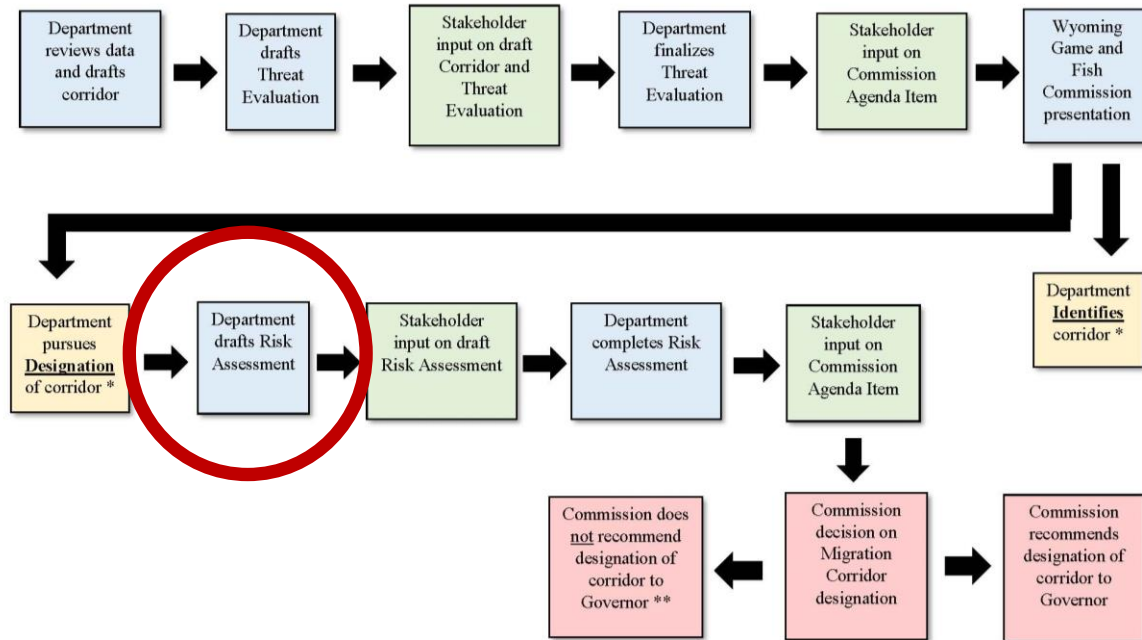


EO Policy



Migration Corridor Executive Order Identification and Designation Process

August 10, 2020



*Corridor data available to public

**Corridor is identified



= Department/Commission tasks



= Public input



= Decision



= Potential pathway

Next steps:

- Biological Risk and Opportunity Assessment
- Public Review

Designation



What effect does the designation have on Wyoming

- MCEO does not apply to actions by private landowners on their own lands, existing permits/NEPA decisions or livestock grazing
- New state permitted activities and disturbances on public lands will be evaluated on a case-by-case basis
 - Minimize impacts to the functionality of the corridor
 - Typically done through siting and timing



Designation



What are some of the benefits of designation

- Opportunities for additional funding and prioritization for conservation work (CEs, Fence Modifications, Vegetation Enhancements)
- Ensure consideration of corridor functionality in land use decisions
- Consistent management stipulations across all public lands



Designation

Conservation Efforts Underway

- Conservation easements
- Fence modification efforts
- Cheatgrass and other vegetation treatments
- PAPO-JIO mitigation work
- Wildlife Crossings (Trappers Point, Dry Piney, Highway 28 ROW fence)
- USDA-WY Big Game Partnership Program



Next Steps



Commission voted to move forward

- Department will draft a Biological Risk and Opportunity Assessment; public comment; finalize
- Present Risk Assessment to Commission with public comment
- Commission votes if they recommend designation to Governor
- Governor process of soliciting feedback from the public and ultimate decision to designate or not





Thank you!

