

# PROSPER.

**Proactive Reduction Of Suicides in Populations via Evidence-based Research**

---

KENT A. CORSO, PSYD, BCBA-D, FOUNDER

## Suicide deaths, plans, and attempts in the United States

More than  
**48,000**

people died by  
suicide in 2021

**1** death every  
**11** minutes

**12.3 million**

Adults considered suicide

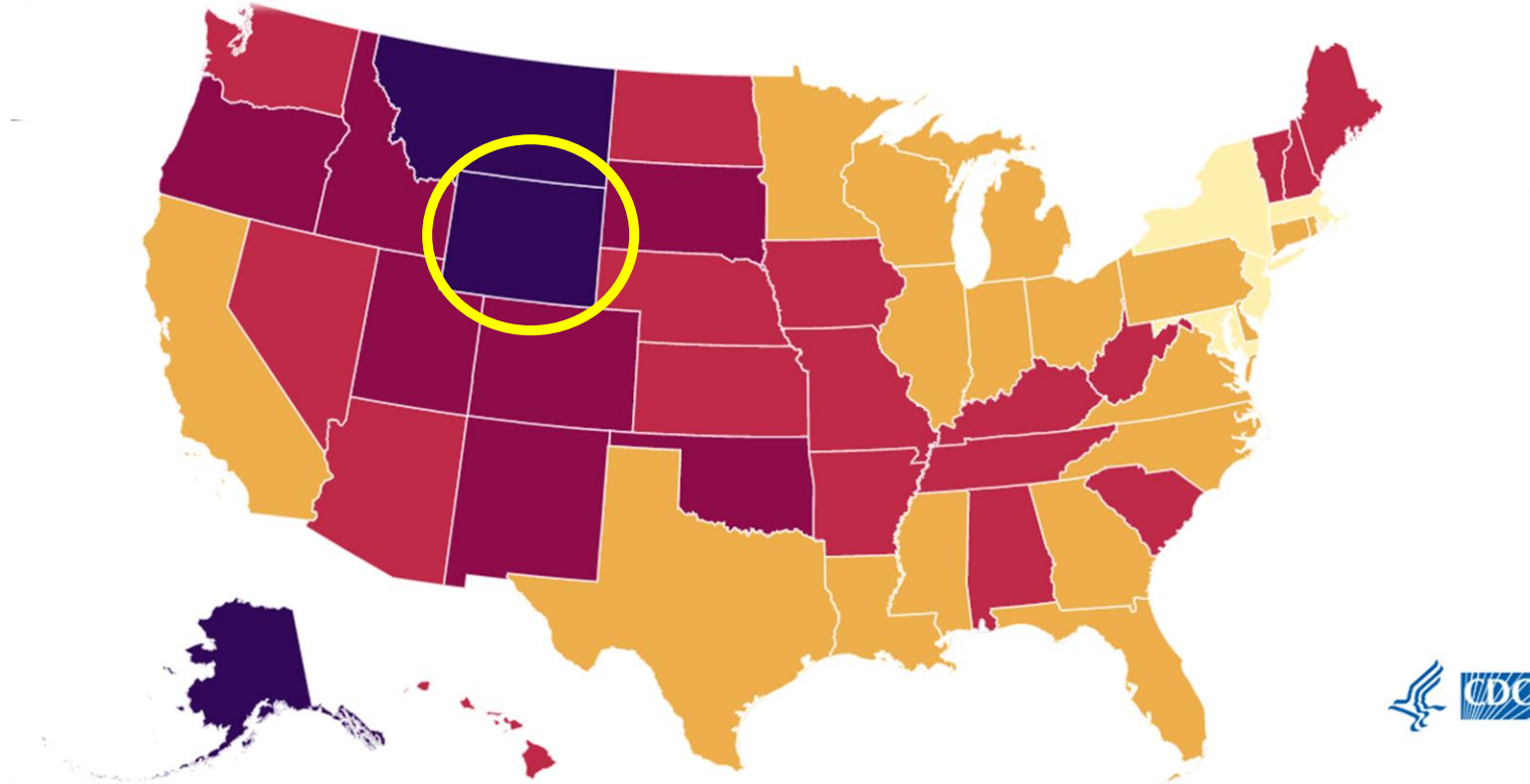
**3.5 million**

Adults made a plan for suicide

**1.7 million**

Adults attempted suicide

# Wyoming Suicide Trends



Age-Adjusted Death Rates<sup>1</sup>

6 - < 10.7

10.7 - < 15.4

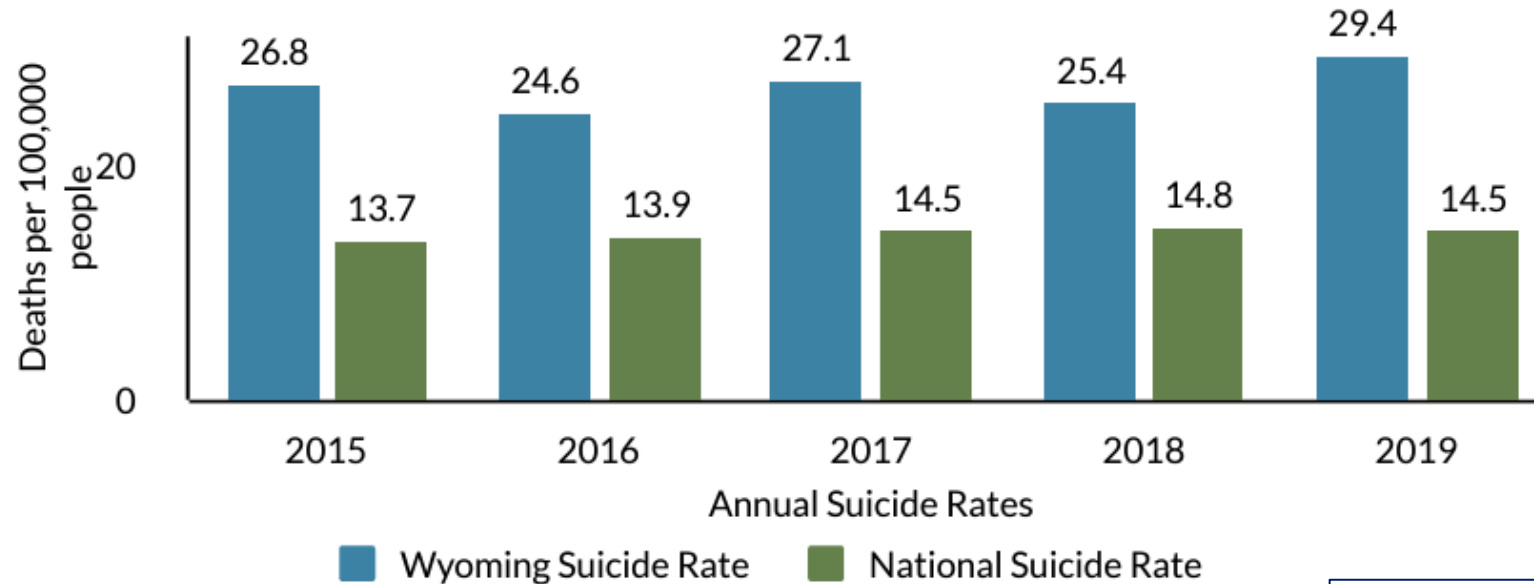
15.4 - < 20.1

20.1 - < 24.8

24.8 - 29.3

# How Does Wyoming Compare?

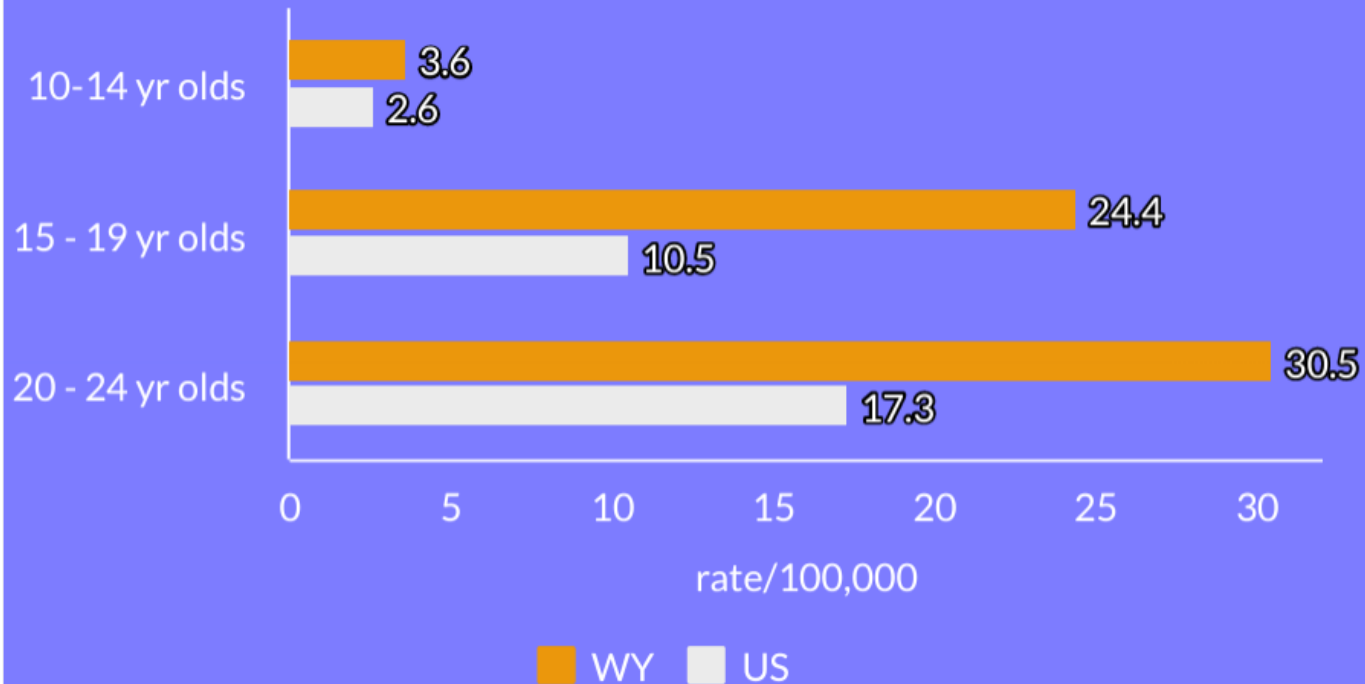
With a suicide rate of 29.4 per 100,000 people in 2019, Wyoming ranks 1st in the United States for suicide deaths and double the national average of 14.5 deaths per 100,000. Suicide is the 7th leading cause of death in Wyoming; however, it is the 2nd leading cause of death for ages 10-44.



Source: WY Dept of Health

# Comparison to the U.S. Rate

Wyoming (2010-2020) Compared to U.S. (2019)^ Adolescent and Young Adult Suicide Rates by Age Group <sup>2,4</sup>



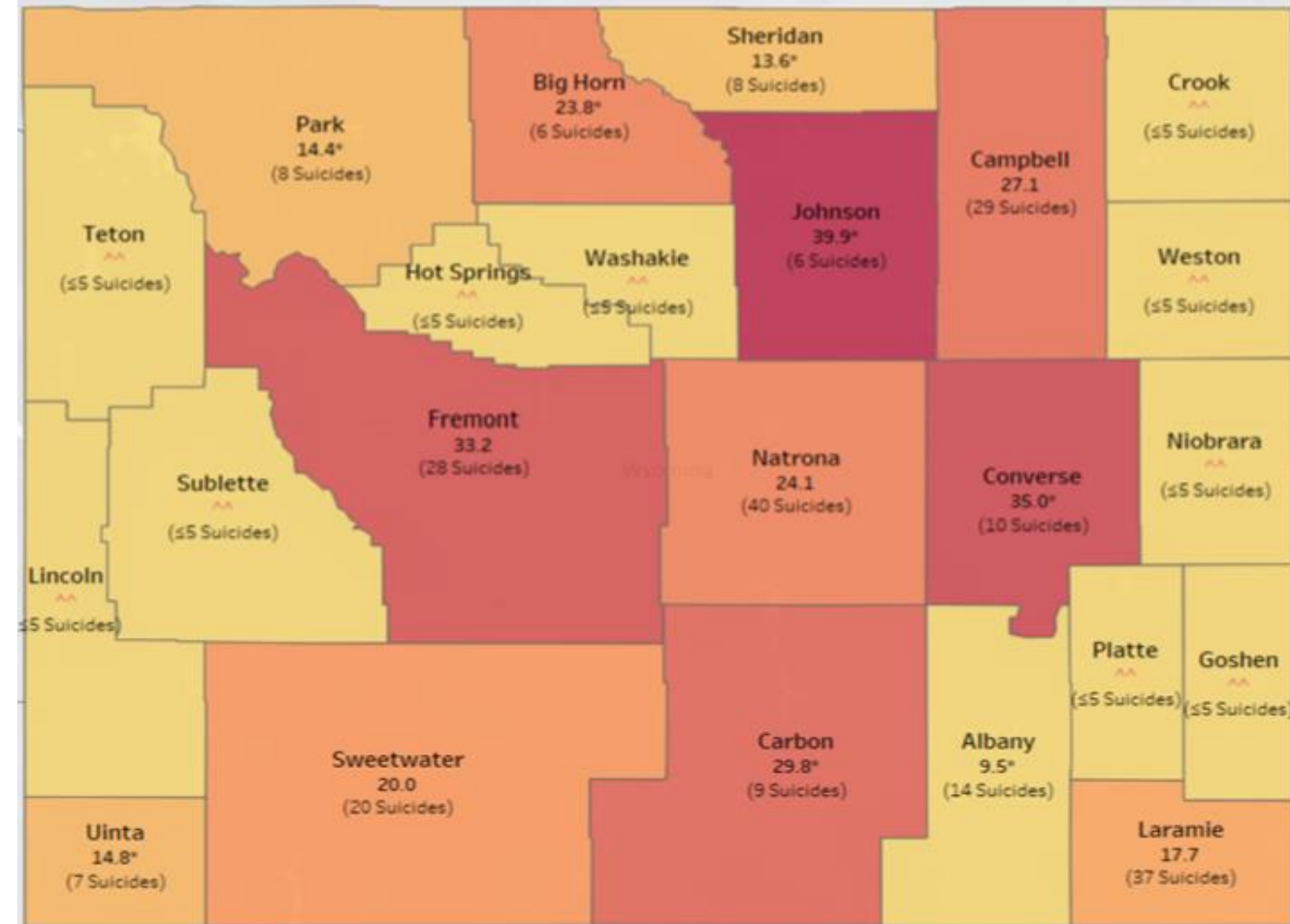
In Wyoming and the U.S., the suicide rate was **highest among 20-24 year olds.**

In **Wyoming** the suicide rates for **all three age groups** were **higher** than the U.S. rate.

The **Wyoming** suicide rate among **15-19 years olds** was **more than double** the U.S. rate for that age group.

# Wyoming Youth Suicides

## Wyoming Adolescent and Young Adult Suicide Rate (per 100,000 10-24 yr olds) by County 2010-2020<sup>2</sup>



Between 2010 and 2020, Johnson County had the highest suicide rate among 10-24 year olds (39.9/100,000) followed by Converse (35.0/100,000) and Fremont (33.2/100,000) counties.

Rate are suppressed for 11 of the 23 counties due to small numbers.

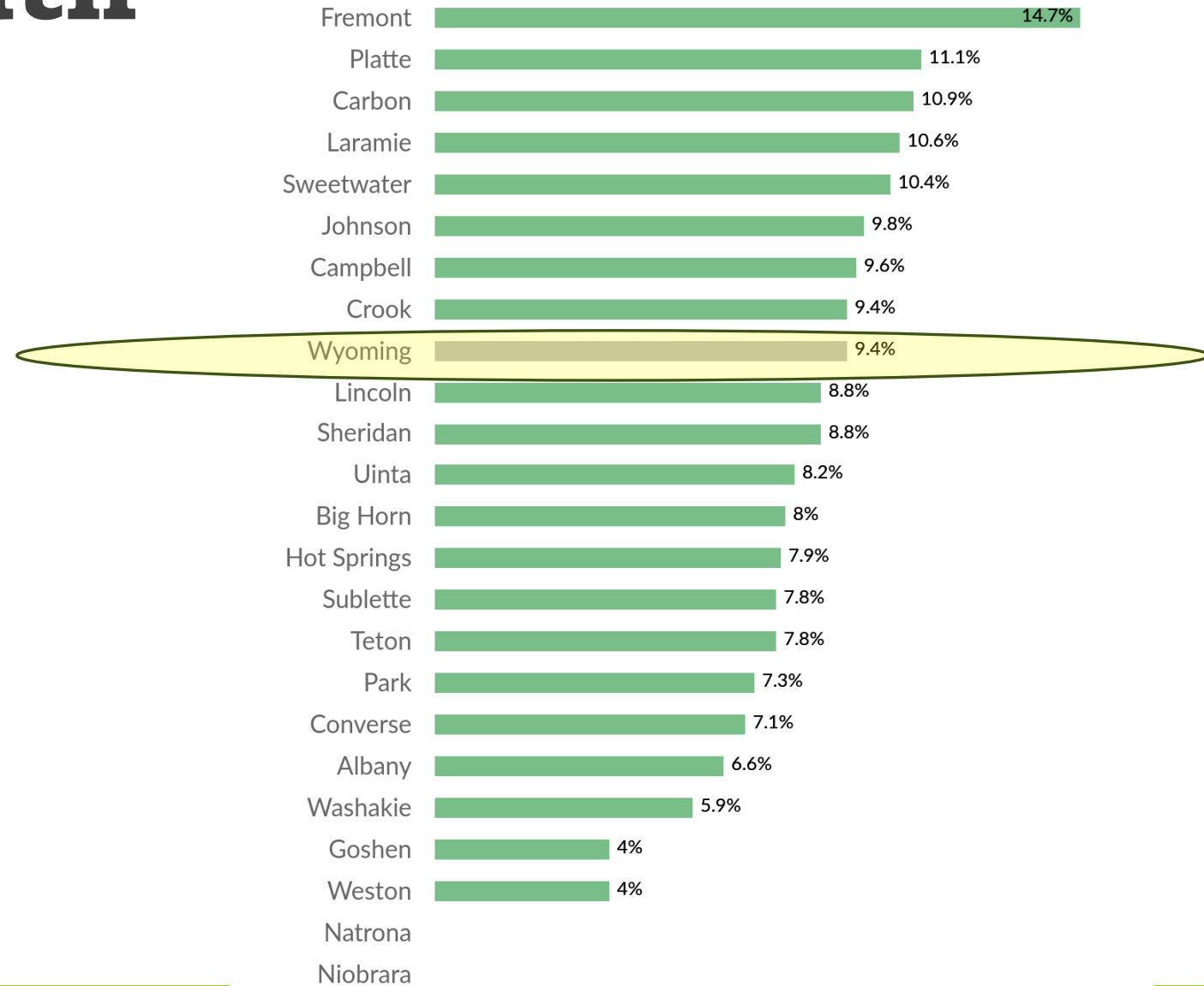
\* interpret with caution due to small numbers

^^ Rate is suppressed due to counts <5

# Wyoming Youth Suicide Attempts

## Students Who Attempted Suicide One or More Times (Grades 6 and 8)

The percentage of Wyoming students in grades 6 and 8 reporting they attempted suicide one or more times in the past 12 months.





# WY Suicides by County

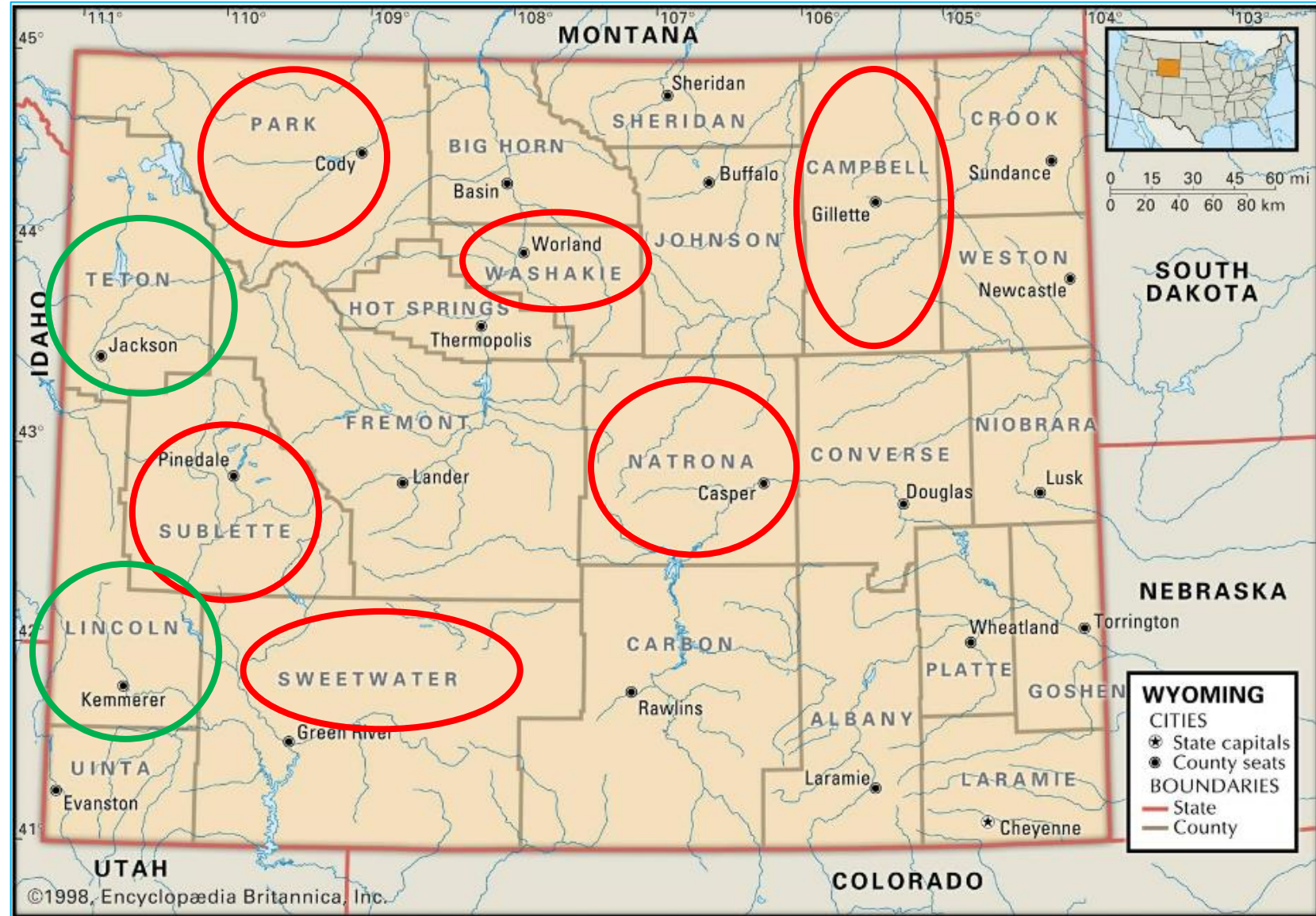
10 counties are  
above the  
state average  
for suicides.



2006-2020 WY Age Adjusted Suicide Rates <sup>1</sup> by County of Residence															
County	2006	2007	2008	2009	2010	2011	2012	2013	2014	2015	2016	2017	2018	2019	2020
Albany	18.4	-- <sup>2</sup>	22.3	20.2	-- <sup>2</sup>	19.1	13.8	12.8	15.4	-- <sup>2</sup>	23.8	19.4	36.3	-- <sup>2</sup>	27.1
Big Horn	-- <sup>2</sup>	-- <sup>2</sup>	-- <sup>2</sup>	-- <sup>2</sup>	-- <sup>2</sup>	-- <sup>2</sup>	-- <sup>2</sup>	-- <sup>2</sup>	-- <sup>2</sup>	-- <sup>2</sup>	-- <sup>2</sup>	50.3	-- <sup>2</sup>	-- <sup>2</sup>	58.0
Campbell	14.4	-- <sup>2</sup>	14.1	21.2	26.1	18.5	30.2	32.1	19.7	19.6	13.1	31.7	22.1	14.2	31.9
Carbon <sup>3</sup>	-- <sup>2</sup>	-- <sup>2</sup>	42.0	-- <sup>2</sup>	-- <sup>2</sup>	-- <sup>2</sup>	-- <sup>2</sup>	29.0	35.1	-- <sup>2</sup>	47.9	34.8	-- <sup>2</sup>	44.7	34.2
Converse	-- <sup>2</sup>	-- <sup>2</sup>	41.8	47.3	-- <sup>2</sup>	-- <sup>2</sup>	65.4	-- <sup>2</sup>	-- <sup>2</sup>	-- <sup>2</sup>	50.1	37.4	-- <sup>2</sup>	-- <sup>2</sup>	-- <sup>2</sup>
Crook	-- <sup>2</sup>	-- <sup>2</sup>	-- <sup>2</sup>	-- <sup>2</sup>	44.6	-- <sup>2</sup>	-- <sup>2</sup>	-- <sup>2</sup>	-- <sup>2</sup>	-- <sup>2</sup>	-- <sup>2</sup>	-- <sup>2</sup>	-- <sup>2</sup>	-- <sup>2</sup>	-- <sup>2</sup>
Fremont <sup>3</sup>	44.6	42.9	31.8	22.3	11.9	35.2	50.8	19.7	29.8	29.7	45.0	30.9	-- <sup>2</sup>	38.4	51.2
Goshen	-- <sup>2</sup>	-- <sup>2</sup>	-- <sup>2</sup>	-- <sup>2</sup>	-- <sup>2</sup>	-- <sup>2</sup>	-- <sup>2</sup>	-- <sup>2</sup>	-- <sup>2</sup>	31.2	-- <sup>2</sup>	-- <sup>2</sup>	-- <sup>2</sup>	-- <sup>2</sup>	44.5
Hot Springs	-- <sup>2</sup>	-- <sup>2</sup>	-- <sup>2</sup>	-- <sup>2</sup>	-- <sup>2</sup>	-- <sup>2</sup>	-- <sup>2</sup>	-- <sup>2</sup>	-- <sup>2</sup>	-- <sup>2</sup>	-- <sup>2</sup>	98.8	-- <sup>2</sup>	108.2	83.7
Johnson	-- <sup>2</sup>	-- <sup>2</sup>	-- <sup>2</sup>	-- <sup>2</sup>	-- <sup>2</sup>	-- <sup>2</sup>	-- <sup>2</sup>	-- <sup>2</sup>	-- <sup>2</sup>	-- <sup>2</sup>	-- <sup>2</sup>	-- <sup>2</sup>	-- <sup>2</sup>	-- <sup>2</sup>	-- <sup>2</sup>
Laramie	17.7	18.4	17.2	21.4	25.0	30.2	29.9	15.1	21.2	26.6	24.4	23.2	36.2	28.4	28.2
Lincoln	-- <sup>2</sup>	-- <sup>2</sup>	34.7	33.8	-- <sup>2</sup>	-- <sup>2</sup>	-- <sup>2</sup>	-- <sup>2</sup>	-- <sup>2</sup>	-- <sup>2</sup>	-- <sup>2</sup>	-- <sup>2</sup>	-- <sup>2</sup>	56.0	38.9
Natrona	24.9	26.9	13.5	24.1	28.9	21.6	30.1	23.8	24.7	36.8	22.8	29.2	33.7	40.5	20.2
Niobrara	-- <sup>2</sup>	-- <sup>2</sup>	-- <sup>2</sup>	-- <sup>2</sup>	-- <sup>2</sup>	-- <sup>2</sup>	-- <sup>2</sup>	-- <sup>2</sup>	-- <sup>2</sup>	-- <sup>2</sup>	-- <sup>2</sup>	-- <sup>2</sup>	-- <sup>2</sup>	-- <sup>2</sup>	-- <sup>2</sup>
Park	-- <sup>2</sup>	16.7	20.8	-- <sup>2</sup>	-- <sup>2</sup>	17.8	39.9	32.5	16.3	35.8	32.5	28.9	19.6	33.3	41.0
Platte	-- <sup>2</sup>	-- <sup>2</sup>	-- <sup>2</sup>	-- <sup>2</sup>	-- <sup>2</sup>	-- <sup>2</sup>	-- <sup>2</sup>	-- <sup>2</sup>	-- <sup>2</sup>	70.3	-- <sup>2</sup>	-- <sup>2</sup>	-- <sup>2</sup>	-- <sup>2</sup>	-- <sup>2</sup>
Sheridan	29.5	-- <sup>2</sup>	34.7	22.4	16.2	17.4	27.1	31.1	31.4	45.1	18.1	19.2	14.9	26.9	21.5
Sublette	-- <sup>2</sup>	-- <sup>2</sup>	-- <sup>2</sup>	-- <sup>2</sup>	-- <sup>2</sup>	48.7	-- <sup>2</sup>	-- <sup>2</sup>	-- <sup>2</sup>	-- <sup>2</sup>	70.8	-- <sup>2</sup>	-- <sup>2</sup>	-- <sup>2</sup>	-- <sup>2</sup>
Sweetwater	36.7	25.0	28.1	24.3	26.6	34.8	28.2	29.2	-- <sup>2</sup>	30.6	16.9	35.8	23.6	43.8	34.0
Teton	24.6	-- <sup>2</sup>	24.2	-- <sup>2</sup>	-- <sup>2</sup>	-- <sup>2</sup>	-- <sup>2</sup>	-- <sup>2</sup>	-- <sup>2</sup>	-- <sup>2</sup>	-- <sup>2</sup>	-- <sup>2</sup>	-- <sup>2</sup>	16.2	-- <sup>2</sup>
Uinta	-- <sup>2</sup>	-- <sup>2</sup>	-- <sup>2</sup>	44.6	38.3	-- <sup>2</sup>	51.2	-- <sup>2</sup>	-- <sup>2</sup>	31.0	30.4	24.6	-- <sup>2</sup>	48.8	58.9
Washakie	-- <sup>2</sup>	-- <sup>2</sup>	-- <sup>2</sup>	-- <sup>2</sup>	-- <sup>2</sup>	-- <sup>2</sup>	-- <sup>2</sup>	-- <sup>2</sup>	-- <sup>2</sup>	-- <sup>2</sup>	-- <sup>2</sup>	-- <sup>2</sup>	-- <sup>2</sup>	-- <sup>2</sup>	-- <sup>2</sup>
Weston	-- <sup>2</sup>	-- <sup>2</sup>	-- <sup>2</sup>	-- <sup>2</sup>	-- <sup>2</sup>	-- <sup>2</sup>	-- <sup>2</sup>	89.5	-- <sup>2</sup>	-- <sup>2</sup>	-- <sup>2</sup>	-- <sup>2</sup>	-- <sup>2</sup>	-- <sup>2</sup>	-- <sup>2</sup>
State	21.4	19.5	22.8	20.7	23.8	23.8	31.2	23.1	20.8	27.7	24.8	26.4	25.0	29.6	30.6



# Intensive Community Suicide Prevention in Six Counties





# Changing the Conversation

---

- Realistic Goals – every suicide isn't preventable
- Reducing risk – not saving everyone
- Empowering – not dictating
- Strengths and solutions
- Values and faith
- Confidence – not fear





DIFFERENT  
Problem

---

SAME  
Solution



One Size Does  
Not Fit All





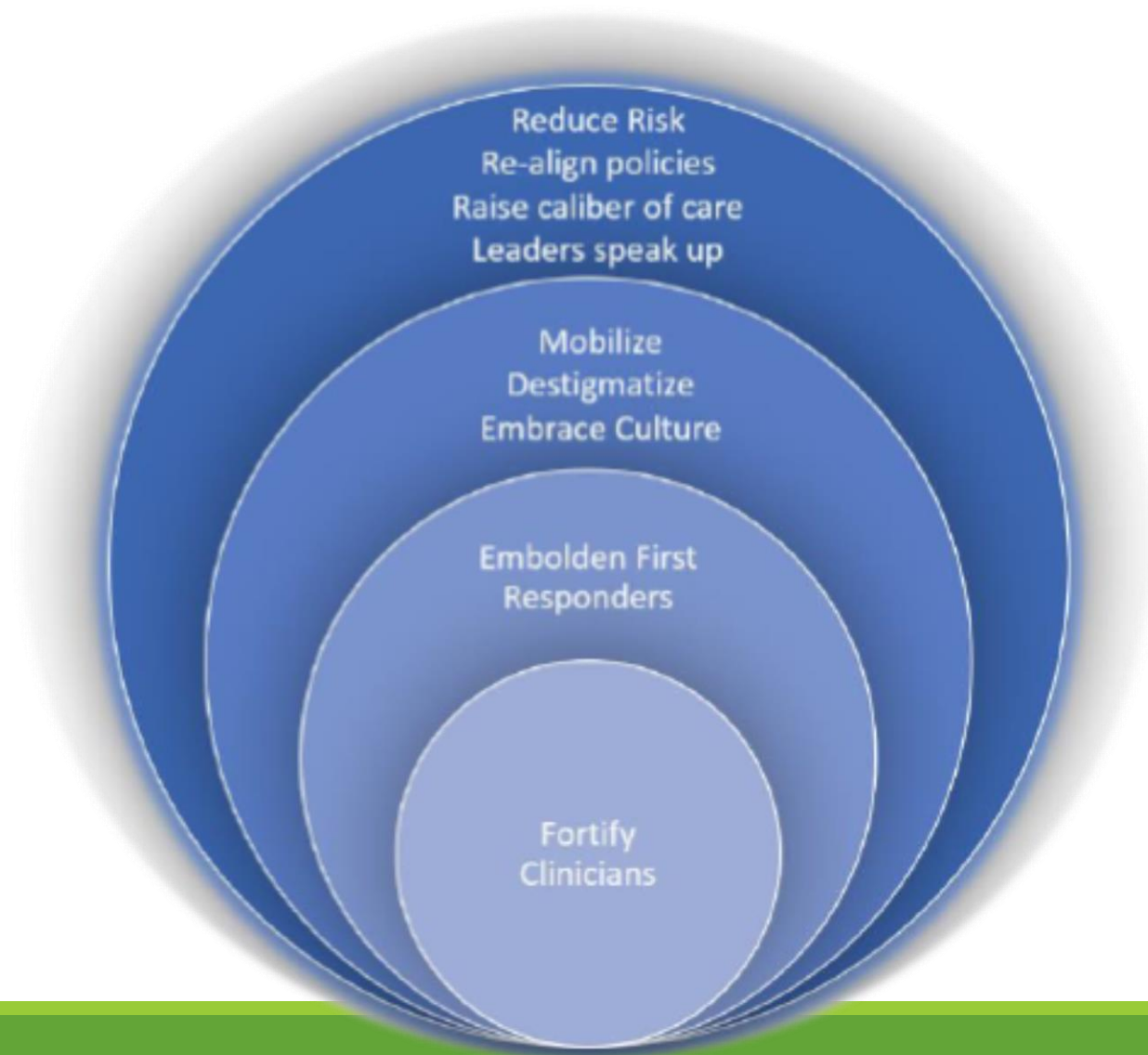
# Leveraging Wyoming Culture



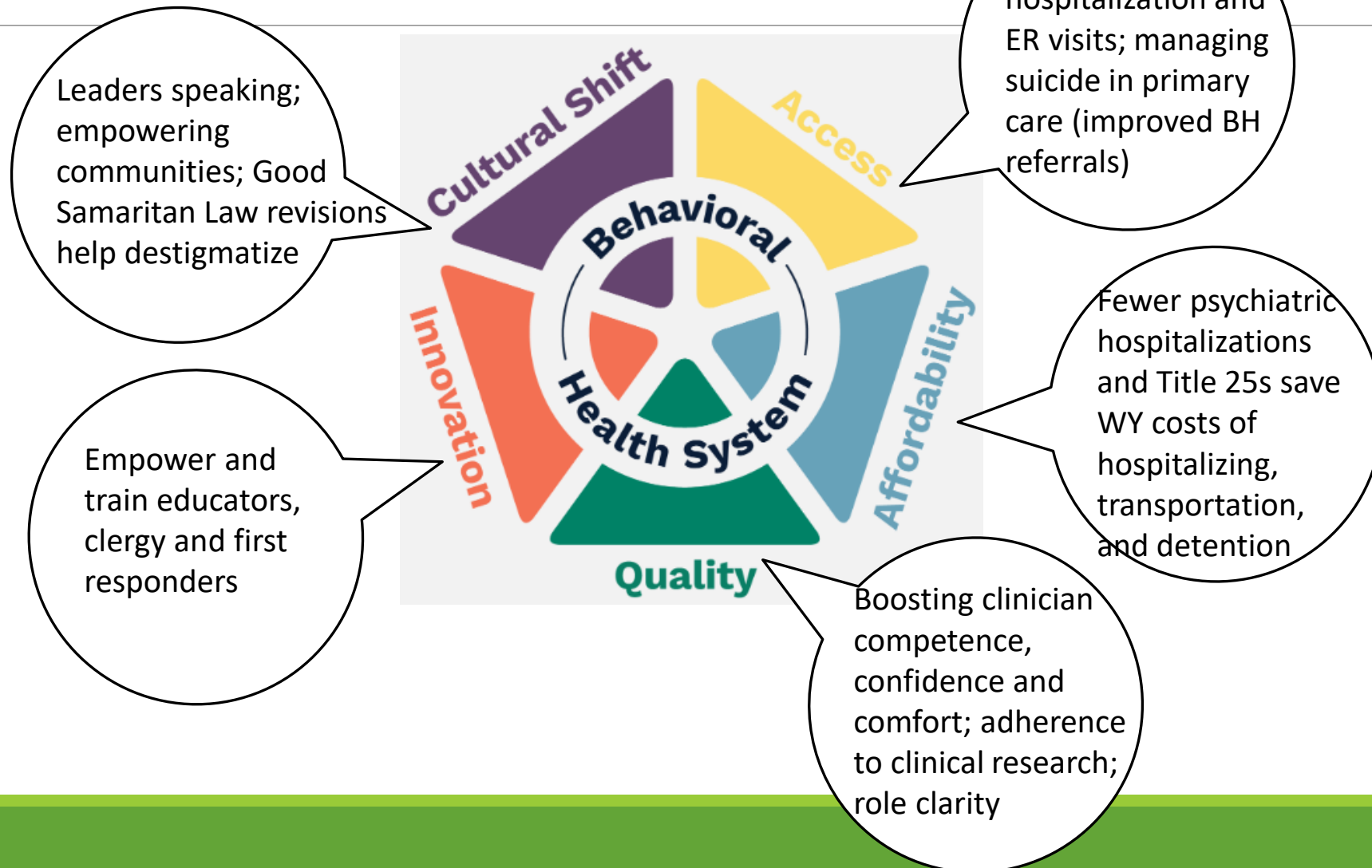
Richard Oriez/Flickr

# PROSPER,

wyoming



# PROSPER Targets Suicide According to WY's Current BH Redesign Strategy





# Our Law Enforcement Officers Can Do More...if We Permit It and Train Them

---



- ✓ Trained to analyze behaviors that are out of the ordinary
- ✓ Trained to assess risks and threats
- ✓ Trained to de-escalate

\_\_ Why can't they do more on the doorstep to avert a Title 25?

# Empower Communities





# Boosting Connectedness



# Help Yourself, Help Your Close Neighbor

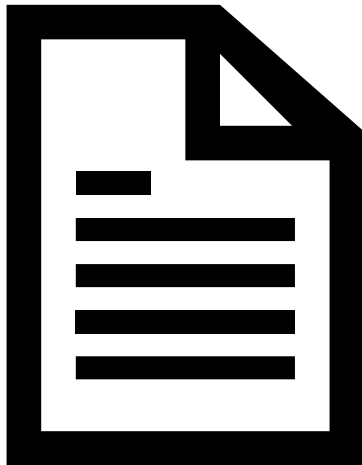
---





# Barriers to Reducing Suicides - Upstream

## Good Samaritan Law



## Title 25

The screenshot shows the Wyoming Department of Health website. The header includes the department's logo, a language selection dropdown, and a Google Translate notice. Navigation links for Divisions, News, and Contact Us are present, along with a search bar. A sidebar menu on the left lists various services, with 'Mental Health Crisis Support (Title 25)' highlighted. The main content area is titled 'Mental Health Crisis Support (Title 25)' and contains three sections: 'Learn More About Emergency Detention' with a link to a PDF summary and an option to read online; 'Emergency Detention Process' with a plus icon; and 'Always call 911 for emergencies.' with a plus icon. The bottom section is 'Learn More About Involuntary Hospitalization', also with a link to a PDF summary and an option to read online.

Wyoming Department of Health

Select Language ▼ Powered by Google Translate

Divisions ▼ News Contact Us Search ...

**Mental Health and Substance Use Treatment Services**

- Find Mental Health or Substance Use Treatment ▼
- Peer Specialists
- Projects for Assistance in Transition from Homelessness (PATH) ▼
- About Us ▼
- Provider Certification ▼
- SSDI/SSI Outreach, Access, & Recovery
- 988 Lifeline in Wyoming ▼
- Mental Health Crisis Support (Title 25)**
- Problem Gambling

**Mental Health Crisis Support (Title 25)**

Learn More About Emergency Detention

Download a pdf summary of the [Emergency Detention Process](#).

Or click on the tab to read the document online.

**Emergency Detention Process** +

**Always call 911 for emergencies.** +

Learn More About Involuntary Hospitalization

Download a pdf summary of the [Involuntary Hospitalization Process](#).

Or click on the tab to read the document online.

# PROSPER.



## Wyoming

[kent@ncrbehavioralhealth.com](mailto:kent@ncrbehavioralhealth.com)