

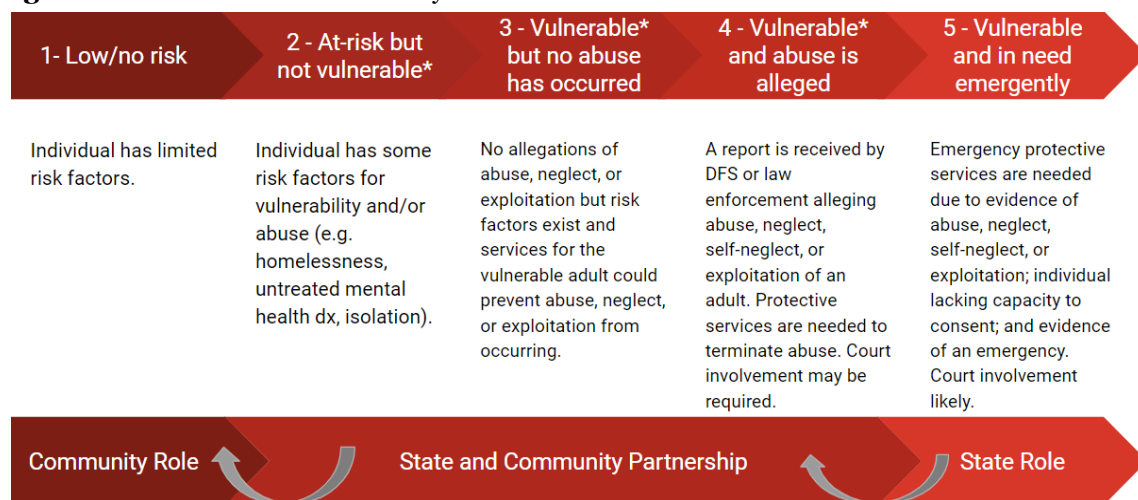
Summary of State Programs and Services for Vulnerable Adults

May 2024

Problem

Wyoming lacks a comprehensive and coordinated response to addressing the needs of vulnerable adults¹ and adults at risk of becoming vulnerable who have risk factors such as lack of social support, social isolation, difficulty meeting basic needs, a disability or mental health/substance use disorder diagnosis, and/or insufficient access to resources. Vulnerability can increase the risk of experiencing abuse, neglect, self-neglect, or exploitation. While the Department of Family Services' Adult Protective Services (APS) is required to "coordinate a protective services program..., with the goal of ensuring that every vulnerable adult in need of protective services will have access to protective services," APS is part of a larger system of services for vulnerable adults or adults at risk of becoming vulnerable that exists along a continuum and intersects with other funding streams (e.g. Wyoming Department of Health) and systems (e.g. disability, behavioral health)².

Figure 1. Continuum of Vulnerability



State-Funded Services Available to Vulnerable Adults

The State purchases and/or provides (through State and Federal funding) services and supports for young and aging vulnerable adults and adults with risk factors for abuse, neglect, self-neglect or exploitation. Table 1 summarizes programs and services for vulnerable adults organized by service category. A more detailed overview of available statewide and/or county-level services across a continuum of vulnerability and organized by service type can be made available by request. This summary³ of state-funded or provided services *does not represent an exhaustive list of all community-based resources*. Additional community-based resources are searchable on Wyoming 211 or Wyoming's Aging and Disability Resource (ADRC) Center.⁴ These additional resources include, but are not limited to, churches and faith-based organizations that provide financial or food support along with support groups, or volunteer activities; community services organizations such as the Salvation Army and Catholic Charities of Wyoming; fraternal organizations such as the Eagles or Elks Club and Knights of Columbus; and associations such as AARP and the Alzheimer's Association.

¹ Vulnerable adults are defined as individuals 18 years or older who are unable to manage and take care of themselves or their property without assistance as a result of a physical and/or mental disability, or as a result of advanced age (60 years or older). W.S. § 35-20-102(a)(xvii).

² W.S. §§ 35-20-102 through 35-20-116

³ Information has been reviewed, where possible, with lead agencies and will be updated as new information becomes available. Updated as of 5/9/24.

⁴ <https://wyoming211.org/>; <https://adrcwyoming.org/>

Table 1: Funding, Programs and Services⁵ for Vulnerable Adults and Adults At Risk of Becoming Vulnerable

Service Category	Lead Agency	Program and/or Service	Eligibility	Funding	Authority
Resource and Referral	Wyoming Department of Family Services (DFS); Wyoming Department of Health (WDH)	Aging and Disability Resource Centers (ADRC) assist elderly, disabled, and/or vulnerable adults and/or their caregivers in learning about, accessing and using programs and services to meet their needs. Wyoming’s ADRC is phone and web-based (no physical location) and connected to Wyoming 211. The current contract with Wyoming 211 for ADRC expires 9/30/25.	All ages, including caregivers	\$350,000 (ARPA); \$78,610 (Administration for Community Living (ACL) ⁶); <i>one-time funding</i>	American Rescue Plan Act (ARPA) of 2021
	Wyoming Children’s Trust Fund	Family Resource Centers , which provide on-site health and wellness programs, services, resources and referrals, activities, and classes all in one place, were a recommendation of the Governor’s Health Task Force for improving access to services for Wyoming residents across the lifespan. In 2023, the Wyoming legislature approved \$2.75M for the establishment of a statewide FRC network and community grant funding to establish or strengthen FRCs statewide. As of May 1, 2024, 17 communities have received grants pending final contract execution with a plan to issue 25 total grants.	All ages, including seniors, adults with disabilities, caregivers, etc.	\$2.75M ARPA (expires Sept 2026); \$2M ARPA Child Care Discretionary (expires Sept 2024); <i>one-time funding</i>	2023 Session - HEA0091; Section 401; Agency 049; Footnote 6
Volunteering and Companionship	WDH - Aging Division	Senior Companions are volunteers 55 and over who provide assistance and friendship to seniors who have difficulty with daily living tasks, such as shopping or paying bills. Wyoming Senior Citizens, Inc. provides senior companions services for the State.	Individuals ages 55 and older	\$250,000/ biennium (SGF) ⁷	42 USC 5013, National Senior Volunteer Corp

⁵ This table may not include every program/service for vulnerable adults and adults at risk of becoming vulnerable. The table will be updated as new information is available.

⁶ The Administration for Community Living (ACL) provided funding to states to expand the public health workforce within the aging and disability networks.

⁷ WDH provides matching funds that supplement federal funding (unknown amount) provided directly to the providers (no State pass through) from the federal government.

		Foster Grandparents are role models, mentors, and friends to children with exceptional needs. This program provides a way for volunteers age 55 and over to stay active by serving children and youth in their communities. Wyoming Senior Citizens, Inc. and Action Resource International, Inc. provide foster grandparent services.	Individuals ages 55 and older		
Housing and Utilities Assistance	U.S. Department of Housing and Urban Development (HUD)	Eight (8) Wyoming Public Housing Authorities (PHAs) promote and provide HUD programs such as the Public Housing Program , which provides decent and safe rental housing for eligible low-income families, the elderly, and persons with disabilities, and the Housing Choice Vouchers Program (Section 8) , which assists very low-income families, the elderly, and the disabled to afford decent, safe, and sanitary housing in the private market. Participants are free to choose any housing that meets the requirements of the program and is not limited to units located in subsidized housing projects. These programs are administered locally by PHAs. All HUD programs have current waitlists.	Low-income households; some preference for seniors and adults with disabilities	Unknown - Federal funding is passed through to local PHAs; <i>ongoing funding</i> .	24 CFR Part 982
	DFS - Economic Security	The Low Income Energy Assistance Program (LIEAP) is a federally-funded program that helps low-income families, the elderly, and the disabled with current or unpaid utility bills.	Households that meet income eligibility (60% State Median Income) and eligible fuel type use	\$10,763,617 (LIEAP Regular; FFY23 expenditures); <i>ongoing funding</i>	

Food and Nutrition Assistance	DFS - Economic Security	The Supplemental Food and Nutrition Program (SNAP) works to improve the nutrition of low-income individuals and families by increasing their ability to buy quality food products. SNAP also funds education and employment and training programs.	All ages ⁸ ; low-income; work requirements	\$63,737,056 (SFY23 expenditures); <i>ongoing funding</i> ⁹	Food Stamp Act of 1964; 2018 Farm Bill
	DFS - Economic Security	The Food Assistance Program (TEFAP) provides emergency food and nutrition assistance at no cost for low-income individuals, including elderly adults, through a contract with the Food Bank of Wyoming.	All ages; low-income	\$2,275,791 (SFY21 expenditures); <i>ongoing funding</i>	Emergency Food Assistance Act
	DFS - Economic Security	The Commodity Supplemental Food Program (CSFP) provides a free monthly food box for income-eligible clients age 60 or older through a contract with the Food Bank of Wyoming.	Ages 60 years or older; gross income does not exceed 130% of Federal Poverty Level (FPL)	\$23,274 (FFY23 budget); <i>ongoing funding</i>	Food and Nutrition Act; Agriculture and Consumer Protection Act of 1973
	WDH - Aging Division	<i>See “Supportive Services (Senior Centers)” below, which includes nutrition services (group meals and home-delivered meals).</i>	n/a	n/a	n/a
Supportive Services (Senior Centers)	WDH - Aging Division	Older Americans Act Programs include Supportive Services , Nutrition Services (group meals; home-delivered meals), Disease Prevention and Health Promotion, National Family Caregiver Support, Legal Assistance, and Elder Abuse Prevention. ¹⁰ <i>These programs and funding also align with</i>	Ages 60 years or older	\$7,672,224 ¹¹ (SFY23 expenditures - 6/12/23); <i>ongoing funding</i>	Older Americans Act (federal)

⁸ Between April 2023 and March 2024, adults ages 60 years or older represented approximately 20% (average of 3,582 60+ recipients) of all SNAP adult recipients.

⁹ Expenditures include one-time COVID-related funding increases.

¹⁰ The Elder Abuse Prevention Program works closely with the Long Term Care Ombudsman to investigate, advocate, mediate, and resolve issues on behalf of residents. In addition, the program provides education on elder rights and elder abuse prevention.

¹¹ Expenditures include Community Living Section Administration and all Older Americans Act program expenditures. Excludes long term care ombudsman expenditures.

		<i>Food and Nutrition Assistance; Transportation; and Legal Assistance.</i>			
		The Wyoming Senior Services Board , in consultation with the Aging Division, appropriates funding to eligible senior centers to provide services and meet the needs of older adults. These funds supplement other Title III and Wyoming Home Services programs. Many providers use this funding to support the staff necessary to keep the doors open at their respective senior centers in addition to things like paying utilities, and other overhead expenses.	Individuals served at eligible senior centers	\$3,714,330 ¹² (SFY23 expenditures - 6/12/23); SGF only; <i>ongoing funding</i>	W.S. 9-2-1211
Home Services	WDH - Aging Division	The Wyoming Home Services Program provides services designed to keep eligible participants in the least restrictive environment for as long as possible. Services include, but are not limited to, care coordination (provided by Access Care Coordinators in each county), personal care, chore services, homemaker services, respite care, personal emergency response systems, adult day care, and hospice.	Ages 18 years or older who are evaluated and determined to be at risk of premature institutionalization and are not Waiver-enrolled	\$1,828,638 (SFY23 expenditures); <i>ongoing funding</i>	W.S. 9-2-1208
Transportation Services	WDH - Aging Division	<i>See “Supportive Services (Senior Centers)” above, which includes some transportation services.</i>	n/a	n/a	n/a
	Wyoming Department of Transportation (WyDOT)	The Federal Enhanced Mobility of Seniors & Individuals with Disabilities (Section 5310) grant funds Wyoming Independent Living and Wyoming Services for Independent Living to purchase vehicles and related transit equipment to provide special transportation services for	Older adults and individuals with disabilities, including wheelchair users	\$11,973,603 (FFY24 budget); Federal Transit Authority and SGF; <i>ongoing funding</i>	49 U.S.C. 5310; 5311

¹² Expenditures include state general fund only.

		<p>older adults and people with disabilities when the transportation service provided is unavailable, insufficient, or inappropriate to meeting these needs. Funds are apportioned based on each state's share of the population for these two groups. Generally, funding is used to acquire or repair lift or ramp-equipped vehicles to ensure access for persons with disabilities.</p>			
		<p>The Federal Rural Transit Program (Section 5311) grant funds transit providers (primarily senior centers) in all 23 counties to provide quality public transit service to Wyoming's rural communities. This program uses both state funding and federal formula grants to support development, maintenance and improvement of public transportation in rural and small urban areas.</p>	<p>All ages; priority population of seniors</p>		
Vocational Rehabilitation Services	Wyoming Department of Workforce Services (DWS) - Vocational Rehabilitation Division	<p>The Vocational Rehabilitation Division provides vocational rehabilitation services necessary for eligible individuals to reach identified employment goals. Services may include, but are not limited to: counseling and guidance; deaf and blind interpretive services; facilitation of diagnosis and treatment of physical and mental impairments; personal assistance services; job search and placement assistance; and transportation services.</p>	<p>Adults with a physical or mental impairment that impedes employment and who is presumed to be able to benefit from services</p>	<p>Unknown; <i>ongoing funding</i></p>	<p>Unknown</p>
		<p>The Vocational Rehabilitation Division oversees the two Centers for Independent Living (Wyoming Independent Living and Wyoming Services for Independent Living) which provide five core independent living services including information and referral, advocacy, peer support, independent living skills training,</p>	<p>Wyoming residents with a disability that impacts them in one or more significant life areas</p>	<p>Unknown; <i>ongoing funding</i></p>	<p>Rehabilitation Act of 1973</p>

		and youth transition and nursing home transition and diversion. The Division also contracts with the WDE to administer the Older Blind Program, which serves individuals 55 years or older that are blind or visually impaired.			
Mental Health and Substance Use Treatment	WDH - Behavioral Health Division	WDH funds community-based mental health and substance abuse treatment centers to provide effective outpatient mental health and substance abuse treatment services to improve the levels of functioning for persons with mental illness and substance use disorders and decrease alcohol and drug use among those individuals engaged in substance use outpatient treatment services.	As of 7/1/24, new priority populations have been legislated for eligibility, including acute psychiatric adults, criminal-justice involved, high needs adolescents and their families, and high-need low-income/ indigent clients.	Approximately \$100 million per biennium; <i>ongoing funding</i>	W.S. 35-1-611 et. seq.
Special Education Services	Wyoming Department of Education (WDE) - Special Education Programs	Youth or young adults ages 18 through 21 are entitled to receive special education and related services under Individuals with Disabilities Education Act (IDEA) Part B as long as the individual has a qualifying disability. IDEA makes available a free appropriate public education to eligible children with disabilities and ensures special education and related services to those children.	Students ages 18-21 with a disability under IDEA	Unknown	IDEA
Medicaid-Funded Programs and	WDH - Healthcare Financing	The Community Choices Waiver (CCW) is one of two WDH Home and Community-Based Services (HCBS) Waiver programs, which help to	Ages 65 years or older or ages 19-64 years who have a	\$53,118,748 ¹³ (SFY23 expenditures ¹⁴);	W.S. 9-2-1208

¹³ The Community Choices Waiver serves 1,383 individuals under age 65, and 1,709 individuals age 65+.

¹⁴ Expenditures for the Community Choices, Comprehensive, and Supports Waiver are current as of 3/31/24. Medicaid providers have 12 months from date of services to bill, so expenditures for SFY23 are not yet closed out.

Waivers	Division, Home and Community Based Services Section	meet the needs of people who prefer to get long-term care services and supports in their home or community, rather than in an institutional setting, such as a skilled nursing facility. Note - waiver programs do not pay for housing.	disability verified as meeting Social Security Administration criteria; Medicaid-enrolled	<i>ongoing funding</i>	
		The Comprehensive and Supports Waiver , also known as ‘DD’ Waiver and the second of WDH’s two HCBS Waiver programs, provides services to eligible individuals of all ages who have an intellectual or developmental disability, or an acquired brain injury and prefer to get long-term care services and supports in their home or community, rather than in an institutional setting, such as an intermediate care facility. Note - waiver programs do not pay for housing.	All ages who have an intellectual or developmental disability, or an acquired brain injury; Medicaid-enrolled	<i>Comprehensive</i> \$117,843,336 ¹⁵ <i>Supports</i> \$10,029,013 ¹⁶ (SFY23 expenditures); <i>ongoing funding</i>	W.S. 9-2-1208
Congregate Care Housing for Older Adults and Adults of any age whose age and/or disability requires specialized settings	WDH - Aging Division	Operation of Community Facilities <ul style="list-style-type: none"> ● Wyoming Pioneer Home ● Wyoming Retirement Center ● Veterans’ Home of Wyoming 	WPH - Ages 65+ and suitability of resident’s health and service needs; WRC - Individuals requiring nursing home care; VHoW - veteran or dependent who is unable to earn a living and lacks adequate support	\$13,070,223 ¹⁷ (SFY23 expenditures - 6/12/23); <i>ongoing funding</i>	Title 25, Institutions of the State

¹⁵ The Comprehensive Waiver serves 1699 individuals under age 65, and 174 individuals age 65+.

¹⁶ The Supports Waiver serves 775 individuals under age 65, and 27 individuals age 65+.

¹⁷ Expenditures have not been deduplicated and include expenditures also represented under “Home Health, Hospice, and Nursing Facility payments”.

	WDH - Healthcare Financing Division	Home Health, Hospice and Skilled Nursing Facility payments for Medicaid eligible individuals. Wyoming Medicaid provides services designed to assist an enrolled and eligible individual in their home, skilled nursing facility or for hospice in the home/hospice facility. These services can be rehabilitative, long term care or end of life to ensure the eligible individual receives the care they need.	All ages; Medicaid-enrolled	\$81,949,965 ¹⁸ (SFY23 expenditures); <i>ongoing funding</i>	n/a
	WDH - BHD	The Wyoming State Hospital (WSH) is the only state-operated psychiatric hospital in Wyoming. WSH is a licensed acute care psychiatric inpatient hospital (104 beds) that provides psychiatric acute care stabilization services to eligible individuals.	WSH provides psychiatric acute care stabilization services to individuals involuntarily committed via W.S. 25-10-101 and competency, restoration, and not guilty by reason of mental illness (NGMI) services to those committed via 7-11-301 of the Wyoming criminal code.	Unknown; <i>ongoing funding</i>	W.S. 25-10-101; W.S. 7-11-301
	Shared Funding via WDH, DFS, and WDE	Crisis Beds, Group Homes, BOCES, RTCs, PRTFs, Youth Facilities, and Detention facilities. <i>While services may be available statewide, physical locations are not in each county and access may be dependent on provider availability, provider acceptance, substitute care licensing rules, and suitability of</i>	Individuals in need of specialized settings who are court-ordered to placement	Blended funding - estimate unknown; <i>ongoing funding</i>	Varies

¹⁸ Expenditures include home health, hospice, nursing homes and swingbed services.

		<p><i>setting for individuals' specialized needs.</i></p> <p>For access to Crisis Beds, Group Homes, RTCs, and PRTFs, a youth or young adult would have needed to be admitted to the program prior to the age of 18 and a variance to allow their continued stay would need to be approved by DFS. Typically these variances are time limited, with it generally being expected that these individuals would be discharged prior to turning 19. For residential BOCES programming, a variance approved by DFS is required if an individual turns 18 while admitted to this program type, though due to the nature of this programming a variance can also be approved for an individual to be admitted to this program type between the ages of 18-21 through a Juvenile Court-Order or by their Individualized Education Program (IEP) team.</p>			
Ombudsman Services	WDH - Director's Office	WDH employs a Long-Term Care Ombudsman and contracts with a private, nonprofit organization to employ three regional long-term care ombudsman representatives. Wyoming Senior Citizens, Inc. (WSCI) currently provides long-term care ombudsman service across the state.	Residents of long-term care facilities	\$151,609 (SFY23 expenditures through 6/12/23); <i>ongoing funding</i>	Older Americans Act (federal)
	WDH - Behavioral Health Division	WDH contracts with the Wyoming Guardianship Corporation to provide ombudsman services for persons with mental health or substance use treatment needs.	Individuals with mental health or substance use needs	\$150,000 SGF (SFY 2023)	Unknown
Adult Protective	DFS - Social Services	The Adult Protective Services (APS) program provides targeted case management	Ages 18 years or older, who are	\$80,000 ¹⁹ /	W.S. 35-20-102

¹⁹ Expenditures do not include APS staff salaries. 24 caseworkers support APS cases statewide; 6 of the 24 support APS cases exclusively. As of 7/1/23, \$40,000 has been expended.
Wyoming Department of Family Services | *Director's Office* | Page 10

Services (including emergency services)		<p>Services, support, and service referrals for vulnerable adults across the state through each of DFS’ local field offices. DFS caseworkers coordinate with community partners through local Adult Protection Teams in each community.</p> <p>There is no legal mechanism for taking an adult into protective custody due to abuse or neglect; however, DFS can identify, locate and assist in obtaining financial support for housing, food, and other needed services. If an emergency exists and if the vulnerable adult lacks the capacity to consent to the provision of protective services, DFS can, through the county or district attorney’s office, petition the court for an order for emergency services. A court may make a legal finding that an adult lacks the physical and/or mental capacity to remain independent, and could order hospitalization or an extended period of evaluation.</p>	<p>unable to manage and take care of him/herself or their property without assistance as a result of advanced age (60) or a physical and/or mental disability and who are alleged to be victims of abuse, neglect, and/or exploitation</p>	<p>biennium (State General Funds (SGF)); <i>ongoing funding</i></p> <p><i>New federal funding (\$106,818) from HHS, ACL). Continued funding unknown.</i></p>	<p>through 35-20-116</p> <p>Elder Justice Act</p>
		<p>Other community-based services (e.g. utilities, mental health services, home cleaning, transportation) and contracts with a transport company, an in-home health agency, numerous senior centers, etc. to enhance, improve, and/or expand services for elderly, disabled, and vulnerable adults.</p>	<p>Individuals served on APS caseload; individuals referred to available services</p>	<p>Amounts vary²⁰ (ARPA); <i>one-time funding</i></p>	<p>American Rescue Plan Act of 2021</p>
Legal Assistance	WDH - Aging Division	<p><i>See “Supportive Services (Senior Centers)” below, which includes legal assistance provided by Legal Aid of Wyoming.</i></p> <p>WDH contracts with Legal Aid of Wyoming to provide funds to assist seniors 60 years or older</p>	n/a	n/a	n/a

²⁰ In total, DFS received \$704,100 in COVID funding, \$645,450 in ARPA-1 funding, and \$1,349,550 in ARPA-2 funding. ADRC and guardianship services are included in these totals.
Wyoming Department of Family Services | Director’s Office | Page 11

		who receive free civil legal services or are referred to the provider-developed legal network for affordable legal services. The state provides matching state funds for maintenance of effort to allow seniors to continue to receive this legal help. Examples of legal services provided in FY 2023 include wills/estates (251), bankruptcy, collections and garnishments (86), advance directives/powers of attorney (70), private landlord/tenant (59), divorce (41), other housing (24), guardianship/conservatorship (19).			
Guardianship and Other Services (e.g. Care Management Services for complex cases)	DFS - Social Services Division	DFS contracts with the Wyoming Guardianship Corporation to provide guardianship and payee services for approximately 20 guardianship slots for APS clients and/or vulnerable adults referred by DFS. The current contract term is 5/17/22 - 9/30/24.	Ages 21 years or older; guardianship is established through a court proceeding	\$364,500 (ARPA) ²¹ ; <i>one-time funding</i>	American Rescue Plan Act of 2021
	WDH - BHD	BHD provides funding to the Wyoming Guardianship Corporation (WGC) for 24 dedicated monthly guardianship slots for qualified individuals exiting the State Hospital. Separate and apart from guardianship services, WGC is also funded to provide care management services for 46 eligible clients at a time (3 year contract); and legal representation fees for prospective guardians for seven (7) cases (2 year contract).	Individuals 21 years or older, exiting the State Hospital in need of guardianship services	\$226,500/year (SGF), of which \$76,500 funds guardianship services; <i>ongoing funding</i>	n/a

²¹ The current contract with WGC expires September 30, 2024. A total of \$249,341.01 (68%) has been expended as of 4/11/2024.