

**Fremont County  
Association of  
Governments**

**Monte Richardson**  
Mayor of Lander

**Joel Highsmith**  
Mayor of Moorhead  
Chair

**Sherry Olar**  
Mayor of Hudson  
Secretary/Treasurer

**Patricia Newsum**  
Mayor of Dubois  
Vice Chair

**Timothy Hancock**  
Mayor of Silverton

**Matt Partisan**  
Mayor of Pavilion

**Ron Sabatino**  
Fremont County  
Commissioner

February 26, 2024

Dear State of Wyoming Shooting Complex Task Force,

The Fremont County Association of Governments (FCAG) extends its sincere appreciation to the Wyoming Shooting Complex Task Force for considering Fremont County as the potential location for Wyoming's world class shooting complex. We approach this opportunity with utmost dedication and enthusiasm, envisioning a project that will not only showcase the excellence of Wyoming, but also contribute significantly to the State's economic and recreational landscape.

In framing our vision for Wyoming's world class shooting complex, FCAG envisions a facility that transcends conventional standards. Recognizing the term "world class" as a guiding principle, FCAG envisions a shooting facility that will stand as a benchmark nationally. We have meticulously assessed Fremont County's unique attributes, leveraging the expertise of well-traveled subject matter experts in firearms industry, education, competition, and range development professionals. Our aspiration is to create a facility that not only meets, but exceeds, national match scale standards across various shooting sports disciplines, now and into the future.

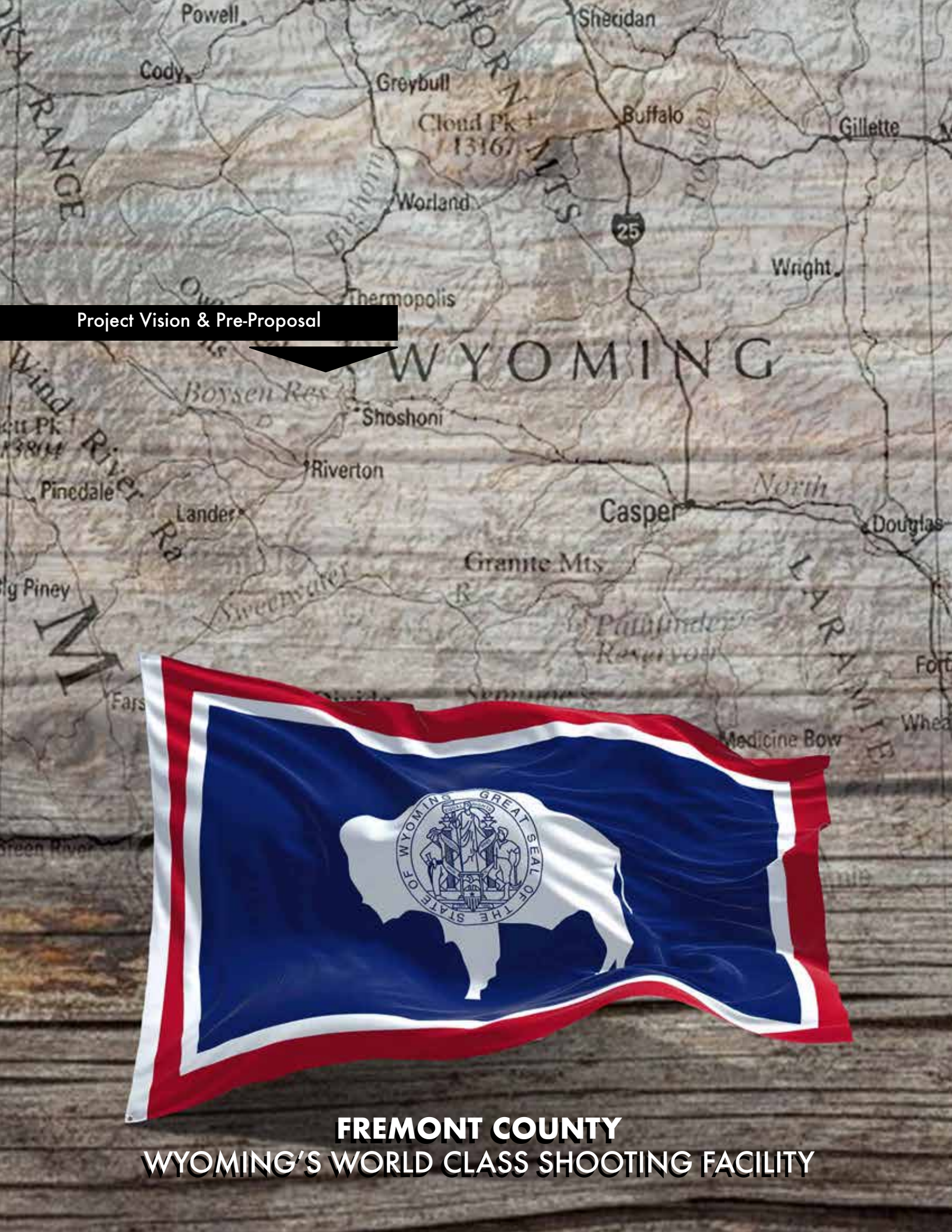
FCAG has meticulously assembled a diverse team of professionals, each bringing a wealth of experience to the table. This team, composed of local business owners, seasoned politicians, and community leaders is well-equipped to navigate the complexities inherent in a project of this magnitude. Drawing on the extensive knowledge detailed in the National Rifle Association's Range Services "Source Book," FCAG's approach is marked by experience and organization. We recognize the invaluable insights contained in this document, which will guide us in shaping a facility that stands as a testament to Wyoming's commitment to excellence in shooting sports.

Within the pages of our enclosed pre-proposal you will find a thoughtful narrative that outlines a structured approach to this monumental undertaking. This narrative acknowledges the challenges inherent in a project of this scale and showcases FCAG as prepared to navigate political, environmental, and economic hurdles. This project has many benefits extending far beyond the immediate economic impact by encompassing enhanced educational programs, job creation, and the promotion of Wyoming's outdoor ethos.

In conclusion, FCAG is honored to be part of the consideration process and extends gratitude to the Task Force for the thoughtful review. We are eager to engage in further discussions, provide additional information and address any queries that may arise.

Sincerely,  


FCAG Shooting Complex Chair | Joel Highsmith



Project Vision & Pre-Proposal

**FREMONT COUNTY  
WYOMING'S WORLD CLASS SHOOTING FACILITY**



**Included**

- Who is FCAG
- Examples
- Economic Impact & Support
- Local Economic Analysis
- Next Steps
- Objective and Vision
- Travel Considerations
- Site Selection
- Suggested Governance

**(APPENDIX)**

- Site A
- Volunteer Opportunities
- Site B
- Area Amenities



Photo Credit - Jason Wilson

## FCAG's Value Proposition

The Fremont Association of Governments (FCAG) is the sole organization of its kind in Wyoming and unites all six of Fremont County's municipalities. Each community represented by their Mayors, Dubois, Hudson, Lander, Pavilion, Riverton, Shoshoni, as well as a Fremont County Commissioner, With this unified representation Fremont County is able to present ourselves as a unified entity.

## NOTEWORTHY

Fremont County is one of two counties in the State of Wyoming with an economic development tax.

Additionally, Riverton, Lander, Dubois, Hudson, and Shoshoni all have economic development boards and committees that administer these funds.

The Wyoming state flag is shown in the top left corner, waving and casting a shadow on a pile of brown soil. The flag features a blue field with a white silhouette of a bison in the center, surrounded by a circular seal. The flag is bordered by red and white stripes.

## Objective and Vision

This document is strictly meant as a “Pre-Proposal”. We felt it necessary to showcase our vision in an effort to explain that our team understands the details and challenges ahead. If we are granted with the opportunity to advance into a proper site selection / facility evolution, there will be much more detail in a proper proposal.

Our objective is to establish a state-of-the-art facility that not only meets but exceeds national standards in a wide range of shooting disciplines. By doing so, we aim to enhance the shooting sports community and bolster state funding through increased tourism and participation in shooting events. In this initiative, we strive to showcase Wyoming as a premier destination for shooters and enthusiasts alike, further solidifying its reputation as a leader in the outdoor industry.

In shaping our vision for Wyoming’s World Class Shooting Complex, FCAG aims to transcend traditional standards. We aspire to establish a shooting facility that sets a national benchmark. FCAG has curated a diverse team of firearms professionals, local business owners, seasoned politicians, and community leaders, all of whom bring extensive experience to the project. This team is well-prepared to navigate the complexities inherent to such an endeavor. We have meticulously evaluated Fremont County’s unique qualities.

Drawing upon insights from the National Rifle Association’s Range Services “Source Book,” our approach emphasizes experience and organization. FCAG has recognized several sets of criteria outlined in this Source Book for successful shooting range developments. We noted many of these criteria align with the outline provided by the Wyoming Task Force for submitting a letter of Interest. Using this criteria as the foundation for guiding the project’s development. We aim to construct and manage a facility capable of drawing and accommodating any shooting sports discipline at a national match scale, that meets today’s shooting sports needs as well as accomidating tomorrows evolutions.



## Examples to Draw From

When the term “World Class” is invoked in reference to a shooting complex there are only a handful of relevant examples. These examples fall into three categories, military installations that allow civilian shooting such as Camp Atterbury and Camp Perry or purpose-built facilities. Most are smaller, nice “medium sized” regional facilities such as Cameo and Ben Avery. In this narrative, FCAG has chosen to envision a facility that is truly world class, leaving only one possible example to draw reference from, The NRA’s Whittington Center set just outside Raton New Mexico..

To the scale and diversification of use, The Whittington Center is currently unmatched in the level of facility it offers the Shooting Sports. Fremont County has the land, the resources and drive to offer the Whittington Center a rival.



## Travel Considerations

Fremont County and the sites we have identified as locations suitable for the facility type being discussed, uniquely centrally located. Fremont County is the only place in the state of Wyoming where a facility of this scale and draw could be placed and not allow for the tourism dollars to be given to a neighboring state.

Given the challenges associated with air travel with firearms, the majority of users who would utilize the complex would likely drive, and therefore, they would need to travel through several counties to reach Fremont County. For those who opt to fly, Fremont County offers convenient access through Central Wyoming Regional Airport, which is located in Riverton and provides regular commercial services to and from Denver through United Airlines. With the potential for shuttle service provided by WRTA.

## Economic Impact and Support

FCAG recognizes the significant economic potential of the firearm industry, and envisions numerous benefits for Wyoming, including job creation, tax revenue generation, and support for wildlife education and conservation initiatives. Anticipating these advantages, FCAG perceives the proposed shooting complex as a hub for competitions, education, and tourism, poised to stimulate economic growth not only in Fremont County but also throughout the state. Furthermore, its central location amplifies the potential ripple effect on neighboring counties, magnifying the positive impacts of this initiative.

Fremont County boasts a diverse array of dining and lodging options, ensuring that visitors to the Wyoming Shooting Complex enjoy a rich and satisfying experience. In contrast, Raton, NM, the home of The Whittington Center, is approximately 30% smaller than Riverton, resulting in fewer resources and support available for The Whittington Center compared to what Riverton and the surrounding communities could provide.





The FCAG working group has actively engaged in extensive discussions with various stakeholders, including state, local, and industry-driven economic development entities, to explore potential support for the project. These dialogues have underscored a consensus that selecting Fremont County as the shooting complex's location would receive substantial favor and backing. Fremont County's central location, coupled with its robust infrastructure and strong community ethos, positions it as the optimal choice to catalyze the growth of the shooting sports industry and spur economic development at both local and statewide levels.

Furthermore, Fremont County offers an abundance of amenities that complement and enhance the Wyoming Shooting Complex project. Within a short distance of the proposed sites, visitors can access a diverse range of attractions and services strategically positioned to attract individuals to the region and ensure their engagement before, during, and after their visit to the shooting complex. In addition, the area is the home to Wind River Indian Reservation, which is the only reservation in Wyoming, and it is a significant draw to the region.

Of paramount importance is the appeal of these additional amenities and activities to family members accompanying competitors, trainers, and students to the complex. By providing opportunities for leisure and exploration beyond the shooting range, Fremont County ensures a comprehensive experience for all visitors, encouraging longer stays and increased expenditure in the area. The resulting economic impact is poised to be substantial, benefiting not only Fremont County but also the wider state of Wyoming. By leveraging the synergy between the shooting complex and the surrounding points of interest, Fremont County strengthens its position as a premier destination for sports enthusiasts and leisure travelers alike, driving economic growth and prosperity throughout the region.

## **INDUSTRY SUPPORT**

We will not have to do this alone.

Members of FCAG's Committee have already been approached by KEY members of the Firearms Industry, inquiring about how best to support the Wyoming Shooting Complex, regardless of where it gets placed.

- National Rifle Association
- Gun Owners of America
- Brownells
- Midway USA
- Palmetto State Armory
- Remington Arms
- Leupold
- Nightforce
- CCI
- Hornady Ammunition
- Federal Ammunition
- Springfield Armory
- Mossberg Arms
- Stag Arms
- Kel-Tec
- Wyoming Arms
- MagPul
- Shaw Barrels
- Avidity Arms
- Bilson Arms



## Site Selection

In Fremont County, we are fortunate to have several locations that could accommodate a project of this magnitude. Through a comprehensive evaluation process, having identified several potential sites, initially focusing on two of the most promising locations. These sites were carefully assessed based on strict criteria outlined in the NRA Source Book including adequate size, accessibility, terrain suitability, and feasibility of land acquisition.

*(See Appendix, for Site Details)*

Fremont County's climate offers nearly ideal conditions for shooting sports. With low precipitation, gentle airflow profiles, and high elevation resulting in low air density, our region is recognized for its favorable conditions across various shooting disciplines. Our dedication to offering optimal shooting conditions is evident in our meticulous site selection criteria.

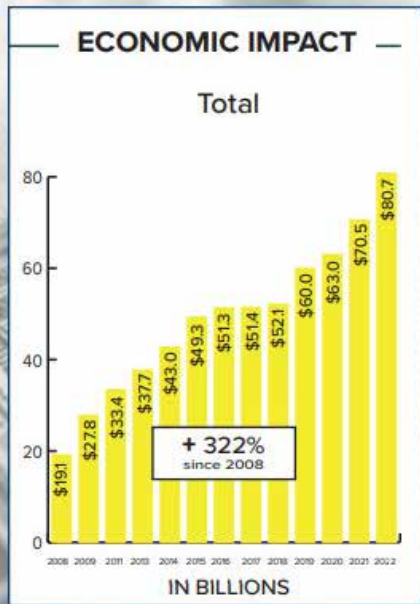
- 235 Sunshine Days Annually
- Average Wind Speed (5.2mph) Predominant NW, (240°)
- Annual Average (10") Rainfall
- Semi-Arid at typical (22% Humidity)
- High Elevation (Favorable Air Density)

*Source: NOAA @ Riverton*



# FIREARM AND AMMUNITION INDUSTRY ECONOMIC IMPACT

REPORT | 2023



Source [www.bulletin accurateshooter.com](http://www.bulletin accurateshooter.com) - NSSF REPORT 2023

## NATIONALLY

Shooting Sports Industry  
Now Generates 393,696  
Jobs in America.

The Shooting Sports industry's national economic impact rose to \$80.73 billion in 2022 from \$70.52 billion in 2021.

This growth equals more jobs that add to our local economies, averaging \$65,000 in wages and benefits,

Since 2008, federal tax payments increased by 266%, increasing Pittman-Robertson excise taxes that support wildlife conservation by 226%

Source: NSSF

## Local Economic Analysis

Visitors to Fremont County spend an average of \$115 per person during a 24-hour period and \$292 per person per trip. The complex's location in Fremont County is poised to significantly increase the average per-trip expenditure, given its central location in Wyoming.

In 2022, visitors to Fremont County contributed \$167 million to the local economy. Tourism directly sustained 1,520 jobs in Fremont County, generating around \$61.4 million in wages. Each \$1 million in travel-related spending in 2022 resulted in the creation of 7.3 tourism jobs.

For comparison, the NRA Whittington Center in New Mexico employs approximately 30 full-time workers. These figures underscore the employment potential within Fremont County, which boasted an unemployment rate of 3.1 percent in November 2023.

Source: Wind River Visitors Council

## WYOMING

Shooting Sports Industry  
Generates 3,632 Jobs  
in 2022 for Wyoming

Currently the Shooting Sports industry jobs in Wyoming generate \$1,63,482,700 in wages with a economic Impact of \$616,968,600.

Source: NSSF



## Suggested Governance

In order for the Wyoming Shooting complex to be successful, FCAG envisions a governance that is diverse in the stake holders' interest of the project. It has been suggested that the best way to facilitate the operation of such a facility would be, A private group designated to run the day-to-day operations, overseen by a steering board comprised of State, County, and Industry individuals as oversight.

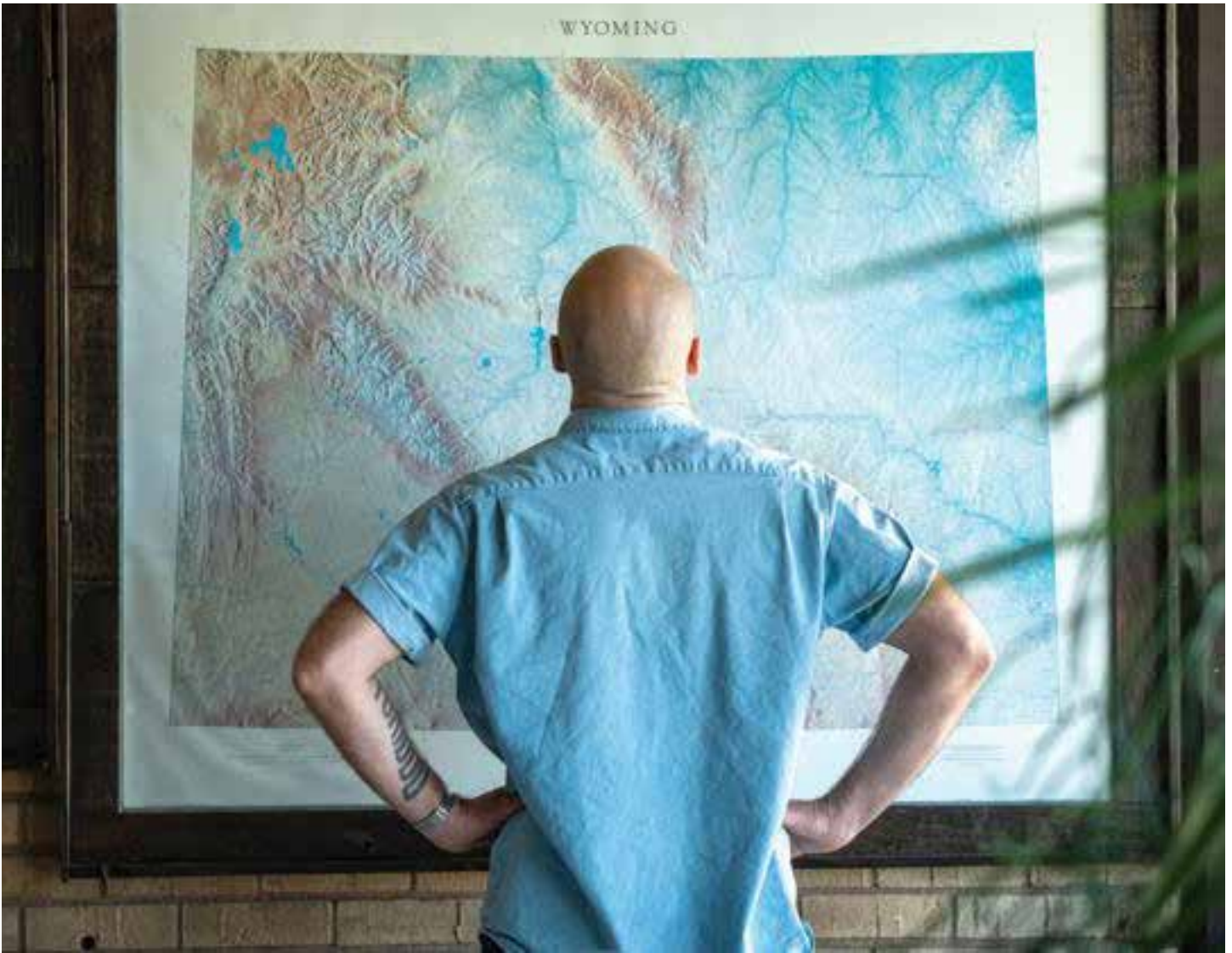
It has also been advised that it may be an advantage to use a special method of accounting called, "Enterprise Funding" for the functionality of handling the operation finance for the facility.

*- Enterprise Funding is a separate accounting and financial reporting mechanism for which revenues and expenditures are segregated into a fund with financial statements separate from all other governmental activities.*

*See Appendices for a Governance Structure*

This is an accounting tool that enables governments to isolate the financials of a public service, track its revenues and expenses and ensure its financial stability.





## Next Steps

As we lead you to the Appendix portion of the document to explore some of the key topics in more detail, we hope that this information share has generated thought provoking inspiration for the project, as much as it has for the members of the FCAG working group.

Our team is always available to field questions and take on tasks related to the advancement of the Wyoming World Class Shooting Complex. We are here to help.

With the clear benefits to the State, County and local communities this project brings to bear, this is an exciting time. Thank you for your time and attention.

# APPENDIX.

Within the next few pages we will explore some of the critical details  
Again, this document is meant to be a conversation starter, not a "Full Proposal".


## Site Detail - LAND - Site A

While maintaining alternative sites for flexibility, our primary focus rests on Site A. Situated adjacent to Boysen Reservoir to the west, it boasts excellent accessibility directly from State Highway 26. Site A spans a vast area of Bureau of Reclamation (BOR) public land, strategically positioned at the heart of Fremont County, in the center of the state.

Our preliminary design concept for Site A envisions a robust and comprehensive facility capable of accommodating nearly all of the shooting disciplines. The layout is designed to leverage the diverse natural features of the terrain, promising a unique and captivating experience for participants. With the scenic backdrop of Wind River Canyon and the Owl Creek Mountains to the north, the vistas and views at this location are truly stunning.

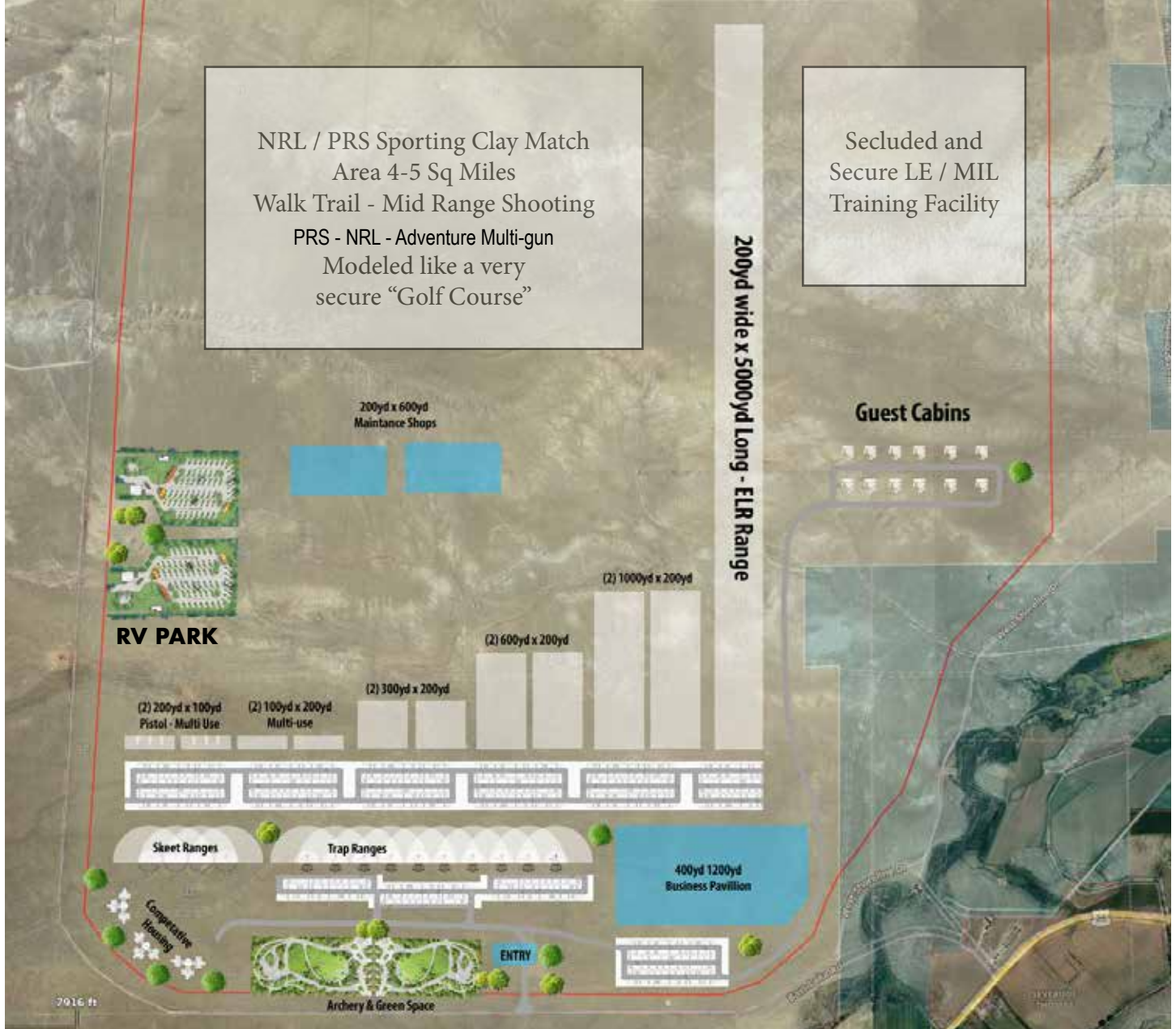
### Typical Match Attendance

- ATA Shotgun Nationals - 5200
- King of 2 Mile - 100
- Nightforce ELR - 300
- PRS Finals - 250
- NRL Finals - 320
- NRL Hunter Finals - 160
- NRL Rimfire Finals - 250
- F-Class Nationals - 3500
- USPSA Nationals - 200
- 3 GUN NATION Finals - 250
- 3 GUN PCC Finals - 100
- HeMAN Multi Gun - 150
- Red October AK Finals - 300
- Smallbore Silhouette - 625
- Highpower 1000yd - 2200
- Daniel Boone Rifle - 7000



**Site A (Annex) : 61 SQ Miles  
( 39,000 sq acres )**

**Site A: 14.5 SQ Miles  
( 9500 sq acres )**



- 61 square miles - 40K Acres of (Bureau of Reclamation, "Currently")
- Direct paved ALL Season access, state HWY 26, West of Boysen Reservoir.
- Boysen State Park adjacent and connected to the east.
- Terrain consisting of "Rolling Hills, with grassland,  
(Ideally suited for a large scale shooting range complex development.)
- Centrally located 25 minutes from Riverton and 90 Minutes from Casper.
- The direction of the property allows for the favorable "North" shooting orientation.
- Considering the size of the property, proper "Buffer Zones" easily accomplished.
- Water wells accessible at 400 to 600ft deep
- Septic system will need to be designed.
- Electrical Service ( High Plains Power ) and is relatively close  
(Service will need to be run, solar options available)
- Satellite Internet Access will be the best option for this location
- Natural gas service ( Black Hills Energy ) is relatively close.
- A small portion of Private land at the access point from HWY 26  
( A Bar and a RV park exist on this property currently )
- Bureau of Reclamation is looking to "depose" of the site.  
( Making the desired 2025 time line a real possibility )
- No issues perceived in the zoning or regulatory discussions.
- Access to the utility corridor that services Shoshoni.
- Road Maintenance, envisioned to be a joint effort of State and County.

The Rough and exploratory site "sketch" above, drawn to relative scale, shows an example of how (Site A) could utilize and accommodate ALL of the facilities required to attract a international shooting community.

" This Site has ALL of the "WOW" Factor of any location in Fremont Country. With nearly 20 years of experience developing ranges for the NRA as a RTTA, I have never seen a proposed location for a shooting range that has as much as this!"

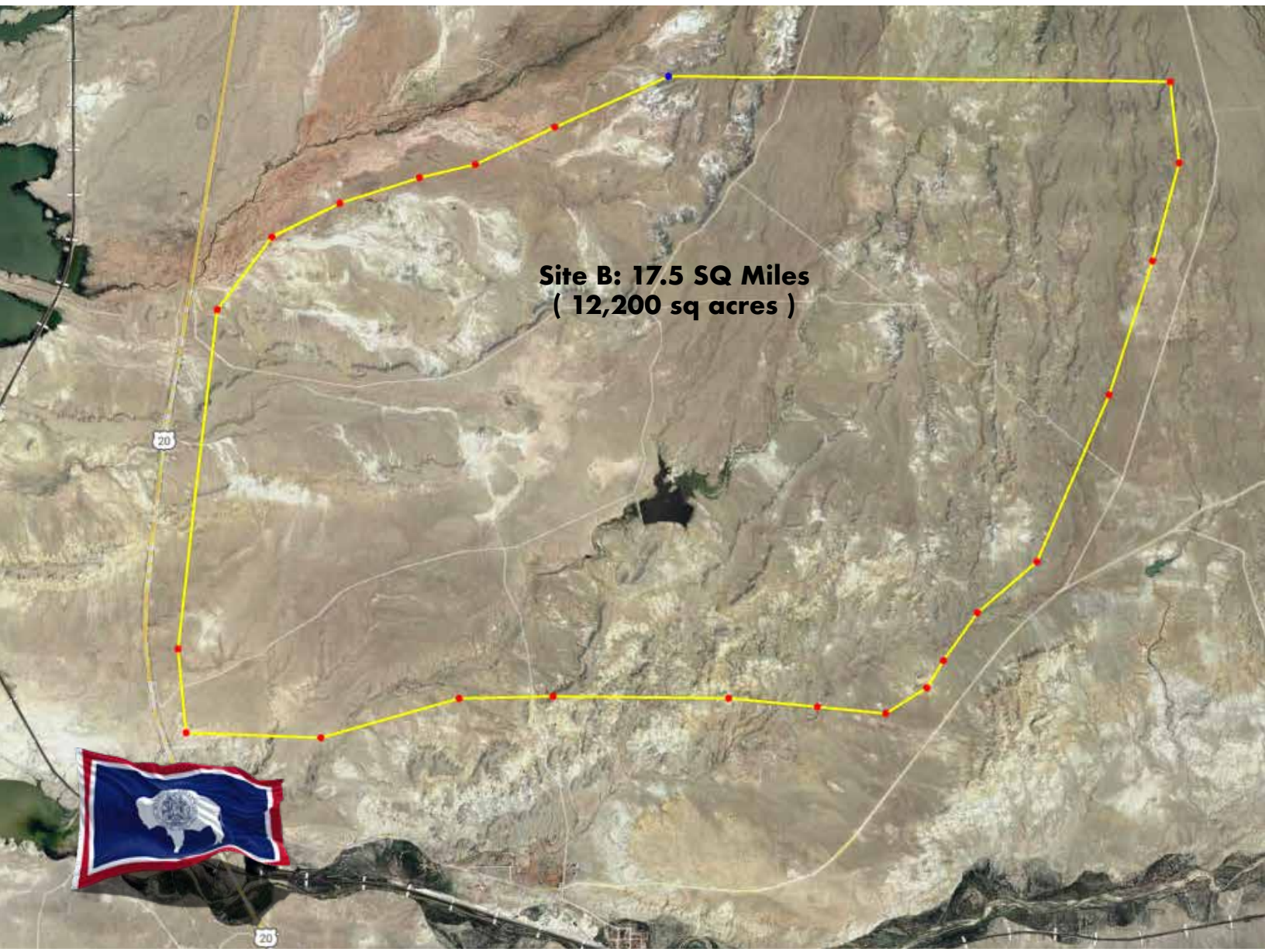
- Jason Wilson | NRA RTTA

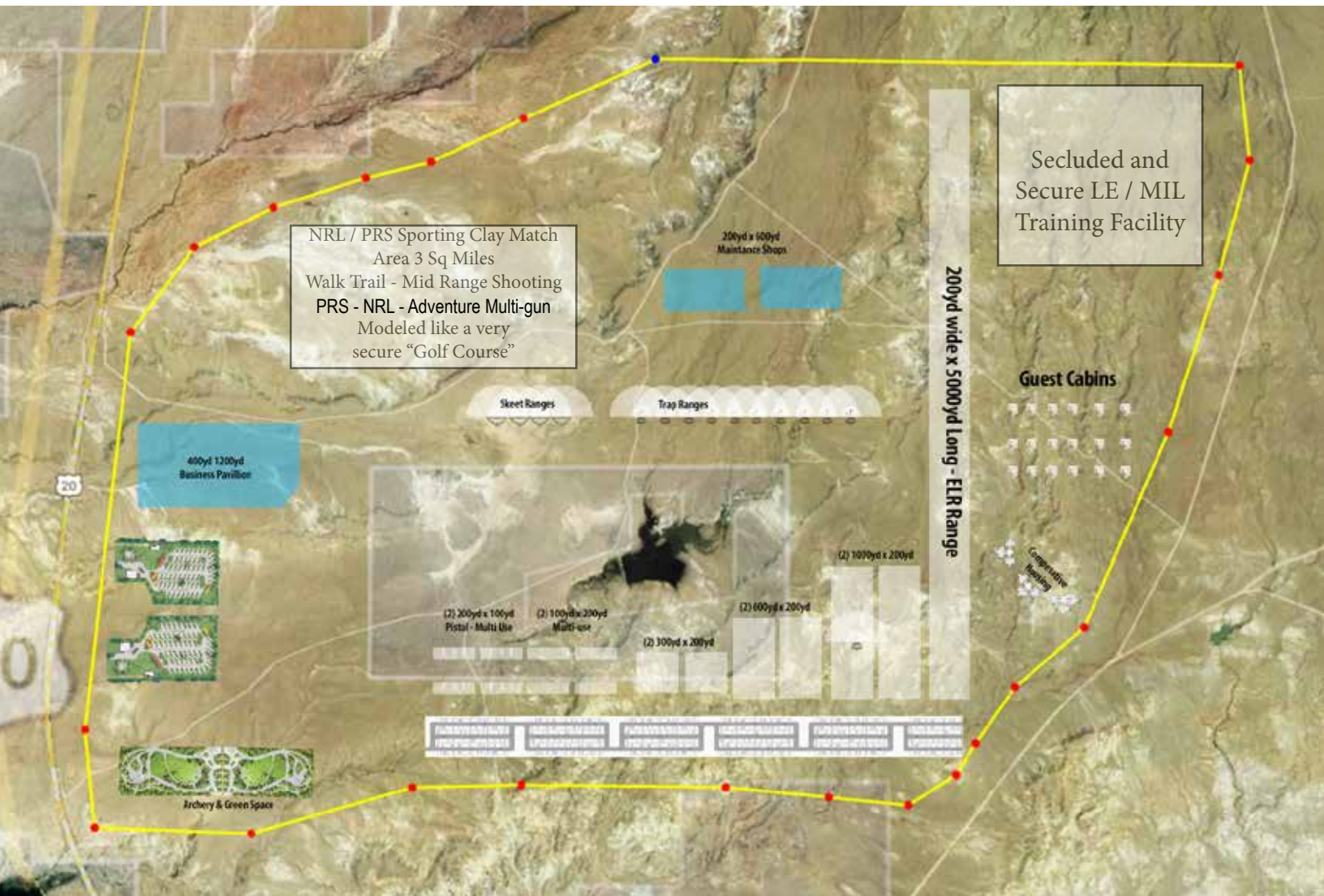


## Site Detail - LAND - Site B

Located east of Boysen off of HWY 789. This property is currently BLM and a mix of private ownership which would have to be secured prior to the project becoming viable. The Terrain of this location is fairly barren land with some "Chugwater" formation and minor Alkali soil providing a easy to clear and manage construction process.

Like Site A, the preliminary design concept for Site B envisions a comprehensive facility accommodating nearly all the various shooting disciplines. The layout aims to optimize the natural features of the terrain, providing a unique and engaging experience for participants. With the Wind River Canyon and the Owl Creeks as the scenic backdrop of this location to the north, the vistas and views for this location are stunning.





- 12,200 acres of (Bureau of Land Management with mixed State and private ownership).
- Indirect non-paved access from state HWY 789, A supplemental road would be required.
- All Season access is East of Boysen Reservoir.
- Water wells accessible at 200 to 600ft deep
- Septic system will need to be designed.
- Electrical Service ( Rocky Mountain Power ) and is relatively close  
( Service will need to be run, solar options available )
- Satellite internet access will be the best suited option for this location
- Natural gas service ( Black Hills Energy ) is NOT relatively close, but an option.
- Terrain consisting of fairly baren "foot Hills of the Owl Creeks & Copper Mountain  
( Well suited for a shooting range complex development. )
- Centrally located 25 minutes from Riverton and 90 Minutes from Casper.
- The direction of the property allows for the favorable North Shooting orientation.
- Considering the size of the property, proper "Buffer Zones" easily accomplished.
- With the current mix of land ownership, this site would need secured.
- No issues perceived in the zoning or regulatory discussions.
- Access to the utility corridor that services Shoshoni.
- Access road Maintenance, envisioned to be a joint effort of State and County.

# Wyoming State Shooting Complex

- Suggested Governance -

## Board of Directors / Steering Committee



## Facility Director

### Logistics

- Bookings
- Scheduling.
- Competition
- Training
- Lodging

### Pro Shop

- Management
- Inventory Control
- Retail Help
- Marketing

### Maintenance

- Construction Excavation
- Construction Buildings
- Sanitation
- Custodial
- Electrician
- Plumbing

### Contracts

- House Keeping
- Restaurant
- Lounge
- RV Park

A facility of this size will require a full time staff to maintain the safety, cleanliness and financial viability of the complex. We expect 25-30 Full Time employees not including the employees of the contract labor force, which would include: Restaurant Staff, Lounge Staff and the Housekeeping Staff. This would likely include an additional 20- 30 full and part time employees.

It has also been advised that it may be an advantage to use a special method of accounting called,

“Enterprise Funding” for the functionality of handling the operation finance for the facility.

- Enterprise Funding is a separate accounting and financial reporting mechanism for which revenues and expenditures are segregated into a fund with financial statements separate from all other governmental activities.

## Volunteer Opportunities

While most Instructors and Match Directors will come with their own army of volunteers, a range of this scale will likely require volunteers to help maintain operations and safety. Fremont County has a large pool of folks willing to help out when needed.

Wyoming Shooting Complex could have numerous volunteer opportunities to participate in. Benefits of volunteering at The Wyoming State Shooting Complex include being a part of the shooting sports and outdoor recreation community. Actively volunteering 8 hours each month might grant you free access to the facility. The Wyoming Shooting Complex could host one or two volunteer BBQs each year. Also, volunteers completing 48 hours in a calendar year could receive an annual Shooting Complex pass. Each Volunteer would go through a volunteer orientation, and training classes could be made available to become a range safety officer. Range safety officers also go through First-Aid and CPR classes.

Volunteer Opportunities could include:

- Archival (Photography)
- Light Maintenance
- Event Support
- Range Safety Officer



# Area Amenities & Points of interest

Hotels - Dubois, WY 82513 - Total Number of Hotel Rooms: 207 - Size of Dubois: 3.43 mi <sup>2</sup>									
	# Units/Rooms	Conf./Meet Facil.	Trailer Parking	Restaurant	Free Breakfast	Handicap Access	Pool/Hot Tub	Distance to Site (Miles)	Approximate Travel Time By Car (Minutes)
<b>Black Bear Inn</b> (Open June-September) 505 W. Ramshorn - (307) 842-2315 blackbearinn307@gmail.com • blackbearinn.com	15							91.8	84
<b>Chinook Winds</b> 6-0 S. 1st St. - (307) 455-2907 • (307) 450-3636 info@chinookwindsresort.com • chinookwindsresort.com	16	*						90.7	82
<b>Lava Mountain Lodge</b> 3577 Hwy. 26 - (307) 455-2505 • (800) 919-9570 lavamountainlodge@excelsior.com • lavamountainlodge.com	10		*	*				111	106
<b>Lonehorn Ranch Lodge &amp; RV</b> (Open May-Oct. 29) 5810 Hwy. 26 - (307) 455-2337 reservations@lonehornranch.com • thelonehornranch.com	24	*	*		*			88.8	79
<b>Rocky Mountain Lodge</b> 1349 W. Ramshorn - (307) 455-2541 • (800) 682-9323 info@rockymountainlodge-dubois.com rockymountainlodge-dubois.com	15		*					93.3	88
<b>Stagecoach Inn &amp; Suites</b> 103 E. Ramshorn St. - (307) 455-2303 • (800) 455-6090 stagecoach@duboisworld.com • stagecoachmotel-dubois.com	45	*	*					91.4	84
<b>Super 8 Motel</b> 1412 Warm Springs Dr. - (307) 247-3079 Super8.com	34		*					93.4	88
<b>Trail's End Motel</b> (Open May-Oct.) 511 W. Ramshorn - (307) 455-2540 • (800) 455-6660 trailsend@wyoming.com • trailsend.com	22		*					93.1	88
<b>Twin Pines Lodge &amp; Cabins</b> 218 W. Ramshorn - (307) 455-2600 • (800) 550-5337 manager@twinpineslodge.com • twinpineslodge.com	16		*		*			91.5	84
<b>Wind River Motel</b> (Seasonal) 519 W. Ramshorn - (307) 455-2611 • (877) 455-2621	10							91.9	84

Hotels - Lander, WY 82520 - Total Number of Hotel Rooms: 375 - Size of Lander: 4.67 mi <sup>2</sup>									
	# Units/Rooms	Conf./Meet Facil.	Trailer Parking	Restaurant	Free Breakfast	Handicap Access	Pool/Hot Tub	Distance to Site (Miles)	Approximate Travel Time By Car (Minutes)
<b>Frontier Lodge</b> 808 Main St. - (307) 332-2300 • (877) 622-2300	30		*	*				44	47
<b>Holiday Inn Express &amp; Suites</b> 1002 11th St. - (307) 332-4055 hexpress.com/lander-wy	78	*	*	*	*	*	*	44.3	49

Hotels - Riverton, WY 82501 - Total Number of Hotel Rooms: 603 - Size of Riverton: 9.78 mi <sup>2</sup>									
	# Units/Rooms	Conf./Meet Facil.	Trailer Parking	Restaurant	Free Breakfast	Handicap Access	Pool/Hot Tub	Distance to Site (Miles)	Approximate Travel Time By Car (Minutes)
<b>Rodeway Inn</b> 511 W. Main St. - (307) 856-2000 • (800) 424-6423 rodwayhotels.com	26		*					16.6	21
<b>Roomers Motel</b> 319 N. Federal Blvd. - (307) 857-1735	16							18.2	18
<b>Sundowner Station</b> 1670 N. Federal Blvd. - (307) 856-6503 • (800) 874-1116 sundownerstation.com	61	*	*	*		*		17.3	16
<b>Super 8</b> 1040 N. Federal Blvd. - (307) 863-1480 super8.com	32		*		*	*		17.6	17
<b>Tomahawk Motor Lodge</b> 208 E. Main St. - (307) 856-9025 tomahawkmotorlodge.com	32		*					18.8	21
<b>Wind River Hotel &amp; Casino</b> 180 Red Wolf Pl. - (307) 856-3954 • (800) 557-1604 windriverhotelcasino.com	90	*	*	*	*	*	*	21.8	25

Hotels - Shoshoni, WY 82649 - Total Number of Hotel Rooms: 21 - Size of Shoshoni: 3.58 mi <sup>2</sup>									
	# Units/Rooms	Conf./Meet Facil.	Trailer Parking	Restaurant	Free Breakfast	Handicap Access	Pool/Hot Tub	Distance to Site (Miles)	Approximate Travel Time By Car (Minutes)
<b>Desert Inn Motel</b> 505 W. 2nd St. - (304) 290-0040	21		*			*		7.6	9

Hotels - Thermopolis, WY 82443 - Total Number of Hotel Rooms: 271 - Size of Thermopolis: 2.5 mi <sup>2</sup>									
	# Units/Rooms	Conf./Meet Facil.	Trailer Parking	Restaurant	Free Breakfast	Handicap Access	Pool/Hot Tub	Distance to Site (Miles)	Approximate Travel Time By Car (Minutes)
<b>Best Western Plaza Hotel</b> 116 E. Park St. Hot Springs State Park - (307) 664-2539 bestwestern@posahotels.net	36	*	*	*	*	*	*	37	43
<b>Hot Springs Hotel</b> 115 E. Park St. Hot Springs State Park - (307) 664-3131 hot-springs-hotels@gmail.com	80	*	*	*	*	*	*	37	43
<b>El Rancho Motel</b> 924 Shoshoni St. - (307) 664-2341 elranchohotelbusiness.com	12		*			*		35.2	39
<b>Elk Antler Inn</b> 501 S. 6 <sup>th</sup> St. - (307) 664-2325 elkantlerinn307@gmail.com	16		*			*		35.7	38

Hotels In Lander Continued									
	# Units/Rooms	Conf./Meet Facil.	Trailer Parking	Restaurant	Free Breakfast	Handicap Access	Pool/Hot Tub	Distance to Site (Miles)	Approximate Travel Time By Car (Minutes)
<b>The Inn at Lander, Travelodge by Wyndham</b> 250 Grandview Dr. - (307) 332-2847 travelodge@landersheraton.com • innatlander.com	96	*	*	*	*	*	*	43.2	45
<b>The Lander Motel</b> 529 Main St. - (307) 206-5144 hollis@thelandermotel.com • thelandermotel.com	24				*	*		43.7	40
<b>The Mill House</b> 125 Main St. - (307) 349-9254 landermillhouse@gmail.com • millhouselander.com	5							43.2	45
<b>Rodeway Inn &amp; Suites Pronghorn Lodge</b> 150 E. Main St. - (307) 332-3940	56	*	*	*	*	*	*	43.2	45
<b>Shoshone Rose Casino &amp; Hotel</b> 5000 Hwy. 267 - (307) 206-7004 info@shoshonerose.com • shoshonerose.com	61	*	*	*	*	*	*	48.3	50
<b>Silver Spur Motel</b> 1243 Main St. - (307) 332-5180	25		*					44.4	48

Hotels In Thermopolis Continued									
	# Units/Rooms	Conf./Meet Facil.	Trailer Parking	Restaurant	Free Breakfast	Handicap Access	Pool/Hot Tub	Distance to Site (Miles)	Approximate Travel Time By Car (Minutes)
<b>Comfort Inn &amp; Suites</b> 2020 N. Federal Blvd. - (307) 463-4115 • (800) 424-6423 comforthotels.com	63	*	*	*	*	*	*	17.1	17
<b>Hampton Inn &amp; Suites</b> 2500 N. Federal Blvd. - (307) 856-3500 • 800-426-7866 hiltonhamptoninn@gmail.com • hilton.com	89	*	*	*	*	*	*	16.9	16
<b>Holiday Inn—Riverton Convention Center</b> 900 E. Sunset Dr. - (307) 856-8100 • (888) 465-4329 hiverton@holidayinn.com • holiday.com	120	*	*	*	*	*	*	17.8	18
<b>Jackpine Motel</b> 120 S. Federal Blvd. - (307) 856-9251	18		*			*		18.4	19
<b>Motel 6</b> 302 E. Fremont Ave. - (307) 856-9201 • motel6.com	8		*					18.7	20
<b>O' Wyoming</b> 414 N. Federal Blvd. - (307) 856-9223	23		*			*		18.1	18
<b>Paintbrush Motel</b> 1500 N. Federal Blvd. - (307) 854-9238 • (800) 204-9238 paintbrushmotel.com	23		*			*		17.3	16

Hotels In Thermopolis Continued									
	# Units/Rooms	Conf./Meet Facil.	Trailer Parking	Restaurant	Free Breakfast	Handicap Access	Pool/Hot Tub	Distance to Site (Miles)	Approximate Travel Time By Car (Minutes)
<b>Fountain of Youth Inn</b> 600 Broadway St. - (307) 864-3255	24		*			*		36.4	41
<b>Paintbrush Inn</b> 800 S. 6 <sup>th</sup> St. - (307) 864-3155 rooms@paintbrushinn.com • paintbrushinn.com	14		*			*		35.7	39
<b>Quality Inn of Thermopolis</b> 166 Hwy. 20 S. - (307) 864-5515 thermopolisqualityinn.com	52	*	*	*	*	*	*	34.6	37
<b>Rainbow Motel</b> 408 Park St. - (307) 864-2129 thermopolis.com	17					*		36.5	40
<b>Roundtop Mountain Vista</b> 412 N. 6 <sup>th</sup> St. - (307) 864-0878 day@roundtopmountainvista.com • roundtopmountainvista.com	11					*		36.3	40
<b>Two Rivers Inn</b> 491 Park St. - (307) 864-3400 tworiversinn@gmail.com • tworiversinn.com	9					*		36.5	42



Total Number of Hotel Rooms: 1,477

**RV Parks & Campgrounds - Dubois, WY 82513** - Total Number of Sites: 240 - Size of Dubois: 3.43 mi<sup>2</sup>

	# Full RV Hook-Ups	# Pull-Thrus	# Rental Cabins	# Tent Sites	Wi-Fi	Laundry	Restrooms	Distance to Site (Miles)	Approximate Travel Time (By Car Minutes)
<b>Dubois Campgrounds</b> (privately owned) 105 Kelsey • (307) 455-2251 duboiscampgrounds@gmail.com • duboiscampgrounds.com	20	5	1	10	*	*	*	02.7	88
<b>Dubois Wind River KOA</b> (privately owned) May 19-Sept. 24 • (800) 662-0806 225 Wally St. • (307) 455-2238 • (800) 662-0806 dubois@koa.com • www.koa.com/campgrounds/dubois	43	19	11	12	*	*	*	91.5	87
<b>Lava Mountain Lodge</b> (privately owned) 3577 Hwy. 26 • (307) 455-2506 • (800) 919-9570 www.lavamountainlodge.com • www.lavamountainlodge.com	5	1	5	3	*	*	*	111	106
<b>Longhorn Ranch Lodge &amp; RV Resort</b> May-Oct. • (privately owned) 5810 Hwy. 26 • (307) 455-2337 masonstora@thelonghornranch.com • thelonghornranch.com	48	25	3	6	*	*	*	88.8	80
<b>Solitude RV Park</b> (privately owned) 3405 Hwy. 26 • (307) 450-3091 solitudewaycamping@gmail.com • solitudepark.com	19		4		*			90.9	84
<b>Windhaven RV Resort</b> May 15-Oct. 1 • (privately owned) 146 S. 1st St. • (307) 655-5427 info@windhavenresort.com • windhavenresort.com	25	1			*	*	*	90.8	84

**RV Parks & Campgrounds - Lander, WY 82520** - Total Number of Sites: 212 - Size of Lander: 4.67 mi<sup>2</sup>

<b>Dexter Mill RV Park</b> (privately owned) 3 Vajestic Rd., Atlantic City, WY • (307) 702-6300	5	1	0	4	*	*	*	71.1	75
<b>Louis Lake Lodge</b> June 15-Oct. 15 • (privately owned) 111 Louis Lake Rd. • (312) 731-7596 info@louislake.com • louislake.com	0	0	5	8	*	*	*	78.8	85
<b>Maverick RV Park and Campground</b> (privately owned) 1104 N. 2nd St. • (307) 349-2938 • maverickpark.com	38	12	0	15	*	*	*	44.1	47
<b>Mountain Range RV Park</b> (privately owned) 186 Sunflower St. • (307) 438-9795 • mountainrange.com	23	23	0		*	*	*	44.5	48

**RV Parks & Campgrounds - Boysen State Park, WY 82649** - Total Number of Sites: 228

	# Full RV Hook-Ups	# Pull-Thrus	# Rental Cabins	# Tent Sites	Wi-Fi	Laundry	Restrooms	Distance to Site (Miles)	Approximate Travel Time (By Car Minutes)
<b>Lower Wind River Campground</b> (publicly owned) Lower Wind River Rd. • (307) 876-2796		24		15			*	23.9	25
<b>Upper Wind River Campground</b> (publicly owned) Upper Wind River Rd. • (307) 876-2796		20	3	21			*	23.6	25
<b>Brannon and Tamarack Campgrounds</b> (publicly owned) • (Brannon Rd. • (307) 875-2796)		28		18			*	22.2	25
<b>Tough Creek Campground</b> (publicly owned) Tough Creek Campground Rd. • (307) 876-2736		20		48			*	15.7	20
<b>Lakeside Campground</b> (publicly owned) Hwy. 20 • (307) 876-2756		4		27			*	11.2	13

\*Dump station for all Boysen campgrounds is located at the Boysen State Park Headquarters: 120 Boysen Dr.

**RV Parks & Campgrounds - Thermopoli, WY 82443** - Total Number of Sites: 200 - Size of Thermopoli: 2.5 mi<sup>2</sup>

<b>Crippled Spider RV Park</b> (privately owned) 123 Hwy. 20 N. • (307) 921-9068 • (307) 654-1211 therriplespider@gmail.com	19	40	0	8				40.5	47
<b>Eagle RV Park</b> (privately owned) 204 Hwy. 20 S. • (307) 654-3262 eaglepark.com • eaglepark@co.wyoming.net	40	33	6	3	*	*	*	34.1	35
<b>Fountain of Youth RV Park</b> (privately owned) 350 Hwy. 20 N. • (307) 854-2085 campingofyouth.com	64	64	3	24	*	*	*	38.6	44
<b>SonRise Grass Creek Guest Ranch</b> (privately owned) 3809 Grass Creek Rd. • (307) 867-2090 rgn@grn.com	6	4			*	*	*	73.9	80
<b>Wyoming Gardens RV Park</b> (privately owned) 720 Shoshoni St. • (307) 861-2778 wyominggardensrvpark.com	17	17	4		*	*	*	35.4	37

Total Number of RV Sites, Cabins and Tent Sites: 1,215

**(RV Parks and Campgrounds in Lander Continued)**

	# Full RV Hook-Ups	# Pull-Thrus	# Rental Cabins	# Tent Sites	Wi-Fi	Laundry	Restrooms	Distance to Site (Miles)	Approximate Travel Time (By Car Minutes)
<b>Mountain View Campground</b> (privately owned) 89 Roy Lake Rd. • (307) 332-9333	11	11	0	11				45.0	49
<b>The Rock Shop Inn</b> (privately owned) 4260 Hwy. 28 • (307) 332-9015 therockshop@gmail.com • therockshop.com	3	1	5	6	*	*	*	73.6	75
<b>Sleeping Bear RV Park &amp; Campground</b> (privately owned) 715 E. Main St. • (307) 332-5159 spbear@yahoo.com • sleepingbearpark.com	40	19	3	3	*	*	*	43.5	45
<b>Twin Pines RV Park &amp; Campground</b> May 1 - Oct. 31 • (privately owned) 7345 Hwy. 780 • (307) 332-4008 • (800) 965-4008 info@twinpinesrvpark.com • twinpinesrvpark.com	5	1	0	4	*	*	*	49.2	52

**RV Parks & Campgrounds - Riverton, WY 82501** - Total Number of Sites: 100 - Size of Riverton: 9.78 mi<sup>2</sup>

<b>Jim Moss Arena Campground</b> (privately owned) 500 Light Mile Rd. • (307) 851-8654 jimarena@gmail.com • jimarena.com	1	15	0	40	*	*	*	24.2	24
<b>Stilson RV Sites, LLC</b> (privately owned) 501 Hurst St. • (307) 851-7490 stilsonrvsites@gmail.com • stilsonrvsites.com	5		0					19.3	22
<b>Wild Willow Camping and Fishing</b> (privately owned) 11124 Hwy. 788 • (307) 857-3002 wildwillowcampingandfishing@gmail.com	19	19	0	10	*	*	*	12.3	11
<b>Wind River RV Park</b> (privately owned) 1618 E. Park Ave. • (307) 857-3000 paper@wyoming.com • windriverpark.com	60	38	0		*	*	*	18.8	20

**RV Parks & Campgrounds - Shoshoni, WY 82649** - Total Number of Sites: 115 - Size of Shoshoni: 3.58 mi<sup>2</sup>

<b>B&amp;K Shoreline Stop</b> (privately owned) 14 (Bass Lake Rd.) • (307) 857-0100 b&kshoshoni@wyoming.com	18	32	0		*	*	*	1.8	2
<b>Crossroads RV Park</b> (privately owned) 113 W. 9th St. • (307) 851-3083 jrossad@shoshoni.com	30	20	0		*	*	*	8.2	10
<b>Desert Inn Motel</b> (privately owned) 505 W. 2nd St. • (307) 299-9040	18	18	0		*	*	*	7.6	9

**Restaurants - Dubois, WY 82513** - Total Number of Restaurants: 12 - Size of Dubois: 3.43 mi<sup>2</sup>

	Sit-Down Restaurant	Fast Food	Capacity	Distance to Site (Miles)	Approximate Travel Time (By Car Minutes)
<b>22's BBQ</b> 106 E. Ramshorn • (307) 455-2548 www.22sbbq.com	*			98.4	92
<b>Cowboy Café</b> 115 E. Ramshorn • (307) 455-2595 www.cowboycafe.com	*			98.3	92
<b>Crooked Creek, Union Pass</b> 70 Fir Rd. • (307) 455-2815 www.crookedcreekunionpass.com	*			113	117
<b>El Jorro</b> 1422 Warm Springs Dr. • (307) 455-2333	*	*		100	98
<b>The Lone Buffalo Steakhouse</b> 120 E. Ramshorn • (307) 455-4222	*			98.4	92
<b>The Moose Outpost</b> 616 W. Ramshorn • (307) 455-3030	*			98.4	92
<b>Nana's Bowling and Bakery</b> 809 Mecklen St. • (307) 455-3000 www.nanasbowlingandbakery.com	*			99.1	95
<b>Noon Rock Pizza</b> 112 E. Ramshorn • (307) 455-3131 www.noonrockpizza.com	*			98.4	92
<b>The Perch Coffee House</b> 132 E. Ramshorn • (307) 455-2784 www.theperchcoffeehouse.com	*			98.4	92
<b>Taylor Creek Sinclair, Deli &amp; Pizzeria</b> 1426 Warm Springs Dr. • (307) 455-3320	*			100	96
<b>Village Café</b> 515 W. Ramshorn • (307) 455-2122 www.villagecafedubois.com	*			98.5	93
<b>Wilderness Boundary Restaurant</b> Lava Mountain Lodge • 3577 Hwy. 26 • (307) 455-2508	*			111	106

# Area Amenities & Points of Interest (CONT)

Restaurants - Ethel, WY 82510					
	Sit Down Restaurant	Fast Food	Capacity	Distance to Site (Miles)	Approximate Travel Time By Car (Minutes)
<b>Morning Star Restaurant</b> Little Wind Casino • 500 Blue Sky Hwy. • (307) 435-7000	*			49.2	47
<b>Paintbrush Grill</b> Little Wind C-Store • 693 Blue Sky Hwy. • (307) 332-4522	*			50.1	48
Restaurants - Fort Washakie, WY 82514					
<b>Shoshone Tribal Service &amp; Food Mart</b> 3 N. Fork Rd. • (307) 332-2022		*		56.7	59
Restaurants - Hudson, WY 82515					
<b>Kai Espresso</b> 109 Main St. • (307) 332-2211		*		40.1	41
<b>Sylvia's Bar &amp; Steakhouse</b> 173 S. Main St. • (307) 332-4516	*			40.2	41
Restaurants - Lander, WY 82520 - Total Number of Restaurants: 22 - Size of Lander: 4.67 mi <sup>2</sup>					
<b>Breadboard</b> 1350 Main St. • (307) 332-4000 <a href="http://breadboardland.com">breadboardland.com</a>	*	*		51.4	54
<b>Cowfish/Lander Brewing Co.</b> 148 Main St. • (307) 332-8227 <a href="http://cowfishlander.com">cowfishlander.com</a>	*			50.2	52
<b>Cruz Coffee</b> 300 Main St. • (307) 335-5139 <a href="http://cruzcoffee.net">cruzcoffee.net</a>	*			50.4	53
<b>Dairy Land Drive In</b> 877 Main St. • (307) 332-3312	*	*		51.1	55
<b>Deka-Guy Hee, Shoshone Rose Casino</b> 5680 Hwy. 287 • (307) 206-7040 <a href="http://shoshonerose.com">shoshonerose.com</a>	*			55.2	56
<b>Domino's Pizza</b> 175 W. 4th St. • (307) 335-7670 <a href="http://dominos.com">dominos.com</a>		*		50.5	54

(Restaurants in Lander Continued)					
	Sit Down Restaurant	Fast Food	Capacity	Distance to Site (Miles)	Approximate Travel Time By Car (Minutes)
<b>Subway</b> 860 Main St. • (307) 332-6564 <a href="http://subway.com">subway.com</a>	*	*		51.1	54
<b>Taco John's</b> 870 Main St. • (307) 332-0291 <a href="http://tacojohns.com">tacojohns.com</a>	*	*		51	54
<b>White Bark Cafe</b> 135 N. 2nd St. <a href="http://whitebarklander.com">whitebarklander.com</a>	*			50.3	53
Restaurants - Riverton, WY 82501 - Total Number of Restaurants: 39 - Size of Riverton: 9.76 mi <sup>2</sup>					
<b>789 Casino Grill</b> 10309 Hwy. 789 • (307) 857-9451 <a href="http://789smokeandtopcasino.com">789smokeandtopcasino.com</a>	*			27.3	30
<b>Arby's</b> 1140 W. Main St. • (307) 856-0203 <a href="http://arbys.com">arbys.com</a>	*	*		26.7	31
<b>Bar 10</b> 114 S. Broadway Ave. • (307) 212-9181 <a href="http://bar10wyo.com">bar10wyo.com</a>	*			25.7	28
<b>The Breadboard</b> 124 E. Washington Ave. • (307) 856-7044 <a href="http://thebreadboardriverton.com">thebreadboardriverton.com</a>	*	*		25.9	29
<b>Brown Sugar Coffee Roastery</b> 203 E. Main St. • (307) 856-1116 <a href="http://bmswritingscoffee.com">bmswritingscoffee.com</a>	*			25.7	28
<b>The Buffalo, Wind River Casino</b> 180 Red Wolf Pl. • (800) 657-1004 • (307) 851-7111 <a href="http://windriverhotelcasino.com">windriverhotelcasino.com</a>	*			28.9	33
<b>Bunk's BBQ</b> 201 E. Washington Ave. • (307) 463-0773 <a href="http://google.com/maps/@43.1666667,-106.8333333,15z">google.com/maps/@43.1666667,-106.8333333,15z</a>	*			25.8	28
<b>Burger King</b> 2150 N. Federal Blvd. • (307) 856-8197 <a href="http://burgerking.com">burgerking.com</a>	*	*		24	23
<b>Cee Nokou Cafe, Wind River Casino</b> 180 Red Wolf Pl. • (800) 657-1004 <a href="http://windriverhotelcasino.com">windriverhotelcasino.com</a>	*			28.9	33

(Restaurants in Lander Continued)					
	Sit Down Restaurant	Fast Food	Capacity	Distance to Site (Miles)	Approximate Travel Time By Car (Minutes)
<b>El Sol De Mexico</b> 453 Main St. • (307) 332-9298	*			50.5	53
<b>Gannett Grill</b> 126 Main St. • (307) 332-8228 <a href="http://landrivetac.com">landrivetac.com</a>	*			50.2	53
<b>Lander Bake Shop</b> 259 Main St. • (307) 436-4305 <a href="http://landerbakeshop.com">landerbakeshop.com</a>	*			50.3	53
<b>Lincoln Street Bakery</b> 223 Lincoln St. • (307) 335-5362 <a href="http://lincolnstreetbakery.com">lincolnstreetbakery.com</a>	*			50.4	53
<b>Liquid Courage Sports Bar &amp; Grill</b> 592 Main St. Suite 1 • (307) 438-1073	*			50.7	55
<b>MaMaw's Kitchen</b> 260 Grandview Dr. • (307) 332-3123	*			50.1	53
<b>Maverick</b> 808 Main St. • (307) 332-2100 <a href="http://frontierfoodgetallander.com">frontierfoodgetallander.com</a>	*			50.9	52
<b>McDonald's</b> 235 McFarlane Dr. • (307) 332-3955 <a href="http://mcdonalds.com">mcdonalds.com</a>	*	*		50	52
<b>Middle Fork</b> 351 Main St. • (307) 335-5005 <a href="http://themiddleforklander.com">themiddleforklander.com</a>	*			50.4	52
<b>Mulino Italian Bistro</b> 129 Main St. • (307) 436-4016 <a href="http://mulinoitalianbistro.com">mulinoitalianbistro.com</a>	*			50.2	52
<b>The Oxbow</b> 170 E. Main St. • (307) 332-0233	*			50	52
<b>Pizza Hut</b> 607 E. Main St. • (307) 332-0224 <a href="http://pizzahut.com">pizzahut.com</a>	*	*		50.4	52
<b>Rachel's Bar &amp; Grill</b> 1 Golf Course Dr. • (307) 332-4653	*			50.4	53

(Restaurants in Riverton Continued)					
	Sit Down Restaurant	Fast Food	Capacity	Distance to Site (Miles)	Approximate Travel Time By Car (Minutes)
<b>Chopetix Asian Bistro</b> 824 N. Federal Blvd. • (307) 856-2028 <a href="http://chopetixasianbistro.com">chopetixasianbistro.com</a>	*			24.8	25
<b>The Cove Restaurant</b> 301 E. Main St. • (307) 856-9813	*			25.7	27
<b>Dairy Queen</b> 819 N. Federal Blvd. • (307) 857-3042 <a href="http://dairyqueen.com">dairyqueen.com</a>	*	*		24.8	26
<b>Daylight Donuts</b> 622 E. Main St. • (307) 856-0440	*	*		25.5	27
<b>The Depot</b> 110 S. First St. • (307) 856-2221 <a href="http://thedepotriverton.com">thedepotriverton.com</a>	*			25.9	28
<b>Domino's Pizza</b> 1188 W. Main St. • (307) 857-2033 <a href="http://dominos.com">dominos.com</a>	*	*		24.8	26
<b>El Sol De Mexico</b> 711 E. Main St. • (307) 856-0201	*			25.4	27
<b>KFC</b> 830 N. Federal Blvd. • (307) 856-2661 <a href="http://kfc.com">kfc.com</a>	*	*		24.7	25
<b>Little Caesars</b> 1104 N. Federal Blvd. • (307) 856-6128 <a href="http://litlecaesars.com">litlecaesars.com</a>	*	*		24.5	25
<b>McDonald's</b> 813 N. Federal Blvd. • (307) 856-5088 <a href="http://mcdonalds.com">mcdonalds.com</a>	*	*		24.8	25
<b>More Burgers and Shakes</b> 122 S. 2nd St. • (307) 463-0344 <a href="http://moreburgersandshakes.com">moreburgersandshakes.com</a>	*	*		25.8	28
<b>Mt. Everest Nepalese and Indian Bistro</b> 1616 N. Federal Blvd. • (307) 856-5799 <a href="http://mteverestbistro.com">mteverestbistro.com</a>	*			24.2	23
<b>Oriental Palace</b> 202 S. 3rd St. • (307) 856-8003 <a href="http://orientalpalacewy.com">orientalpalacewy.com</a>	*			25.8	24

(Restaurants in Riverton Continued)	Sit Down Restaurant	Fast Food	Capacity	Distance to Site (Miles)	Approximate Travel Time By Car (Minutes)
<b>Perrett's</b> 519 W. Main St. • (307) 857-7300 <a href="http://perretspizza.com">perretspizza.com</a>	*			26.2	29
<b>Pizza Hut</b> 215 N. Federal Blvd. • (307) 856-2806 <a href="http://pizzahut.com">pizzahut.com</a>	*	*		25.2	26
<b>Phil's Dog Shak</b> 7th and Main St. • (307) 851-2894		*		25.4	24
<b>QT's Restaurant, Holiday Inn</b> 900 E. Sunset Dr. • (307) 856-8100	*			24.8	25
<b>Red Willow Restaurant, Wind River Casino</b> 180 Red Wolf Pl. • (866) 857-1904 • (307) 855-2005 <a href="http://windriverhotelfcasinocom">windriverhotelfcasinocom</a>	*			28.9	33
<b>Riverton Country Club</b> 4275 Country Club Dr. • (307) 856-6771 <a href="http://rivertoncountryclub.com">rivertoncountryclub.com</a>	*			29.2	35
<b>Roasted Bean &amp; Cuisine</b> 514 W. Main St. • (307) 856-6448 <a href="http://roastedbeanandcuisine.com">roastedbeanandcuisine.com</a>	*			26.2	29
<b>Rusty Truck</b> 400 N. Federal Blvd. • (307) 463-2826 <a href="http://rustytruckwy.com">rustytruckwy.com</a>	*			25.1	26
<b>Speedway Cafe</b> 815 S. Federal Blvd. • (307) 857-6743 <a href="http://gouthballey.com">gouthballey.com</a>	*			25.9	28
<b>Subway</b> 900 W. Main St. • (307) 856-6370 <a href="http://subway.com">subway.com</a>	*	*		26.5	30
<b>Subway, Walmart</b> 1733 N. Federal Blvd. • (307) 856-7272 <a href="http://subway.com">subway.com</a>	*	*		24.2	24
<b>Sweet Surprises</b> 221A E. Main St. • (307) 463-0650	*			26.7	28
<b>Taco Bell</b> 1812 N. Federal Blvd. • (307) 856-7443 <a href="http://tacobell.com">tacobell.com</a>	*	*		24.2	24

(Restaurants in Thermopolis Continued)	Sit Down Restaurant	Fast Food	Capacity	Distance to Site (Miles)	Approximate Travel Time By Car (Minutes)
<b>Champs Chicken</b> 167 Hwy. 20 S. • (307) 864-3108 <a href="http://champschicken.com">champschicken.com</a>		*		34.6	36
<b>Dairyland &amp; Hot City Coffee</b> 510 Park St. • (307) 864-2757 <a href="http://dairylandhotcitycoffee.com">dairylandhotcitycoffee.com</a>		*		36.4	41
<b>Los Cabos Restaurant</b> 942 Shoshoni St. • (307) 864-3202	*			35.2	39
<b>McDonald's</b> 611 Shoshoni St. • (307) 864-2323 • <a href="http://mcdonalds.com">mcdonalds.com</a>	*	*		35.5	39
<b>Nature's Corner &amp; Crow Bar</b> 530 Broadway St. • (307) 864-3218	*			36.4	40
<b>One Eyed Buffalo Brewing Company</b> 528 Broadway St. • (307) 864-3550 <a href="http://oneeyedbuffalobrewingwy.com">oneeyedbuffalobrewingwy.com</a>	*			36.4	40
<b>Pizza Hut</b> 545 Shoshoni St. • (307) 864-2345 <a href="http://pizzahut.com">pizzahut.com</a>	*	*		35.5	39
<b>P6 Station</b> 544 Park St. • (307) 864-3066		*		36.4	40
<b>Safari Club Restaurant &amp; Lounge</b> 115 Park St. • (307) 864-3131 <a href="http://thermopolis.safariclub.com">thermopolis.safariclub.com</a>	*			37	43
<b>Shorty's Liquors/Forks and Corks Catering</b> 103 E. Broadway St. • (307) 864-3541				36.6	41
<b>Storyteller and Jackrabbit Java</b> 524 Broadway St. • (307) 864-3272 <a href="http://storytellerwy.com">storytellerwy.com</a>	*			36.1	40
<b>Taco John's</b> 407 Park St. • (307) 864-2262 <a href="http://tacojohns.com">tacojohns.com</a>	*	*		36.5	40
<b>Total Number of Restaurants: 97</b>					

(Restaurants in Riverton Continued)	Sit Down Restaurant	Fast Food	Capacity	Distance to Site (Miles)	Approximate Travel Time By Car (Minutes)
<b>Taco John's</b> 623 W. Main St. • (307) 856-9549 <a href="http://tacojohns.com">tacojohns.com</a>	*	*		26.5	29
<b>Thai Chef 2</b> 712 Fremont Ave. • (307) 463-0376	*			25.3	26
<b>Trailhead Restaurant</b> 831 N. Federal Blvd. • (307) 856-7990	*			24.8	25
<b>Wendy's</b> 1800 N. Federal Blvd. • (307) 856-6538 <a href="http://wendys.com">wendys.com</a>	*	*		24.1	24
<b>Restaurants - Shoshoni, WY 82649 - Total Number of Restaurants: 3 - Size of Shoshoni: 3.58 mi<sup>2</sup></b>					
<b>Fast Lane</b> 110 W. 2nd St. • (307) 876-2221		*		4	3.7
<b>Get Hooked</b> 12 Boyson Marina Rd. • (307) 876-2772 <a href="http://boysonmarinasuppgroundrestaurant.com">boysonmarinasuppgroundrestaurant.com</a>	*			17.8	20
<b>Shoshoni Senior Center</b> 214 E. 2nd St. • (307) 876-2703 <a href="http://shoshonisrcenter.com">shoshonisrcenter.com</a>	*			3.9	5
<b>Restaurants - Thermopolis, WY 82443 - Total Number of Restaurants: 16 - Size of Thermopolis: 2.5 mi<sup>2</sup></b>					
<b>7 Lazy S Café &amp; Bar</b> 100 S. 6th St. • (307) 864-2500 <a href="http://7lazycafesandbar.com">7lazycafesandbar.com</a>	*			36	39
<b>148 Bistro</b> 148 E. Anapahoe St. • (307) 864-2116	*			36.8	43
<b>Bangkok Thai</b> 512 Broadway St. • (307) 864-3565 <a href="http://bangkokthaibusiness.com">bangkokthaibusiness.com</a>	*			36.1	40
<b>Black Bear Café</b> 111 N. 5th St. • (307) 864-3221 <a href="http://blackbear-cafe.business.com">blackbear-cafe.business.com</a>	*			36.2	40

Amenities - Dubois, WY 82513	Distance to Site (Miles)	Approximate Travel Time By Car (Minutes)
<b>Antelope Hills Golf Course</b> 126 Clubhouse Dr. • (307) 455-2698 • <a href="http://duboisgolfclub.com">duboisgolfclub.com</a> Located between the Absaroka and Wind River Mountain ranges, Antelope Hills Golf Course lies in the Wind River Valley at 7,000 feet.	101	94
<b>Dinwoody Petroglyph Site</b> 900 W. Rams Horn St. • (307) 455-2284 • <a href="http://frontcountymuseums.com/dubois">frontcountymuseums.com/dubois</a> The stunning petroglyphs of Torrey and Dinwoody basins can be viewed by contacting the Dubois Museum.	99.2	92
<b>Dubois Fish Hatchery</b> 5 Fish Hatchery Ct. • (307) 455-2431 <a href="http://right.wyo.gov/About/OurOfficesandFacilities/DuboisFishHatchery">right.wyo.gov/About/OurOfficesandFacilities/DuboisFishHatchery</a> A state of the art high production facility utilizing a partial reuse recirculation system on a limited water supply.	96	88
<b>Dubois Museum</b> 900 W. Rams Horn St. • (307) 455-2284 • <a href="http://frontcountymuseums.com/dubois">frontcountymuseums.com/dubois</a> The Dubois Museum collects, preserves and interprets artifacts and other materials, including those of geologic importance, beginning with the Proterozoic Eon and extending through the end of the timber industry in the 1980s.	99.2	92
<b>Dubois Scenic Overlook</b> McKinley Drive • (307) 455-2345 • <a href="http://townofdubois.org/files/files/2012/02/Dubois-Scenic-Overlook-27">townofdubois.org/files/files/2012/02/Dubois-Scenic-Overlook-27</a> At the summit, view all three mountain-building processes: volcanic, tectonic and glacial!	101	94
<b>National Bighorn Sheep Center</b> 10 Bighorn Lane • (307) 455-429 • <a href="http://bighorn.org">bighorn.org</a> This interpretive center educates the public about bighorn sheep and conservation of wild lands.	99.1	92
<b>National Museum of Military Vehicles</b> 6410 US Hwy. 26 • (307) 455-3802 • <a href="http://nmv.org">nmv.org</a> Inside the 160,000 square foot museum, visitors will find nearly 500 fully restored military vehicles, artillery pieces, naval vessels and aircraft dating from 1897 to the present with a current emphasis on the American experience in World War II, the Korean War and the Vietnam War.	88.9	81
<b>Tie Hack Memorial</b> 12 Miles NW of Dubois - The Memorial honors the men who cut railroad ties out of Wyoming forests and loaded them down flumes and rivers for the Wyoming Tie and Timber Company, under contract with the Chicago and North Western Railroad.	116	108
<b>Togwotee Pass (Wyoming Centennial Scenic Byway)</b> A high mountain pass at an elevation of 9,650 feet above sea level.	128	122
<b>Torrey Lake Petroglyph District</b> The stunning petroglyphs of Torrey and Dinwoody basins can be viewed by contacting the Dubois Museum.	99.5	97

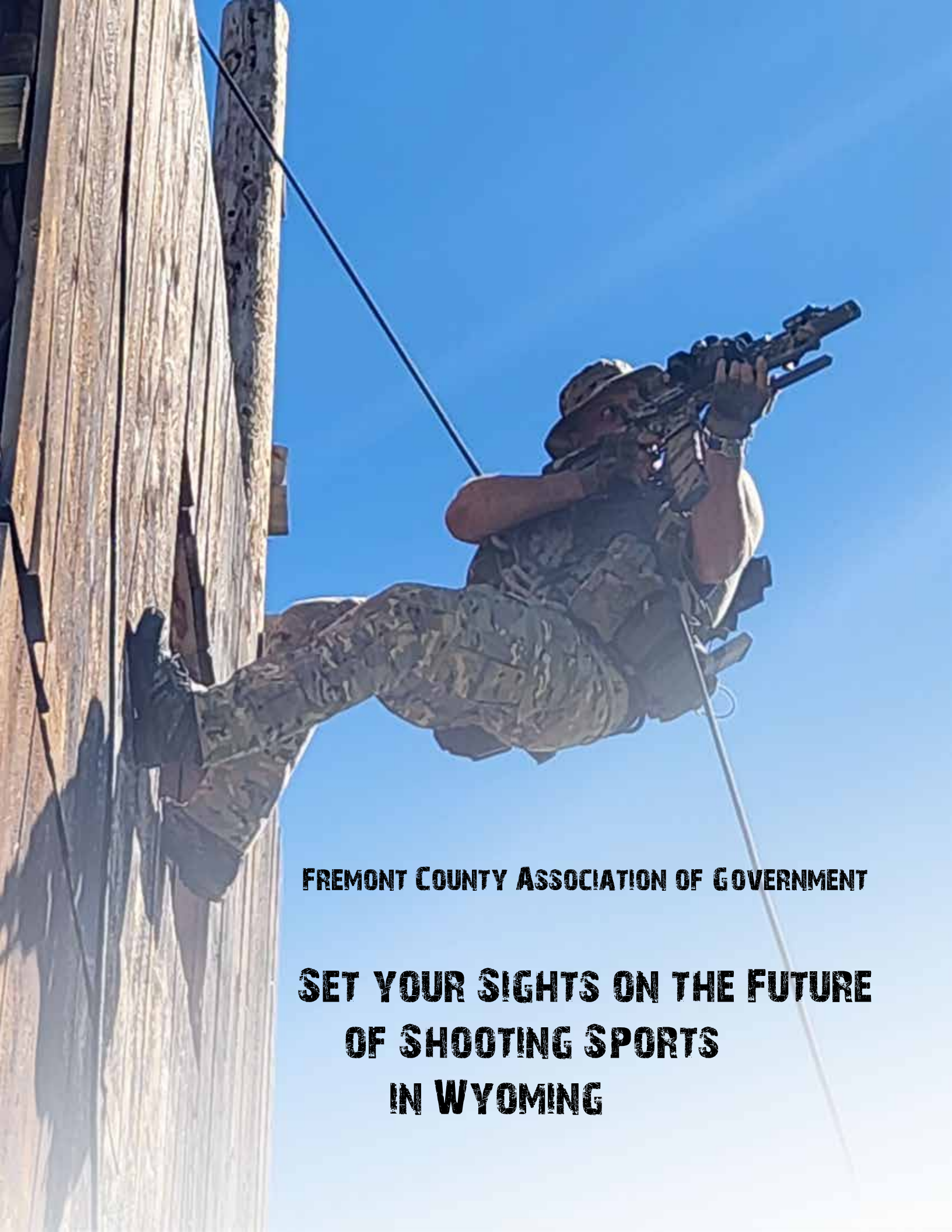
# Area Amenities & Points of Interest (CONT)

Amenities - Lander, WY 82520		
	Distance to Site (Miles)	Approximate Travel Time By Car (Minutes)
<b>Fremont County Pioneer Museum</b> 1443 W. Main St. • (307) 455-3339 • <a href="http://www.fremontcountypioneermuseum.com/the-lander-museum">fremontcountypioneermuseum.com/the-lander-museum</a> The Museum collects, preserves and interprets artifacts from exploratory through the 1920s.	51.6	56
<b>Johnny Behind the Rocks Trail System</b> 6401 US-267 • <a href="http://www.wy.gov/programs/recreation/mountainbiking/johnny-behind-the-rocks">www.wy.gov/programs/recreation/mountainbiking/johnny-behind-the-rocks</a> This trail system provides mountain bikers with routes that climb to and traverse long and scenic ridges.	63	64
<b>Lander Golf Course</b> 1 Golf Course Dr. • (307) 465-4653 • <a href="http://www.landergolfcourse.com">landergolfcourse.com</a> At 5,000 feet, Lander Golf Course has high-reaching peaks that create a dramatic backdrop with wildlife as an audience.	50.8	53
<b>Popo Agie Falls</b> This moderate three-mile round trip hike reaches a cascade of waterfalls in the Shoshone National Forest.	61.1	60
<b>Red Canyon</b> US-26, 24 miles south of Lander on Highway 26, Red Canyon is one of the most scenic vistas in Wyoming.	66.4	67
<b>Sinks Canyon State Park</b> 3079 Sinks Canyon Rd. • (307) 332-6333 • <a href="http://www.wyo.gov/index.php?page=to-go/sinks-canyon">wyo.gov/index.php?page=to-go/sinks-canyon</a> A public recreation and nature preservation area located in the Wind River Mountains, six miles southwest of Lander on Highway 131.	68.4	64
Amenities - Riverton, WY 82501		
<b>1838 Mountain Man Rendezvous Site</b> E. Monroe Ave. • (307) 861-4457 • <a href="http://1838rendezvous.com">1838rendezvous.com</a> The site is at the confluence of the Wind River and Popo Agie (now Little Wind) rivers and was used for the 1839 and 1838 Rendezvous, as well as Captain Bonneville's camp in the summer of 1836.	27	31
<b>Castle Gardens Petroglyph Site</b> The Castle Gardens Petroglyph Site is a six-mile by one-mile region of vertical cliff faces with extensive petroglyph images incised in the rock faces.	44.9	50
<b>Riverton Art Banner Project</b> A philanthropic group dedicated to beautifying Riverton and surrounds with larger than life-sized art.	25.3	26
<b>Riverton Country Club</b> 4275 Country Club Dr. • (307) 856-4779 • <a href="http://rivertoncountryclub.net">rivertoncountryclub.net</a> Riverton Country Club combines a great golf experience with the unmatched beauty of the Wyoming landscape.	29.2	35
<b>Riverton Museum</b> 700 E. Park Ave. • (307) 856-2665 • <a href="http://www.townofrivertonmuseums.com">townofrivertonmuseums.com</a> The Riverton Museum collects, preserves and interprets artifacts that have a direct association with Riverton history, western Fremont County communities, the Eastern Shoshone peoples, the Northern Arapaho peoples and regional history as it relates to Fremont County.	25.2	26

(Amenities in the Wind River Indian Reservation Continued)		
	Distance to Site (Miles)	Approximate Travel Time By Car (Minutes)
<b>St. Stephens Indian Mission &amp; Heritage Center</b> 33 St. Stephens Rd., St. Stephens • (307) 856-7906 • <a href="http://facebook.com/SSIMinc">facebook.com/SSIMinc</a> Founded in the late 1800s, St. Stephens Indian Mission holds mass and services and is worth a visit, especially as the church is painted with colorful Native American designs.	29.7	33
<b>Wind River Wild Horse Sanctuary</b> 8616 US-267, Lander • (307) 438-3838 • <a href="http://facebook.com/SSIMinc">facebook.com/SSIMinc</a> The Sanctuary has displays on the history and importance of wild horses in Native American culture.	53.1	55
Amenities - Shoshoni, WY 82649		
<b>Boysen Reservoir</b> US-26 about 20 miles north from Riverton • <a href="http://mrecreation.gov/camping/getaways/7230">mrecreation.gov/camping/getaways/7230</a> Boysen Reservoir is a reservoir formed by Boysen Dam.	18	20
<b>Boysen State Park</b> US-26 about 20 miles north from Riverton • (307) 856-2796 <a href="http://www.wyo.gov/index.php?page=to-go/boysen">wyo.gov/index.php?page=to-go/boysen</a> Boysen State Park juxtaposes fascinating desert with hundreds of acres of blue water, creating a surreal landscape for boaters, anglers and bird watchers.	16.8	18
<b>Castle Gardens Petroglyph Site</b> The Castle Gardens Petroglyph Site is a six-mile by one-mile region of vertical cliff faces with extensive petroglyph images incised in the rock faces.	44.0	60
<b>Wyoming Heritage Trail</b> The Wyoming Heritage Trail, also known as Rails to Trails, is a path that spans 22 miles from Railroad Avenue at South 3rd Street in Riverton to East 1st Street near US 26/20/East in Shoshoni.	16.4	33
Amenities - South Pass City and Atlantic City, WY 82520		
<b>California National Historic Trail</b> A mid-19th century highway for human movement to lanes of gold and farmland in California.	82.1	84
<b>Miner's Delight</b> BLM Road 2324, Ft. Starnbaugh Loop Road, Atlantic City A "sister city" of Atlantic City and South Pass City.	82.1	84
<b>Mormon National Historic Trail</b> The 1,300-mile route from Illinois to Utah on which Mormon pioneers traveled from 1846 to 1847.	82.1	84
<b>Oregon National Historic Trail</b> A 2,170-mile east-west, large wheeled wagon route and migrant trail that connected the Missouri River to valleys in Oregon.	82.1	84
<b>South Pass City State Historic Site (Carissa Mine, English Tunnels)</b> 125 S. Pass Main St., South Pass City • (307) 332-3684 • <a href="http://southpassco.wy.gov">southpassco.wy.gov</a> An old gold mining town with more than 40 original structures and thousands of artifacts original to South Pass.	82.1	84

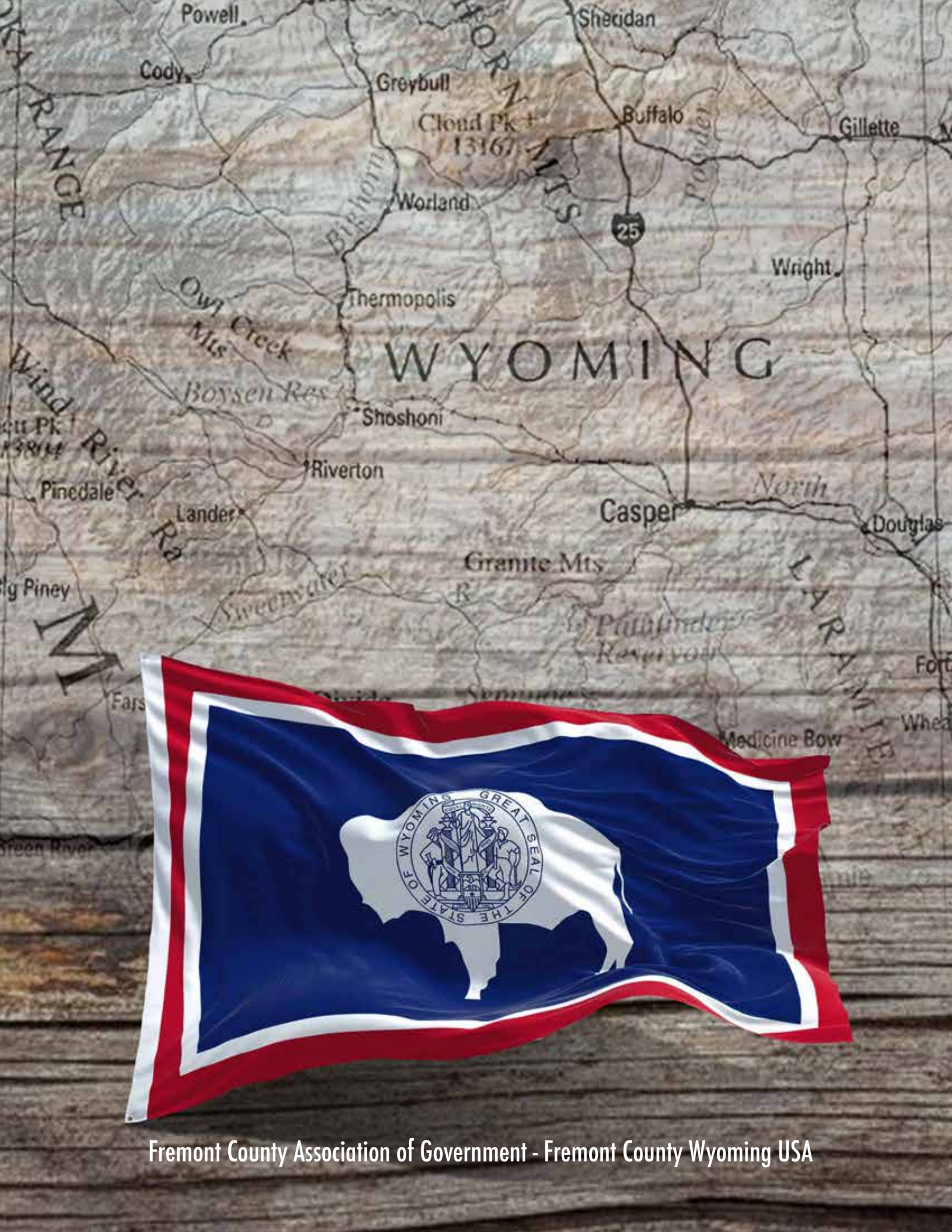
(Amenities in Riverton Continued)		
	Distance to Site (Miles)	Approximate Travel Time By Car (Minutes)
<b>Wind River Heritage Center</b> 1075 S. Federal Blvd. • (307) 856-0706 • <a href="http://www.windriverheritagecenter.com">windriverheritagecenter.com</a> The Center aims to entertain and educate visitors through a museum of wax figures, full body animal mounts, trap collections, antique saddles, 1900s-era farm equipment, a trapper's cabin, snowshoe collections and Western artwork.	26.2	28
<b>Wyoming Heritage Trail</b> The Wyoming Heritage Trail, also known as Rails to Trails, is a path that spans 22 miles from Railroad Avenue at South 3rd Street in Riverton to East 1st Street near US 26/20/East in Shoshoni.	29.5	36
Amenities - Wind River Indian Reservation		
<b>Chief Washakie's Gravesite</b> 54 N. Fork Rd. #39, Fort Washakie Washakie was a prominent leader of the Shoshone people during the mid-19th century.	57.2	59
<b>Crowheart Butte</b> Crowheart Butte was the site of a battle between the Crow and Shoshone tribes in 1864.	66.2	72
<b>Wind River Tribal Buffalo Initiative</b> U.S. Highway 26, between mile markers 108 and 109 south of Pilot Butte Reservoir. <a href="http://easternshoshone.org/buffalo-enclosure-program">easternshoshone.org/buffalo-enclosure-program</a> Founded by Jason Bixler in early 2022 to be a local entity providing reconnection to buffalo.	66.8	58
<b>Eastern Shoshone Tribal Cultural Center</b> 90 Ethete Rd., Fort Washakie • (307) 332-3177 • <a href="http://easternshoshone.org/cultural-center">easternshoshone.org/cultural-center</a> Learn about Shoshone culture and history, including Chief Washakie and Sacajawea.	57.9	61
<b>Northern Arapaho Experience Culture Room</b> 183 Red Wolf Place, Riverton • (307) 856-2064 • <a href="http://www.northernarapaho.com">www.northernarapaho.com</a> A cultural treasure of Arapaho artifacts and artwork.	27.3	30
<b>Path of Honor - Wind River Veterans Memorial</b> 1 Ethete Rd., Fort Washakie • (307) 335-7330 • <a href="http://www.veteransmemorial.org">www.veteransmemorial.org</a> A tribute to all military service members and Veterans who live within the boundaries of the Wind River Indian Reservation.	55.7	56
<b>Roberts Shoshone Episcopal Mission</b> 189 Trout Creek Rd., Fort Washakie This simple frame church built in 1885 by Reverend John Roberts, is the oldest building now located at the Shoshone Episcopal Mission Complex.	57.8	50
<b>Sacajawea's Gravesite</b> Fort Washakie One of the most famous women in American history, Sacajawea guided Lewis and Clark as they made their voyage across North America.	58.4	50
<b>St. Michael's Mission</b> Ethete An Episcopal church mission established around 1887 to minister to the Arapaho and Shoshone of the Wind River Indian Reservation.	50.2	48

(Amenities in South Pass/Atlantic City Continued)		
	Distance to Site (Miles)	Approximate Travel Time By Car (Minutes)
<b>Steamboat Mountain Buffalo Jump</b> Located in the Red Desert near Faron on the rim of the Great Divide Basin. At an elevation of 8,693 feet, Steamboat Mountain is the location of a buffalo jump used by the early plains hunters.	144	185
<b>Willie's Handcart Monument</b> A historical marker near South Pass City.	62.8	61
<b>Absaroka Mountain Range</b> A subrange of the Rocky Mountains.	128	122
<b>Continental Divide National Scenic Trail</b> A National Scenic Trail with a length of 3,028 miles between Mexico and Canada.	58	64
<b>Owl Creek Mountains</b> A subrange of the Rocky Mountains. They run east to west to form a bridge between the Absaroka Range to the northwest and the Bridger Mountains to the east.	48.1	81
<b>Wind River Mountain Range</b> A remote, 100-mile mountain chain containing spectacular glacial peaks and basins.	56	55
Amenities - Thermopoli, WY 82443		
<b>Hot Springs Mineral Swimming Pools</b> Located in Hot Springs State Park, these pools are a great place to swim, slide or relax in warm mineral water. Helie's TapPools • (307) 864-9250, the Star Plunge • (307) 854-3771, and the State Operated Bath House (307) 864-3765.	37.2	43
<b>Hot Springs State Park</b> Located on the north edge of town, Wyoming's oldest State Park is filled with hot mineral pools, mineral fountains and picnic shelters.	37.2	43
<b>Legend Rock Petroglyph Site</b> 27 miles northwest of Thermopoli are petroglyphs dating from 500 AD to the 10th century.	65.2	74
<b>The Wyoming Dinosaur Center</b> 110 Center Ranch Rd. • (307) 864-2097 • <a href="http://www.wyomingdinosaurcenter.org">wyomingdinosaurcenter.org</a> A world-class dinosaur museum featuring interpretive displays, life-size dinosaur mounts and a preparation lab observation area. (307) 864-2907.	37.2	43
<b>Thermopoli Golf Course</b> 143 Airport Rd., Thermopoli • (307) 864-5294 • <a href="http://thermopoligolf.com">thermopoligolf.com</a> Nine holes reside atop the hills to the north.	37.4	45
<b>Wind River Canyon</b> This high walled canyon has remarkable geological displays of layers of dated earth.	25.4	26



**FREMONT COUNTY ASSOCIATION OF GOVERNMENT**

**SET YOUR SIGHTS ON THE FUTURE  
OF SHOOTING SPORTS  
IN WYOMING**



Fremont County Association of Government - Fremont County Wyoming USA