

Wyoming Pipeline Corridor Initiative



**JOINT MINERALS, BUSINESS & ECONOMIC
DEVELOPMENT COMMITTEE**

**Interim Committee Meeting
Laramie, Wyoming
May 10, 2024**



**Enhanced Oil
Recovery Institute**

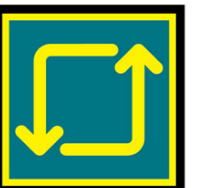
**Lon Whitman – Director
Brian Jeffries – EORI Commercial Pipeline Advisor**

www.eoriwyoming.org

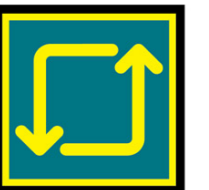
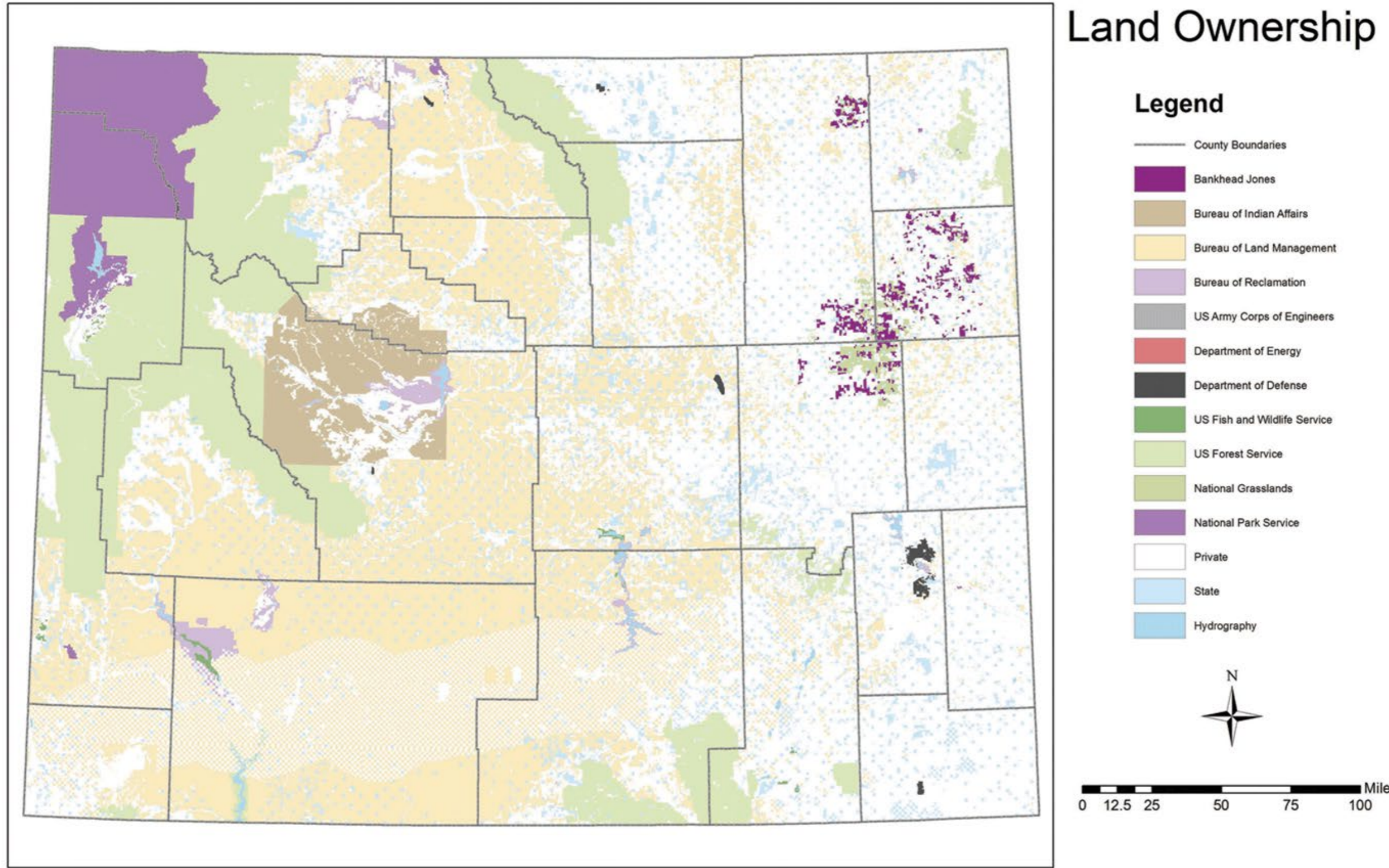
Why was WPCI Created?

“The WPCI would result in a system of corridors that are integrated with the BLM’s existing corridor network for the construction of pipelines for the transport of CO2 and EOR products and for other compatible uses on federal lands throughout the State of Wyoming”

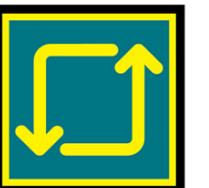
- To create a rational integrated set of pipeline corridors to support EOR with CO2
- BLM field offices had planned corridors independently of each other resulting in mismatched alignments
- Some existing corridors were “used up”
- To reduce the hurdle and cost that any one future project having to carry the burden of reconciling these deficiencies
- To develop a rational set of corridors to link potential sources of CO2 with fields that are candidates for Enhanced Oil Recovery (EOR)with CO2
- Support the future production of crude oil in Wyoming by facilitating EOR projects



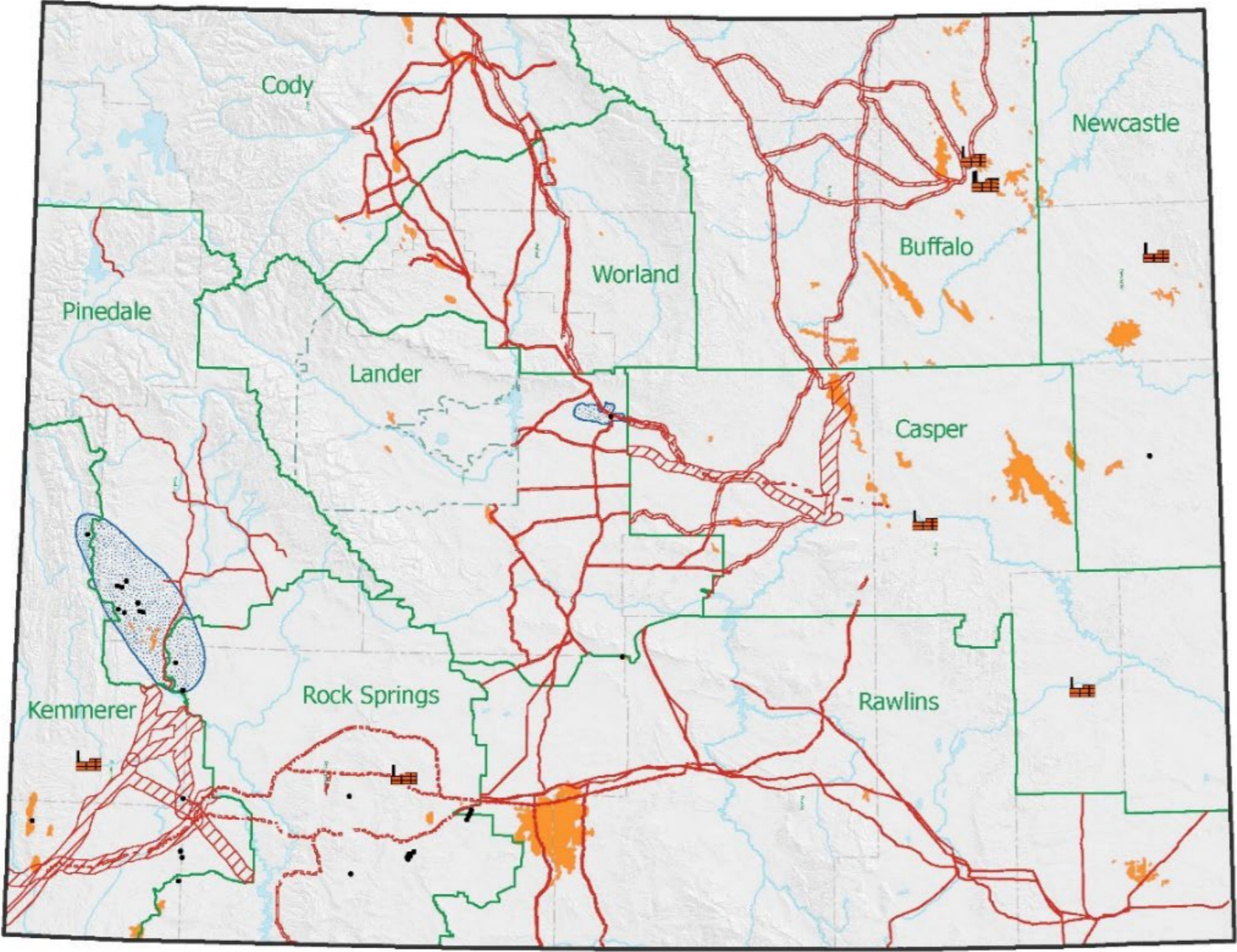
Why was WPCI Created?



Nine of Ten BLM Field Offices Involved



Corridors in Individual Field Offices Already Existed

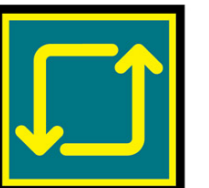
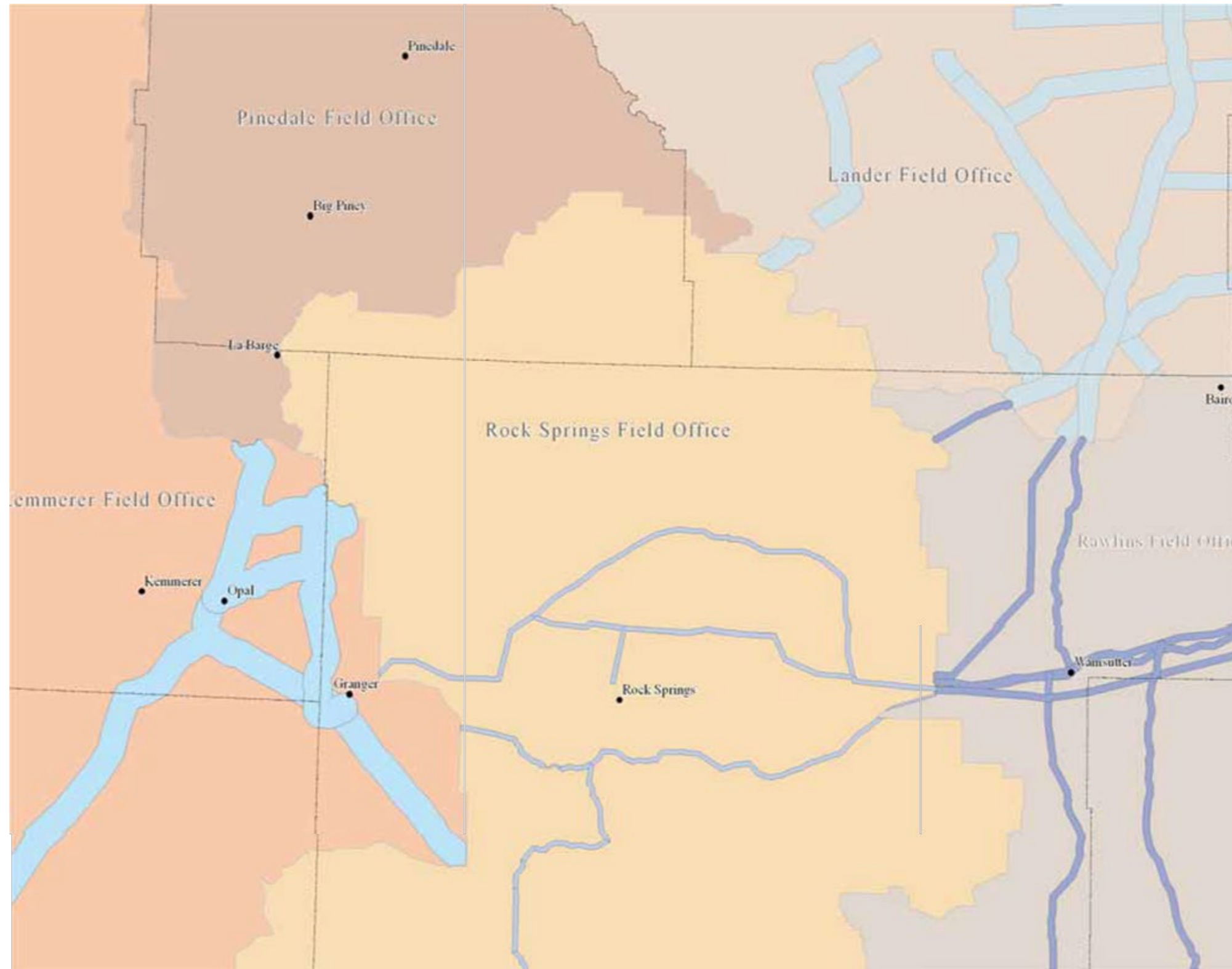


Existing corridors were not developed in concert and without EOR with CO2 in mind

● CO2 Producing Wells ■ Power Plants □ BLM Field Offices ▨ BLM Energy Corridors ■ CO2 Producing Fields ■ Fields Suitable for CO2 Flooding

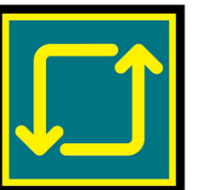


Example of What Existed in SW Wyoming (corridors shaded)

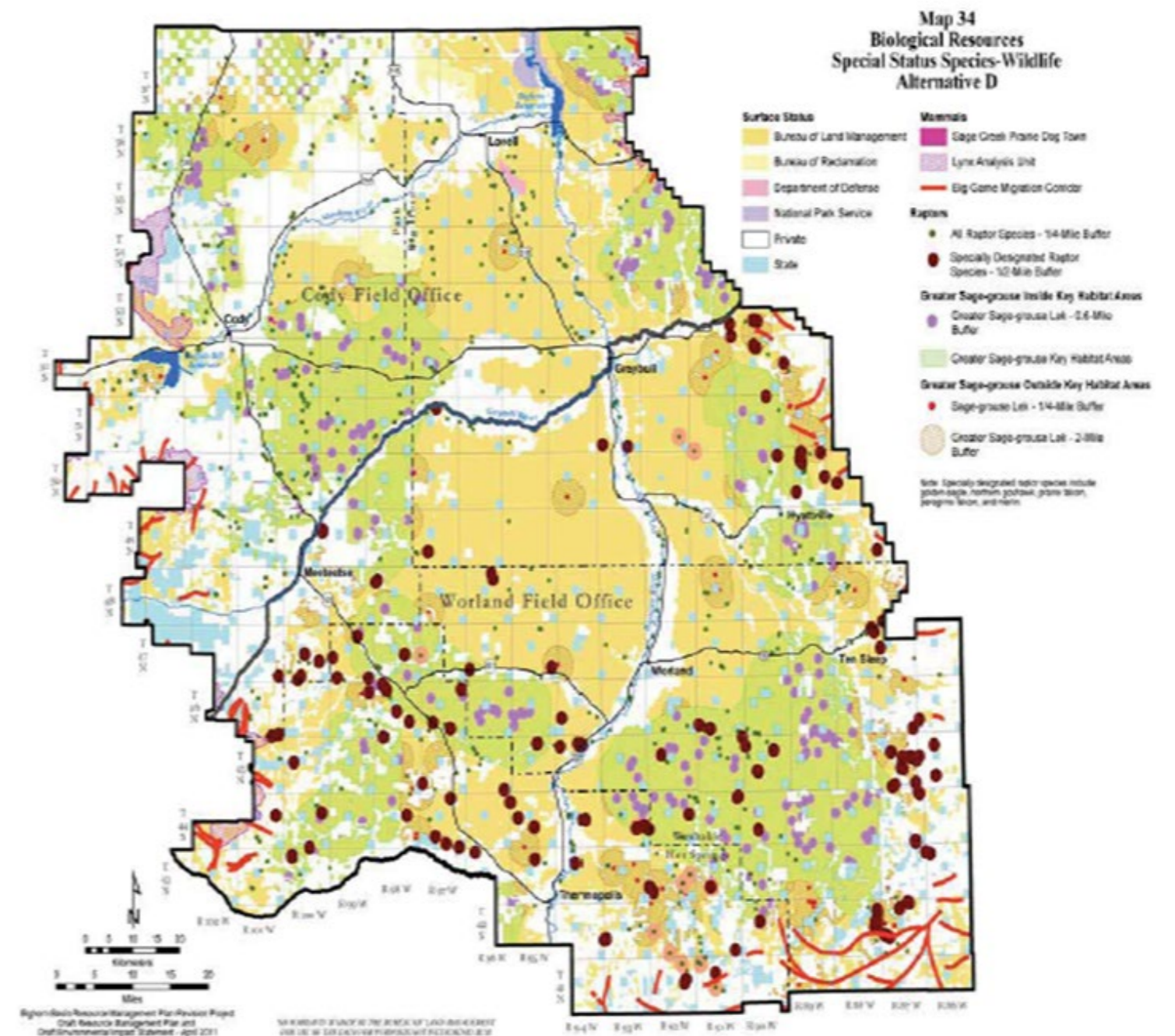
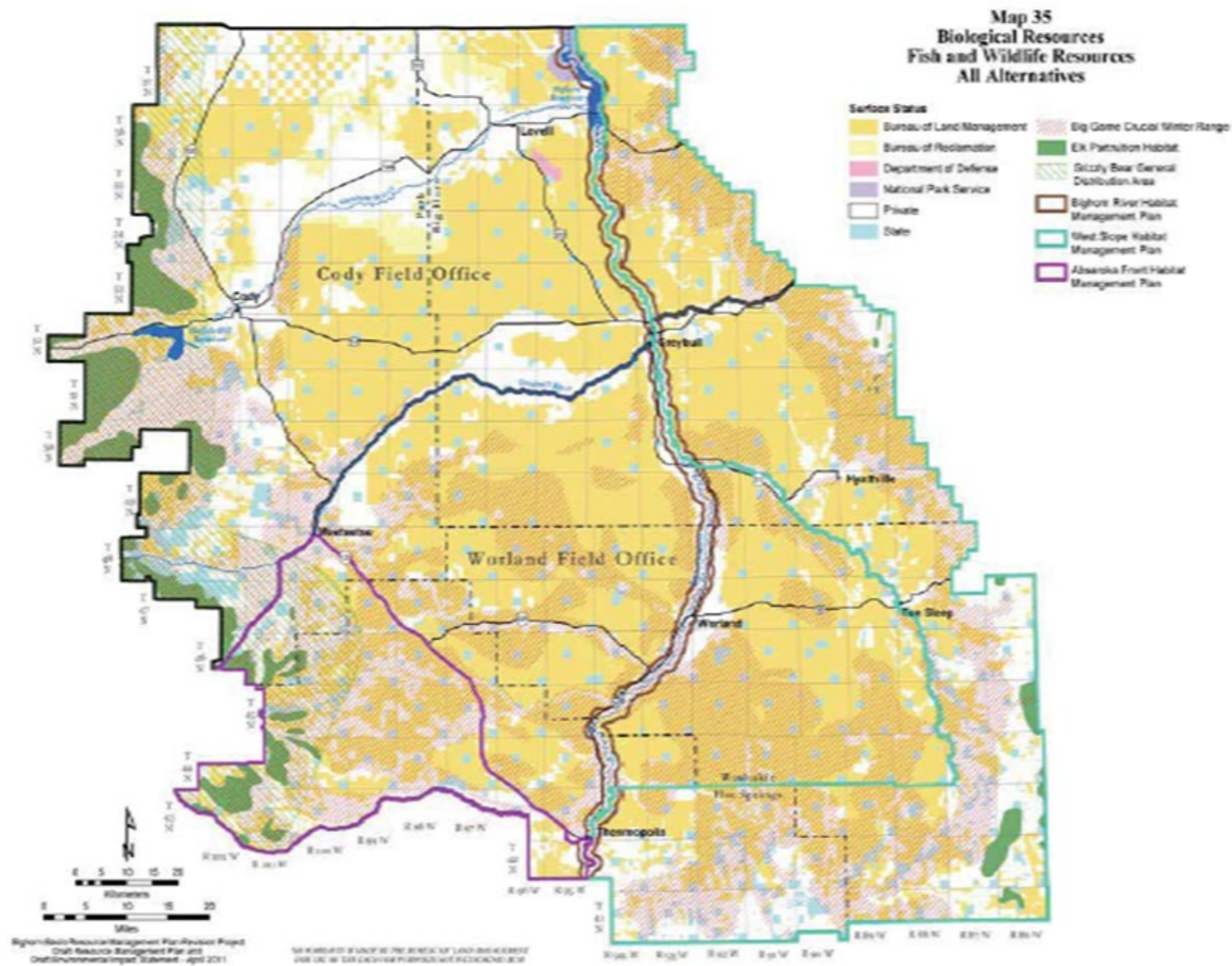


How was WPCI Created?

- A Plan of Development was created (initial routes suggested)
- Routes modified to account for conflicts (cultural, scenic, tribal, conservation, etc.)
- Professional planning and environmental consultants retained to prepare the resource reports
- Negotiate process with BLM
- Hired consultants to prepare the Environmental Impact Statements

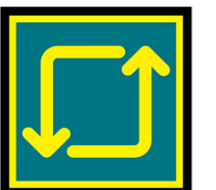


Things That Were Considered

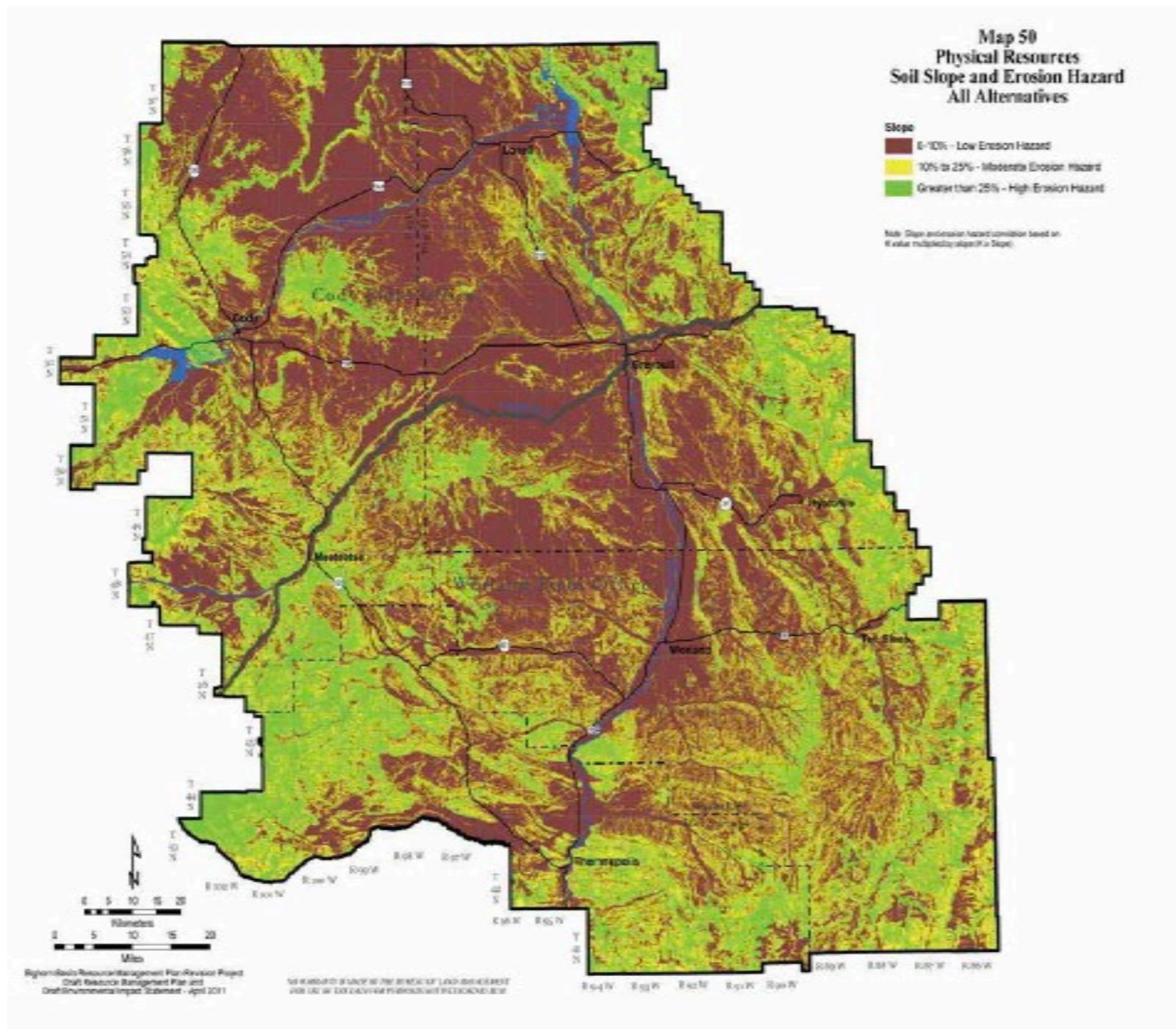


Fish and Wildlife Resources

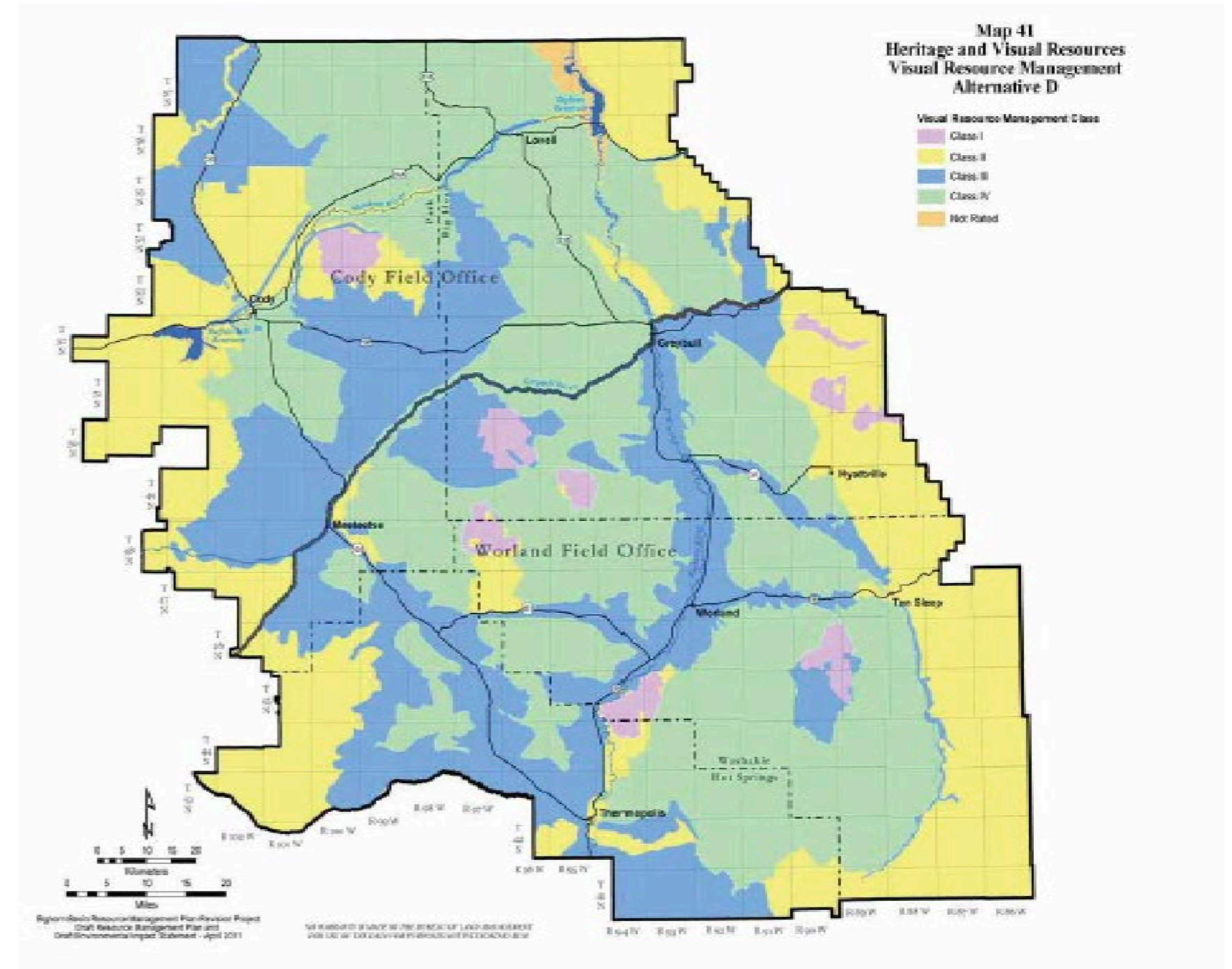
Special Status Species



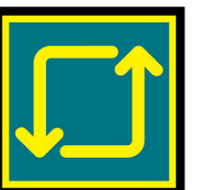
Things That Were Considered



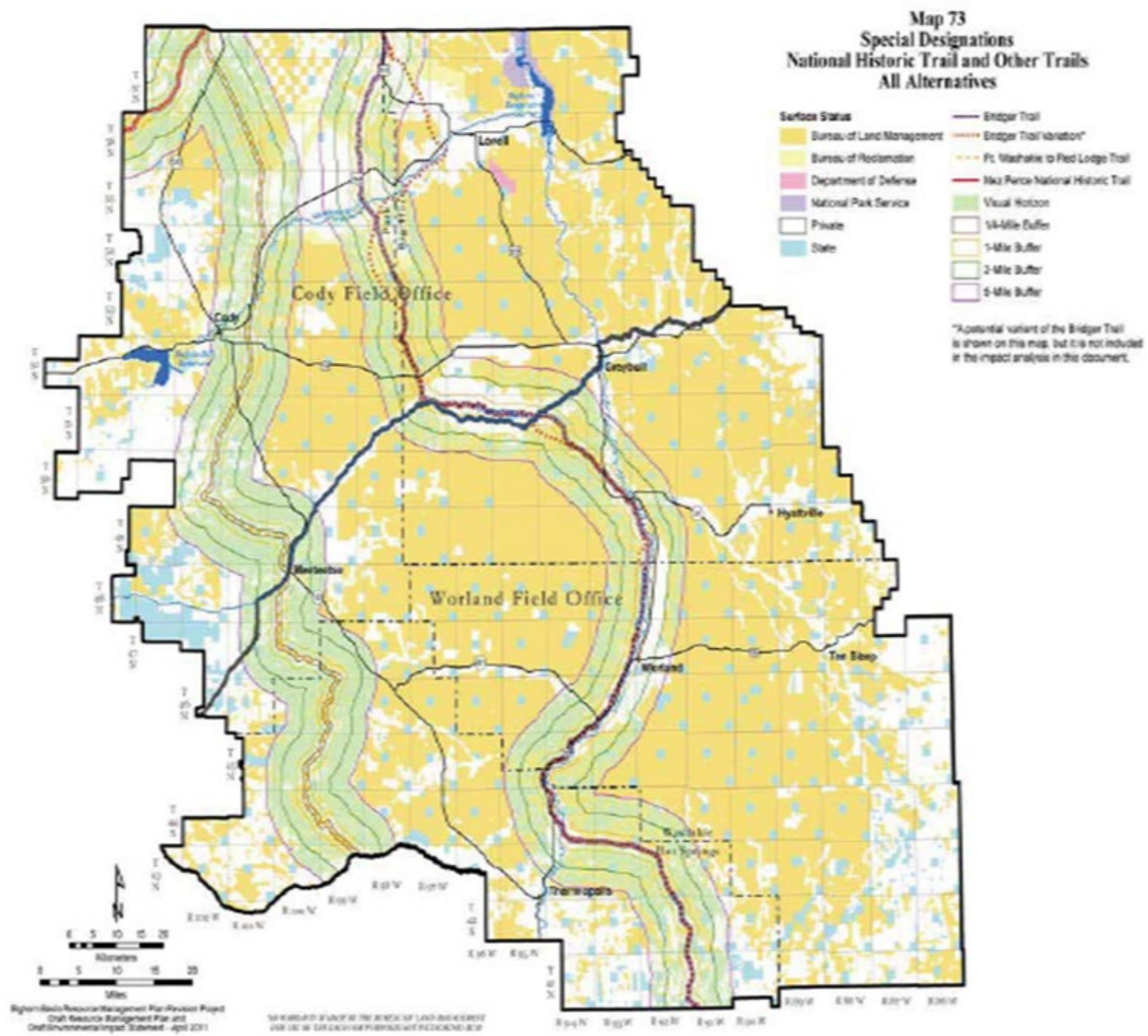
Soil Slope and Erosion Hazard



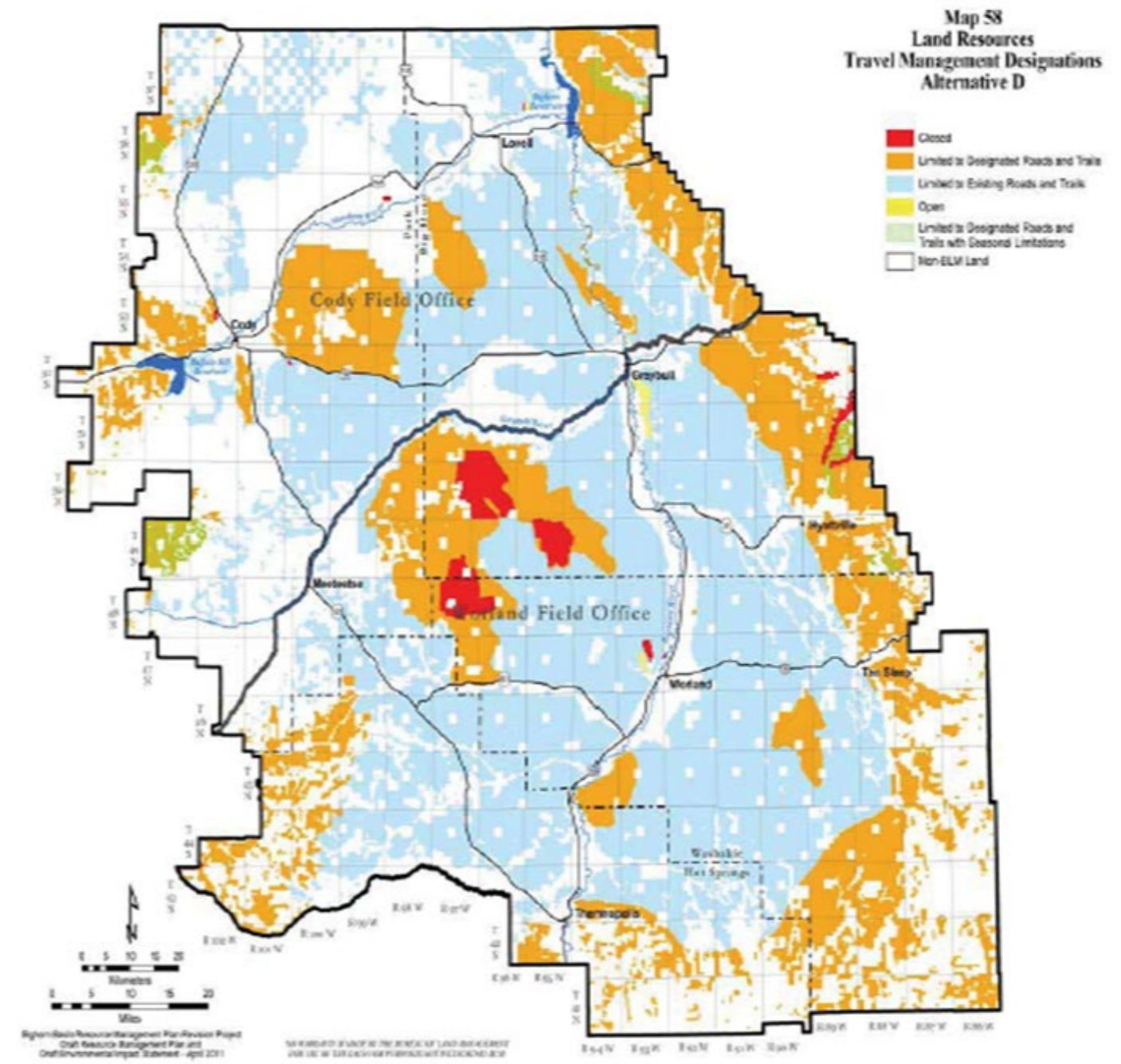
Heritage and Visual Resources



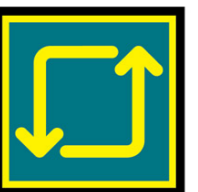
Things That Were Considered



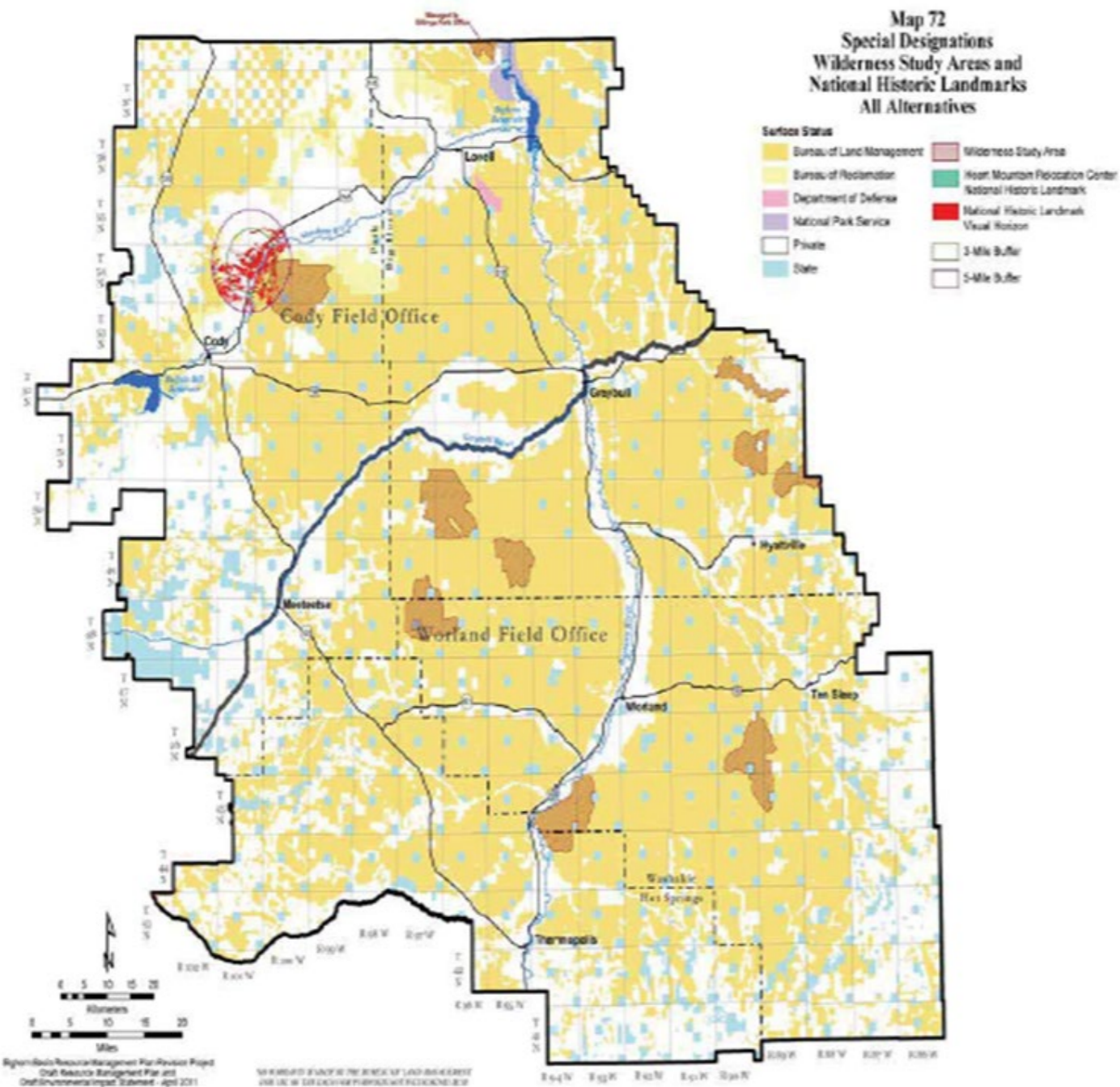
National Historic Trails



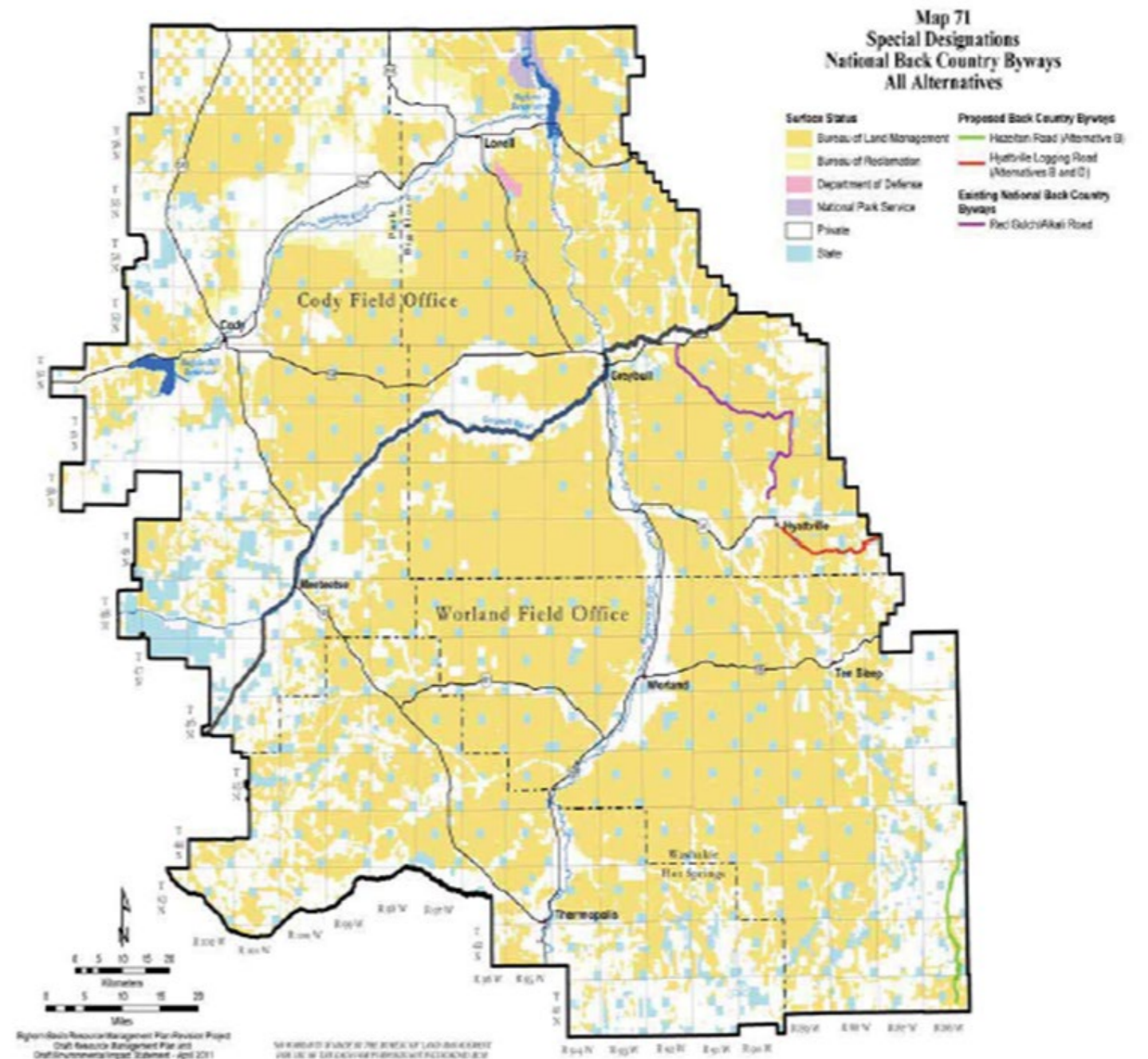
Travel Management Designations



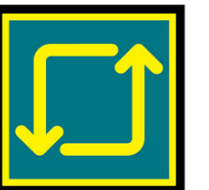
Things That Were Considered



Wilderness Study Areas

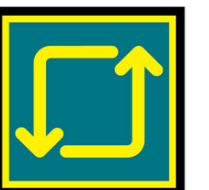


Back Country Byways

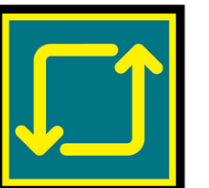
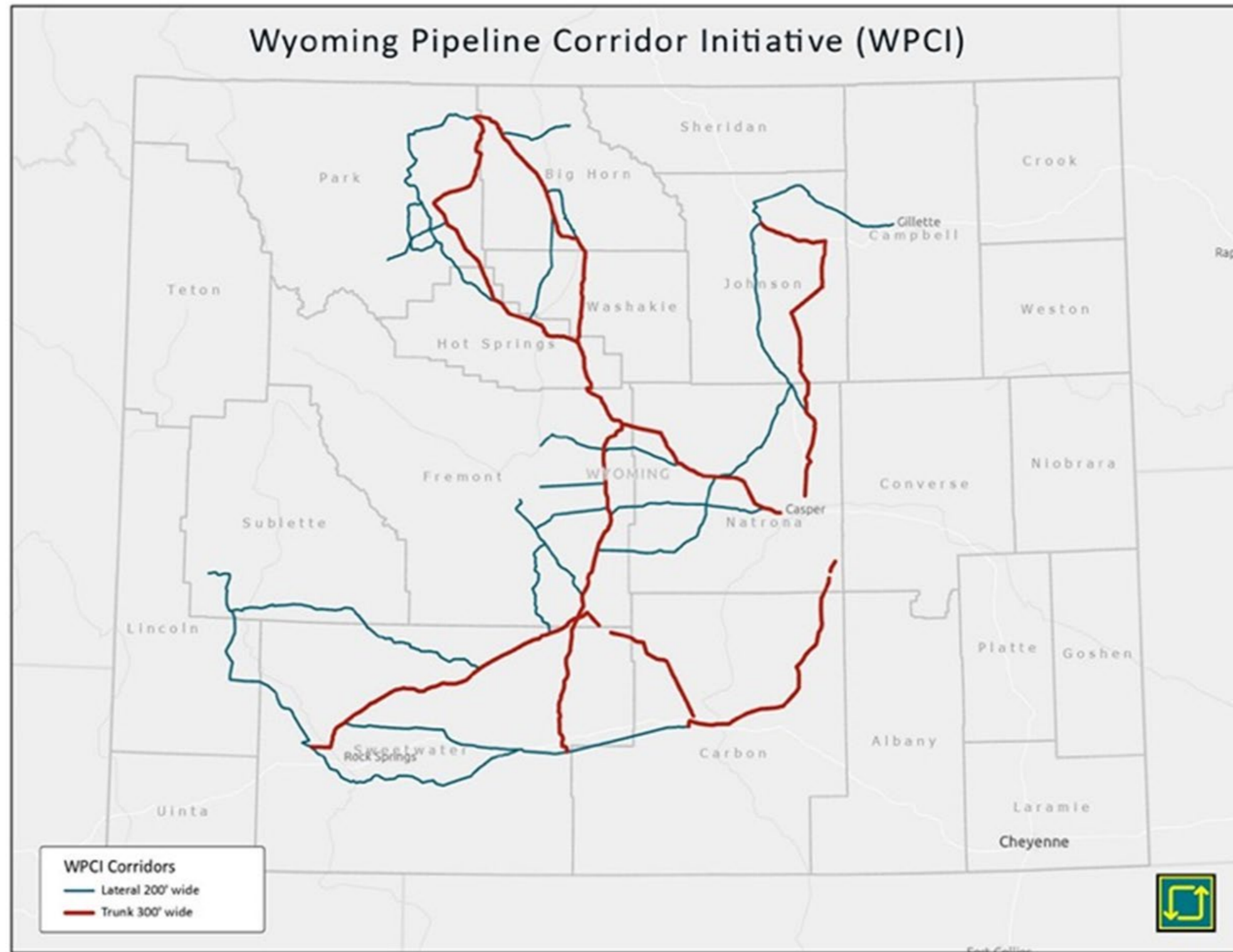


Timeline

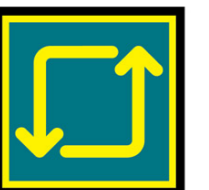
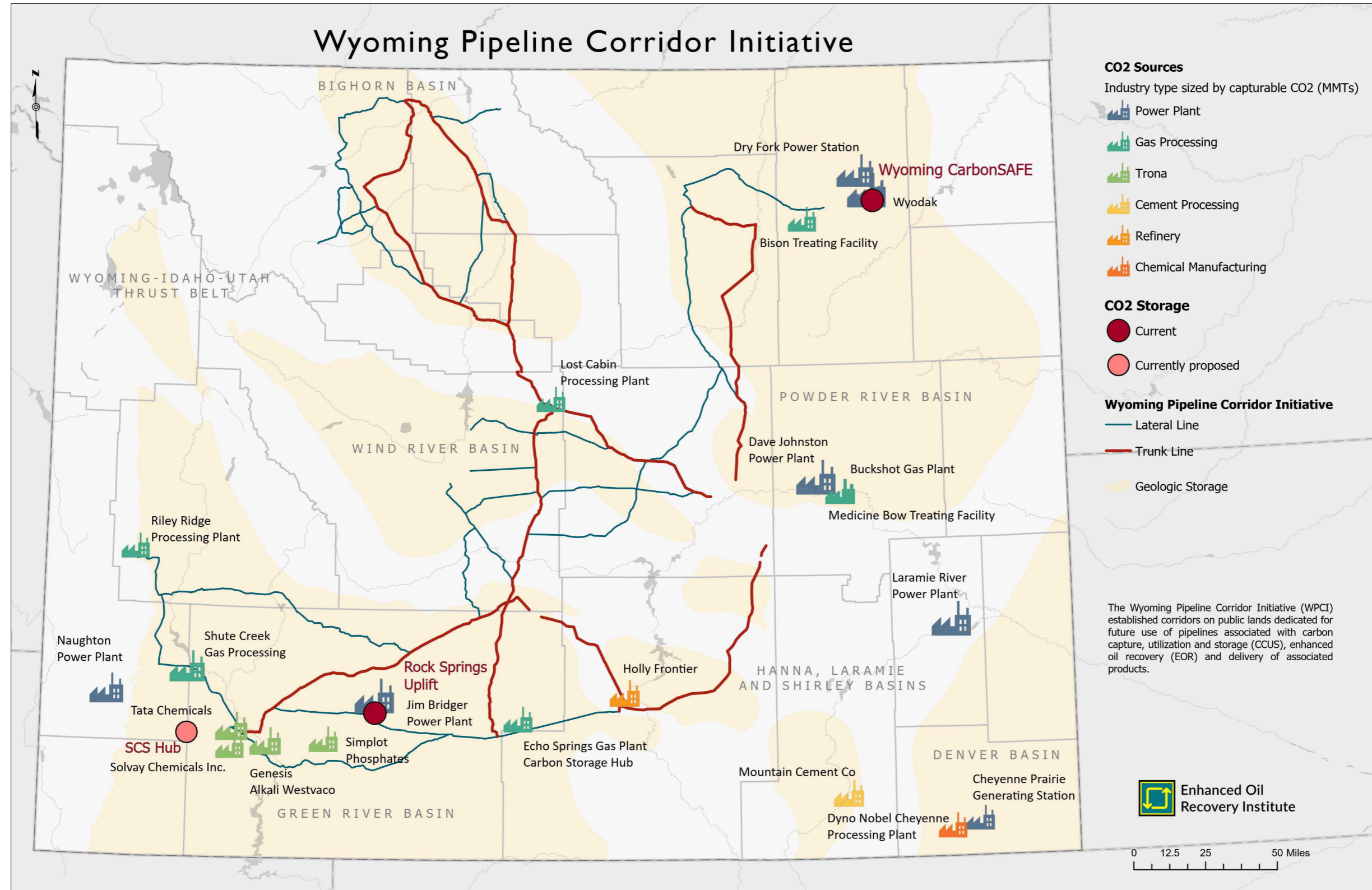
- Project began in 2012 following a \$2 MM appropriation from Legislature (HB0121)
- The BLM conducted the public outreach/comment process under NEPA
- Eight years later –success in January 2020 – Record of Decision
- Corridors became part of individual field office Resource Management Plans



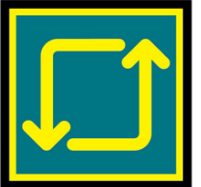
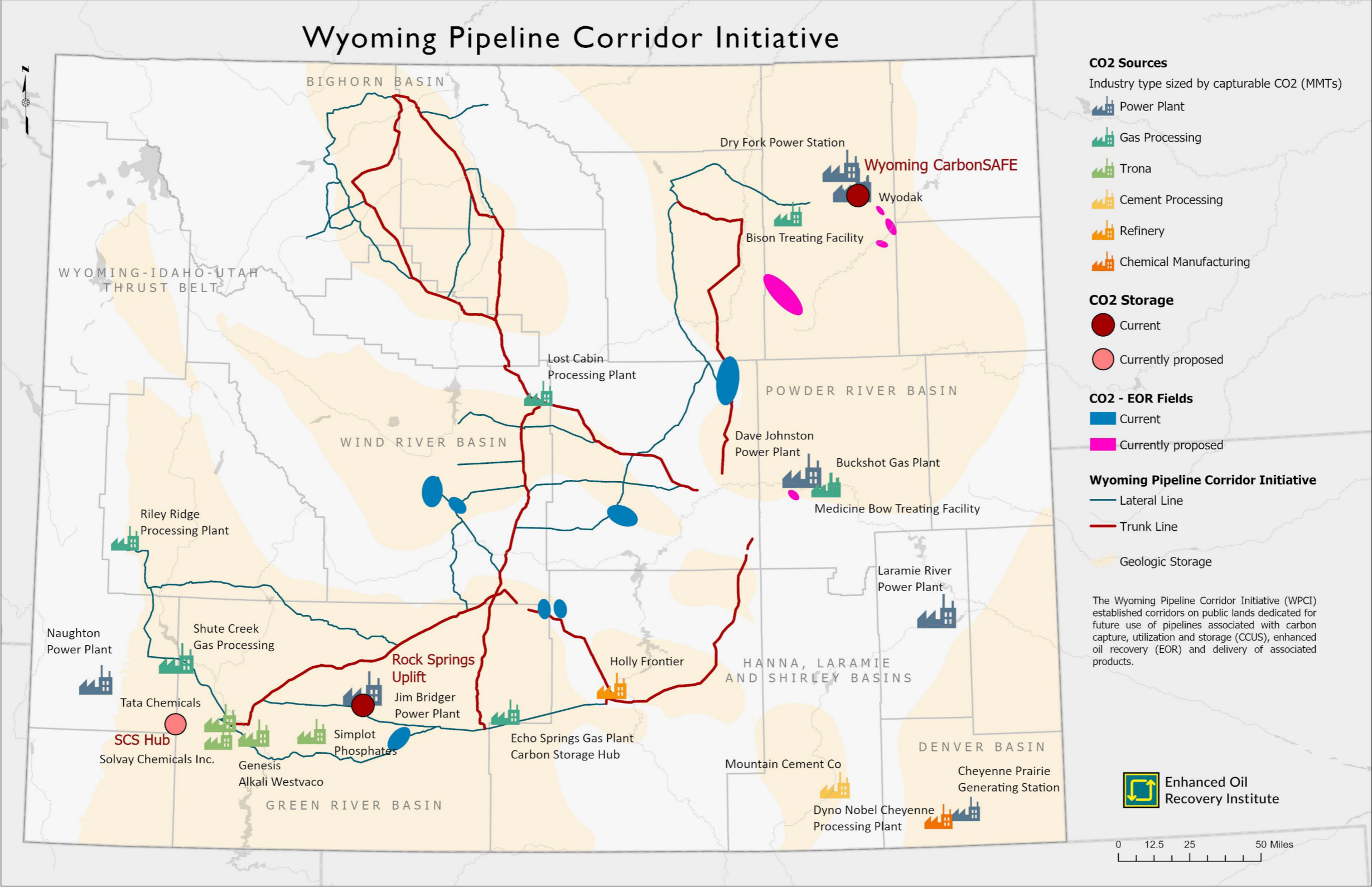
Where is WPCI?



CO₂ Sources – Current and Potential



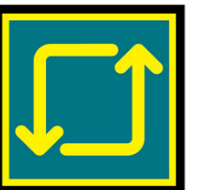
Existing and Potential CO₂ – EOR Projects



How Can WPCI be Used?

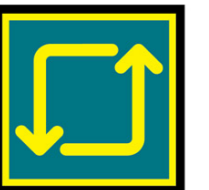
Features/Benefits/Limitations

- A CO2 pipeline project can align itself with these corridors by selecting a path across BLM land that can more readily navigate that project's specific NEPA process
- Reduces project planning and permitting costs
- Individual projects still have to acquire a project-specific grant and undergo an individual NEPA process
- Existence does not imply all corridors will be used
- Corridors are wide enough to accommodate more than one pipeline – supports “co-locating” infrastructure
- Corridor space is available on a “first come” basis. No mechanism that sets a corridor aside for any specific entity
- Wyoming Trails Carbon Hub (WyoTCH pronounced “Watch”) project to create a pipeline roadmap for Wyoming using WPCI results in that evaluation
- Corridors also available for broadband infrastructure





Questions?





Lon Whitman

Director

307-315-6441

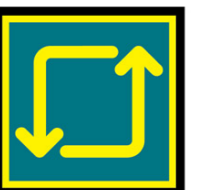
lon.whitman@uwyo.edu

Lon Whitman

Mr. Whitman has a degree in Petroleum Engineering from the University of Wyoming and over 30 years of experience in the oil and gas industry. His professional career includes both offshore and onshore experience in reservoir engineering and business development. He has an extensive background in enhanced oil recovery principles and technologies and has worked for nearly 10 years as a private consultant in EOR and IOR projects in Wyoming, Texas, and North Dakota. Mr. Whitman also has professional experience in environmental due diligence as a consultant for oil and gas acquisitions and divestitures. He has worked with EORI since 2007 and has been Director since April 2022.

Education

B.S., Petroleum Engineering, University of Wyoming, WY





Brian Jeffries

Commercial Pipeline Advisor

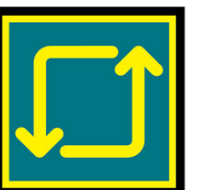
brian.jeffries@uwo.edu

Brian Jeffries

Brian Jeffries has over forty years of experience in the oil and gas industry, predominately in commercial roles in the midstream segment. He most recently served as the Senior Vice President of Marketing and Logistics at Outrigger Energy where he was responsible for planning and executing the disposition of natural gas, natural gas liquids and crude oil from Outrigger's facilities in the Permian Basin and the Rocky Mountain region. Mr. Jeffries also served for twelve years as the Executive Director of the Wyoming Pipeline Authority (WPA). Prior to Outrigger and the WPA, Jeffries held various executive positions with both private and publicly traded midstream and natural gas pipeline companies. Jeffries has a BS in Civil Engineering from the University of Colorado and is a Professional Engineer in Colorado.

Education

B.S., Civil Engineering, University of Colorado, CO





20 Years of Dedicated Service to
the Oil & Gas Industry of Wyoming

**2435 King Blvd, Ste 313
Casper, WY 82604**

THANK YOU

www.eoriwyoming.org