

President
Malcolm Ervin, Platte County Clerk

Vice President
Amanda Hutchinson, Uinta County Clerk

Secretary / Treasurer
Gwynn Bartlett, Carbon County Clerk



PO Box 728, Wheatland, WY 82201

President Phone (307) 322-2315
E-mail: pcclerk@plattecountywyoming.com

Vice President Phone (307) 783-0306
E-mail: amhutchinson@uintacounty.com

Secretary Phone (307) 328-2668
E-mail: gwynnbartlett@carbonwy.com

To: Chairman Ogden Driskell
Chairman Dan Zwonitzer
Members of the Jt. Corporations, Elections and Political Subdivisions
Committee

From: County Clerks' Association of Wyoming

Date: July 19, 2021

Subject: Importance & Advantage of working with Local Stakeholders when
Developing Reapportionment Plans

Thank you for the opportunity to speak with your committee about the incredible importance of working with County Clerks when developing your reapportionment plans. Below are a series of reasons why County Clerks should be closely consulted during reapportionment. We will be happy to go into deeper detail during the August 6, 2021, Jt. Corporations, Elections and Political Subdivisions Committee, if requested.

As you well know, County Clerks are the election administrators and chief election officers of their respective county. As the local election administrator, Clerks have a vital understanding of the geographical challenges of their county. Geographical challenges and features guide a Clerk's recommendation as to how county should be divided into precincts to best represent that community. Reapportioning without Clerk input could lead to splits that will result in "pockets" of voters being marginalized and violate the privacy of their vote.

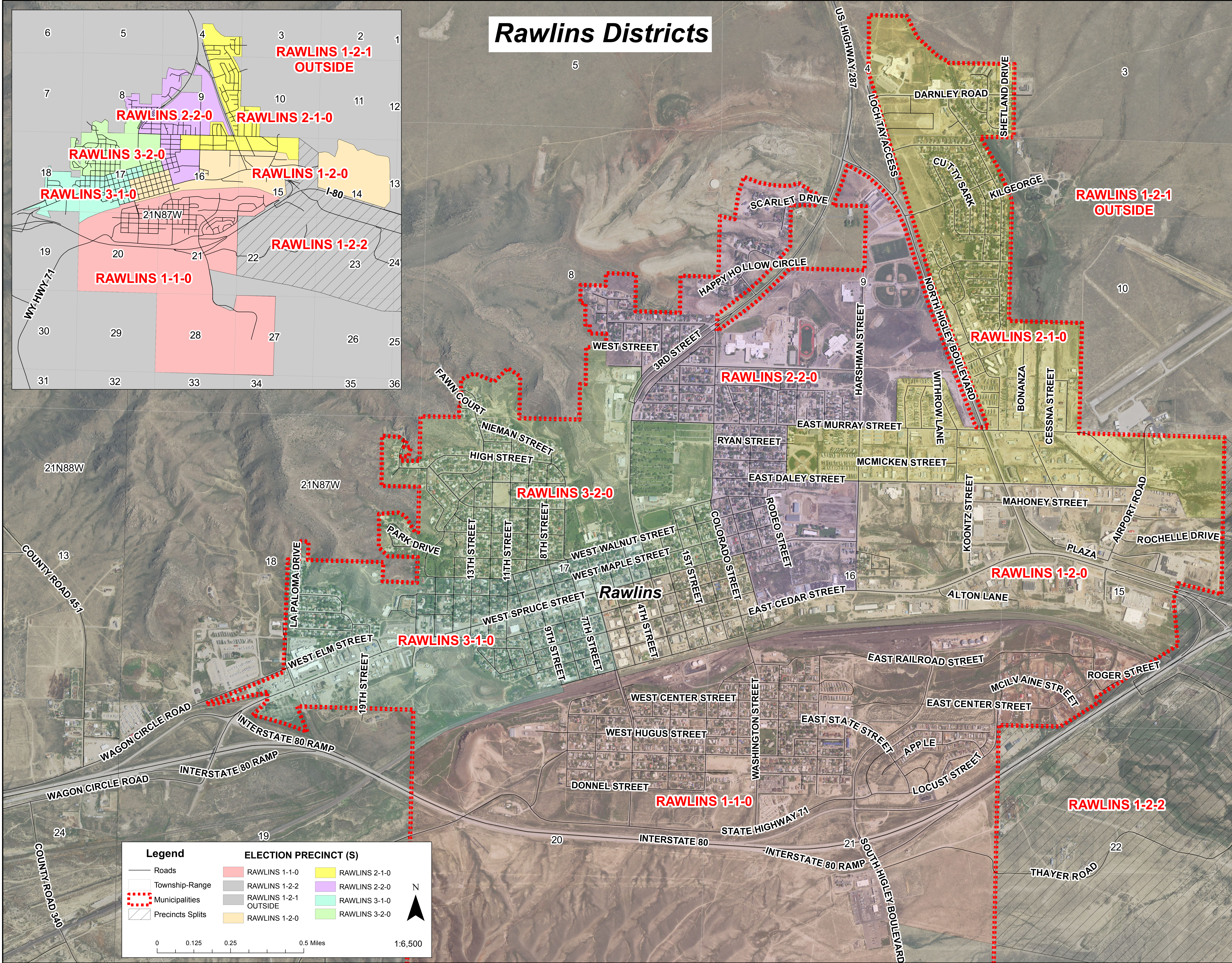
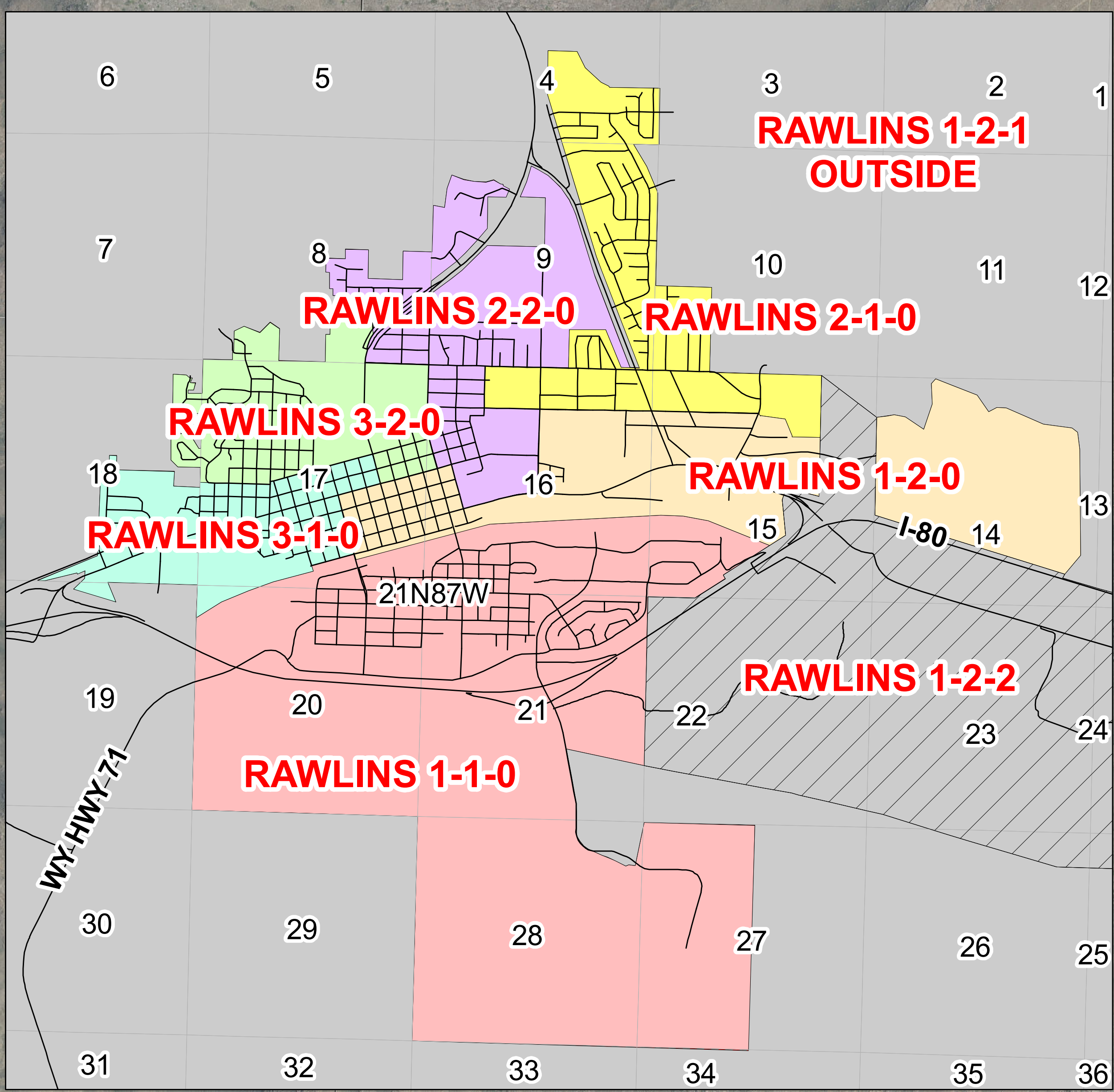
To understand why it is important to limit the number of splits within precincts, it is important to first understand what splits are. When a race encompasses different boundaries than another race in the same voting precinct it creates a split. For example, an entire precinct contains a county commissioner race but only the south half of the precinct gets to vote on the house district race. In addition, the east half of the precinct contains a special district race. As you can see, each time the race does not cover the entire precinct there are splits and with each split comes a different ballot. The more splits – and thereby the more ballots – within a single precinct creates confusion for both the voter and the poll worker. The more ballots one precinct has, the higher likelihood of errors.

We have included a number of exhibits with this memo. Behind this memo you will find a precinct map of the Town of Rawlins, sample ballots from Carbon County and a precinct map of the Town of Wheatland. I will use each of these to explain splits and emphasize the importance of working with County Clerks while working through reapportionment.

A handwritten signature in blue ink, appearing to read 'Malcolm Ervin', is written over the typed name and title.

Malcolm Ervin, President & Platte County Clerk

Rawlins Districts



Legend

Roads	RAWLINS 1-1-0	RAWLINS 2-1-0
Township-Range	RAWLINS 1-2-2	RAWLINS 2-2-0
Municipalities	RAWLINS 1-2-1 OUTSIDE	RAWLINS 3-1-0
Precincts Splits	RAWLINS 1-2-0	RAWLINS 3-2-0

0 0.125 0.25 0.5 Miles

1:6,500

N

OFFICIAL NONPARTISAN PRIMARY ELECTION BALLOT

NONPARTISAN

VOTE BOTH SIDES

**Election Judge
Initials** _____

CARBON COUNTY, AUGUST 16, 2016

01-02-0 (INSIDE RAWLINS HD15)

INSTRUCTIONS TO VOTERS

TO VOTE FOR A PERSON WHOSE NAME IS PRINTED ON THE BALLOT, MARK THE OVAL IMMEDIATELY ADJACENT TO THE NAME OF THE PERSON FOR WHOM YOU DESIRE TO VOTE.

TO VOTE FOR A PERSON WHOSE NAME IS NOT PRINTED ON THE BALLOT, WRITE HIS NAME ON THE BLANK SPACE PROVIDED FOR THAT PURPOSE **AND** MARK THE OVAL IMMEDIATELY ADJACENT TO THE NAME OF THE PERSON.

VOTE LIKE THIS:

NONPARTISAN OFFICES

MUNICIPAL OFFICES

**CITY OF RAWLINS
WARD 1 COUNCILPERSON
FOUR (4) YEAR TERM
VOTE FOR ONE (1)**

WRITE-IN

OFFICIAL PARTISAN PRIMARY ELECTION BALLOT

CONSTITUTION PARTY

VOTE BOTH SIDES

Election Judge Initials _____

CARBON COUNTY, AUGUST 16, 2016

01-02-0 (INSIDE RAWLINS HD15)

INSTRUCTIONS TO VOTERS

TO VOTE FOR A PERSON WHOSE NAME IS PRINTED ON THE BALLOT, MARK THE OVAL IMMEDIATELY ADJACENT TO THE NAME OF THE PERSON FOR WHOM YOU DESIRE TO VOTE.

TO VOTE FOR A PERSON WHOSE NAME IS NOT PRINTED ON THE BALLOT, WRITE HIS NAME ON THE BLANK SPACE PROVIDED FOR THAT PURPOSE AND MARK THE OVAL IMMEDIATELY ADJACENT TO THE NAME OF THE PERSON.

VOTE LIKE THIS: ●

PARTISAN OFFICES

COUNTY OFFICES

FEDERAL OFFICES

CARBON COUNTY COMMISSIONER

FOUR (4) YEAR TERM

VOTE FOR NOT MORE THAN THREE (3)

UNITED STATES REPRESENTATIVE

TWO (2) YEAR TERM

VOTE FOR ONE (1)

WRITE-IN

WRITE-IN

WRITE-IN

DANIEL CLYDE CUMMINGS

WRITE-IN

CARBON COUNTY CLERK OF DISTRICT COURT

UNEXPIRED TERM: TWO (2) YEARS

VOTE FOR NOT MORE THAN ONE (1)

WRITE-IN

STATE OFFICES

PRECINCT OFFICES

HOUSE DISTRICT 15

TWO (2) YEAR TERM

VOTE FOR ONE (1)

WRITE-IN

PRECINCT COMMITTEEMAN

TWO (2) YEAR TERM

VOTE FOR ONE (1)

WRITE-IN

PRECINCT COMMITTEEWOMAN

TWO (2) YEAR TERM

VOTE FOR ONE (1)

WRITE-IN

OFFICIAL PARTISAN PRIMARY ELECTION BALLOT

LIBERTARIAN PARTY

VOTE BOTH SIDES

**Election Judge
Initials** _____

CARBON COUNTY, AUGUST 16, 2016

01-02-0 (INSIDE RAWLINS HD15)

INSTRUCTIONS TO VOTERS

TO VOTE FOR A PERSON WHOSE NAME IS PRINTED ON THE BALLOT, MARK THE OVAL IMMEDIATELY ADJACENT TO THE NAME OF THE PERSON FOR WHOM YOU DESIRE TO VOTE.

TO VOTE FOR A PERSON WHOSE NAME IS NOT PRINTED ON THE BALLOT, WRITE HIS NAME ON THE BLANK SPACE PROVIDED FOR THAT PURPOSE **AND** MARK THE OVAL IMMEDIATELY ADJACENT TO THE NAME OF THE PERSON.

VOTE LIKE THIS:

PARTISAN OFFICES

COUNTY OFFICES

FEDERAL OFFICES

CARBON COUNTY COMMISSIONER
FOUR (4) YEAR TERM
VOTE FOR NOT MORE THAN THREE (3)

UNITED STATES REPRESENTATIVE
TWO (2) YEAR TERM
VOTE FOR ONE (1)

- WRITE-IN
- WRITE-IN
- WRITE-IN

- LAWRENCE GERARD STRUEMPF
- WRITE-IN

CARBON COUNTY CLERK OF DISTRICT COURT
UNEXPIRED TERM: TWO (2) YEARS
VOTE FOR NOT MORE THAN ONE (1)

STATE OFFICES

HOUSE DISTRICT 15
TWO (2) YEAR TERM
VOTE FOR ONE (1)

- WRITE-IN

PRECINCT OFFICES

- WRITE-IN

PRECINCT COMMITTEEMAN
TWO (2) YEAR TERM
VOTE FOR ONE (1)

- WRITE-IN

PRECINCT COMMITTEEWOMAN
TWO (2) YEAR TERM
VOTE FOR ONE (1)

- WRITE-IN

OFFICIAL PARTISAN PRIMARY ELECTION BALLOT

CONSTITUTION PARTY

VOTE BOTH SIDES

Election Judge Initials _____

CARBON COUNTY, AUGUST 16, 2016

01-02-1 (OUTSIDE RAWLINS HD47)

INSTRUCTIONS TO VOTERS

TO VOTE FOR A PERSON WHOSE NAME IS PRINTED ON THE BALLOT, MARK THE OVAL IMMEDIATELY ADJACENT TO THE NAME OF THE PERSON FOR WHOM YOU DESIRE TO VOTE.

TO VOTE FOR A PERSON WHOSE NAME IS NOT PRINTED ON THE BALLOT, WRITE HIS NAME ON THE BLANK SPACE PROVIDED FOR THAT PURPOSE AND MARK THE OVAL IMMEDIATELY ADJACENT TO THE NAME OF THE PERSON.

VOTE LIKE THIS: ●

PARTISAN OFFICES

COUNTY OFFICES

FEDERAL OFFICES

CARBON COUNTY COMMISSIONER

FOUR (4) YEAR TERM

VOTE FOR NOT MORE THAN THREE (3)

UNITED STATES REPRESENTATIVE

TWO (2) YEAR TERM

VOTE FOR ONE (1)

WRITE-IN

WRITE-IN

WRITE-IN

DANIEL CLYDE CUMMINGS

WRITE-IN

CARBON COUNTY CLERK OF DISTRICT COURT

UNEXPIRED TERM: TWO (2) YEARS

VOTE FOR NOT MORE THAN ONE (1)

WRITE-IN

STATE OFFICES

PRECINCT OFFICES

HOUSE DISTRICT 47

TWO (2) YEAR TERM

VOTE FOR ONE (1)

PRECINCT COMMITTEEMAN

TWO (2) YEAR TERM

VOTE FOR ONE (1)

WRITE-IN

WRITE-IN

PRECINCT COMMITTEEWOMAN

TWO (2) YEAR TERM

VOTE FOR ONE (1)

WRITE-IN

OFFICIAL PARTISAN PRIMARY ELECTION BALLOT

LIBERTARIAN PARTY

VOTE BOTH SIDES

**Election Judge
Initials** _____

CARBON COUNTY, AUGUST 16, 2016

01-02-1 (OUTSIDE RAWLINS HD47)

INSTRUCTIONS TO VOTERS

TO VOTE FOR A PERSON WHOSE NAME IS PRINTED ON THE BALLOT, MARK THE OVAL IMMEDIATELY ADJACENT TO THE NAME OF THE PERSON FOR WHOM YOU DESIRE TO VOTE.

TO VOTE FOR A PERSON WHOSE NAME IS NOT PRINTED ON THE BALLOT, WRITE HIS NAME ON THE BLANK SPACE PROVIDED FOR THAT PURPOSE **AND** MARK THE OVAL IMMEDIATELY ADJACENT TO THE NAME OF THE PERSON.

VOTE LIKE THIS:

PARTISAN OFFICES

COUNTY OFFICES

FEDERAL OFFICES

CARBON COUNTY COMMISSIONER
FOUR (4) YEAR TERM
VOTE FOR NOT MORE THAN THREE (3)

UNITED STATES REPRESENTATIVE
TWO (2) YEAR TERM
VOTE FOR ONE (1)

WRITE-IN
 WRITE-IN
 WRITE-IN

LAWRENCE GERARD STRUEMPF
 WRITE-IN

STATE OFFICES

CARBON COUNTY CLERK OF DISTRICT COURT
UNEXPIRED TERM: TWO (2) YEARS
VOTE FOR NOT MORE THAN ONE (1)

HOUSE DISTRICT 47
TWO (2) YEAR TERM
VOTE FOR ONE (1)

WRITE-IN

WRITE-IN

PRECINCT OFFICES

PRECINCT COMMITTEEMAN
TWO (2) YEAR TERM
VOTE FOR ONE (1)

WRITE-IN

PRECINCT COMMITTEEWOMAN
TWO (2) YEAR TERM
VOTE FOR ONE (1)

WRITE-IN

OFFICIAL PARTISAN PRIMARY ELECTION BALLOT

CONSTITUTION PARTY

VOTE BOTH SIDES

Election Judge Initials _____

CARBON COUNTY, AUGUST 16, 2016

01-02-2 (SKYLINE ACRES HD15)

INSTRUCTIONS TO VOTERS

TO VOTE FOR A PERSON WHOSE NAME IS PRINTED ON THE BALLOT, MARK THE OVAL IMMEDIATELY ADJACENT TO THE NAME OF THE PERSON FOR WHOM YOU DESIRE TO VOTE.

TO VOTE FOR A PERSON WHOSE NAME IS NOT PRINTED ON THE BALLOT, WRITE HIS NAME ON THE BLANK SPACE PROVIDED FOR THAT PURPOSE AND MARK THE OVAL IMMEDIATELY ADJACENT TO THE NAME OF THE PERSON.

VOTE LIKE THIS: ●

PARTISAN OFFICES

COUNTY OFFICES

FEDERAL OFFICES

CARBON COUNTY COMMISSIONER
FOUR (4) YEAR TERM
VOTE FOR NOT MORE THAN THREE (3)

UNITED STATES REPRESENTATIVE
TWO (2) YEAR TERM
VOTE FOR ONE (1)

WRITE-IN
 WRITE-IN
 WRITE-IN

DANIEL CLYDE CUMMINGS
 WRITE-IN

CARBON COUNTY CLERK OF DISTRICT COURT
UNEXPIRED TERM: TWO (2) YEARS
VOTE FOR NOT MORE THAN ONE (1)

STATE OFFICES

HOUSE DISTRICT 15
TWO (2) YEAR TERM
VOTE FOR ONE (1)

WRITE-IN

PRECINCT OFFICES

WRITE-IN

PRECINCT COMMITTEEMAN
TWO (2) YEAR TERM
VOTE FOR ONE (1)

WRITE-IN

PRECINCT COMMITTEEWOMAN
TWO (2) YEAR TERM
VOTE FOR ONE (1)

WRITE-IN

OFFICIAL PARTISAN PRIMARY ELECTION BALLOT

LIBERTARIAN PARTY

VOTE BOTH SIDES

**Election Judge
Initials** _____

CARBON COUNTY, AUGUST 16, 2016

01-02-2 (SKYLINE ACRES HD15)

INSTRUCTIONS TO VOTERS

TO VOTE FOR A PERSON WHOSE NAME IS PRINTED ON THE BALLOT, MARK THE OVAL IMMEDIATELY ADJACENT TO THE NAME OF THE PERSON FOR WHOM YOU DESIRE TO VOTE.

TO VOTE FOR A PERSON WHOSE NAME IS NOT PRINTED ON THE BALLOT, WRITE HIS NAME ON THE BLANK SPACE PROVIDED FOR THAT PURPOSE **AND** MARK THE OVAL IMMEDIATELY ADJACENT TO THE NAME OF THE PERSON.

VOTE LIKE THIS: ●

PARTISAN OFFICES

COUNTY OFFICES

FEDERAL OFFICES

CARBON COUNTY COMMISSIONER
FOUR (4) YEAR TERM
VOTE FOR NOT MORE THAN THREE (3)

UNITED STATES REPRESENTATIVE
TWO (2) YEAR TERM
VOTE FOR ONE (1)

- WRITE-IN
- WRITE-IN
- WRITE-IN

- LAWRENCE GERARD STRUEMPF
- WRITE-IN

CARBON COUNTY CLERK OF DISTRICT COURT
UNEXPIRED TERM: TWO (2) YEARS
VOTE FOR NOT MORE THAN ONE (1)

- WRITE-IN

STATE OFFICES

PRECINCT OFFICES

HOUSE DISTRICT 15
TWO (2) YEAR TERM
VOTE FOR ONE (1)

PRECINCT COMMITTEEMAN
TWO (2) YEAR TERM
VOTE FOR ONE (1)

- WRITE-IN

- WRITE-IN

PRECINCT COMMITTEEWOMAN
TWO (2) YEAR TERM
VOTE FOR ONE (1)

- WRITE-IN

OFFICIAL PARTISAN PRIMARY ELECTION BALLOT

CONSTITUTION PARTY

VOTE BOTH SIDES

Election Judge Initials _____

CARBON COUNTY, AUGUST 16, 2016

01-02-3 (T17N R89&90W)

INSTRUCTIONS TO VOTERS

TO VOTE FOR A PERSON WHOSE NAME IS PRINTED ON THE BALLOT, MARK THE OVAL IMMEDIATELY ADJACENT TO THE NAME OF THE PERSON FOR WHOM YOU DESIRE TO VOTE.

TO VOTE FOR A PERSON WHOSE NAME IS NOT PRINTED ON THE BALLOT, WRITE HIS NAME ON THE BLANK SPACE PROVIDED FOR THAT PURPOSE AND MARK THE OVAL IMMEDIATELY ADJACENT TO THE NAME OF THE PERSON.

VOTE LIKE THIS: ●

PARTISAN OFFICES

COUNTY OFFICES

FEDERAL OFFICES

CARBON COUNTY COMMISSIONER
FOUR (4) YEAR TERM
VOTE FOR NOT MORE THAN THREE (3)

UNITED STATES REPRESENTATIVE
TWO (2) YEAR TERM
VOTE FOR ONE (1)

WRITE-IN
 WRITE-IN
 WRITE-IN

DANIEL CLYDE CUMMINGS
 WRITE-IN

STATE OFFICES

CARBON COUNTY CLERK OF DISTRICT COURT
UNEXPIRED TERM: TWO (2) YEARS
VOTE FOR NOT MORE THAN ONE (1)

HOUSE DISTRICT 47
TWO (2) YEAR TERM
VOTE FOR ONE (1)

WRITE-IN

WRITE-IN

PRECINCT OFFICES

PRECINCT COMMITTEEMAN
TWO (2) YEAR TERM
VOTE FOR ONE (1)

WRITE-IN

PRECINCT COMMITTEEWOMAN
TWO (2) YEAR TERM
VOTE FOR ONE (1)

WRITE-IN

OFFICIAL PARTISAN PRIMARY ELECTION BALLOT

LIBERTARIAN PARTY

VOTE BOTH SIDES

**Election Judge
Initials** _____

CARBON COUNTY, AUGUST 16, 2016

01-02-3 (T17N R89&90W)

INSTRUCTIONS TO VOTERS

TO VOTE FOR A PERSON WHOSE NAME IS PRINTED ON THE BALLOT, MARK THE OVAL IMMEDIATELY ADJACENT TO THE NAME OF THE PERSON FOR WHOM YOU DESIRE TO VOTE.

TO VOTE FOR A PERSON WHOSE NAME IS NOT PRINTED ON THE BALLOT, WRITE HIS NAME ON THE BLANK SPACE PROVIDED FOR THAT PURPOSE **AND** MARK THE OVAL IMMEDIATELY ADJACENT TO THE NAME OF THE PERSON.

VOTE LIKE THIS: ●

PARTISAN OFFICES

COUNTY OFFICES

FEDERAL OFFICES

CARBON COUNTY COMMISSIONER

FOUR (4) YEAR TERM

VOTE FOR NOT MORE THAN THREE (3)

UNITED STATES REPRESENTATIVE

TWO (2) YEAR TERM

VOTE FOR ONE (1)

WRITE-IN

WRITE-IN

WRITE-IN

LAWRENCE GERARD STRUEMPF

WRITE-IN

CARBON COUNTY CLERK OF DISTRICT COURT

UNEXPIRED TERM: TWO (2) YEARS

VOTE FOR NOT MORE THAN ONE (1)

WRITE-IN

STATE OFFICES

PRECINCT OFFICES

HOUSE DISTRICT 47

TWO (2) YEAR TERM

VOTE FOR ONE (1)

PRECINCT COMMITTEEMAN

TWO (2) YEAR TERM

VOTE FOR ONE (1)

WRITE-IN

WRITE-IN

PRECINCT COMMITTEEWOMAN

TWO (2) YEAR TERM

VOTE FOR ONE (1)

WRITE-IN

OFFICIAL PARTISAN PRIMARY ELECTION BALLOT

CONSTITUTION PARTY

VOTE BOTH SIDES

Election Judge Initials _____

CARBON COUNTY, AUGUST 16, 2016

01-02-4 (T16N R88-90W)

INSTRUCTIONS TO VOTERS

TO VOTE FOR A PERSON WHOSE NAME IS PRINTED ON THE BALLOT, MARK THE OVAL IMMEDIATELY ADJACENT TO THE NAME OF THE PERSON FOR WHOM YOU DESIRE TO VOTE.

TO VOTE FOR A PERSON WHOSE NAME IS NOT PRINTED ON THE BALLOT, WRITE HIS NAME ON THE BLANK SPACE PROVIDED FOR THAT PURPOSE AND MARK THE OVAL IMMEDIATELY ADJACENT TO THE NAME OF THE PERSON.

VOTE LIKE THIS: ●

PARTISAN OFFICES

COUNTY OFFICES

FEDERAL OFFICES

CARBON COUNTY COMMISSIONER
FOUR (4) YEAR TERM
VOTE FOR NOT MORE THAN THREE (3)

UNITED STATES REPRESENTATIVE
TWO (2) YEAR TERM
VOTE FOR ONE (1)

DANIEL CLYDE CUMMINGS

WRITE-IN

WRITE-IN

WRITE-IN

WRITE-IN

STATE OFFICES

CARBON COUNTY CLERK OF DISTRICT COURT
UNEXPIRED TERM: TWO (2) YEARS
VOTE FOR NOT MORE THAN ONE (1)

HOUSE DISTRICT 47
TWO (2) YEAR TERM
VOTE FOR ONE (1)

WRITE-IN

WRITE-IN

PRECINCT OFFICES

PRECINCT COMMITTEEMAN
TWO (2) YEAR TERM
VOTE FOR ONE (1)

WRITE-IN

PRECINCT COMMITTEEWOMAN
TWO (2) YEAR TERM
VOTE FOR ONE (1)

WRITE-IN

OFFICIAL PARTISAN PRIMARY ELECTION BALLOT

LIBERTARIAN PARTY

VOTE BOTH SIDES

**Election Judge
Initials** _____

CARBON COUNTY, AUGUST 16, 2016

01-02-4 (T16N R88-90W)

INSTRUCTIONS TO VOTERS

TO VOTE FOR A PERSON WHOSE NAME IS PRINTED ON THE BALLOT, MARK THE OVAL IMMEDIATELY ADJACENT TO THE NAME OF THE PERSON FOR WHOM YOU DESIRE TO VOTE.

TO VOTE FOR A PERSON WHOSE NAME IS NOT PRINTED ON THE BALLOT, WRITE HIS NAME ON THE BLANK SPACE PROVIDED FOR THAT PURPOSE **AND** MARK THE OVAL IMMEDIATELY ADJACENT TO THE NAME OF THE PERSON.

VOTE LIKE THIS: ●

PARTISAN OFFICES

COUNTY OFFICES

FEDERAL OFFICES

CARBON COUNTY COMMISSIONER
FOUR (4) YEAR TERM
VOTE FOR NOT MORE THAN THREE (3)

UNITED STATES REPRESENTATIVE
TWO (2) YEAR TERM
VOTE FOR ONE (1)

- _____
WRITE-IN
- _____
WRITE-IN
- _____
WRITE-IN

- LAWRENCE GERARD STRUEMPF
- _____
WRITE-IN

CARBON COUNTY CLERK OF DISTRICT COURT
UNEXPIRED TERM: TWO (2) YEARS
VOTE FOR NOT MORE THAN ONE (1)

STATE OFFICES

HOUSE DISTRICT 47
TWO (2) YEAR TERM
VOTE FOR ONE (1)

- _____
WRITE-IN

PRECINCT OFFICES

- _____
WRITE-IN

PRECINCT COMMITTEEMAN
TWO (2) YEAR TERM
VOTE FOR ONE (1)

- _____
WRITE-IN

PRECINCT COMMITTEEWOMAN
TWO (2) YEAR TERM
VOTE FOR ONE (1)

- _____
WRITE-IN

OFFICIAL PARTISAN PRIMARY ELECTION BALLOT

REPUBLICAN PARTY

VOTE BOTH SIDES

Election Judge Initials _____

CARBON COUNTY, AUGUST 16, 2016

01-02-0 (INSIDE RAWLINS HD15)

INSTRUCTIONS TO VOTERS

TO VOTE FOR A PERSON WHOSE NAME IS PRINTED ON THE BALLOT, MARK THE OVAL IMMEDIATELY ADJACENT TO THE NAME OF THE PERSON FOR WHOM YOU DESIRE TO VOTE.

TO VOTE FOR A PERSON WHOSE NAME IS NOT PRINTED ON THE BALLOT, WRITE HIS NAME ON THE BLANK SPACE PROVIDED FOR THAT PURPOSE AND MARK THE OVAL IMMEDIATELY ADJACENT TO THE NAME OF THE PERSON.

VOTE LIKE THIS: ●

PARTISAN OFFICES

STATE OFFICES

FEDERAL OFFICES

HOUSE DISTRICT 15

TWO (2) YEAR TERM
VOTE FOR ONE (1)

UNITED STATES REPRESENTATIVE

TWO (2) YEAR TERM
VOTE FOR ONE (1)

DONALD BURKHART

WRITE-IN

COUNTY OFFICES

CARBON COUNTY COMMISSIONER

FOUR (4) YEAR TERM
VOTE FOR NOT MORE THAN THREE (3)

SUE JONES

TERRY WEICKUM

JOHN ESPY

LINDY GLODE

WRITE-IN

WRITE-IN

WRITE-IN

PAUL PAAD

REX RAMMELL

JASON ADAM SENTENEY

DARIN SMITH

TIM STUBSON

HEATH BEAUDRY

LIZ CHENEY

LELAND CHRISTENSEN

MIKE KONSMO

WRITE-IN

DEMOCRATIC PARTY

VOTE BOTH SIDES

Election Judge Initials _____

CARBON COUNTY, AUGUST 16, 2016

01-02-0 (INSIDE RAWLINS HD15)

INSTRUCTIONS TO VOTERS

TO VOTE FOR A PERSON WHOSE NAME IS PRINTED ON THE BALLOT, MARK THE OVAL IMMEDIATELY ADJACENT TO THE NAME OF THE PERSON FOR WHOM YOU DESIRE TO VOTE.

TO VOTE FOR A PERSON WHOSE NAME IS NOT PRINTED ON THE BALLOT, WRITE HIS NAME ON THE BLANK SPACE PROVIDED FOR THAT PURPOSE AND MARK THE OVAL IMMEDIATELY ADJACENT TO THE NAME OF THE PERSON.

VOTE LIKE THIS:

PARTISAN OFFICES

COUNTY OFFICES

FEDERAL OFFICES

CARBON COUNTY COMMISSIONER
FOUR (4) YEAR TERM
VOTE FOR NOT MORE THAN THREE (3)

UNITED STATES REPRESENTATIVE
TWO (2) YEAR TERM
VOTE FOR ONE (1)

KENDA J. COLMAN

CHARLIE HARDY

WRITE-IN

RYAN GREENE

WRITE-IN

WRITE-IN

WRITE-IN

STATE OFFICES

CARBON COUNTY CLERK OF DISTRICT COURT
UNEXPIRED TERM: TWO (2) YEARS
VOTE FOR NOT MORE THAN ONE (1)

HOUSE DISTRICT 15
TWO (2) YEAR TERM
VOTE FOR ONE (1)

WRITE-IN

PRECINCT OFFICES

DEBARI T. MARTINEZ

PRECINCT COMMITTEEMAN
TWO (2) YEAR TERM
VOTE FOR ONE (1)

WRITE-IN

WRITE-IN

PRECINCT COMMITTEEWOMAN
TWO (2) YEAR TERM
VOTE FOR ONE (1)

WRITE-IN

OFFICIAL PARTISAN PRIMARY ELECTION BALLOT

REPUBLICAN PARTY

VOTE BOTH SIDES

Election Judge Initials _____

CARBON COUNTY, AUGUST 16, 2016

01-02-1 (OUTSIDE RAWLINS HD47)

INSTRUCTIONS TO VOTERS

TO VOTE FOR A PERSON WHOSE NAME IS PRINTED ON THE BALLOT, MARK THE OVAL IMMEDIATELY ADJACENT TO THE NAME OF THE PERSON FOR WHOM YOU DESIRE TO VOTE.

TO VOTE FOR A PERSON WHOSE NAME IS NOT PRINTED ON THE BALLOT, WRITE HIS NAME ON THE BLANK SPACE PROVIDED FOR THAT PURPOSE AND MARK THE OVAL IMMEDIATELY ADJACENT TO THE NAME OF THE PERSON.

VOTE LIKE THIS: ●

PARTISAN OFFICES

STATE OFFICES

FEDERAL OFFICES

HOUSE DISTRICT 47

TWO (2) YEAR TERM
VOTE FOR ONE (1)

UNITED STATES REPRESENTATIVE

TWO (2) YEAR TERM
VOTE FOR ONE (1)

- JULIE MCCALLISTER
- JERRY PAXTON
- _____
WRITE-IN

- PAUL PAAD
- REX RAMMELL
- JASON ADAM SENTENEY
- DARIN SMITH
- TIM STUBSON
- HEATH BEAUDRY
- LIZ CHENEY
- LELAND CHRISTENSEN
- MIKE KONSMO
- _____
WRITE-IN

COUNTY OFFICES

CARBON COUNTY COMMISSIONER

FOUR (4) YEAR TERM
VOTE FOR NOT MORE THAN THREE (3)

- SUE JONES
- TERRY WEICKUM
- JOHN ESPY
- LINDY GLODE
- _____
WRITE-IN
- _____
WRITE-IN
- _____
WRITE-IN

DEMOCRATIC PARTY

VOTE BOTH SIDES

Election Judge Initials _____

CARBON COUNTY, AUGUST 16, 2016

01-02-1 (OUTSIDE RAWLINS HD47)

INSTRUCTIONS TO VOTERS

TO VOTE FOR A PERSON WHOSE NAME IS PRINTED ON THE BALLOT, MARK THE OVAL IMMEDIATELY ADJACENT TO THE NAME OF THE PERSON FOR WHOM YOU DESIRE TO VOTE.

TO VOTE FOR A PERSON WHOSE NAME IS NOT PRINTED ON THE BALLOT, WRITE HIS NAME ON THE BLANK SPACE PROVIDED FOR THAT PURPOSE AND MARK THE OVAL IMMEDIATELY ADJACENT TO THE NAME OF THE PERSON.

VOTE LIKE THIS:

PARTISAN OFFICES

COUNTY OFFICES

FEDERAL OFFICES

CARBON COUNTY COMMISSIONER
FOUR (4) YEAR TERM
VOTE FOR NOT MORE THAN THREE (3)

UNITED STATES REPRESENTATIVE
TWO (2) YEAR TERM
VOTE FOR ONE (1)

KENDA J. COLMAN

CHARLIE HARDY

WRITE-IN

RYAN GREENE

WRITE-IN

WRITE-IN

WRITE-IN

CARBON COUNTY CLERK OF DISTRICT COURT
UNEXPIRED TERM: TWO (2) YEARS
VOTE FOR NOT MORE THAN ONE (1)

STATE OFFICES

WRITE-IN

HOUSE DISTRICT 47
TWO (2) YEAR TERM
VOTE FOR ONE (1)

PRECINCT OFFICES

KEN CASNER

PRECINCT COMMITTEEMAN
TWO (2) YEAR TERM
VOTE FOR ONE (1)

WRITE-IN

WRITE-IN

PRECINCT COMMITTEEWOMAN
TWO (2) YEAR TERM
VOTE FOR ONE (1)

WRITE-IN

REPUBLICAN PARTY

VOTE BOTH SIDES

Election Judge Initials

CARBON COUNTY, AUGUST 16, 2016

01-02-2 (SKYLINE ACRES HD15)

INSTRUCTIONS TO VOTERS

TO VOTE FOR A PERSON WHOSE NAME IS PRINTED ON THE BALLOT, MARK THE OVAL IMMEDIATELY ADJACENT TO THE NAME OF THE PERSON FOR WHOM YOU DESIRE TO VOTE.

TO VOTE FOR A PERSON WHOSE NAME IS NOT PRINTED ON THE BALLOT, WRITE HIS NAME ON THE BLANK SPACE PROVIDED FOR THAT PURPOSE AND MARK THE OVAL IMMEDIATELY ADJACENT TO THE NAME OF THE PERSON.

VOTE LIKE THIS: [filled oval]

PARTISAN OFFICES

STATE OFFICES

FEDERAL OFFICES

HOUSE DISTRICT 15
TWO (2) YEAR TERM
VOTE FOR ONE (1)

UNITED STATES REPRESENTATIVE
TWO (2) YEAR TERM
VOTE FOR ONE (1)

[] DONALD BURKHART

[] WRITE-IN

COUNTY OFFICES

CARBON COUNTY COMMISSIONER
FOUR (4) YEAR TERM
VOTE FOR NOT MORE THAN THREE (3)

[] SUE JONES

[] TERRY WEICKUM

[] JOHN ESPY

[] LINDY GLODE

[] WRITE-IN

[] WRITE-IN

[] WRITE-IN

- [] PAUL PAAD
[] REX RAMMELL
[] JASON ADAM SENTENEY
[] DARIN SMITH
[] TIM STUBSON
[] HEATH BEAUDRY
[] LIZ CHENEY
[] LELAND CHRISTENSEN
[] MIKE KONSMO
[] WRITE-IN

OFFICIAL PARTISAN PRIMARY ELECTION BALLOT

DEMOCRATIC PARTY

VOTE BOTH SIDES

Election Judge Initials _____

CARBON COUNTY, AUGUST 16, 2016

01-02-2 (SKYLINE ACRES HD15)

INSTRUCTIONS TO VOTERS

TO VOTE FOR A PERSON WHOSE NAME IS PRINTED ON THE BALLOT, MARK THE OVAL IMMEDIATELY ADJACENT TO THE NAME OF THE PERSON FOR WHOM YOU DESIRE TO VOTE.

TO VOTE FOR A PERSON WHOSE NAME IS NOT PRINTED ON THE BALLOT, WRITE HIS NAME ON THE BLANK SPACE PROVIDED FOR THAT PURPOSE AND MARK THE OVAL IMMEDIATELY ADJACENT TO THE NAME OF THE PERSON.

VOTE LIKE THIS:

PARTISAN OFFICES

COUNTY OFFICES

FEDERAL OFFICES

CARBON COUNTY COMMISSIONER

FOUR (4) YEAR TERM

VOTE FOR NOT MORE THAN THREE (3)

UNITED STATES REPRESENTATIVE

TWO (2) YEAR TERM

VOTE FOR ONE (1)

CHARLIE HARDY

RYAN GREENE

WRITE-IN

KENDA J. COLMAN

WRITE-IN

WRITE-IN

WRITE-IN

STATE OFFICES

CARBON COUNTY CLERK OF DISTRICT COURT

UNEXPIRED TERM: TWO (2) YEARS

VOTE FOR NOT MORE THAN ONE (1)

HOUSE DISTRICT 15

TWO (2) YEAR TERM

VOTE FOR ONE (1)

WRITE-IN

PRECINCT OFFICES

DEBARI T. MARTINEZ

WRITE-IN

PRECINCT COMMITTEEMAN

TWO (2) YEAR TERM

VOTE FOR ONE (1)

WRITE-IN

PRECINCT COMMITTEEWOMAN

TWO (2) YEAR TERM

VOTE FOR ONE (1)

WRITE-IN

OFFICIAL PARTISAN PRIMARY ELECTION BALLOT

REPUBLICAN PARTY

VOTE BOTH SIDES

Election Judge Initials _____

CARBON COUNTY, AUGUST 16, 2016

01-02-3 (T17N R89&90W)

INSTRUCTIONS TO VOTERS

TO VOTE FOR A PERSON WHOSE NAME IS PRINTED ON THE BALLOT, MARK THE OVAL IMMEDIATELY ADJACENT TO THE NAME OF THE PERSON FOR WHOM YOU DESIRE TO VOTE.

TO VOTE FOR A PERSON WHOSE NAME IS NOT PRINTED ON THE BALLOT, WRITE HIS NAME ON THE BLANK SPACE PROVIDED FOR THAT PURPOSE AND MARK THE OVAL IMMEDIATELY ADJACENT TO THE NAME OF THE PERSON.

VOTE LIKE THIS: 

PARTISAN OFFICES

STATE OFFICES

FEDERAL OFFICES

HOUSE DISTRICT 47

TWO (2) YEAR TERM
VOTE FOR ONE (1)

UNITED STATES REPRESENTATIVE

TWO (2) YEAR TERM
VOTE FOR ONE (1)

- PAUL PAAD
- REX RAMMELL
- JASON ADAM SENTENEY
- DARIN SMITH
- TIM STUBSON
- HEATH BEAUDRY
- LIZ CHENEY
- LELAND CHRISTENSEN
- MIKE KONSMO
- WRITE-IN

- JULIE MCCALLISTER
- JERRY PAXTON
- WRITE-IN

COUNTY OFFICES

CARBON COUNTY COMMISSIONER

FOUR (4) YEAR TERM
VOTE FOR NOT MORE THAN THREE (3)

- SUE JONES
- TERRY WEICKUM
- JOHN ESPY
- LINDY GLODE
- WRITE-IN
- WRITE-IN
- WRITE-IN

OFFICIAL PARTISAN PRIMARY ELECTION BALLOT

DEMOCRATIC PARTY

VOTE BOTH SIDES

Election Judge Initials _____

CARBON COUNTY, AUGUST 16, 2016

01-02-3 (T17N R89&90W)

INSTRUCTIONS TO VOTERS

TO VOTE FOR A PERSON WHOSE NAME IS PRINTED ON THE BALLOT, MARK THE OVAL IMMEDIATELY ADJACENT TO THE NAME OF THE PERSON FOR WHOM YOU DESIRE TO VOTE.

TO VOTE FOR A PERSON WHOSE NAME IS NOT PRINTED ON THE BALLOT, WRITE HIS NAME ON THE BLANK SPACE PROVIDED FOR THAT PURPOSE AND MARK THE OVAL IMMEDIATELY ADJACENT TO THE NAME OF THE PERSON.

VOTE LIKE THIS:

PARTISAN OFFICES

COUNTY OFFICES

FEDERAL OFFICES

CARBON COUNTY COMMISSIONER

FOUR (4) YEAR TERM

VOTE FOR NOT MORE THAN THREE (3)

UNITED STATES REPRESENTATIVE

TWO (2) YEAR TERM

VOTE FOR ONE (1)

KENDA J. COLMAN

WRITE-IN

WRITE-IN

WRITE-IN

CHARLIE HARDY

RYAN GREENE

WRITE-IN

CARBON COUNTY CLERK OF DISTRICT COURT

UNEXPIRED TERM: TWO (2) YEARS

VOTE FOR NOT MORE THAN ONE (1)

STATE OFFICES

HOUSE DISTRICT 47

TWO (2) YEAR TERM

VOTE FOR ONE (1)

WRITE-IN

PRECINCT OFFICES

PRECINCT COMMITTEEMAN

TWO (2) YEAR TERM

VOTE FOR ONE (1)

KEN CASNER

WRITE-IN

WRITE-IN

PRECINCT COMMITTEEWOMAN

TWO (2) YEAR TERM

VOTE FOR ONE (1)

WRITE-IN

REPUBLICAN PARTY

VOTE BOTH SIDES

Election Judge Initials _____

CARBON COUNTY, AUGUST 16, 2016

01-02-4 (T16N R88-90W)

INSTRUCTIONS TO VOTERS

TO VOTE FOR A PERSON WHOSE NAME IS PRINTED ON THE BALLOT, MARK THE OVAL IMMEDIATELY ADJACENT TO THE NAME OF THE PERSON FOR WHOM YOU DESIRE TO VOTE.

TO VOTE FOR A PERSON WHOSE NAME IS NOT PRINTED ON THE BALLOT, WRITE HIS NAME ON THE BLANK SPACE PROVIDED FOR THAT PURPOSE AND MARK THE OVAL IMMEDIATELY ADJACENT TO THE NAME OF THE PERSON.

VOTE LIKE THIS: ●

PARTISAN OFFICES

STATE OFFICES

FEDERAL OFFICES

HOUSE DISTRICT 47
TWO (2) YEAR TERM
VOTE FOR ONE (1)

UNITED STATES REPRESENTATIVE
TWO (2) YEAR TERM
VOTE FOR ONE (1)

- JULIE MCCALLISTER
- JERRY PAXTON
- _____
WRITE-IN

- PAUL PAAD
- REX RAMMELL
- JASON ADAM SENTENEY
- DARIN SMITH
- TIM STUBSON
- HEATH BEAUDRY
- LIZ CHENEY
- LELAND CHRISTENSEN
- MIKE KONSMO
- _____
WRITE-IN

COUNTY OFFICES

CARBON COUNTY COMMISSIONER
FOUR (4) YEAR TERM
VOTE FOR NOT MORE THAN THREE (3)

- SUE JONES
- TERRY WEICKUM
- JOHN ESPY
- LINDY GLODE
- _____
WRITE-IN
- _____
WRITE-IN
- _____
WRITE-IN

OFFICIAL PARTISAN PRIMARY ELECTION BALLOT

DEMOCRATIC PARTY

VOTE BOTH SIDES

Election Judge Initials _____

CARBON COUNTY, AUGUST 16, 2016

01-02-4 (T16N R88-90W)

INSTRUCTIONS TO VOTERS

TO VOTE FOR A PERSON WHOSE NAME IS PRINTED ON THE BALLOT, MARK THE OVAL IMMEDIATELY ADJACENT TO THE NAME OF THE PERSON FOR WHOM YOU DESIRE TO VOTE.

TO VOTE FOR A PERSON WHOSE NAME IS NOT PRINTED ON THE BALLOT, WRITE HIS NAME ON THE BLANK SPACE PROVIDED FOR THAT PURPOSE AND MARK THE OVAL IMMEDIATELY ADJACENT TO THE NAME OF THE PERSON.

VOTE LIKE THIS:

PARTISAN OFFICES

COUNTY OFFICES

FEDERAL OFFICES

CARBON COUNTY COMMISSIONER

FOUR (4) YEAR TERM

VOTE FOR NOT MORE THAN THREE (3)

UNITED STATES REPRESENTATIVE

TWO (2) YEAR TERM

VOTE FOR ONE (1)

CHARLIE HARDY

RYAN GREENE

WRITE-IN

KENDA J. COLMAN

WRITE-IN

WRITE-IN

WRITE-IN

STATE OFFICES

CARBON COUNTY CLERK OF DISTRICT COURT

UNEXPIRED TERM: TWO (2) YEARS

VOTE FOR NOT MORE THAN ONE (1)

HOUSE DISTRICT 47

TWO (2) YEAR TERM

VOTE FOR ONE (1)

KEN CASNER

WRITE-IN

WRITE-IN

PRECINCT OFFICES

PRECINCT COMMITTEEMAN

TWO (2) YEAR TERM

VOTE FOR ONE (1)

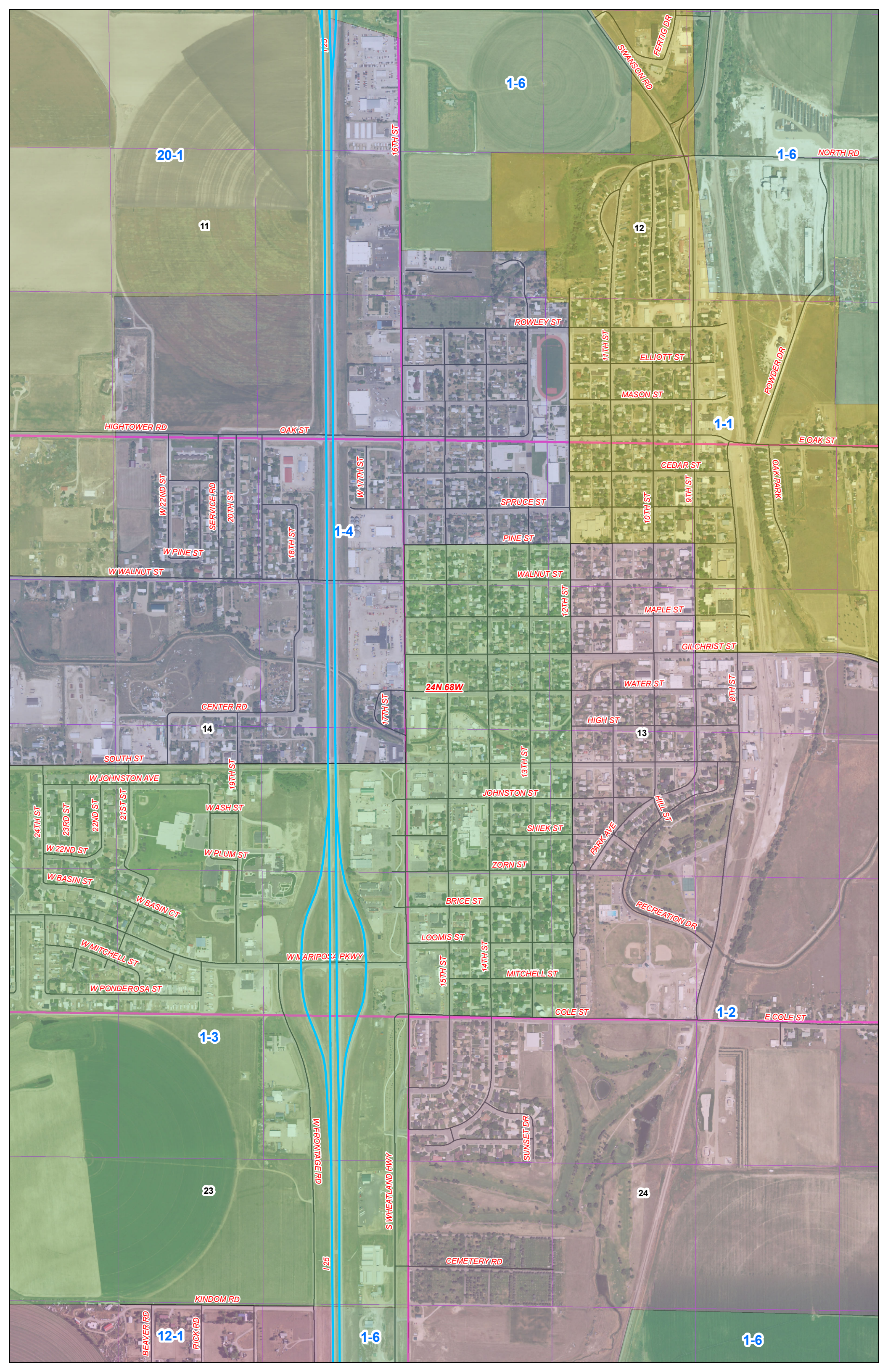
WRITE-IN

PRECINCT COMMITTEEWOMAN

TWO (2) YEAR TERM

VOTE FOR ONE (1)

WRITE-IN



1-6

20-1

1-6

11

12

HIGHTOWER RD

OAK ST

ROWLEY ST

11TH ST

ELLIOTT ST

MASON ST

1-1

POWDER DR

NORTH RD

E OAK ST

W 22ND ST

SERVICE RD

20TH ST

W PINE ST

18TH ST

W WALNUT ST

1-4

W 17TH ST

SPRUCE ST

PINE ST

11TH ST

ELLIOTT ST

MASON ST

1-1

POWDER DR

NORTH RD

E OAK ST

W 22ND ST

SERVICE RD

20TH ST

W PINE ST

18TH ST

W WALNUT ST

1-4

W 17TH ST

SPRUCE ST

PINE ST

11TH ST

ELLIOTT ST

MASON ST

1-1

POWDER DR

NORTH RD

E OAK ST

14

CENTER RD

SOUTH ST

W JOHNSTON AVE

WASH ST

W PLUM ST

24TH ST

23RD ST

22ND ST

21ST ST

W BASIN ST

W BASIN CT

W MITCHELL ST

W PONDEROSA ST

17TH ST

24N 68W

HIGH ST

WATER ST

13

JOHNSTON ST

SHIEK ST

ZORN ST

BRICE ST

LOOMIS ST

MITCHELL ST

COLE ST

PARK AVE

HILL ST

RECREATION DR

1-2

E COLE ST

1-3

23

W FRONTAGE RD

S WHEATLAND HWY

CEMETERY RD

24

SUNSET DR

12-1

BEAVER RD

RICK RD

1-6

1-6

KINDOM RD