

WYOMING GAMING COMMISSION

(Formerly known as Wyoming Pari-Mutuel Commission)

2019 ANNUAL REPORT



Energy II Building
951 Werner Court, Suite 335
Casper, WY 82601
Phone: (307) 265-4015
Fax: (307) 265-4279
Website: gaming.wyo.gov

CONTENTS

CONTENTS.....	2
EXECUTIVE DIRECTOR LETTER.....	3
COMMISSIONERS & STAFF	4
ORGANIZATIONAL CHART	5
THE COMMISSION	6
PHILOSOPHY	6
AGENCY OVERVIEW.....	7
AGENCY REVIEW	7
PERMITTEES & EVENTS.....	8
OFF-TRACK BETTING LOCATIONS	9
PARI-MUTUEL ACTIVITY	10
LICENSING	11
REGULATORY OVERSIGHT	12, 13
HISTORIC RACING	14-18
SIMULCAST	19
COMPARISON CHARTS.....	20
ADVANCED DEPOSIT WAGERING	21
TOURISM.....	21
BREEDER AWARDS PROGRAM.....	22
BREEDER AWARDS COMPARISON	23
LIVE MEET STATISTICS.....	24
PROBLEM GAMBLING.....	25



Governor
Mark Gordon

Wyoming Gaming Commission
Energy II Building, 951 Werner Court, Suite 335
Casper, WY 82601
Phone: (307) 265-4015 Fax: (307) 265-4279

Executive Director
Charles E. Moore

COMMISSIONERS

Bob Davis, President Troy Broussard, Vice President
Tom J. Berry, DVM Dick Currah Sherry Daigle Danny Glick Randy Leinen Dwane Pacheco Jenni Wildcat

June 1, 2020

The Honorable Mark Gordon
Governor of the State of Wyoming
200 West 24th Street
Cheyenne, WY 82002

Dear Governor Gordon:

It is an honor to provide you with the 2019 Annual Report of the Wyoming Gaming Commission and to be a part of the revitalization of horse racing in the Cowboy State.

The industry provides jobs and opportunities in the agricultural and service industries, which diversify our economy. In 2019, the Commission licensed over 1,400 individuals who worked, owned, and participated in horse racing or wagering activities.

The Wyoming Breeders Award Fund once again set records in 2019. Over \$3.2 million was available for distribution to participants in the incentive program.

Local municipalities throughout Wyoming have also benefited from the wagering activity, and again the payouts to these communities are exceeding previous year-end totals. The total paid in 2019 to local municipalities was over \$7.9 million from Historic Horse Racing activities.

The success of last year was astounding and surpassed all previous years. However, as we know from recent experiences, the landscape is ever changing and delicate. The Commission continues to be dedicated and working efficiently, reviewing our processes and fulfilling our mission in securing the safety, integrity and fairness of racing and wagering.

Sincerely,

Charles E. Moore

Charles E. Moore
Executive Director

WYOMING GAMING COMMISSION



Governor Mark Gordon

COMMISSIONERS

<i>Commissioner</i>	<i>City</i>	<i>County</i>
Bob Davis (President)	Baggs	Carbon
Troy Broussard (Vice President)	Wapiti	Park
Tom Berry, DVM	Buffalo	Johnson
Dick Currah	Lander	Fremont
Sherry Daigle	Jackson	Teton
Danny Glick	Cheyenne	Laramie
Randy Leinen	Sundance	Crook
Dwane Pacheco	Rock Springs	Sweetwater
Jenni Wildcat	Riverton	Fremont

Senator Ogden Driskell, Legislative Liaison

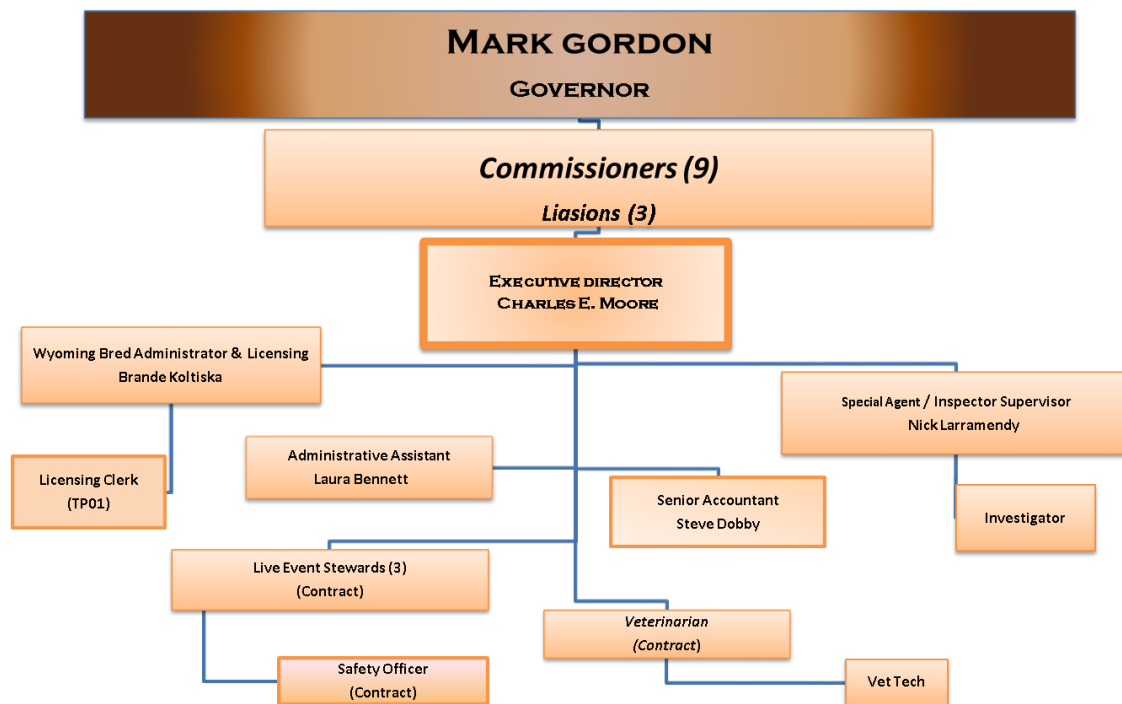
Representative Tom Walters, Legislative Liaison

Daniel Schiffer, Governor Liaison

STAFF

<i>Employee</i>	<i>Title</i>
Charles E. Moore	Executive Director / Simulcast Steward
Laura Bennett	Administrative Assistant
Brandee Koltiska	Licensing Supervisor / Wyoming Bred Program Administrator
Steve Dobby	Senior Accountant / Wagering Activity
Nick Larramendy	Special Agent / Inspector

ORGANIZATIONAL CHART



The agency's structure features an executive group headed by the Executive Director and a support staff that is responsible for regulatory and field staff.

Horse racing is undoubtedly the most thoroughly regulated of all sports. The Wyoming Gaming Commission workforce features a diverse collection of professionals that includes auditors, veterinarians, stewards, investigators, licensing staff and support personnel.

The Gaming Commission operates from 100% augmented revenue and is totally self-supporting

In 2019 Contract Personnel Included:

State Stewards; "3" are charged with the duty of enforcing the State of Wyoming Gaming Commission Rules of Racing, and Pari-Mutuel Events and State Statutes 11-25-101 through 11-25-113.

Safety Officer/Deputy Steward; is charged with monitoring all safety aspects resulting from Live Race Meet operations, both human and equine, to ensure the integrity of racing and compliance with horse racing laws and regulations.

Commission Veterinarian with Vet Assistant; is responsible for the administration of the Commission's Drug Testing Policy and the general health of the animals.

THE COMMISSION

The Governor with the consent of the Senate shall appoint the nine (9) members of the Commission in accordance with W.S. 28-12-101 through 28-12-103. Seven (7) of the nine (9) members shall be appointed from each appointment district under W.S. 9-1-218. One (1) of the remaining members shall be, at the time of appointment and during the term of appointment, an active county or municipal law enforcement officer, one (1) of the remaining members shall be an enrolled member of the Northern Arapaho or Eastern Shoshone Indian tribe with not less than five (5) years of regulatory experience. Members shall be appointed for terms of four (4) years and until their successor is appointed and qualified. Any vacancy shall be filled by appointment by the Governor as provided in W.S. 28-12-101. A member of the Commission may succeed himself for one (1) full four (4) year term. The Governor may remove any member as provided in W.S. 9-1-202. Additionally, one (1) Senator appointed by the President of the Senate, one (1) Representative appointed by the Speaker of the House and one (1) gubernatorial liaisons shall be paid salary, per diem and mileage as provided in W.S. 28-5-101 when attending meetings of the commission.



PHILOSOPHY

The primary goals of the Wyoming Gaming Commission are to ensure all lawful gaming and horse racing activities conducted in the state are of the highest integrity, credibility and excellence. The Commission is committed

to protecting the wagering public in the gaming and horse racing industries and to promote the health, safety and welfare of all participants, both human and equine. The Commission aspires to provide the regulatory structure necessary for Wyoming gaming activity to operate effectively and in a responsible manner, as well as to see that all stakeholders and consumers are treated in an equitable fashion.



AGENCY OVERVIEW

The Wyoming Gaming Commission is self-funded by the entities it regulates. The agency's revenue primarily comes from fees assessed to racetrack operators and occupational licensees.

The Commission regulates all aspects of pari-mutuel wagering through licensing, on-site monitoring and enforcement. Statutes and rules require the Commission to:



License all entities that are involved with pari-mutuel wagering including racetrack operators, vendors, service providers and individuals who participate in racing and those directly involved with the racetrack and off track betting sites throughout Wyoming.



Allocate & approve race dates, supervise the conduct of all races, monitor the health and safety of the race animals and conduct drug tests to ensure the animals race without prohibited substances.



Oversee all pari-mutuel wagering activity, approve simulcasts, audit tote system and historic racing terminals, to ensure proper allocation and distribution of revenue generated by all pari-mutuel wagering.



Administer and oversee the Wyoming Breeders Award Program, including the accreditation and payout of breeder funds.

2019 AGENCY REVIEW

ADMINISTRATIVE: The agency coordinated five (5) regular Commission Meetings and three (3) teleconference meetings during 2019. Targeted issues included Historic Racing issues, compliance audits, licensees, updated rule changes, human and animal welfare, as well as problem gambling, to name a few.

INVESTIGATIONS & INSPECTIONS: The Staff, Investigator, Board of Stewards and Safety Steward continued to perform inspections at all operating racetracks and licensed OTB Facilities to ensure the safety of the public, participants and animals involved in racing. Also, the agency implemented broodmare inspections regarding the Wyoming Bred Rules.

LEGISLATIVE CHANGE: Passage of HB 279 Enrolled Act 119 – Effective 7/1/19

REGULATORY: A pari-mutuel auditor reviewed wagering data on all live races, simulcast, historic racing and advanced deposit wagering operations to ensure proper collection and distribution of funds. Commission staff ensured all participants were in compliance with Wyoming Statutes and the Rules of Pari-Mutuel Events.

PERMITTEES & EVENTS

WYOMING HAS TWO (2) LICENSED PERMITTEES:

WYOMING DOWNS, LLC. Permittee

1925 Harrison Drive, Evanston, WY 82930



14 Days of Live Racing in 2019

July 6th – August 18th (Saturday & Sunday)

Operating at the “Wyoming Downs Racetrack” Evanston, WY

365 Simulcast Days

Operating: 7 Days a Week (Monday – Sunday)

WYOMING HORSE RACING, LLC. Permittee

724 Front Street, Suite 617, Evanston, WY 82930



WYOMING HORSE RACING

16 Days of Live Racing in 2019

June 14th, 15th, 16th, 21st, 22nd, 23rd, 28th, 29th, 30th

August 23rd, 24th, 25th, 31st September 1st, 7th, 8th

7 Days Operating at the “Sweetwater Events Complex,” Rock Springs, WY

9 Days Operating at “Energy Downs - Camplex,” Gillette, WY

364 Simulcast Days (Closed: 12/25)

Operating: 7 Days a Week (Monday – Sunday)

Permits are issued for a specific period of up to three years to any Wyoming county, city, incorporated town, county fair board, or any corporation or association which has been approved by the local Board of County Commissioners. The Commission may issue, amend, or refuse to issue permits at its discretion.

OFF-TRACK BETTING LOCATIONS

Seventeen (17) Locations for 2019

Casper / Evansville / Mills

The Beacon Club
4100 W. Yellowstone Hwy
Mills, WY 82604
OTB operated by Wyoming Horse Racing, LLC

Wyoming Downs OTB (Galloways)
2800 CY Avenue
Casper, WY 82604
OTB operated by Wyoming Downs, LLC

Casper Horse Palace
71 SE Wyoming Blvd
Casper, WY 82609
OTB operated by Wyoming Horse Racing, LLC

Wyoming Downs OTB
359 Miracle Street
Evansville, WY 82636
OTB operated by Wyoming Downs, LLC

Cheyenne

Cheyenne Horse Palace
1802 Dell Range, Suite 3
Cheyenne, WY 82009
OTB operated by Wyoming Horse Racing, LLC

Cheyenne Plaza
3617 East Lincolnway
Cheyenne, WY 82604
OTB operated by Wyoming Downs, LLC

Outlaw Saloon
312 S. Greeley Hwy
Cheyenne, WY 82007
OTB operated by Wyoming Downs, LLC

Gillette

Gillette Horse Palace (Sundance Lounge)
1020 E Hwy 14-16
Gillette, WY 82716
OTB operated by Wyoming Horse Racing, LLC

Wyoming Downs OTB
2212 Westover Road
Gillette, WY 82718
OTB operated by Wyoming Downs, LLC

Evanston

Evanston Horse Palace
1945 Harrison Drive
Evanston, WY 82930
OTB operated by Wyoming Horse Racing, LLC

Wyoming Downs OTB
1925 Harrison Drive
Evanston, WY 82930
OTB operated by Wyoming Downs, LLC

Green River

Green River Horse Palace (Town Bar & Grill)
95 E. Railroad Avenue
Green River, WY 82935
OTB operated by Wyoming Horse Racing, LLC

Laramie

Wyoming Downs OTB
750 N 3rd Street #666
Laramie, WY 82070
OTB operated by Wyoming Downs, LLC

Rock Springs

Bombers Sports Bar & Grill
1549 Elk Street
Rock Springs, WY 82901
OTB operated by Wyoming Horse Racing, LLC

Wyoming Downs OTB
2201 Foothill Blvd, Unit H
Rock Springs, WY 82901
OTB operated by Wyoming Downs, LLC

Sheridan

Wyoming Downs OTB
1294 Coffeen Avenue
Sheridan, WY 82801
OTB operated by Wyoming Downs, LLC

Sheridan Horse Palace
2240 Coffeen Ave, Suite B
Sheridan, WY 82801
OTB operated by Wyoming Horse Racing, LLC

WYOMING PARI-MUTUEL COMMISSION
OFF TRACK BETTING LOCATIONS

PARI-MUTUEL ACTIVITY

A pari-mutuel event may not be held in any county until the question has been put to the people of the county to accept or reject pari-mutuel betting. Once voter approval is given for pari-mutuel that proposition approval is of a continuing nature and need not be voted on in subsequent years.

ALBANY	1969 - 1971	Racing
	1973 - 1984, 1998 - 2008	Roping
	1976	Chariot Racing
	1989 – 1990, 2013 - 2019	Simulcasting
CARBON	2009	Simulcasting
CAMPBELL	1981, 1983, 1984	Roping
	1986-1992, 1994–1996, 2018-2019	Racing
	1995, 2014-2019	Simulcasting
FREMONT	1969 - 1969	Racing
	1989–1990, 2011-2012, 2016-2017	Simulcasting
JOHNSON	2011-2012	Simulcasting
LARAMIE	1968 - 1972	Racing
	1989 - 2019	Simulcasting
NATRONA	1969 – 1998, 2017	Racing
	1989 - 2019	Simulcasting
SHERIDAN	2009	Roping
	1989 – 1990, 2013 - 2019	Simulcasting
SWEETWATER	1982 – 1993, 2011-2019	Racing
	1989 - 2019	Simulcasting
UINTA	1970, 1985 – 2009, 2013 - 2019	Racing
	1989 – 2019	Simulcasting
	2010	Roping

Counties Approved Through Proper Election: Albany, Campbell, Carbon, Fremont, Goshen, Johnson, Laramie, Natrona, Platte, Sheridan, Sweetwater, Teton, Uinta & Weston.

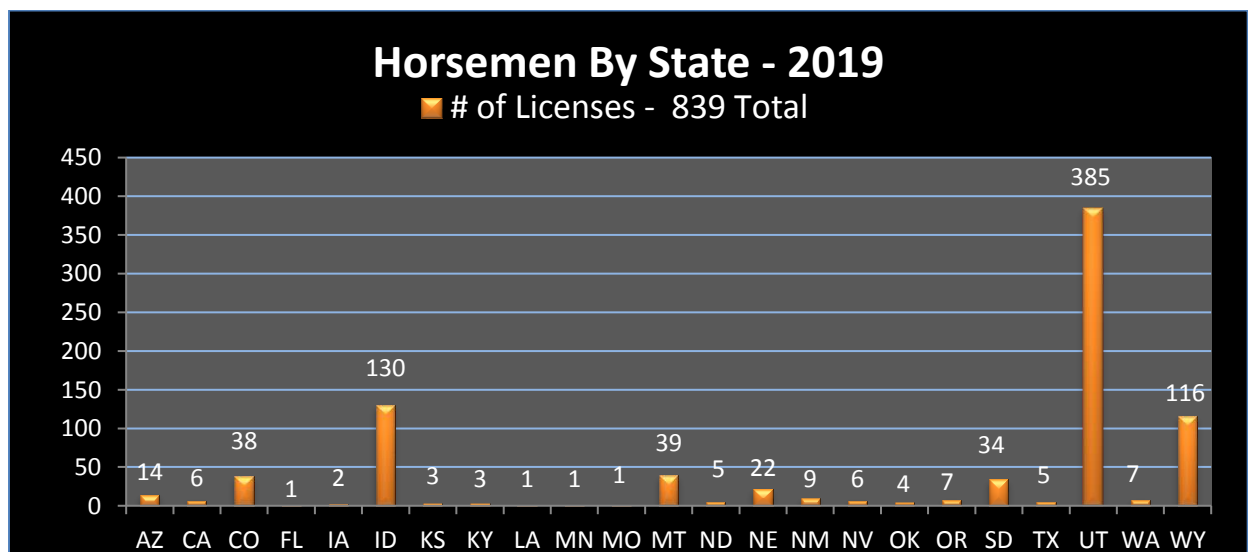
LICENSING

In order that the Commission may protect the integrity of racing and determine who may be permitted on the grounds of a permittee, all participants of an event are licensed, fingerprinted and issued a badge. Persons holding a license or a permit issued by the Commission are required to comply with all rules and regulations of the Commission and with the Wyoming Statutes as well as with all orders issued by the Commission.



In 2019, 1,404 Licenses were issued.

License Type	# of Licenses	Notes
Horsemen	839	Owner (396) Trainer/Assistant Trainer (26) Jockey/Exercise Rider/Agent (51) Owner/Trainer (144) Groom (146) Vet (4) Pony Rider (20) Stable (34) Plater (1) Assistant Starter (16) Vendor (1)
Permittee Employees	127	Live Race Meet Employees & Officials
Mutuel Employees	329	Mutuel Employees & Mutuel Managers
Commission	21	Staff/Investigator/Stewards/Vet/Commissioners
Vendors & Employees	88	ADW Companies/Simulcast Providers/Host Facilities/Live Meet Vendor/Vendor Employees/Simulcast Employees
TOTAL:	1,404	



REGULATORY OVERSIGHT

SECURITY & COMPLIANCE:

- **Wyoming Gaming Commission**

Video Surveillance is mandatory. Each Off Track Betting (OTB) facility that offers Historic Racing is required to supply the Commission with security camera access.

Facility inspections are performed at each OTB location on a regular basis by a WGC staff member.

- **Association Of Racing Commissioners International**

As an active and proud member of the Association of Racing Commissioners International (ARCI), which is composed of governmental regulators in the United States, WGC is legally charged with the responsibility to ensure the integrity of racing and pari-mutuel wagering. The Commission utilizes this connection by fostering communication across state lines, which allows the checking of licensees across the nation for problems, searching rulings and other racing related subjects.



TESTING & AUDITS:



- **Gaming Laboratories International, LLC**

(GLI) is an independent laboratory which tests all historic racing game themes for compliance in accordance with the requirements set forth in the Wyoming Gaming Commission rules and regulations.

Performs Historic Racing Terminal Software Audits for the Commission and is also retained as a consultant.

- **Thoroughbred Racing Protective Bureau**

(TRPB) mandate is to expose and investigate all activity prejudicial to horse racing and to maintain public confidence in the sport of racing.

The TRPB performs a monthly terminal audit & on-site terminal verification.

- **Wyoming Gaming Commission**

The Commission staff executes and reviews independent daily terminal specific reporting and audits including but not limited to: Allocation/ Transaction / Liability/ IRS/ Machine Sales (Handle)/ Pool Summary.



REGULATORY OVERSIGHT

DRUG SCREENING & TESTING:

- **ALS - Truesdail Laboratories, Inc.**
The Wyoming Gaming Commission conducts blood, urine and hair analysis on horses participating in Pari-Mutuel events. ALS - Truesdail Laboratories Inc., in Tustin, California performed the analysis for the detection of illegal and impermissible drugs, as well as abuse of permissible medications.



In 2019, there were 483 blood samples, 148 hair samples and 2 urine samples taken and an analysis performed for horses participating in Wyoming.



INTEGRITY/PROTECTION/SAFETY/WELFARE:

Live Race Meet Inspections

Barn Inspections/Monitoring	68
Electric Device Searches	175
Inspection Health Papers	100
Random Alcohol Tests	105

Wyoming Breeders Program Inspections

# of Mares & Stallions Inspected	710
# of Mares & Stallions Suspended Due To Moving, Death, Sale, Etc.	45
# of Suspended (Non Compliant)	81
Total Breeding Stock Accounted For	584

HISTORIC RACING

The State of Wyoming authorized Historic Racing in 2013, with the passage of *HB 25 Enrolled Act 46, allowing wagering on Historic Racing.*



Historic Racing Enabling Statutes: *Wyo. Statutes § 11-25-102(a),(v)&(vii)(A),(B) & Wyo. Statutes § 11-25-104(m)*

Historic Racing Distribution of Funds: *Wyo. Statutes § § 11-25-105 (a),(b)(i)-(iii), (j)*

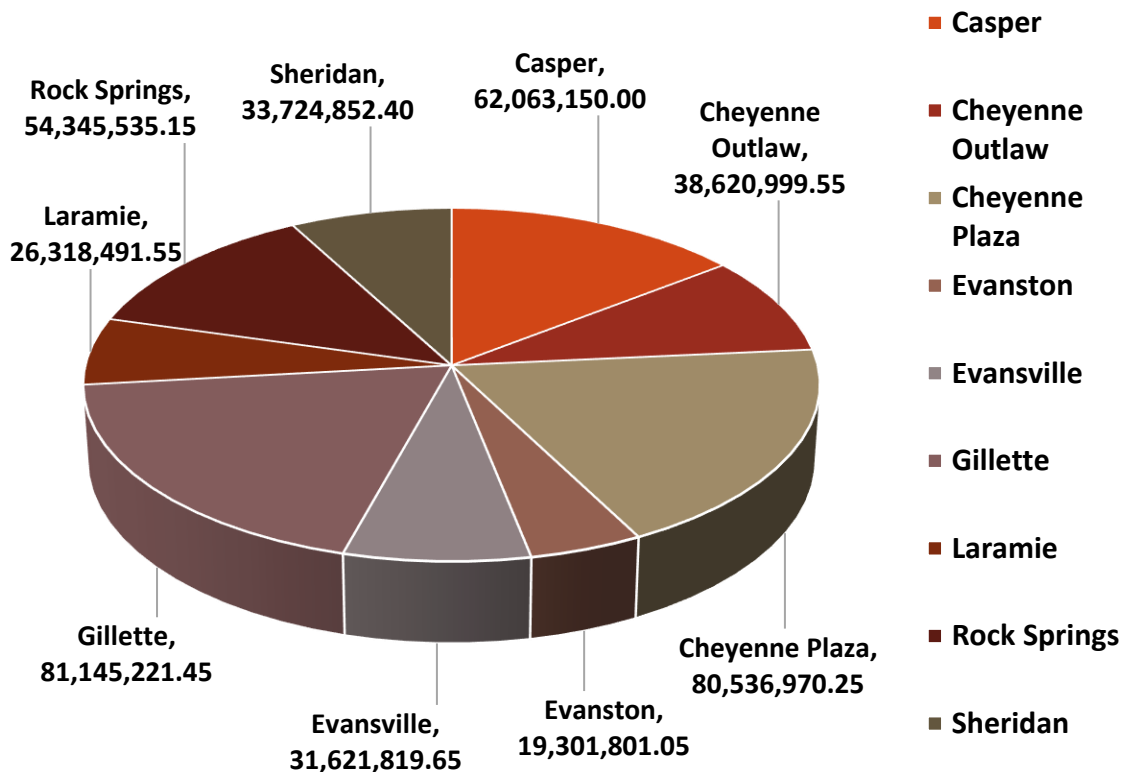
HISTORIC RACING SUMMARY – TOTAL	
Total Handle Historic Racing	\$ 793,477,137.10
Total Payout - Return To Public	\$ 732,490,633.51
Total Takeout	\$ 59,076,312.83
Total Breakage	\$ 822,135.90
Total Breeder Award Fund	\$ 3,173,908.54
Total LSRA Fund (Legislative Stabilization Reserve Account) *7/1/20	\$ 1,051,647.93
Total State	\$ 2,915,737.75
Total City/County	\$ 7,934,771.37
<i>Note: Totals Do Not Include Settlement Amounts & Carryovers</i>	

HISTORIC RACING

HISTORIC RACING SUMMARY – PER PERMITTEE

Wyoming Downs, LLC	
Handle	\$ 427,678,841.05
Takeout	\$ 30,533,777.60
Breeder Award Fund	\$ 1,710,715.36
LSRA Fund	\$ 580,245.05
Breakage	\$ 781,095.04
State	\$ 1,558,149.15
City/County	\$ 4,276,788.41

Wyoming Downs 2019 HHRT's Handle By Location

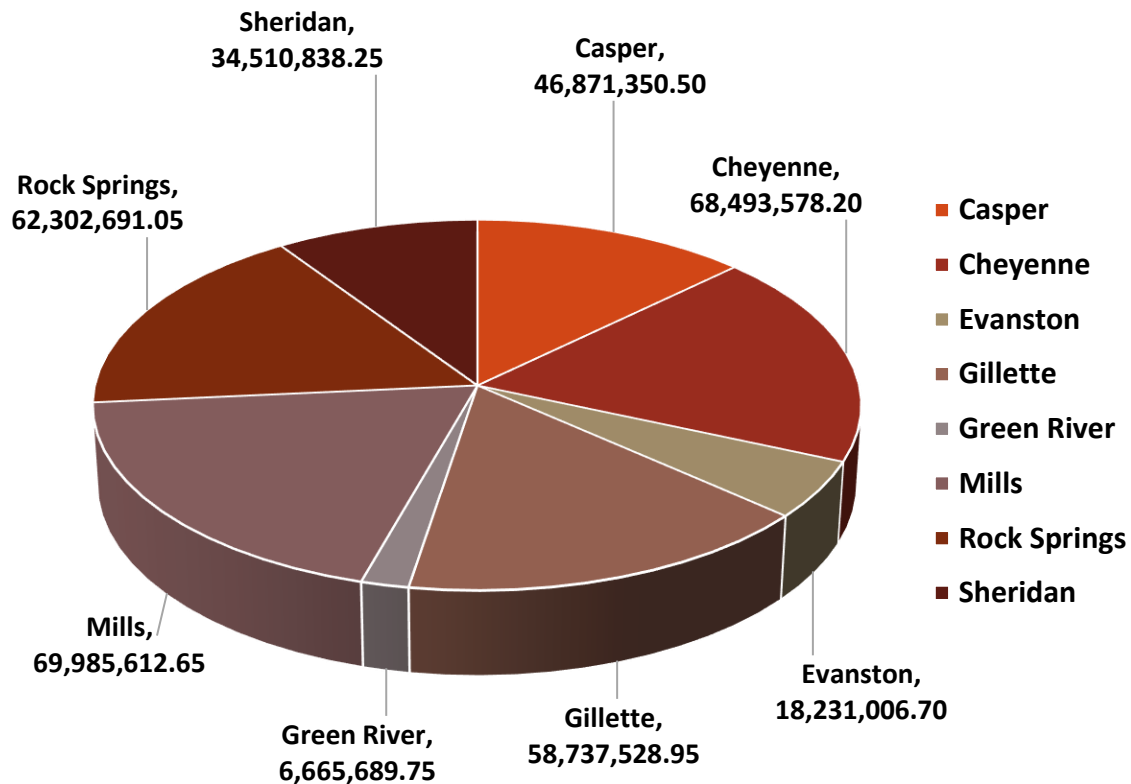


HISTORIC RACING

HISTORIC RACING SUMMARY – PER PERMITTEE

Wyoming Horse Racing, LLC	
Handle	\$ 365,798,296.05
Takeout	\$ 28,542,535.23
Breeder Award Fund	\$ 1,463,193.18
LSRA Fund	\$ 471,402.88
Breakage	\$ 41,040.86
State	\$ 1,357,588.60
City/County	\$ 3,657,982.96

Wyoming Horse Racing 2019 HHRT's Handle By Location



HISTORIC RACING

ADJUSTED GROSS REVENUE - PER PERMITTEE

Wyoming Downs LLC - HHR 2019			
Takeout	\$ 30,533,777.60	<u>% of Handle</u>	
Breakage	\$ 781,095.04	7.14%	
AGR (Adjusted Gross Revenue)	\$ 31,314,872.64	0.18%	
		<u>% of Handle</u>	<u>% of AGR</u>
Breeders Award Fund	\$ 1,710,715.36	7.32%	
State	\$ 1,558,149.15	0.40%	5.46%
LSRA (Legislative Stabilization Reserve Account)	\$ 580,245.05	0.36%	4.98%
City/County	\$ 4,276,788.41	0.14%	1.85%
Total	\$ 8,125,897.97	1.00%	13.66%
Settlement	\$ 997,751.60	1.90%	25.95%
Handle	\$ 427,678,841.05		
Return To Public	\$ 395,366,216.81	<u>Payback %</u>	
		92.44%	
Wyoming Horse Racing LLC - HHR 2019			
Takeout	\$ 28,542,535.23	<u>% of Handle</u>	
Breakage	\$ 41,040.86	7.80%	
AGR (Adjusted Gross Revenue)	\$ 28,583,576.09	0.01%	
		<u>% of Handle</u>	<u>% of AGR</u>
Breeders Award Fund	\$ 1,463,193.18	7.81%	
State	\$ 1,357,588.60	0.40%	5.12%
LSRA (Legislative Stabilization Reserve Account)	\$ 471,402.88	0.37%	4.75%
City/County	\$ 3,657,982.96	0.13%	1.65%
Total	\$ 6,950,167.62	1.00%	12.80%
Settlement	\$ 90,303.26	1.90%	24.32%
Handle	\$ 365,798,296.05		
Return To Public	\$ 337,124,416.70	<u>Payback %</u>	
		92.16%	
Wyoming Totals - HHR 2019			
Takeout	\$ 59,076,312.83	<u>% of Handle</u>	
Breakage	\$ 822,135.90	7.45%	
AGR (Adjusted Gross Revenue)	\$ 59,898,448.73	0.10%	
		<u>% of Handle</u>	<u>% of AGR</u>
Breeders Award Fund	\$ 3,173,908.54	7.55%	
State	\$ 2,915,737.75	0.40%	5.30%
LSRA (Legislative Stabilization Reserve Account)	\$ 1,051,647.93	0.37%	4.87%
City/County	\$ 7,934,771.37	0.13%	1.76%
Total	\$ 15,076,065.59	1.00%	13.25%
Settlement	\$ 1,088,054.86	1.90%	25.17%
Handle	\$ 793,477,137.10		
Return To Public	\$ 732,490,633.51	<u>Payback %</u>	
		92.31%	

HISTORIC RACING

HISTORIC RACING SUMMARY – PER CITY/COUNTY

One percent (1%) of the total amount wagered attributable to historic pari-mutuel wagering events, shown by the report to the commission, to be transferred by the commission to the county and the city or town in which the permittee is located, in equal shares, or to the county alone, if the permittee is not located within the boundaries of a city or town.

Total Paid To Cities & Counties: \$7,934,771.37

Wyoming Downs, LLC (WD) \$ 4,276,788.41
Wyoming Horse Racing, LLC (WHR) \$ 3,657,982.96

Revenue - By City	
Casper	\$ 544,672.50 (WD 310,315.5 / 234,356.75)
Cheyenne	\$ 745,152.75 (WD 402,684.86 / WHR 342,467.89)
Evanston	\$ 187,664.04 (WD 96,509.00 / WHR 91,155.04)
Evansville	\$ 158,109.10 (WD 158,109.10)
Gillette	\$ 699,413.76 (WD 405,726.11 / WHR 293,687.65)
Green River	\$ 33,328.45 (WHR 33,328.45)
Mills	\$ 349,928.06 (WHR 349,928.06)
Rock Springs	\$ 583,241.13 (WD 271,727.67 / WHR 311,513.46)
Sheridan	\$ 341,178.45 (WD 168,624.26 / WHR 172,554.19)

Revenue - By County	
Albany	\$ 131,592.46 (WD 131,592.46)
Campbell	\$ 699,413.76 (WD 405,726.11 / WHR 293,687.65)
Laramie	\$ 1,131,362.75 (WD 788,894.86 / WHR 342,467.89)
Natrona	\$ 1,052,709.66 (WD 468,424.85 / WHR 584,284.81)
Sheridan	\$ 341,178.45 (WD 168,624.26 / WHR 172,554.19)
Sweetwater	\$ 616,569.58 (WD 271,727.67 / WHR 344,841.91)
Uinta	\$ 187,664.04 (WD 96,509.00 / WHR 91,155.04)

Please Note: +.03¢ Difference For City/County Payouts - Due to Rounding – Paid \$7,934,771.40
GreenRiver: New Location July 18, 2019

SIMULCAST



TOTAL SIMULCAST SUMMARY

Wyoming Downs, LLC & Wyoming Horse Racing, LLC	
Combined Total Handle Simulcast	\$ 3,784,923.40
Combined Total Breakage	\$ 12,867.65
Combined Total Breeder Award Fund	\$ 23,787.75
Combined Total State	\$ 56,721.23

SIMULCAST SUMMARY – PER PERMITTEE

Wyoming Downs, LLC	
Handle	\$ 1,996,370.60
Breakage	\$ 6,485.30
Breeder Award Fund	\$ 12,367.83
State	\$ 29,927.38
<u>Per Site Handle:</u>	
Casper	\$ 20,506.40
Cheyenne (Outlaw)	\$ 20,164.60
Cheyenne (Plaza)	\$ 764,254.60
Evanston	\$ 722,670.80
Evansville (New Site: 7/5/19)	\$ 22,798.20
Gillette	\$ 359,174.20
Laramie	\$ 16,397.00
Rock Springs	\$ 50,947.30
Sheridan	\$ 19,457.50
Wyoming Horse Racing, LLC	
Handle	\$ 1,788,552.80
Breakage	\$ 6,382.35
Breeder Award Fund	\$ 11,419.92
State	\$ 26,793.85
<u>Per Site Handle:</u>	
Casper	\$ 286,568.50
Cheyenne	\$ 485,753.60
Evanston	\$ 302,292.10
Gillette	\$ 164,947.60
Green River (New Site: 7/18/19)	\$ 17,553.20
Mills	\$ 194,353.70
Rock Springs	\$ 222,080.90
Sheridan	\$ 115,003.20

COMPARISON CHARTS

LIVE ANNUAL COMPARISON

	2019	2018	2017	2016
Actual Days Racing	30	34	30	22
Total Handle (Wagers)	\$ 1,683,393.60	\$ 1,560,504.80	\$ 1,456,663.70	\$ 1,019,471.40
Breakage to Permittees	\$ 15,971.42	\$ 14,681.97	\$ 14,350.22	\$ 9,628.41
State Commission	\$ 25,251.02	\$ 23,407.63	\$ 15,609.63	\$ 15,291.81
Breeder's Award	\$ 12,438.17	\$ 11,849.96	\$ 11,448.13	\$ 8,212.58

SIMULCAST ANNUAL COMPARISON

	2019	2018	2017	2016
Actual Days Simulcast	365	365	365	365
Total Handle (Wagers)	\$ 3,784,923.40	\$ 3,849,563.30	\$ 3,976,878.70	\$ 5,092,156.80
Average Daily Handle	\$ 10,369.65	\$ 10,546.75	\$ 10,895.56	\$ 13,952.00
Breakage to Permittees	\$ 12,867.65	\$ 15,035.81	\$ 14,355.52	\$ 19,827.96
State Commission	\$ 56,721.23	\$ 57,067.23	\$ 59,653.27	\$ 76,382.35
Breeder Award	\$ 23,787.75	\$ 24,471.10	\$ 25,112.88	\$ 32,564.02

HISTORIC RACING COMPARISON

	2019	2018	2017	2016
Actual Days Historic Racing	365	365	365	365
Total Handle (Wagers)	\$ 793,477,137.10	\$ 570,598,999.60	\$ 420,210,518.05	\$238,797,157.92
Breakage to Permittees	\$ 822,735.90	\$ 773,269.80	\$ 592,010.62	\$ 91,721.57
State Commission	\$ 2,915,737.75	\$ 2,852,995.00	\$ 2,101,052.59	\$ 1,193,985.79
Breeder Award	\$ 3,173,908.54	\$ 2,282,396.00	\$ 1,680,842.07	\$ 955,188.63
Wyoming Municipalities (City/County)	\$ 7,934,771.37	\$ 5,705,989.99	\$ 4,202,105.18	\$ 2,387,971.58
LSRA Fund *	\$ 1,051,647.93			
Returned to the Public	\$ 525,61,688.77	\$ 525,61,688.77	\$ 387,264,463.28	\$220,367,549.91

*(LSRA Fund: Legislative Stabilization Reserve Account Started July 1, 2019)

ADVANCED DEPOSIT WAGERING

ADVANCE DEPOSIT WAGERING, a form of pari-mutuel wagering in which an account holder, residing within or outside Wyoming, establishes an account and then authorizes a Commission approved Permittee, Betting System or WY Hub, by telephone or other electronic media, to place wagers on racing on the account holder's behalf. Only the Permittee, Betting System, or Wyoming Hub that holds the account can make an advance deposit wager for the account holder. Wagering instructions that concern funds held in an account shall be deemed issued within the enclosure of the Permittee.

OUT-OF-STATE SOURCE MARKET FEES

PURSUANT TO 11-25-105 (m) (i) - (iv) / As A Result of Enrolled Act 3 HB 31, 2011

TOTAL WAGERED: \$ 2,167,250.67

TOTAL PAID TO WPMC: \$ 65,017.52

Breeders Awards - (10%)	\$ 6,501.75
OTB Operators - (10%)	\$ 6,501.75
Purse Enhancement - (75%)	\$ 48,763.14
State Fees - (5%)	\$ 3,250.88
ADW Sources: AmWest Entertainment / eBet Technologies / Gameplay / Expressbet NYRAbets / TVG Network / Twin Spires / U. S. Offtrack	

TOURISM



Tourism is the second largest industry in the State of Wyoming. Visitors stimulate the local economy and benefit hotels, restaurants, agriculture and countless other businesses.

Live Horse Racing makes an important contribution to the Wyoming economy, with an estimated total economic impact of well over \$50 million per year. In 2019, the Commission licensed over 1,400 people which either own, work or otherwise participate in pari-mutuel events. These licensees are the backbone of the industry and work each and every day to provide quality racing to the State of Wyoming.

BREEDER AWARDS PROGRAM

The racing and breeding industries are a valuable sector of the Cowboy State's economy and agribusiness.

As a condition of receiving a pari-mutuel permit, the permittee shall agree to contribute to the Wyoming Breeders Award Fund administered by the commission pursuant to W. S. § 11-25-105 (j).



The award fund is designed to encourage and foster the breeding and racing of Wyoming-bred horses.

Each Permittee licensed by the Commission shall offer at least one Wyoming Bred quarter horse race and one Wyoming Bred thoroughbred race each day during the meeting.

2019 TOTAL FOR BREEDERS: \$3,216,636.21

Advance Deposit Wagering (ADW)	\$ 6,501.75
Historic Racing - Wyoming Downs	\$ 1,710,715.36
Historic Racing - Wyoming Horse Racing	\$ 1,463,193.18
Live - Wyoming Downs	\$ 10,523.49
Live - Wyoming Horse Racing	\$ 1,914.68
Simulcast - Wyoming Downs	\$ 12,367.83
Simulcast - Wyoming Horse Racing	\$ 11,419.92

BREEDERS AWARD FUND Breakdown Per Award

Owner Awards - (40%)	\$ 1,286,654.48
Breeder Awards - (40%)	\$ 1,286,654.48
Stallion Owner Awards - (20%)	\$ 643,327.25
Owner Awards Per Point (3941.5 Points)	\$ 326.44
Breeder Award Per Point (3941.5 Points)	\$ 326.44
Stallion Owner Award Per Point (1354 Points)	\$ 475.15

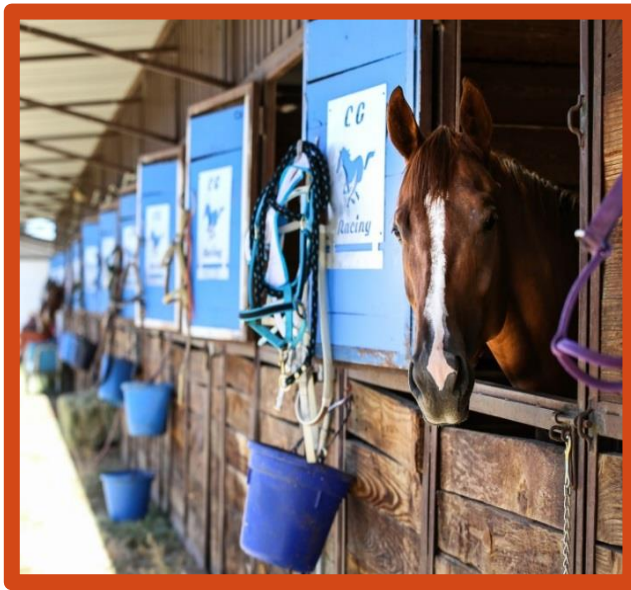
BREEDER AWARDS PROGRAM

BREEDERS AWARD FUND ANNUAL COMPARISON

	2019	2018	2017	2016
Live Days of Racing	30	34	30	22
Total Handle (Wagers)	\$ 1,629,700.00	\$ 1,560,504.80	\$ 1,459,437.50	\$ 1,019,471.40
Breeder's Award	\$ 12,438.17	\$ 11,979.58	\$ 11,448.13	\$ 8,212.58
	2019	2018	2017	2016
Simulcast Day of Racing	365	365	365	365
Total Handle (Wagers)	\$ 3,784,923.40	\$ 3,849,563.30	\$ 3,976,878.70	\$ 5,092,156.80
Breeder's Award	\$ 23,787.75	\$ 24,471.10	\$ 25,112.88	\$ 32,564.02
Advanced Deposit Wagering	\$ 6,501.75	\$ 6,007.21	\$ 6,055.54	\$ 6,349.89
Historic Racing Days	365	365	365	365
Total Handle (Wagers)	\$ 793,477,137.10	\$ 570,598,999.60	\$ 420,210,518.05	\$ 238,797,157.92
Breeder's Award	\$ 3,173,908.54	\$ 2,282,396.00	\$ 1,680,842.07	\$ 955,188.63
Total Breeders Award	\$ 3,216,636.21	\$ 2,234,853.89	\$ 1,723,458.62	\$ 1,002,315.12

- The Breeder Awards Fund Continued To Dramatically Rise Due To Historic Racing Revenue.
- 179 Wyoming Bred Horses Participated During 2019, Compared To 176 (2018) 120 (2017), 87 (2016) & 76 (2015).
- 3941.50 Total Points Were Accumulated for Owner/Breeder Points during 2019 compared to 3706.5 (2018) 2577 (2017), 1518 (2016), & 1381 (2015). 1354 Total Points Were Accumulated For Stallion Owner Awards In 2019 Compared To 1487 (2018) 1404.5 (2017), 999 (2016) & 708 (2015).
- Wyoming Racetracks Ran 276 Races, 55 Were Strictly For Registered Wyoming Bred Horses.
- 2,240 Horses Started At Wyoming Racetracks, 829 Were Registered Wyoming Bred starters.

LIVE MEET STATISTICS



Track	# of Days	# of Races	# of Starters	Purse Contribution (By Operator)	Total Purses Paid	Total Handle
Wyoming Downs (WD)	14	140	1,146	\$ 762,200.00	\$ 818,250.00	\$ 1,313,812.10
Wyoming Horse Racing (ED & SWF)	16	136	1,094	\$ 867,500.00	\$ 1,063,200.00	\$ 369,581.50
TOTAL:	30	276	2,240	\$ 1,629,700.00	\$ 1,881,450.00	\$ 1,683,393.60

Report based on figures provided to the Wyoming Pari-Mutuel Commission from Wyoming Downs, LLC and Wyoming Horse Racing, LLC - For Calendar Year 2019

30 RACE DATES GRANTED IN 2019

ENERGY DOWNS (ED) – GILLETTE - 9 DAYS
SWEETWATER DOWNS (SWF) – ROCK SPRINGS - 7 DAYS
WYOMING DOWNS (WD) – EVANSTON - 14 DAYS



National Council On Problem Gambling

1-800-522-4700

Call The 24 Hour Confidential Hotline or Visit Website at www.ncpgambling.org

“Problem Gambling”
is a gambling behavior
which causes
disruptions in any
major area of life:

Psychological
Physical
Social
Vocational

***GAMBLING
CAN BECOME A
PROBLEM FOR
ANYONE***

The term “Problem Gambling” includes, but is not limited to, the condition known as “Pathological”, or “Compulsive” Gambling, a progressive addiction characterized by increasing preoccupation with gambling, a need to bet more money more frequently, restlessness or irritability when attempting to stop, “chasing” losses, and loss of control manifested by continuation of the gambling behavior in spite of mounting, serious or negative consequences.

10 QUESTIONS ABOUT GAMBLING BEHAVIOR

- You have often gambled longer than you had planned.
- You have often gambled until your last dollar was gone.
- Thoughts of gambling have caused you to lose sleep.
- You have used your income or savings to gamble while letting bills go unpaid.
- You have made repeated, unsuccessful attempts to stop gambling.
- You have broken the law or considered breaking the law to finance your gambling.
- You have borrowed money to finance your gambling.
- You have felt depressed or suicidal because of your gambling losses.
- You have been remorseful after gambling.
- You have gambled to get money to meet your financial obligations.

IF.....

You or someone you know answers “YES” to any of these questions, consider seeking assistance from a professional regarding this gambling behavior.

**Call the National Problem Gambling Help Line
Network at (800) 522-4700.**

***All calls are toll free and confidential throughout
the U.S.***