



## WYOMING LEGISLATIVE SERVICE OFFICE

# Memorandum

**DATE** July 16, 2019  
**TO** Members, Wyoming Tomorrow's Task Force  
**FROM** Elizabeth Martineau, Associate Fiscal Analyst  
**SUBJECT** A review of post-secondary education financial assistance in Wyoming

### Introduction

This memorandum (memo) provides a high-level summary from the Legislative Service Office (LSO) to address the question:

What are the revenues from various sources, e.g., local, state, or federal related to post-secondary education and what is the level of expenditures for Wyoming post-secondary education, including student financial assistance?

In addition to using publicly available reports to prepare this memo, LSO staff received data and assistance from the Department of Education (WDE), the University of Wyoming (University), and the Wyoming Community College Commission (Commission). To ensure the most complete data, all information is for fiscal year (FY) 2015 through FY2018. Table 1 provides a guide for navigating between the fiscal year, academic year, and biennium.

**Table 1. Guide for Fiscal Year, Academic Year, and Biennium, FY2015 – FY2018.**

Fiscal Year	Academic Year	Biennium
<b>FY2015</b> (7/1/2014 to 6/30/2015)	2014-2015	2015-2016
<b>FY2016</b> (7/1/2015 to 6/30/2016)	2015-2016	
<b>FY2017</b> (7/1/2016 to 6/30/2017)	2016-2017	2017-2018
<b>FY2018</b> (7/1/2017 to 6/30/2018)	2017-2018	
<b>FY2019</b> (7/1/2018 to 6/30/2019)	2018-2019	2019-2020
<b>FY2020</b> (7/1/2019 to 6/30/2020)	2019-2020	

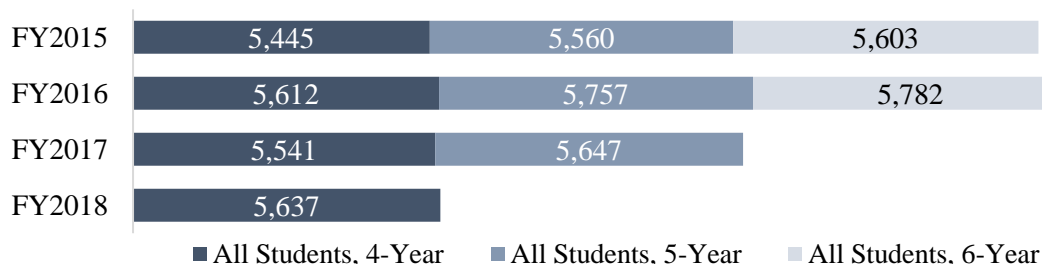
Source: LSO summary.

The memo is divided into multiple sections to address different aspects of post-secondary education student financial assistance, enrollment, and expenditures and measurements of existing programs. The main sections in this memo are as follows: (I) High school graduation rates; (II) Concurrent and dual enrollment data and information; (III) Mill levies; (IV) University of Wyoming data and information; (V) Wyoming Community College Commission data and information; (VI) Hathaway Scholarship Program data and information; and (VII) Federal Aid including (A) Federal Post-9/11 GI Bill Benefits data and information; (B) Federal Pell Grant data and information; and (C) Federal Student Loan data and Information.

## I. High School Graduation Rates

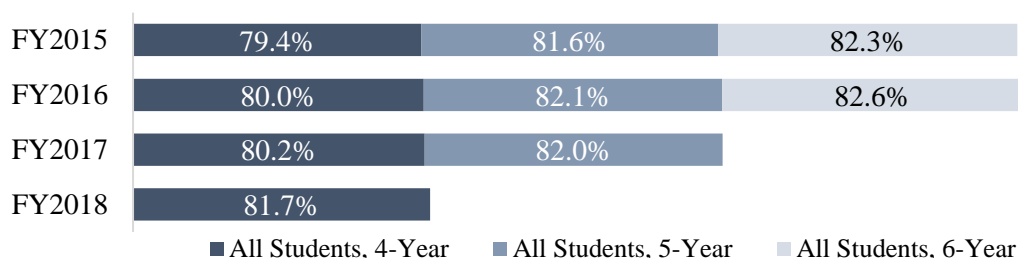
The WDE provided high school graduation data for FY2015 through FY2018 as shown in Figures 1 and 2. Between 128 and 133 students graduated early in each graduating class from FY2015 through FY2018. According to the WDE, early graduation is based on age, with nearly all students graduating one year early.

**Figure 1. Wyoming High School Graduates All Students, FY2015 – FY2018.**



Source: LSO summary of Department of Education information.

**Figure 2. Wyoming High School Graduation Rate All Students, FY2015 – FY2018.**



Source: LSO summary of Department of Education information.

## II. Dual and Concurrent Enrollment

The seven community colleges offer concurrent and dual enrollment courses, and the University only offers dual enrollment courses based upon agreements between the post-secondary institutions and school districts. As required by W.S. 21-20-201(e), the Commission publishes its *Report on Post-Secondary Education Options Program* annually in October to provide data about enrollment, expenditures, and revenues related to post-secondary credits for high school students. According to the Commission, the reports use data obtained from multiple sources, and all data that did not originate at the community college level may contain inconsistencies from one year to the next, e.g., some school districts did not report data in one year but did so in another year.

### Concurrent Enrollment

According to the Commission,

Concurrent enrollment courses are taught by high school faculty who meet each college's qualifications to teach the specific courses offered. Availability of a concurrent course is dependent upon the qualifications of high school faculty members to teach specific courses and the school district's decision to accept specific college course credit toward high school graduation.

Generally, these classes are taught by college-approved high school faculty at high school buildings for which a student may receive college credit in addition to high school credit. Table 2 provides the number of concurrently enrolled students from FY2015 through FY2018. During that time, on average, students completed 92% of the concurrently enrolled courses taken at community colleges. The University

enrollment numbers were not included in this calculation. Concurrently enrolled credit hours taken and completed can be found in Appendix A, Table 1.

**Table 2. Number of Concurrent Enrollment Students, FY2015 – FY2018.**

Post-Secondary Institution	FY2015	FY2016	FY2017	FY2018
Casper College	757	617	526	563
Central Wyoming College	674	807	703	684
Eastern Wyoming College	901	946	878	877
Laramie County Community College	770	749	788	1325
Northwest College	295	358	309	276
Northwest Community College District	1,404	1,419	1,173	1,225
Western Wyoming Community College	503	726	792	796
University of Wyoming	20	22	0	0
<b>Grand Total</b>	<b>5,324</b>	<b>5,644</b>	<b>5,169</b>	<b>5,746</b>

Source: LSO summary of Wyoming Community College Commission *Postsecondary Education Options Program* reports from FY2015 through FY2018.

Tables 3 and 4 provide the concurrent enrollment revenues and expenditures, respectively, for each post-secondary institution. Appendix B, Table 1, contains additional data regarding BOCES and BOCHES payments made to support concurrently enrolled students.

**Table 3. Concurrent Enrollment Post-Secondary Institution Revenue, FY2015 – FY2018.**

Post-Secondary Institution	FY2015	FY2016	FY2017	FY2018
Casper College	\$376,056	\$305,800	\$220,353	\$238,312
Central Wyoming College	\$223,929	\$235,066	\$218,143	\$532,178
Eastern Wyoming College	\$794,687	\$819,797	\$765,575	\$758,946
Laramie County Community College	\$204,844	\$218,290	\$270,198	\$511,360
Northwest College	\$186,154	\$199,545	\$190,596	\$144,021
Northwest Community College District	\$669,359	\$874,040	\$759,762	\$796,384
Western Wyoming Community College	\$321,530	\$213,761	\$388,576	\$405,383
University of Wyoming	\$3,600	\$4,400	\$0	\$0
<b>Grand Total</b>	<b>\$2,780,159</b>	<b>\$2,870,699</b>	<b>\$2,813,203</b>	<b>\$3,386,584</b>

Source: LSO summary of Wyoming Community College Commission *Postsecondary Education Options Program* reports from FY2015 through FY2018.

**Table 4. Concurrent Enrollment Post-Secondary Institution Expenditures, FY2015 – FY2018. \***

Post-Secondary Institution	FY2015	FY2016	FY2017	FY2018
Casper College	\$111,757	\$100,210	\$7,316	\$13,104
Central Wyoming College	\$296,985	\$697,549	\$84,283	\$385,298
Eastern Wyoming College	\$1,449,291	\$1,521,808	\$1,255,824	\$1,339,217
Laramie County Community College	\$416,766	\$452,332	\$251,469	\$947,841
Northwest College	\$297,633	\$333,427	\$308,494	\$228,812
Northwest Community College District	\$969,970	\$1,238,378	\$800,969	\$1,084,534
Western Wyoming Community College	\$857,980	\$560,232	\$679,744	\$1,091,494
University of Wyoming**	**	**	**	**
<b>Grand Total</b>	<b>\$4,400,382</b>	<b>\$4,903,936</b>	<b>\$3,388,099</b>	<b>\$5,090,300</b>

Source: LSO review of Wyoming Community College Commission *Postsecondary Education Options Program* reports from FY2015 through FY2018.

\* The community college concurrent enrollment expenditures include student service expenses prorated by credit hour taken.

\*\*The University does not track expenditures by course.

**WYOMING LEGISLATIVE SERVICE OFFICE Memorandum**

## **Dual Enrollment**

According to the Commission,

Wyoming's public community colleges offer all freshman and sophomore college courses as options for school districts to select from as dual enrollment opportunities for high school students. Availability of a specific dual enrollment course is dependent upon access to the course through either face-to-face instruction or distance education. The decision to accept a specific college course to meet high school graduation requirements, is made by the school district.

Generally, these are classes taken by high school students at the college and are taught by college professors. Table 5 provides the number of students in dual enrollment. From FY2015 through FY2018, on average, students completed 88% of the dual enrollment courses taken at community colleges and University. Dual enrollment credit hours taken and completed for FY2015 to FY2018 can be found in Appendix A, Table 2.

**Table 5. Number of Dual Enrollment Students, FY2015 – FY2018.**

Post-Secondary Institution	FY2015	FY2016	FY2017	FY2018
Casper College	437	315	438	376
Central Wyoming College	174	152	151	241
Eastern Wyoming College	146	210	276	276
Laramie County Community College	180	261	381	384
Northwest College	158	191	212	306
Northwest Community College District	220	219	178	231
Western Wyoming Community College	717	700	908	579
University of Wyoming	19	20	25	51
<b>Grand Total</b>	<b>2,051</b>	<b>2,068</b>	<b>2,569</b>	<b>2,444</b>

Source: LSO summary of Wyoming Community College Commission *Postsecondary Education Options Program* reports from FY2015 through FY2018.

Tables 6 and 7 provide the dual enrollment revenues and expenditures, respectively for each community college. Appendix B, Table 2, contains additional data regarding what specific BOCES and BOCHES payments were made to support dual enrolled students.

**Table 6. Dual Enrollment Post-Secondary Institution Revenue, FY2015 – FY2018.**

Post-Secondary Institution	FY2015	FY2016	FY2017	FY2018
Casper College	\$399,874	\$267,085	\$323,135	\$370,272
Central Wyoming College	\$106,272	\$122,493	\$102,899	\$167,108
Eastern Wyoming College	\$37,005	\$47,459	\$113,633	\$174,930
Laramie County Community College	\$39,833	\$45,550	\$86,523	\$67,735
Northwest College	\$24,852	\$24,721	\$27,341	\$32,852
Northwest Community College District	\$95,461	\$93,140	\$71,941	\$70,289
Western Wyoming Community College	\$384,962	\$438,245	\$568,859	\$458,370
University of Wyoming	\$20,358	\$26,750	\$25,730	\$50,395
<b>Grand Total</b>	<b>\$1,108,617</b>	<b>\$1,065,443</b>	<b>\$1,320,061</b>	<b>\$1,391,951</b>

Source: LSO review of Wyoming Community College Commission *Postsecondary Education Options Program* reports from FY2015 through FY2018.

**Table 7. Dual Enrollment Post-Secondary Institution Expenditures, FY2015 – FY2018.\***

Post-Secondary Institution	FY2015	FY2016	FY2017	FY2018
Casper College	\$1,189,408	\$811,609	\$0	\$0

Post-Secondary Institution	FY2015	FY2016	FY2017	FY2018
Central Wyoming College	\$208,086	\$120,120	\$0	\$0
Eastern Wyoming College	\$171,500	\$308,264	\$421,715	\$533,854
Laramie County Community College	\$485,439	\$425,874	\$781,783	\$672,012
Northwest College	\$307,136	\$480,121	\$577,659	\$764,981
Northwest Community College District	\$474,325	\$490,744	\$436,973	\$539,627
Western Wyoming Community College	\$1,148,074	\$1,019,196	\$1,757,326	\$915,507
University of Wyoming**	**	**	**	\$50,395
<b>Grand Total</b>	<b>\$3,983,968</b>	<b>\$3,655,928</b>	<b>\$3,975,456</b>	<b>\$3,476,376</b>

Source: LSO summary of Wyoming Community College Commission *Postsecondary Education Options Program* reports from FY2015 through FY2018.

\* The community college concurrent enrollment expenditures include student service expenses prorated by credit hour taken.

\*\*The University does not track expenditures by course.

**Distance Dual Credit.** The University and community colleges offer course sections that are available as distance dual enrollment where instruction is provided through video classes or online. From FY2015 through FY2018, on average, students completed 85% of the courses taken. The number of students enrolled in these courses is as follows: FY2015: 917; FY2016: 1,073; FY2017: 1,304; and, FY2018: 1,281.

### III. Mill Levies

In general, Wyoming Statutes provide for counties to levy a maximum of 12.5 mills for community college operations and BOCHES plus any mill levies to satisfy bonds. The permissible mill levies are as follows:

- Community College Operations *Community College Board approved* 4 Mill <sup>1</sup>
- Additional Community College Operations *Community College Board approved* 1 Mill <sup>2</sup>
- Additional Community College Operations *Voter approved* 1-5 Mill <sup>3</sup>
- Board of Cooperative Educational Services *Community College Board Approved* 0.5 Mill <sup>4</sup>
- Board of Cooperative Educational Services *Voter approved* 0-2 Mill <sup>5</sup>
- **Total Maximum, excluding bond payments** 12.5 Mill

In 2018, seven counties (Fremont, Goshen, Laramie, Natrona, Park, Sheridan, and Sweetwater) imposed mill levies for community college operations. As shown in Table 8, the seven counties levied between 5 and 5.5 mills for community college operations and BOCHES.

**Table 8. Community College Operations and BOCHES Mill Levies by County, FY2015 – FY2018.** <sup>6</sup>

County	Values	FY2015	FY2016	FY2017	FY2018
Fremont	Valuation	\$916,766,870	\$672,842,756	\$630,956,774	\$662,818,833
	Mills levied	5.500	5.500	5.500	5.500
	Amount levied	\$5,042,217	\$3,700,635	\$3,470,262	\$3,645,503
Goshen	Valuation	\$178,816,995	\$195,670,472	\$191,562,523	\$189,258,843
	Mills levied	5.500	5.500	5.500	5.500
	Amount levied	\$983,493	\$1,076,187	\$1,053,594	\$1,040,923

<sup>1</sup> W.S. 21-18-304(a)

<sup>2</sup> W.S. 21-18-303(b)

<sup>3</sup> W.S. 21-18-311(f)

<sup>4</sup> W.S. 21-20-110(a)

<sup>5</sup> W.S. 21-20-110(h)

<sup>6</sup> This table does not include mill levies for community college bonds and interest. In FY2018, for example, Fremont, Goshen, Laramie, and Natrona Counties collected \$866,304; \$435,295; \$1,698,244; and \$2,300,788, respectively, for bond principle and interest payments.

County	Values	FY2015	FY2016	FY2017	FY2018
Laramie	Valuation	\$1,384,962,686	\$1,391,787,844	\$1,449,087,507	\$1,664,944,741
	Mills levied	5.000	5.000	5.000	5.000
	Amount levied	\$6,924,814	\$6,958,939	\$7,245,438	\$8,324,724
Natrona	Valuation	\$1,463,660,769	\$1,186,782,851	\$1,202,075,451	\$1,217,348,356
	Mills levied	5.500	5.500	5.500	5.500
	Amount levied	\$8,050,134	\$6,527,305	\$6,611,415	\$6,695,415
Park	Valuation	\$869,641,470	\$640,120,277	\$604,982,133	\$679,629,861
	Mills levied	5.000	5.000	5.000	5.000
	Amount levied	\$4,348,207	\$3,200,601	\$3,024,911	\$3,398,149
Sheridan	Valuation	\$422,627,851	\$401,749,408	\$403,445,289	\$420,225,258
	Mills levied	5.500	5.500	5.500	5.500
	Amount levied	\$2,324,453	\$2,209,622	\$2,218,949	\$2,311,239
Sweetwater	Valuation	\$2,961,509,848	\$2,298,069,644	\$2,153,513,159	\$2,344,680,978
	Mills levied	5.225	5.331	5.331	5.331
	Amount levied	\$15,473,889	\$12,251,010	\$11,480,379	\$12,499,494
<b>Total Amount Levied</b>		<b>\$43,147,207</b>	<b>\$35,924,299</b>	<b>\$35,104,948</b>	<b>\$37,915,447</b>

Source: LSO summary of Wyoming Board of Equalization and Department of Revenue data.

Note: The table provides the anticipated mill levies to be collected and do not represent the actual amounts received by a county.

## IV. University of Wyoming

**Enrollment.** The University offers a variety of degrees through academic programs which are provided through one of its seven colleges: Arts & Sciences, Agriculture & Natural Resources, Business, Education, Engineering & Applied Sciences, Law, Health Sciences as well as two Schools: School of Energy Resources and the Haub School of Environment and Natural Resources. According to the University, for FY2018 enrollment was 13,955. Table 9 provides University enrollment by degree type.

**Table 9. University of Wyoming Enrollment Data, FY2015 – FY2018.**

Type of Student	FY2015	FY2016	FY2017	FY2018
Undergraduate Certificate	47	53	58	63
<i>Resident Undergraduate Certificate</i>	<i>10</i>	<i>10</i>	<i>13</i>	<i>15</i>
Undergraduate Students	11,258	11,248	10,816	10,891
<i>Resident Undergraduate Students</i>	<i>7,513</i>	<i>7,450</i>	<i>7,134</i>	<i>7,167</i>
Graduate Certificate	97	128	163	162
<i>Resident Graduate Certificates</i>	<i>89</i>	<i>118</i>	<i>154</i>	<i>161</i>
Graduate Students	2,561	2,395	2,462	2,347
<i>Resident Graduate Students</i>	<i>2,163</i>	<i>2,003</i>	<i>2,101</i>	<i>1,963</i>
Professional	470	482	476	492
<i>Resident Professionals</i>	<i>326</i>	<i>316</i>	<i>313</i>	<i>322</i>
<b>Grand Total</b>	<b>14,433</b>	<b>14,306</b>	<b>13,975</b>	<b>13,955</b>
<b><i>Resident Grand Total</i></b>	<b><i>10,101</i></b>	<b><i>9,897</i></b>	<b><i>9,715</i></b>	<b><i>9,628</i></b>

Source: LSO summary of University of Wyoming data.

**Tuition and Fees.** Tuition and fees for the University from FY2015 through FY2020 can be found in Table 10. Tuition is charged on a per credit basis, and for FY2020 is \$139 for residents. In addition to tuition, the University collects various fees. For example, students are assessed mandatory fees, which is used to support, among other items, consolidated student services, recycling, student media, student

success programs, and transit. In FY2019, students began to pay a \$6 per credit hour advising fee and a \$3 to \$25 per credit hour program fee, depending on the program.

**Table 10. University Tuition and Fees, FY2015 – FY2020.**

Type of Student	FY2015	FY2016	FY2017	FY2018	FY2019	FY2020
Resident – Tuition	\$3,390	\$3,570	\$3,720	\$3,870	\$4,020	\$4,170
Fees	\$1,255	\$1,328	\$1,336	\$1,348	\$1,380	\$1,411
<b>Subtotal - Resident</b>	<b>\$4,646</b>	<b>\$4,892</b>	<b>\$5,055</b>	<b>\$5,217</b>	<b>\$5,400</b>	<b>\$5,581</b>
Non-resident - Tuition	\$13,620	\$14,310	\$14,880	\$15,480	\$16,110	\$16,740
Fees	\$1,256	\$1,322	\$1,335	\$1,347	\$1,380	\$1,411
<b>Subtotal - Non-resident</b>	<b>\$14,876</b>	<b>\$15,632</b>	<b>\$16,215</b>	<b>\$16,827</b>	<b>\$17,490</b>	<b>\$18,151</b>

Source: LSO summary of University of Wyoming data.

Note: Tuition and fees paid by a specific student will vary based on the actual credit hours enrolled and program.

**Historic Finance.** The University provided historic revenue data for FY2015 through FY2018. This information is summarized in Table 11.

**Table 11. University of Wyoming Operating Revenue, FY2015 – FY2018.**

Operating and Nonoperating Revenue	FY2015	FY2016	FY2017	FY2018
State Aid Appropriations	\$236,225,525	\$246,019,479	\$231,839,871	\$194,747,662
Federal Appropriations	\$4,233,947	\$4,080,686	\$5,097,822	\$9,429,233
Tuition and Fees	\$53,600,770	\$53,811,601	\$55,562,347	\$66,156,144
Federal Grants and Contracts	\$44,163,623	\$48,911,329	\$46,459,352	\$106,885,970
State Grants and Contracts	\$47,034,854	\$52,668,226	\$32,660,684	
Nongovernmental Grants and Contracts	\$5,791,808	\$7,919,926	\$7,935,583	
Private Gifts, Grants, and Contracts	\$38,366,013	\$41,190,521	\$40,794,288	\$33,853,216
Sales/Services – Education Activities	\$13,913,029	\$16,213,385	\$15,279,596	\$4,385,535
Sales/Services – Auxiliary Enterprise	\$46,780,007	\$46,799,071	\$45,056,475	\$46,162,099
Other Sources	\$65,350,523	\$59,046,910	\$83,479,062	\$61,620,148
<b>Total Revenue</b>	<b>\$555,460,099</b>	<b>\$576,661,134</b>	<b>\$564,165,080</b>	<b>\$523,240,007</b>

Source: LSO summary of University of Wyoming data.

## V. Wyoming Community College Commission

**Enrollment.** According to the Commission, in FY2018 the seven community colleges had a total credit hour headcount of 16,861 students. The community colleges offer a range of associate degrees and certification programs for those interested in academic, professional, and technical education. Table 12 provides student enrollment data by degree types; certificate program or associates degree.

**Table 12. Student Enrollment at Each Community College by Degree Type, FY2015 – FY2019.**

College	FY2015		FY2016		FY2017		FY2018		FY2019	
	AA	Cert	AA	Cert	AA	Cert	AA	Cert	AA	Cert
CC	2,751	257	2,845	353	2,915	330	2,829	314	2,829	357
CWC	1,501	250	1,419	269	1,305	194	1,182	186	1,179	201
EWC	773	172	754	198	725	171	679	206	631	238
LCCC	3,917	344	3,664	404	3,554	399	3,418	474	3,329	443
NWC	1,589	71	1,489	79	1,435	87	1,371	85	1,188	79
NWCCD	2,221	598	2,250	673	2,352	643	2,451	603	2,382	546
WWCC	2,584	353	2,415	326	2,550	387	2,657	406	2,094	366
<b>Total</b>	<b>15,336</b>	<b>2,045</b>	<b>14,836</b>	<b>2,302</b>	<b>14,836</b>	<b>2,211</b>	<b>14,587</b>	<b>2,274</b>	<b>13,632</b>	<b>2,230</b>

Source: LSO summary of Wyoming Community College Commission information.

Notes: A student who has an active program at any point during an academic year was included. Students enrolled in multiple programs are only counted once within each credential type. Many students are simultaneously enrolled in both an associate and certification program that are “stackable credentials.”

AA – Associate Degree; Cert – Certification; CC (Casper College); CWC (Central Wyoming College); LCCC (Laramie County Community College); NWC (Northwest College); NWCCD (Northern Wyoming Community College District); WYCC (Western Wyoming Community College); UW (University of Wyoming).

**Tuition and Fees.** The Commission establishes tuition rates for the seven community colleges, but fees are established by each college board of trustees. As a result, the total fees vary by institution.<sup>7</sup> Currently, for FY2020, the per credit hour tuition at all community colleges is \$99. Table 13 contains tuition for FY2015 through FY2020. The Commission memo to the Task Force, on page 4, provides historic tuition data from FY2004 through FY2020.

**Table 13. Tuition Community College Tuition, All Colleges, FY2015 – FY2020.**

Type of Student	FY2015	FY2016	FY2017	FY2018	FY2019	FY2020
Resident	\$996	\$996	\$1,068	\$1,128	\$1,128	\$1,485
Western Undergraduate Exchange (WUE) and Nebraska Resident	\$1,488	\$1,488	\$1,596	\$1,692	\$1,692	\$2,220
Non-Resident	\$2,988	\$2,988	\$3,204	\$3,384	\$3,384	\$4,455

Source: LSO summary of Wyoming Community College Commission information.

Note: The above figures are based on 12 hours or more a semester. Tuition and fees paid by a specific student will vary based on the actual credit hours enrolled and program.

**Historic Finance.** The Commission provided historic actual revenue received from various sources for each community college for FY2015 through FY2017. This information is summarized, for all community colleges, in Table 14. Information for each community college is available in the Commission Memo to the Task Force beginning on page 3.

**Table 14. Wyoming Community College Commission Operating Revenue, FY2015 – FY2018.**

Operating Revenue Source	FY2015	FY2016	FY2017	FY2018
State Aid Appropriations	\$117,985,036	\$120,275,329	\$112,557,919	\$110,224,837
Local Appropriations	\$45,693,491	\$47,560,011	\$40,587,472	\$39,082,917
Tuition and Fees	\$41,108,675	\$42,258,208	\$44,424,288	\$47,059,436
Federal Grants and Contracts	\$44,757,979	\$39,388,503	\$41,332,332	\$45,643,239
State Grants and Contracts	\$11,850,006	\$11,159,875	\$9,465,025	\$11,709,466
Local Grants and Contracts	\$4,790,578	\$5,197,006	\$4,730,105	\$3,863,600
Private Gifts, Grants, and Contracts	\$6,597,078	\$5,278,839	\$4,612,977	\$6,811,949
Endowment Income	\$25,787	\$34,420	\$0	\$24,541
Sales/Services – Education Activities	\$215,193	\$188,282	\$176,301	\$292,741
Sales/Services – Auxiliary Enterprise	\$20,728,004	\$21,645,815	\$22,970,957	\$22,345,709
Other Sources	\$3,183,523	\$3,195,476	\$2,076,606	\$3,096,084
<b>Total Revenue</b>	<b>\$296,935,350</b>	<b>\$296,181,764</b>	<b>\$282,933,982</b>	<b>\$290,154,519</b>

Source: Wyoming Community College Commission data.

\*FY2018 are revenue estimates rather than actual amounts.

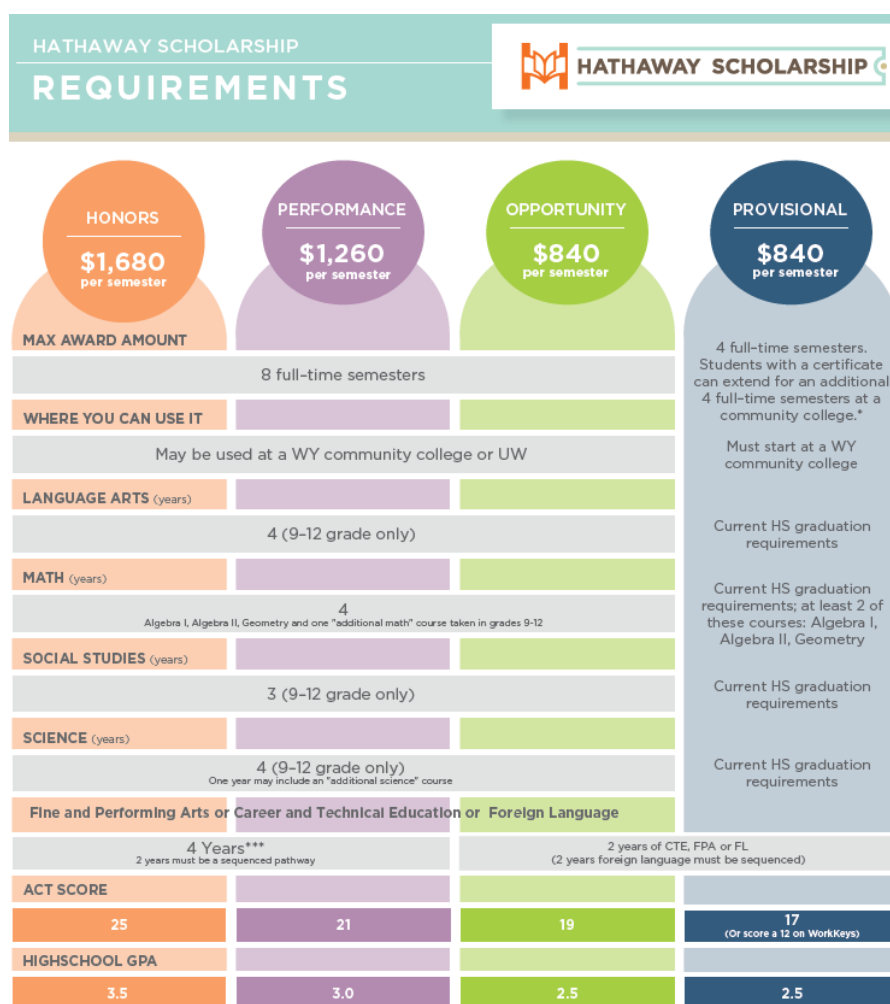
<sup>7</sup> For FY2017 the mandatory fees at each of the seven community colleges based on 24 credit hours per academic year is as follows: Casper College \$696; Central Wyoming College \$720; Eastern Wyoming College \$672; Laramie County Community College \$1,170; Northwest Community College District \$816; Northwest College \$1,102; Western Wyoming Community College \$440.

## VI. Hathaway Scholarship Program

The Legislature established a \$400 million permanent endowment for the Hathaway Scholarship Program (Hathaway) in 2006 Session Laws, Chapter 36 to assist Wyoming students prepare for and pursue post-secondary education at the University or one of Wyoming's seven community colleges. Every Wyoming high school student is eligible for one of four Hathaway scholarships if they meet certain eligibility requirements. The Hathaway has four merit-based scholarship, each with its own requirements as shown in Figure 3 as well as a need-based scholarship which can be used to supplement the merit-based scholarships. The requirements for the need-based scholarships are as follows:

- Need Based: Honors Scholarship Level – 100% of unmet financial aid exceeding \$2,000, i.e., the student must pay the first \$2,000 of unmet financial need.
- Need Based: Performance, Opportunity, and Provisional Opportunity Scholarship Levels – 25% or up to \$1,575 of unmet financial aid exceeding \$2,000 (minimum of \$105 per semester)

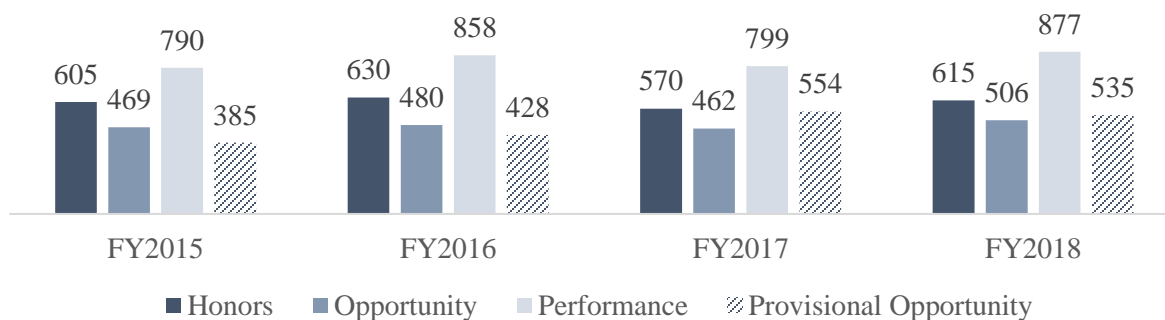
**Figure 3. Hathaway Scholarship Information and Requirements by Scholarship Type.**



Source: Wyoming Department of Education.

Figure 4 provides the number of students who initiated the Hathaway Scholarship Program during the selected year. Appendix 1, provides the same information by post-secondary institution. Table 15 contains the historic Hathaway Scholarship Payments to each post-secondary institution.

### WYOMING LEGISLATIVE SERVICE OFFICE *Memorandum*

**Figure 4. Historic Hathaway Enrollment, FY2015 – FY2018.**

Source: LSO summary of Wyoming Department of Education data.

**Table 15. Hathaway Scholarship Payments by Post-Secondary Institution, FY2015 – FY2018.**

Post-Secondary Institution	FY2015	FY2016	FY2017	FY2018
Casper College	\$1,314,890	\$1,348,833	\$1,335,403	\$1,366,173
Central Wyoming College	\$333,538	\$368,986	\$431,160	\$414,695
Eastern Wyoming College	\$288,661	\$241,869	\$259,021	\$292,633
Laramie County Community College	\$863,020	\$892,476	\$1,061,321	\$998,522
Northwest Community College District	\$1,001,876	\$948,312	\$1,007,704	\$1,163,119
Northwest College	\$598,512	\$585,717	\$734,985	\$775,861
Western Wyoming Community College	\$688,256	\$769,450	\$830,880	\$853,701
University of Wyoming	\$10,867,782	\$11,249,869	\$11,337,399	\$11,838,555
<b>Grand Total</b>	<b>\$15,956,535</b>	<b>\$16,405,512</b>	<b>\$16,997,873</b>	<b>\$17,703,259</b>

Source: LSO analysis in 19FS019 to Joint Education Interim Committee, May 2019.

### **Wyoming Works, recently adopted**

The Legislature created the Wyoming Works Program for community college students in **2019 Session Laws, Chapter 176** and appropriated \$5 million to the new program, of which \$3 million must be used for individual grants. The Wyoming Education Attainment Council will begin developing and implementing the new program during the summer of 2019. The program is designed to provide resources for adult students to obtain skills necessary to ensure employment in labor and economic development needs areas.

## **VII. Federal Aid**

There are several ways in which the federal government provides support for students to pursue post-secondary education or technical training, including through loans, grants, and work-study programs. The amount of funding provided to students varies by program, individual eligibility, availability of funds and, in some instances, institution participation.

### **Post-9/11 GI Bill Benefits**

Since the 1940s, the GI Bill, administered by the U.S. Department of Veterans Affairs (VA), has helped millions of veterans pay for college, graduate school, or complete training programs. Depending on the specific program, in addition to receiving funds for tuition and fees, veterans may also be eligible to receive assistance for items such as books and housing.

Using available data, this section focuses on the Post-9/11 GI Bill Benefits.<sup>8</sup> A summary of the **Post-9/11 GI Bill Tuition and Fee Payment Rates for the 2018 Academic Year (August 1, 2018 - July 31, 2019)** are as follows:

- ***Institutions of Higher Learning:***
  - Public School: All tuition and fee payments for an in-state student<sup>9</sup>
  - Private or Foreign School: Up to \$23,671.94 per academic year
- ***Non-college degree granting institutions***
  - Actual net cost for in-state tuition and fees, not to exceed \$23,671.94 per academic year
- ***Apprenticeship and On-the-job Training***
  - Based on duration and veteran's monthly housing allowance<sup>10</sup>
    - First six months - 100% of housing allowance
    - Second six months - 80% of housing allowance
    - Third six months - 60% of housing allowance
    - Fourth six months - 40% of housing allowance
    - Remaining 20% of housing allowance
- ***Vocational Flight Schools***
  - Actual net costs not to exceed \$13,526.81 per academic year
- ***Correspondence Schools***
  - Actual net costs not to exceed \$11,497.78 per academic year
- ***National Testing Programs/Licensing & Certification Test***
  - Charges against an individual's entitlement for payment are pro-rated based on the actual amount of the fee charged for the test relative to the rate for one month

Beginning in 2018, the VA began to publish its GI Bill payments to individual institutions, which includes **historic data for FY2009 to FY2017**. According to VA data, from FY2015 through FY2017, there were 25 public and private institutions in Wyoming that received a total of \$15.4 million in GI Bill payments. Table 16 contains the total GI Bill payments to Wyoming institutions by type and Appendix D contains institution specific details.

**Table 16. GI Bill Tuition and Fee Payments to Wyoming Institutions, FY2015 – FY2017.**

Institution Type	FY2015		FY2016		FY2017	
	Amount	Recipients	Amount	Recipients	Amount	Recipients
Public	\$1,648,214	596	\$1,883,434	691	\$1,904,447	692
Private non-profit	\$1,516,013	192	\$2,739,042	231	\$2,092,536	188
Private profit	\$2,872,153	239	\$489,908	63	\$276,068	38
<b>Grand Total</b>	<b>\$6,036,381</b>	<b>1,027</b>	<b>\$5,112,384</b>	<b>985</b>	<b>\$4,273,051</b>	<b>918</b>

Source: LSO analysis of U.S. Department of Veterans Affairs data.

<sup>8</sup> As cost of attendance may exceed the GI Bill, veterans may also be eligible for additional assistance under the Yellow Ribbon program, if the institution has elected to participate.

<sup>9</sup> A veteran may qualify for in-state tuition rates if he or she lives in the state where the institution is located, regardless of formal state of residence. Each institution has some flexibility in decisions regarding tuition rates.

<sup>10</sup> If a veteran is eligible for a monthly housing allowance it is calculated similarly to the military Basic Allowance for Housing and is based on the zip code for the school.

## **Federal Pell Grant**

**Federal Pell Grants**, administered by the U.S. Department of Education (U.S. DOE), provides financial assistance through grants to undergraduate students who “display exceptional financial need and have not earned a bachelor’s, graduate or professional degree.”<sup>11</sup> The Federal Pell Grant has a lifetime eligibility limit of 12 semesters, or the equivalent. Award amounts vary yearly. The maximum Federal Pell Grant award a student could receive are as follows:

- Award Year 2014-2015 (FY2015) – \$5,890
- Award Year 2015-2016 (FY2016) – \$5,920
- Award Year 2016-2017 (FY2017) – \$5,920
- Award Year 2017-2018 (FY2018) – \$5,920
- Award Year 2018-2019 (FY2019) – \$6,095
- Award Year 2019-2020 (FY2020) – \$6,195

Table 17, provides the total **Federal Pell Grants to institutions in Wyoming for FY2015 through FY2017**, by institution type and Appendix E contains details by institution.

**Table 17. Pell Grant Program Funds by Institution Type, Wyoming, FY2015 – FY2017.**

Institution Type	FY2015		FY2016		FY2017	
	Amount	Recipients	Amount	Recipients	Amount	Recipients
Private 2 Year	\$4,459,570	1,308	\$2,528,004	770	\$2,728,868	800
Proprietary 2 Year	\$479,156	139	\$414,994	121	\$313,594	91
Public 2 Year	\$16,613,197	4,751	\$16,014,200	4,528	\$16,458,185	4,640
Public 4 Year	\$9,810,050	2,479	\$8,931,924	2,290	\$8,561,044	2,169
<b>Grand Total</b>	<b>\$31,361,973</b>	<b>8,677</b>	<b>\$27,889,122</b>	<b>7,709</b>	<b>\$28,061,691</b>	<b>7,700</b>

Source: LSO analysis of [U.S. Department of Education data](#).

## **Other Federal Grants**

The federal government offers other opportunities, aside from those described above, that provide financial assistance to students based on specific areas of need or eligibility type. One example of these types of opportunities for which Wyoming participates at the state level data is the Federal Teacher Education Assistance for College and Higher Education (**TEACH**) Grant. The TEACH Grant provides up to \$4,000 a year to eligible students who agree to meet certain requirements during their education that will affect their career, e.g., pursue a degree in a “high-need field” or “serves students from low-income families”. In Wyoming, only the University has received funds from this federal grant program, as follows:

- FY2015: 2 recipients for a total distribution of \$5,947
- FY2016: 4 recipients for a total distribution of \$12,988
- FY2017: 5 recipients for a total distribution of \$9,312
- FY2018: 5 recipients for a total distribution of \$9,498

Please note that the grant program described above only serves as an example of other federal programs that may exist including grants, loans, tax credits, and loan repayment programs.

<sup>11</sup> Institutions can choose to participate in the **Federal Supplemental Education Opportunity Grant (FSEOG)**, which provides up to \$4,000 additional financial aid to undergraduate students who have an exceptional financial need. Federal Pell Grant recipients receive priority. In Wyoming, all eight public institutions participate.

### Federal Student Loans <sup>12</sup>

For additional context, basic student loan information is included as it influences how students choose to pay for higher education. The current Federal Student Loan program has three components:

- Direct Subsidized Loans are available to eligible undergraduate students who have a demonstrated financial need to help cover costs of higher education at a college or career school.
- Direct Unsubsidized Loans are available to eligible undergraduate, graduate, and professional students and is not financial needs based.
- Direct PLUS Loans that are made to graduate or professional students and parents of dependent undergraduate students and is personal credit based. <sup>13</sup>

Institution and state specific Federal Student Loan data and information is publicly available. Table 18 provides the total Federal Student Loan for **institutions in Wyoming for FY2015 through FY2018**, by loan and school type and Appendix F contains details by institution.

**Table 18. Total Federal Student Loans in Wyoming by Type, FY2015 – FY2018.**

FY	Institution Type	Subsidized (Undergraduates)		Unsubsidized (Undergraduate)		Unsubsidized (Graduate)*	
		Amount	Recipients	Amount	Recipients	Amount	Recipients
2015	Private-Nonprofit	\$3,536,738	1,395	\$4,500,473	1,436	\$0	0
	Proprietary	\$344,062	118	\$211,350	78	\$0	0
	Public	\$19,475,778	5,669	\$23,753,089	5,808	\$10,190,878	623
2016	Private-Nonprofit	\$2,268,547	824	\$3,256,494	875	\$0	0
	Proprietary	\$242,693	104	\$130,157	64	\$0	0
	Public	\$18,040,104	5,233	\$22,793,015	5,559	\$10,211,572	625
2017	Private-Nonprofit	\$2,346,404	852	\$3,147,589	883	\$0	0
	Proprietary	\$223,042	86	\$123,430	56	\$0	0
	Public	\$18,486,270	5,391	\$23,551,233	5,713	\$10,810,861	642
2018	Private-Nonprofit	\$1,403,686	511	\$1,807,567	544	\$0	0
	Proprietary	\$237,438	87	\$188,700	70	\$0	0
	Public	\$18,322,418	5,286	\$23,205,469	5,671	\$11,710,988	672
<b>Grand Total</b>		<b>\$84,927,180</b>	<b>25,556</b>	<b>\$106,668,566</b>	<b>26,757</b>	<b>\$42,924,299</b>	<b>2,562</b>

Source: LSO summary of U.S. Department of Education data.

Note: The Private-Nonprofit institution is WyoTech; the Proprietary school is Cheeks International Academy of Beauty Culture in Cheyenne; and the Public institution are the University and seven community colleges.

\*The University of Wyoming is the only institution that offered Unsubsidized Graduate Federal Student Loans.

<sup>12</sup> The authority to make new Federal Perkins Loan Program ended September 30, 2017.

<sup>13</sup> For the purposes of this memo, the Direct PLUS Loans were described, but excluded from the data reviewed because the loans are made to *graduate or professional* students or the *parents* of an undergraduate student.

## Appendix A

**Table 1. Concurrent Enrollment Number of Credit Hours Taken and Completed by Post-Secondary Institution, FY2015 to FY2018.**

Post-Secondary Institution	FY2015		FY2016		FY2017		FY2018	
	Credit Hours Taken	Credit Hours Completed	Credit Hours Taken	Credit Hours Completed	Credit Hours Taken	Credit Hours Completed	Credit Hours Taken	Credit Hours Completed
CC	3,392	2,981	2,780	2,475	2,027	1,827	2,254	2,028
CWC	5,173	5,055	6,173	5,988	4,490	4,321	4,255	3,959
EWC	8,722	8,425	8,541	8,334	7,256	7,096	6,658	6,431
LCCC	2,911	2,391	2,768	2,381	3,324	2,666	6,474	4,170
NWC	1,623	1,558	1,967	1,878	1,610	1,563	1,237	1,191
NWCCD	7,775	6,879	8,013	7,274	7,000	6,490	7,036	6,732
WWCC	4,073	3,987	3,904	3,777	4,546	4,392	4,487	4,355
UW	80	80	88	88	0	0	0	0
<b>Grand Total</b>	<b>33,749</b>	<b>31,356</b>	<b>34,234</b>	<b>32,195</b>	<b>30,253</b>	<b>28,355</b>	<b>32,401</b>	<b>28,866</b>

Source: LSO summary of Wyoming Community College Commission *Postsecondary Education Options Program* reports from 2015 through 2018.

**Table 2. Dual Enrollment Number of Credit Hours Taken and Completed by Post-Secondary Institution, FY2015 to FY2018.**

Post-Secondary Institution	FY2015		FY2016		FY2017		FY2018	
	Credit Hours Taken	Credit Hours Completed	Credit Hours Taken	Credit Hours Completed	Credit Hours Taken	Credit Hours Completed	Credit Hours Taken	Credit Hours Completed
CC	3,632	2,632	2,431	1,925	2,631	2,104	2,710	2,193
CWC	860	743	990	862	873	787	1,319	1,156
EWC	808	718	1,043	967	1,437	1,357	1,512	1,466
LCCC	1,270	1,057	1,137	985	2,140	1,884	1,936	1,685
NWC	787	652	1,209	1,067	1,453	1,312	2,015	1,777
NWCCD	1,563	1,313	1,639	1,337	1,410	1,283	1,774	1,641
WWCC	3,469	3,057	4,140	3,680	4,962	4,444	2,384	2,103
UW	121	121	132	128	130	127	260	257
<b>Grand Total</b>	<b>12,509</b>	<b>10,293</b>	<b>12,720</b>	<b>10,950</b>	<b>15,036</b>	<b>13,298</b>	<b>13,909</b>	<b>12,277</b>

Source: LSO summary of Wyoming Community College Commission *Postsecondary Education Options Program* reports from 2015 through 2018.

## Appendix B

BOCES and BOCHES provide payments to support concurrent and dual enrolled students to community colleges, the school districts, and others, as shown in Table 1 and Table 2.

**Table 1. Concurrently Enrolled Payments to Specific Entities, FY2015 through FY2018.**

BOCES/BOCHES	Total Payments To	FY2015	FY2016	FY2017	FY2018
<b>Big Horn County School District #3</b>	Community College				
	School District				
	Vendor or Employee				\$3,500
<b>Carbon County School District #2</b>	Community College	\$6,262	\$11,567	\$13,644	
	School District				
	Vendor or Employee		\$4,229	\$5,588	
<b>Central Wyoming BOCES</b>	Community College	\$356,616	\$292,050	\$235,460	\$255,208
	School District				\$255,208
	Vendor or Employee	\$38,737	\$33,857	\$31,786	\$34,038
<b>Central Wyoming College BOCHES</b>	Community College	\$129,000	\$129,000	\$129,000	\$129,000
	School District				
	Vendor or Employee	\$65,991	\$177,928	\$160,345	\$184,209
<b>Eastern Wyoming BOCES</b>	Community College				
	School District				
	Vendor or Employee	\$526,589	\$322,780	\$379,107	\$538,390
<b>Eastern Wyoming College Extended BOCES</b>	Community College				
	School District				
	Vendor or Employee	\$39,874			
<b>Oyster Ridge BOCES</b>	Community College				
	School District				
	Vendor or Employee		\$13,930		
<b>Sublette BOCES</b>	Community College	\$33,912	\$14,940		
	School District				
	Vendor or Employee		\$3,561	\$419	
<b>Uinta BOCES #1</b>	Community College	\$6,090		\$2,612	
	School District		\$1,500		
	Vendor or Employee	\$13,908	\$7,165	\$6,831	
<b>Uinta County BOCES SD #4 and #6 (Valley Learning Center)</b>	Community College				
	School District		\$2,099		
	Vendor or Employee				
<b>Western Sublette 9 BOCES</b>	Community College				
	School District		\$25,845		
	Vendor or Employee				\$8,703

Source: LSO summary of Wyoming Community College Commission *Postsecondary Education Options Program* reports from 2015 through 2018.

Note: The following BOCES/BOCHES either did not report or did not make payments for concurrently enrolled students from FY2014 through FY2018: Carbon County Higher Education Center; Fremont County BOCES; Gillette BOCHES; Lovell BOCES (Big Horn City School District #2); Park County School District #1; Sweetwater BOCES; and, Teton County BOCES.

**Table 2. Dual Enrolled Payments to Specific Entities, FY2015 through FY2018.**

<b>BOCES/BOCHES</b>	<b>Total Payments To</b>	<b>FY2015</b>	<b>FY2016</b>	<b>FY2017</b>	<b>FY2018</b>
<b>Big Horn County School District #3</b>	Community College				\$9,539
	School District				
	Vendor or Employee				\$1,802
<b>Carbon County Higher Education Center</b>	Community College	\$38,554	\$46,169	\$79,560	\$33,979
	School District		\$46,169		
	Vendor or Employee	\$225		\$64,390	\$48,111
<b>Carbon County School District #2</b>	Community College	\$22,561	\$40,661	\$42,093	\$106,238
	School District				
	Vendor or Employee	\$17,341	\$16,630	\$13,390	\$106,948
<b>Central Wyoming BOCES</b>	Community College	\$361,572	\$211,888	\$271,159	\$306,977
	School District				\$306,977
	Vendor or Employee	\$139,641	\$95,954	\$112,065	\$113,249
<b>Central Wyoming College BOCHES</b>	Community College	\$106,272	\$120,120	\$102,899	\$167,108
	School District				
	Vendor or Employee	\$35,361	\$34,759	\$13,555	\$20,943
	School District				
	Vendor or Employee				
<b>Gillette BOCHES</b>	Community College	\$88,091	\$94,046	\$69,533	
	School District				\$70,288
	Vendor or Employee				\$70,288
<b>Lovell BOCES (Big Horn City School District #2)</b>	Community College	\$618		\$1,816	\$3,919
	School District				
	Vendor or Employee			\$4,408	\$6,049
<b>Oyster Ridge BOCES</b>	Community College	\$18,210	\$8,627	\$14,943	\$15,375
	School District			\$14,943	\$15,375
	Vendor or Employee			\$34,685	\$37,471
<b>Sublette BOCES</b>	Community College	\$36,870	\$44,014	\$39,638	
	School District	\$70,782			
	Vendor or Employee	\$22,826	\$39,790	\$48,222	
<b>Uinta BOCES #1</b>	Community College	\$5,311	\$6,738	\$8,961	\$21,872
	School District				
	Vendor or Employee				
<b>Uinta County BOCES SD #4 and #6 (Valley Learning Center)</b>	Community College				
	School District	\$8,744	\$9,930	\$7,000	\$9,000
	Vendor or Employee				
<b>Western Sublette 9 BOCES</b>	Community College	\$526	\$364		\$13,629
	School District	\$42,090		\$38,551	
	Vendor or Employee				

Source: LSO summary of Wyoming Community College Commission *Postsecondary Education Options Program* reports from 2015 through 2018.

Note: The following BOCES/BOCHES either did not report or make payments for concurrently enrolled students from FY2014 through FY2018: Eastern Wyoming BOCES; Eastern Wyoming College Extended BOCES; Fremont County BOCES; Park County School District #1; Sweetwater BOCES; and, Teton County BOCES.

**WYOMING LEGISLATIVE SERVICE OFFICE *Memorandum***

## Appendix C

**Table 1. Hathaway Historic Data by Post-Secondary Institution, FY2015 to FY2018.**

Scholarship Type	Institution FY	CC	CWC	EWC	LCCC	NWCCD	NC	WWCC	UW	Grand Total
<b>Provisional Opportunity</b>	<b>FY2015</b>	84	28	24	55	71	57	63	3	<b>385</b>
	<b>FY2016</b>	120	34	22	45	75	45	87	0	<b>428</b>
	<b>FY2017</b>	119	47	40	74	97	86	90	1	<b>554</b>
	<b>FY2018</b>	119	34	45	62	118	70	87	0	<b>535</b>
<b>Opportunity</b>	<b>FY2015</b>	95	25	18	53	55	39	33	151	<b>469</b>
	<b>FY2016</b>	80	23	19	69	54	32	53	150	<b>480</b>
	<b>FY2017</b>	64	32	19	88	59	28	45	127	<b>462</b>
	<b>FY2018</b>	80	25	19	59	69	34	71	149	<b>506</b>
<b>Performance</b>	<b>FY2015</b>	133	23	25	86	92	48	67	316	<b>790</b>
	<b>FY2016</b>	123	47	29	95	91	53	90	330	<b>858</b>
	<b>FY2017</b>	118	42	21	86	77	76	63	316	<b>799</b>
	<b>FY2018</b>	121	36	24	98	90	68	93	347	<b>877</b>
<b>Honors</b>	<b>FY2015</b>	38	15	11	28	31	30	37	415	<b>605</b>
	<b>FY2016</b>	46	15	6	25	46	31	31	430	<b>630</b>
	<b>FY2017</b>	50	14	9	30	50	36	32	349	<b>570</b>
	<b>FY2018</b>	54	20	10	20	44	32	28	407	<b>615</b>

Source: LSO summary Wyoming Department of Education data.

Note: CC (Casper College); CWC (Central Wyoming College); LCCC (Laramie County Community College); NWC (Northwest College); NWCCD (Northern Wyoming Community College District); WWCC (Western Wyoming Community College); UW (University of Wyoming).

## Appendix D

**Table 2. Total GI Bill Tuition and Fees Payments to Wyoming Post-Secondary Institution, FY2015 to FY2018.**

Institution and Profit Status		FY2015		FY2016		FY2017	
		Amount	Recipient	Amount	Recipient	Amount	Recipient
Casper College	Public	\$83,654	48	\$131,988	73	\$166,319	82
Central Wyoming College	Public	\$52,208	20	\$54,520	23	\$53,878	19
Eastern Wyoming College	Public	\$13,825	8	\$20,130	12	\$23,059	12
Laramie County Community College	Public	\$295,732	158	\$346,831	177	\$483,943	180
Northwest College	Public	\$174,636	37	\$181,563	44	\$84,507	36
Sheridan College	Public	\$138,491	62	\$158,979	74	\$168,652	77
Wester Wyoming Community College	Public	\$34,057	25	\$61,778	36	\$59,818	40
University of Wyoming	Public	\$855,611	238	\$927,646	252	\$864,272	246
Cheeks International Academy of Beauty Culture-Cheyenne	Private profit	\$41,480	3	\$56,598	4	\$0	0
Choice Aviation	Private profit	\$0	0	\$7,604	1	\$20,275	2
IBMC College	Private profit	\$400,804	43	\$297,027	32	\$210,289	24
Rocky Mountain Academy of Hair Skin and Nails	Private profit	\$0	0	\$10,123	1	\$0	0
Sage Technical Services - Casper	Private profit	\$13,785	3	\$24,992	6	\$11,947	3
Sage Technical Services - Cheyenne	Private profit	\$48,248	10	\$44,687	11	\$9,739	3
Wings of Wyoming	Private profit	\$368	1	\$12,819	3	\$18,568	5
Wyoming Contractors Assoc. Regional Training Ctr.	Private profit	\$4,250	1	\$10,625	3	\$5,250	1
Wyoming Welding Tech	Private profit	\$0	0	\$21,085	1	\$0	0
WyoTech-Laramie	Private profit	\$2,363,219	178	\$4,350	1	\$0	0
WyoTech-Laramie	Private non-profit	\$960,604	89	\$2,211,133	144	\$1,602,428	104
College America - Cheyenne	Private non-profit	\$93,258	8	\$137,259	9	\$65,620	9
Embry-Riddle Aeronautical University - Worldwide	Private non-profit	\$24,039	9	\$0	0	\$0	0
National Outdoor Leadership School	Private non-profit	\$276,321	48	\$179,947	35	\$212,326	24
Park University	Private non-profit	\$48,604	15	\$72,693	18	\$88,975	24
Wilderness Medicine Institution	Private non-profit	\$44,874	18	\$55,645	20	\$50,437	23
Wyoming Catholic College	Private non-profit	\$68,312	5	\$82,365	5	\$72,750	4
<b>Grand Total</b>		<b>\$6,036,381</b>	<b>1,027</b>	<b>\$5,112,384</b>	<b>985</b>	<b>\$4,273,051</b>	<b>918</b>

Source: LSO summary of U.S. Department of Veterans Affairs data.

## Appendix E

**Table 2. Summary of Total Pell Grant Program Funds to Wyoming Post-Secondary Institution, FY2015 to FY2018.**

Institution and Profit Status		2015		2016		2017	
		Amount	Recipients	Amount	Recipients	Amount	Recipients
Casper College	Public 2 Year	\$2,959,004	843	\$2,719,638	776	\$3,158,869	880
Central Wyoming College	Public 2 Year	\$1,285,838	366	\$1,295,262	353	\$1,471,556	409
Eastern Wyoming College	Public 2 Year	\$1,011,818	295	\$837,388	228	\$820,543	220
Laramie County Community College	Public 2 Year	\$4,589,411	1,367	\$4,534,983	1,315	\$4,133,502	1,221
Northwest College	Public 2 Year	\$1,894,019	495	\$1,754,490	460	\$1,763,066	470
Sheridan College	Public 2 Year	\$2,564,659	711	\$2,700,098	772	\$2,896,746	830
Western Wyoming Community College	Public 2 Year	\$2,308,448	674	\$2,172,341	624	\$2,213,903	610
University of Wyoming	Public 4 Year	\$9,810,050	2,479	\$8,931,924	2,290	\$8,561,044	2,169
Cheeks International Academy	Proprietary 2 Year	\$479,156	139	\$414,994	121	\$313,594	91
WyoTech	Private 2 Year	\$4,459,570	1,308	\$2,528,004	770	\$2,728,868	800
<b>Grand Total</b>		<b>\$31,361,973</b>	<b>8,677</b>	<b>\$27,889,122</b>	<b>7,709</b>	<b>\$28,061,691</b>	<b>7,700</b>

Source: LSO summary of U.S. Department of Education data.

## Appendix F

**Table 2. Total Federal Student Loans to Undergraduates at Wyoming Post-Secondary Institution, FY2015 to FY2018.**

Post-Secondary Institution	FY	Subsidized		Unsubsidized	
		Amount	Recipients	Amount	Recipients
Casper College	FY2015	\$1,200,723	399	\$1,369,199	412
	FY2016	\$1,075,914	374	\$1,295,065	401
	FY2017	\$1,308,436	447	\$1,595,871	455
	FY2018	\$1,486,937	509	\$2,097,484	539
Central Wyoming College	FY2015	\$352,664	128	\$498,544	137
	FY2016	\$340,733	126	\$522,736	134
	FY2017	\$525,665	191	\$601,568	168
	FY2018	\$654,729	228	\$655,781	187
Eastern Wyoming College	FY2015	\$358,735	126	\$252,122	88
	FY2016	\$291,988	93	\$246,266	80
	FY2017	\$315,302	108	\$303,460	96
	FY2018	\$223,544	83	\$319,978	98
Laramie County Community College	FY2015	\$3,193,786	1,025	\$3,632,696	963
	FY2016	\$2,800,531	882	\$3,458,206	880
	FY2017	\$2,707,627	871	\$3,708,437	897
	FY2018	\$2,300,376	767	\$3,079,720	764
Northern Wyoming Community College District	FY2015	\$1,249,782	462	\$1,658,046	465
	FY2016	\$1,142,871	443	\$1,470,956	454
	FY2017	\$1,469,676	534	\$1,997,536	540
	FY2018	\$1,477,296	541	\$1,908,787	539
Northwest College	FY2015	\$872,434	268	\$1,014,101	279
	FY2016	\$704,766	241	\$886,286	254
	FY2017	\$738,471	248	\$995,768	285
	FY2018	\$666,479	232	\$954,052	269
Western Wyoming Community College	FY2015	\$1,168,758	379	\$731,693	234
	FY2016	\$1,103,131	344	\$865,010	239
	FY2017	\$1,036,156	310	\$818,901	222
	FY2018	\$1,166,305	320	\$797,776	205
University of Wyoming*	FY2015	\$11,078,896	2,882	\$14,596,688	3,230
	FY2016	\$10,580,170	2,730	\$14,048,490	3,117
	FY2017	\$10,384,937	2,682	\$13,529,692	3,050
	FY2018	\$10,346,752	2,606	\$13,391,891	3,070
Cheeks International Academy of Beauty Culture	FY2015	\$344,062	118	\$211,350	78
	FY2016	\$242,693	104	\$130,157	64
	FY2017	\$223,042	86	\$123,430	56
	FY2018	\$237,438	87	\$188,700	70
WyoTech	FY2015	\$3,536,738	1,395	\$4,500,473	1,436
	FY2016	\$2,268,547	824	\$3,256,494	875
	FY2017	\$2,346,404	852	\$3,147,589	883
	FY2018	\$1,403,686	511	\$1,807,567	544
<b>Grand Total</b>		<b>\$84,927,180</b>	<b>25,556</b>	<b>\$106,668,566</b>	<b>26,757</b>

Source: LSO summary of U.S. Department of Education data.