

# Westwinds Interchange Project

Bar Nunn, WY  
October, 2018



Wyoming Department of  
Transportation



# Wyoming Department of Transportation

## Westwinds Road Interchange

### Background

The Westwinds Road interchange is currently being constructed north of Bar Nunn at the intersection of Westwinds Road and Interstate 25. This interchange will create a second access to the town and is the first phase of a larger project that may ultimately extend Westwinds Road to link the Casper Logistics Hub (CLH) and the Casper-Natrona County International Airport (C/NCIA) to I-25.

This interchange is a collaborative effort and includes a diverse group of project partners and funding, which include the following:

- Bar Nunn: \$1 million
- Natrona County: \$1 million
- Casper Area MPO: \$7 million
- SLIB funds: \$1 million
- WYDOT: \$2 million
- **Total Project Cost: \$12 million**

### Project Benefits

To save time, materials, and ultimately expenses, as much of the existing infrastructure, pavement, and other appurtenances as possible are being reused in the construction of the two new on-ramps and two new off-ramps. The I-25 bridges that carry the interstate traffic were in good condition and the only work required to them were modifications to the slopes beneath the bridges. A 54 inch barrier rail was installed. It serves as a retaining wall as Westwinds Road needed to be lowered to provide the necessary clearance beneath the structures. Also, this railing serves as a retaining wall because the slopes beneath the bridge needed to be modified to accommodate the lowered and slightly wider travelled way of Westwinds Road. Making these modifications resulted in a substantial saving should the bridges have been replaced. The resulting savings, an increase in overall safety, enhanced economic development, and enhanced mobility will be realized.

#### *Enhanced Economic Development*

The interchange will also boost economic development in the Casper and Bar Nunn area by:

- Improving access to Bar Nunn and its businesses for pass-through traffic as well as traffic taking shelter during interstate closures.
- Providing infrastructure that welcomes further development and complements the existing economic developments, like the Bar Nunn Industrial Park and the BNSF railroad spur.
- Establishing a foundation for enhanced transmodal connectivity that will save time and freight costs through linking CLH, C/NCIA, the BNSF rail line, and the I-25 freight corridor.

#### *Increased Mobility*

As the fastest growing community in the state, Bar Nunn needs this new infrastructure to accommodate increased traffic and encourage more growth by:

- Offering freight movement, local traffic, and passersby more efficient access to and from the town, its growing industries, and the surrounding areas (for expansion purposes).
- Creating the base infrastructure for the Westwinds bypass that will result in a more direct route between CLH, C/NCIA, and Bar Nunn, decreasing out-of-direction travel between CLH and I-25 by approximately 9 miles—currently the best route from CLH to I-25 is about 10 miles using the Shoshoni interchange.

### *Safety*

This interchange will also improve safety by:

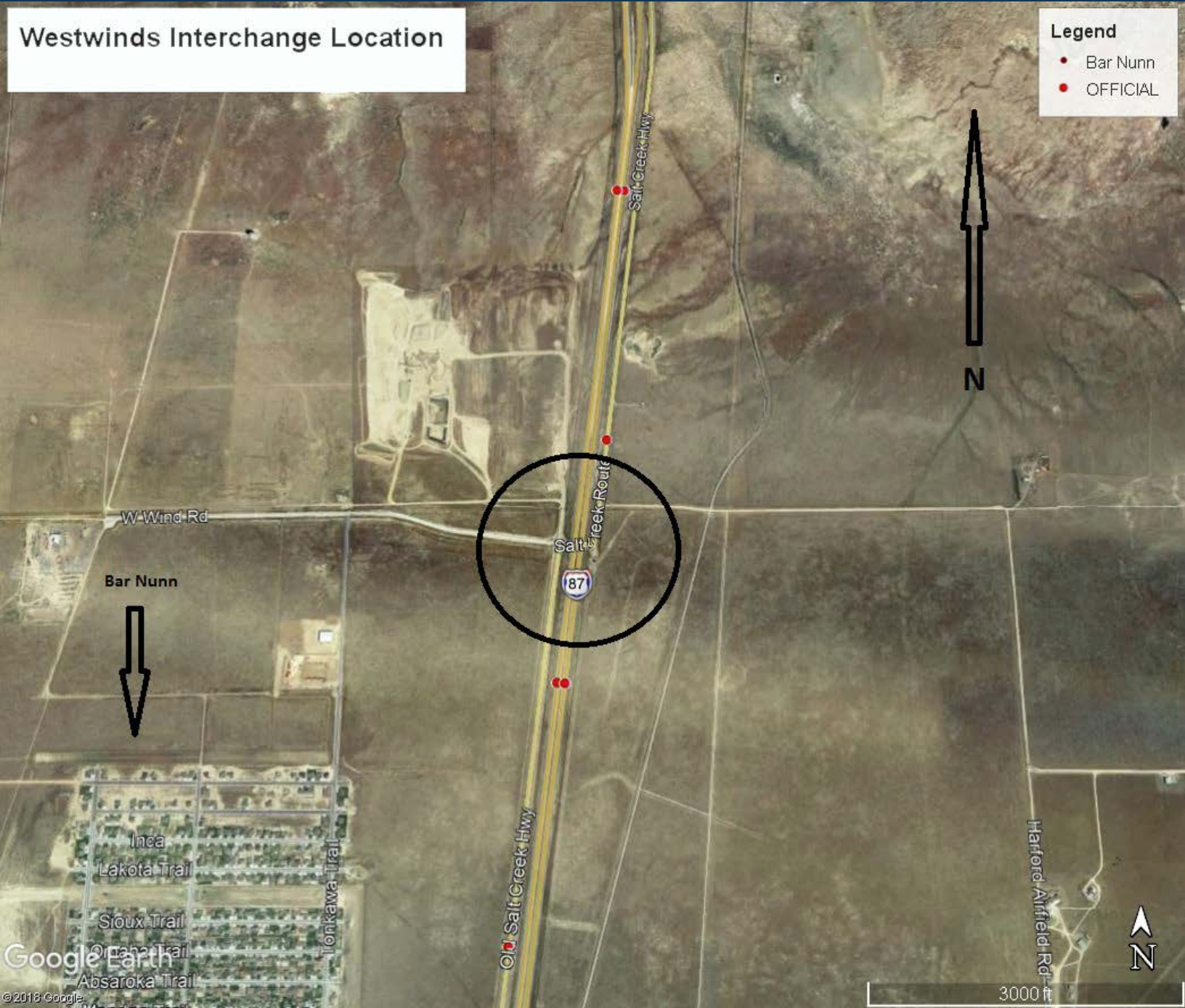
- Mitigating closure-related congestion on I-25 as traffic can safely exit the interstate to wait in Bar Nunn for the interstate to reopen.
- Offering better interstate access in cases of in-town congestion due to emergencies, like the 2015 wildfire evacuation, sparing local roads from the burden of additional traffic.
- Allowing more direct access to town for emergency vehicles traveling from the Wyoming Medical Center, so they can reach emergency sites in less than 10 minutes.

The Transportation Commission awarded 71 Construction the \$6.8 million contract to build the new interchange with minor modifications to the I-25 bridge slopes, Westwinds Road and the Old Salt Creek Highway. The interchange is slated for completion by mid-2019 when the project's many merits can be realized.

Modernization efforts such as these are an important aspect in the enhancement of our transportation facilities and at the same time, these serve to bolster the economy of the state by providing much need improvements to the infrastructure.

# Westwinds Interchange Location

Westwinds Interchange Location

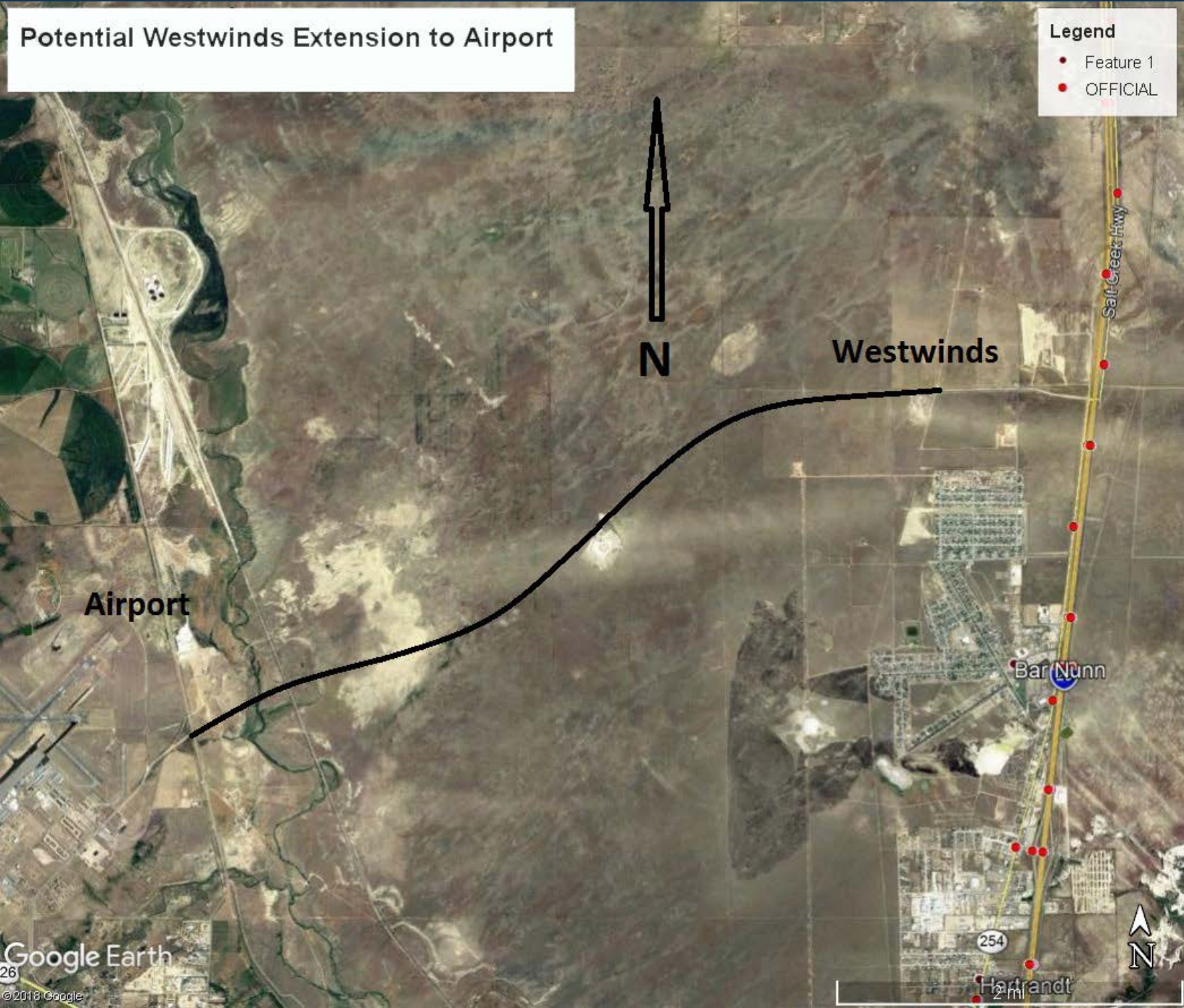


# Potential Westwinds Extension to Airport

Potential Westwinds Extension to Airport

**Legend**

- Feature 1
- OFFICIAL



STATE OF WYOMING  
 PROJECT NO. 1254156  
 SHEET NO. 4  
 OF 83

LOCATION MAP



October, 2018



Page 5

K:\C:\pww\wydot\20180205\shereff18\_1254156\_1.mxd 10/17/18



**Above: Southbound off ramp.  
Below: Southbound on ramp.**





**Above: Northbound off ramp.**

**Below: Northbound on ramp.**





**Above: Salt Creek Highway northbound.**

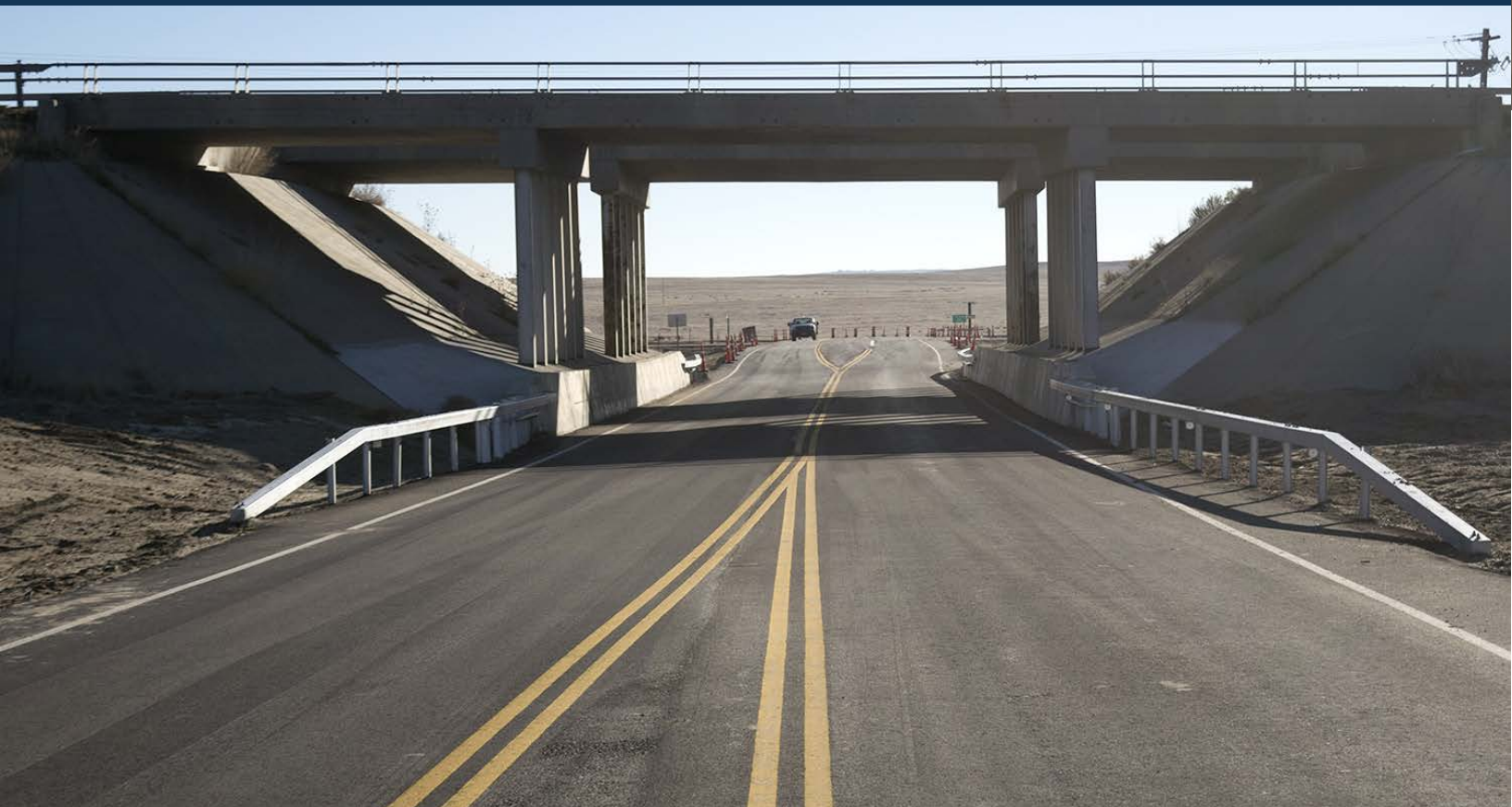
**Below: Direction Sign on Salt Creek Highway.**





**Above: Before picture of I-25 overpass looking east.**

**Below: After picture of I-25 overpass looking east.**



# **WESTWINDS INTERCHANGE**

---

## **FUNDING**

<b>\$7,000,000</b>	<b>WYDOT/MPO</b>
<b>\$2,000,000</b>	<b>WYDOT</b>
<b>\$1,000,000</b>	<b>Bar Nunn</b>
<b>\$1,000,000</b>	<b>Natrona County</b>
<b>\$1,000,000</b>	<b>Wyoming Business Council</b>

---

**\$12,000,000**    **TOTAL FUNDING**

---