

FACILITY ANALYSIS

Pine Bluffs Elementary School

Laramie County
School District #2

WSFD School No: 1102-003-0100

July 31, 2013

Appendix 6 (C)



July 31, 2013

Facility Analysis

Pine Bluffs Elementary School



VTBS ARCHITECTS
VAN TILBURG, BANVARD & SODERBERGH, AIA
ARCHITECTURE PLANNING INTERIORS
www.vtbs.com

Table of Contents

| | |
|--------|--------------------------------|
| Tab 1 | Acknowledgements |
| Tab 2 | Executive Summary |
| Tab 3 | Educational Adequacy |
| Tab 4 | Building Condition Assessment |
| Tab 5 | Architectural Assessment |
| Tab 6 | Structural Assessment |
| Tab 7 | Mechanical Assessment |
| Tab 8 | Electrical Assessment |
| Tab 9 | Conclusion and Recommendations |
| Tab 10 | Appendix |

- Exhibit A – Grade Configuration
- Exhibit B – Tabulation of Educational Adequacy
- Exhibit C – Room by Room Condition Assessment
- Exhibit D – Accessibility Plan
- Exhibit E – Specials & Special Education Location
- Exhibit F – Enrollment Projections
- Exhibit G – Environmental Assessment Map

1 - Acknowledgements

The Principals and staff of the VTBS Architects team of design professionals wish to convey our appreciation to Laramie County School District #2 for providing our firm with the opportunity to participate in this endeavor. The creation of this analysis was a joint effort by the Laramie County School District #2, the staff of Pine Bluffs Elementary School and the planning team of VTBS Architects and edutecture llc. Listed below are the key contributors:

| | |
|--|---------------------------|
| Jack Cozort | Superintendent |
| Rob Bryant | Business Manager |
| Sue Stevens | Principal |
| Kim Nelson | Facilities Manager |
| Gary Prager, AIA, LEED AP, NCARB, CEFPI, CDT | VTBS Architects |
| Robert Matschulat, AIA, NCARB, CEFPI, CSI, CCS | edutecture LLC |
| Dustin Mahoney, PE, LEED AP BD+C - Mechanical | JCAA Consulting Engineers |
| Jason Ridi, Electrical Project Manager | JCAA Consulting Engineers |
| John Shaffer, PE, Principal | Martin/Martin Engineers |

2 - Executive Summary

Background: Laramie County School District #2 has been actively pursuing options to improve its facilities. The district has determined that the existing Pine Bluffs Elementary School (PBES) facility provides a less than appropriate learning environment and does not comply with current energy efficiency, safety, or accessibility standards. Recognizing this, the district created the initial needs master plan dated July 2004, which was submitted to the Wyoming School Facilities Department (WSFD) for funding of a replacement facility. In July 2005, WSFD approved the design contract for a new facility and then approved the design funds for the project in September of that year. Construction funds were subsequently approved in October 2006. One year later the 35% design documents were submitted to WSFD but within four months the project was cancelled in March 2008. In April 2008, the district received a correspondence from WSFD directing it to complete the design. In August 2008, the design effort was again terminated.

Facility Assessments: There have been four facility studies or upgrades, of PBES in the past decade:

- 2004 - Facility master plan
- 2009 - SFD Suitability Study
- 2010 - Tobin and Associates upgrades to the existing facility
- 2012 - WSFD Facility Condition Assessment

VTBS Architects was commissioned in May 2013 by the Laramie County School District #2 to evaluate the existing facility and site conditions at the Pine Bluffs Elementary School. This project is an effort to validate and expand upon the maintenance and capital construction requirements identified in the Wyoming School Facilities Department analysis dated August 2012 and previous studies.

The purpose of this July, 2013 facility analysis is to update and supplement the previous studies with a single, comprehensive account of the existing conditions, configurations, and uses of the facility and how the physical infrastructure relates to the educational mission and objectives of the district and the community. It is also to evaluate the current facility's compliance with the February 2008 edition of the WSFD Elementary School Educational Specifications (ed spec). Furthermore, the intent of this report is to provide an independent, objective basis for evaluating the ability of the existing building and site to meet the District's goals of providing safe, modern facilities for educating students, reinforcing core student skills, facilitating strong parental involvement, and supporting a range of community activities.

This facility analysis identifies facility strengths and challenges to provide a tangible basis for defining a range of capital improvement options that include improvements, rehabilitation, or replacement of the facility as necessary to best serve the long term needs of students, staff, and the Pine Bluffs community. To accomplish these objectives, the VTBS assessment team conducted on-site field observations of the facility and the site in June 2013.

Approach and Scope: The existing building was reviewed by the assessment team through legacy documents, visual observations, discussions with maintenance, facility management, administration, and educators. The information presented in this document represents an independent observation and analysis of the current conditions of the physical and educational infrastructure of PBES. The objective is to provide the perspective of an informative general overview not the specificities of a comprehensive analysis. The assessments were visual, not forensic. Exercises such as destructive investigations, water and air quality testing, geotechnical research, environmental evaluations for hazardous materials, cost estimates, design concepts and detailed engineering analyses of building systems, or other tests and studies not specifically identified in the body of this document, are excluded.



Pine Bluffs Elementary School: The school is part of the Laramie County School District #2 in Laramie County located near Interstate Highway 80 in the southeast portion of the State of Wyoming. The District serves a population in the Town of Pine Bluffs and in the surrounding communities of approximately 1,171 total residents. There are a total of 6 school facilities in the District with 4 of them being elementary schools. The enrollment in Pine Bluffs Elementary School for the 2012/2013 school year is at 151 students. The school is served by a staff of 30 professionals.

The District anticipates a modicum of growth at PBES of approximately 7 students in the next 5 years and up to 12 in the next 9 years with the largest increase in the fourth and fifth grade levels (Exhibit F). The school currently provides free and reduced lunch to 36% of its students.

The Facility Analysis: As documented in the pages that follow, this analysis concludes that the educational adequacy of the existing PBES building and critical components of the physical infrastructure are deficient. Among other shortcomings, the PBES facility does not comply with current energy efficiency criteria, safety/security requirements, or accessibility standards. The multiple deficiencies may constitute adequate justification to request an appeal to obtain the funding necessary for substantial upgrades, a replacement facility, or some other combination of capital improvements.

3 - Educational Adequacy

Overview: The educational adequacy of PBES was reviewed on site June 10 and 11, 2013 by Robert Matschulat, AIA, CSI, CCS, CEFP1 of eductecture LLC, under the auspices of VTBS Architects. Refer to Exhibit A for the grade configuration and building use diagram.

While the architectural and engineering assessments (Tabs 4-8) attempt to establish the physical condition of building components and systems, the goal of the educational adequacy assessment is to evaluate the functional suitability of the building to achieve its intended purpose. In this case the intended purpose is defined by WSFD standards. A comprehensive tabulation of educational adequacy assessment findings is included as Exhibit B of this report. Those findings are summarized in the following text:

Demographics: PBES houses and is projected to continue to house a K-6 educational program for 150 to 170 students.

Capacity and Utilization: The main PBES building is 23,590 gsf and the south annex is 11,254 gsf for a total building area of 34,844 gsf. The WSFD Allowable Square Footage Calculator indicates that this gross area should be adequate to house a 215 student capacity and that only 26,233 gsf should be required to house the 151 students at PBES.

A casual comparison of theoretically allowable with the actual gross areas would seem to indicate that the PBES building is oversized or underutilized by one third. However, as identified in this report, the physical configuration, distribution, and amenities of net assignable spaces within PBES severely impact and limit the functional capacity of the building.

Accessibility: The WSFD educational specifications address accessibility by function or area or amenity, not as an overall category. The PBES site is not fully compliant with Federal Americans with Disabilities Act Accessibility Guidelines (ADAAG) and the building itself is significantly non-compliant. There are 36 exterior doors to the building yet only 10 of these can be considered even marginally accessible. Only one of these accessible entrances opens to a public way and it is distant from the official main entrance. Many rooms and areas of the building are completely or functionally non-accessible. Overall, the PBES facility falls far short of the goal to provide a “least restrictive environment” to school children.

See building accessibility plan, Exhibit D.



Typical ADAAG non-compliance issues were identified in the following categories:

Accessible Route: Non-compliant walk, corridor, and doorway widths, configurations, and clearances.

Parking: Accessible parking is not defined and off street parking in general is not convenient to accessible entrances. Visitor and staff parking is located at the south side of the annex building requiring long distances to the main entry.

Site: The overall PBES site is not fully compliant with ADAAG requirements. Some of the drainage swales, inlets, and outlets require guardrails or other protection for all populations both able and disabled. Some building entrances/exits are accessible only by means of steps. Some walks are too narrow to be considered compliant. There is no ADA compliant signage on the site.



United States Access Board guidelines for play and recreation areas are not yet part of the Department of Justice enforceable standards and should be viewed as recommendations. The play area is paved and the apparatus area appears to be covered with recommended accessibility compliant wood fiber safety surfacing. Gaps and edges at the transitions between pavement and apparatus area surfacing require attention and constant maintenance to comply with recommendations. The play apparatus itself is not compliant with ADAAG recommendations for types, quantities, access, ramps, and transfer.

Ramps: The ramp connecting the main building with the south annex is too steep to be considered ADAAG compliant. Technically, one door on the south and one door at the east (Library) qualify as accessible. Functionally, the entire south wing is inaccessible.

Doors: An assortment of non-compliant door deficiencies were identified including clearances, approaches, hardware, and operating force. Many doors in PBES fail to provide the required 32 inch horizontal clearance required by ADAAG. Two of three vestibules in PBES are too shallow to comply with ADAAG. The exterior primary circulation system is acceptable by Federal regulations, but is far from practical for disabled students, staff, and public.

Plumbing Fixtures: No toilet room or fixture in the entire PBES building is even partially ADAAG compliant, including those that serve the Special Education suite. Although this one area was renovated in the 2010 project, it does not appear to be consistent with the ADAAG guidelines.



Mounting Heights: Heights and locations of amenities such as switches, hardware, and dispensers within PBES vary widely but are generally non-compliant with ADAAG requirements for approach and reach ranges. No base or wall cabinet in the building can be considered accessible.

Signage: There is no ADA compliant signage in or around the PBES building.

Acoustics: No data; not measured. No issues identified.

Communications and Educational Technology: Included in The State of Wyoming School Facilities Department (WSFD) draft Elementary School Educational Specifications / Facility Planning Standards dated February 2008 are addressed in section 8.

Environmental and Sustainability Issues: Environmental and sustainability evaluations require testing and forensic analysis, which are beyond the scope of this assessment. The facility assessments were visual, not investigative. Detailed exercises such as material sampling and analysis have been excluded. The building was not evaluated to determine compliance with LEED or any other sustainability standard.

During the 2010 remodel project it was noted that asbestos containing floor tile was present within PBES. Most of this material was removed and replaced with new carpet as a part of that project. However, there are many areas of the building where ACT still exists in various finish elements. See Exhibit G floor plan by Tobin & Associates dated 11/19/2010.

Unencapsulated asbestos containing materials do not pose a health hazard unless disturbed. Floor tile encapsulated by carpet will require special attention when the carpet needs to be replaced.

During this assessment, unencapsulated 9"x9" floor tile was observed in other building locations and is also presumed to be asbestos containing building material (ACBM).

Federal and State regulations require that thorough environmental assessments be performed before major capital construction is undertaken. In most cases the property owner is required to identify and report environmental issues regardless of construction activity. Therefore, it is recommended that comprehensive environmental studies be conducted to identify the presence of asbestos and other hazardous materials. Future PBES project budgets and schedules should be developed to accommodate the inspection, testing, and identification of:

- Asbestos
- Lead
- Radon
- PCB
- Mold
- Indoor Air Quality
- Wetlands
- Other environmental issues identified by local, State, or Federal Regulations.

Illumination: No data; Not measured. Daylighting is generally average or above in the main building; Below average in the South Annex. No issues identified.



Safety and Security: Safety and security requirements are enumerated in The State of Wyoming School Facilities Department (WSFD) draft Elementary School Educational Specifications / Facility Planning Standards dated February, 2008, and have been evaluated in that section of the report. See below.



Site and Site Improvements

The PBES facility currently resides on the northwest corner of a common site shared with the Pine Bluffs High School to the east. Outdoor recreational amenities available to elementary students are basically a concrete paved courtyard bounded by the multiple buildings, with a playground apparatus area to the south. The play apparatus area surfacing is wood fiber and the apparatus itself is relatively new. The site is predominantly hardscape pavement and landscape rock. Green softscape play areas for the elementary school students are non-existent except for remote athletic fields shared with the adjacent high school.

There are no physically separated bus, pick up, or drop off areas, other than those demarcated by curbside signage. Off street parking is an unpaved area located south of the building.



Only one fire hydrant was observed on the site at the north curb.

The natural topography slopes generally to the north and west. Storm drainage pipes and culverts are buried but inlets, outlets, and paved swales are exposed and mostly unprotected, even in high traffic, active play areas. These should be considered hazards to children and unwary adults. Guardrails or other forms of protection are strongly recommended at these locations. Ongoing maintenance is required to clear landscape rock from some storm drain inlets. No retention structures were observed on the PBES site.

The following items were considered beyond the scope of this assessment and are excluded from this report:

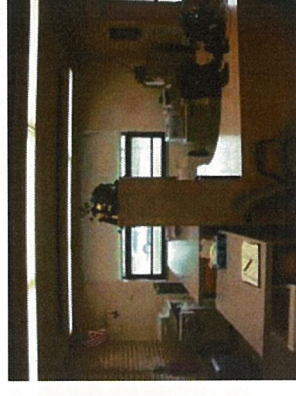
- Location of building to student population
- Geotechnical Engineering analysis
- Easements, ROW
- Site utility locations, sizes, conditions, and adequacy (water, sewer, storm sewer, fire, gas, electricity, telecom, CATV)
- Zoning Analysis
- Snow removal, drifts, and ice hazards

Educational Program: The State of Wyoming School Facilities Department (WSFD) draft Elementary School Educational Specifications / Facility Planning Standards dated February, 2008, provides the basis for assessing the educational adequacy of PBES as follows:

General: The configuration of the building challenges administration, staff, students, and public with circuitous, usually exterior paths of travel among rooms. With varying degrees of success these rooms have been reassigned and adapted from original intent to serve current programs. Very few ceilings in PBES meet WSFD minimum height criteria. All classroom areas are well under the recommended height.

The PBES site configuration and overabundance of hardscape severely limit on-site outdoor activities and further increase the “heat island” effect of the only outdoor area available for student activities.

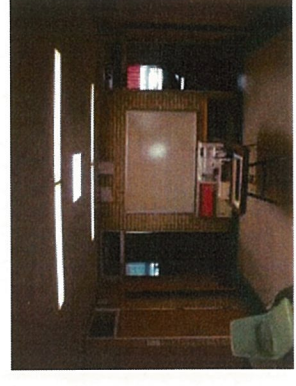
Administration: Small and generally substandard administration spaces are dispersed throughout PBES. The Reception/Waiting area and Nurse Suite are so small as to be nearly non-functional. Counseling is housed in a generous reassigned classroom but is very distant from the administration area. The Conference Room is undersized for the desired capacity of 10 and is also remote from the main office. The Workroom and Staff Lounge share a common reassigned classroom that serves neither function well. Staff Toilets are shared students, and the intended adult toilets in the Administration Area serve all ages simultaneously.



Storage areas - administrative and otherwise - are generally inadequate throughout PBES.

Academic Areas: PBES classrooms generally comply with criteria and amenities specified by WSFD. All classrooms have the required sink. A major deficiency is the categorical lack of operable walls for team teaching. Except for accessibility issues discussed elsewhere in this report, classroom casework and shelving dimensions are generally non-compliant with WSFD requirements and existing components are typically residential, not institutional quality.

Educational Specifications require a Multi-Use Room for teacher planning, aides, work space, storage, small group teaching, and Title One. All PBES classrooms are served by a Commons that generally fails to meet the criteria for Multi Use Rooms, particularly the requirement that “No doors to the exterior are permitted.” The PBES Common areas provide the only access between classrooms and other areas of the building...through exterior doors.





Pairs of toilet room consisting of one watercloset and 1 lavatory each serve pairs of classrooms. The number of fixtures for these is below requirements of current codes. These are also the only space for teachers to utilize the bathroom facilities and the doors have no locking devices for adult use.

Special Education: Except for the lack of supports for ceiling hung apparatus, the special education suite in PBES generally exceeds criteria and amenities specified by WSFD. The Self Contained Room, Resource Room, and PT/OT in PBES are each housed in a dedicated, reassigned, former classroom.

Art Education: The Art suite at PBES is grossly substandard and it meets few of the requirements identified in the WSFD Educational Specifications. Finishes, equipment, shelving, plumbing, lighting, and electrical power are all deficient. Teacher Planning, Work, Resource, Kiln, Clay Storage, and Material Storage are all lacking entirely.



Music/Performance: The Music suite in PBES is isolated and substandard. It is remote from the Gym and totally divorced from any semblance of a Performance function. It meets few of the requirements identified in the WSFD Educational Specifications. Where the standard calls for "no windows are preferred," the PBES Music Room is surrounded by windows on all four sides. This space is the most logical location for the function to separate the sound from other areas of the building however, it is a converted kindergarten classroom.

Casework is particularly non-compliant. Shelving, plumbing, lighting, and electrical power are all deficient. Instrumental Music and Instrumental Storage are lacking entirely. Because there is no Performance component, Chair and Table Storage are not associated with the music space in PBES and are located in the Multi-Purpose Gym, distant from the music space.

Given the available spaces in the PBES facility, the assigned room is probably the most logical to house the Music program, regardless of the itemized deficiencies. As stated above, its isolation provides acoustical separation from other educational and administrative activities, but almost every other aspect of the space is substandard. The space was originally designed to house kindergarten programs.



Media Center: The PBES Media Center is grossly non-compliant with WSFD standards. Instead of being open to view in a central location, the PBES Media Center is closed off and remote in the far eastern end of the South Annex. Casework, shelving, book bins, and display cases are inadequate or lacking entirely. Five of the nine Media Center sub areas identified in the educational specification are not provided at PBES in any form: Individual/Small Group, Public Access Catalog, Library Office, Processing/Production, and Learning Resource Storage.

Computer Laboratory: The computer lab at PBES is housed in a corridor/commons that provides the sole interior access to the Media Center. Required casework is absent, and mechanical/electrical systems do not meet WSFD standards. Skylights contribute to glare on computer monitors.

Physical Education: Physical education activities in PBES are assigned to the Multi-Purpose Room, which also serves as a cafeteria seating area. Finishes and sport equipment do not comply with WSFD criteria. The PE Office is not adjacent and therefore cannot provide the necessary visual supervision of activities. Required electrical and telecommunications amenities are lacking.

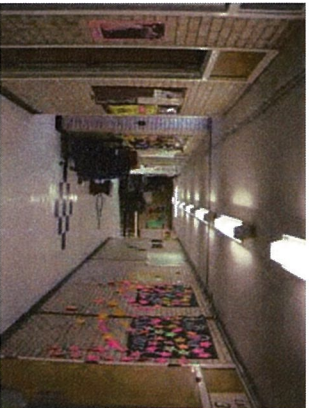
Cafeteria/Multi-Purpose Room: The PBES Commons room is intended to serve as the Cafeteria/Multi-Purpose room but due to its central location it functions more as a lobby and primary corridor to the south portions of the main building. The room is too narrow to effectively serve its intended purpose and traffic patterns aggravate the situation, forcing many activities into the adjacent Multi-purpose Room. The space is not suitable for meetings or conferences as intended by the ed spec. A proscenium-type curtain separates the Cafeteria/Multi-Purpose room from the Multi-purpose "Gym", but this falls far short of providing a viable performance area. The curtain alone cannot be considered a safe barrier between active and passive functions.



Kitchen: The Kitchen is small, congested, and outdated. There is no dedicated Locker, Toilet Room, or Custodial closet as required by the educational specification. The Laundry room is near, but not internal to the Kitchen as required by WSFD standards.

Circulation: There are 36 exterior "entries" to PBES. As described above the main entrance does not meet accessibility standards. Bus and automobile traffic are not well separated. Entries do not have walk off mats.

The PBES Lobby is too small and narrow to function as anything more than a corridor. There is no display case and no lockable security gates.



Corridors in PBES are minimal. The building was designed as a “warm weather” campus plan. Circulation among most rooms and functions is via the outdoors. Corridors that are provided lack required finishes, display surfaces, and signage. Some doors swing into and obstruct corridors.

Custodial: Custodial Closets and Custodial Storage would be adequate for a building of conventional design. Due to the external circulation at PBES, the east wing of the main building is underserved. Service access to the Media Center is inconvenient as custodial staff is required to traverse through educational spaces for access.

Mechanical, Electrical, and Communications Rooms: The Mechanical/Electrical room is adequate, but door width and roof access are lacking.

Plumbing: Generally PBES plumbing fixtures and fittings are dated, but have been maintained to be functional. Academic Student Toilet rooms are designed with doors rather than the privacy wall configuration recommended by the educational specification. Core Area and Nurse’s work sinks are inadequate. No keyed hose bibs were observed.

Technology Wiring: See electrical in Tab 8.

Electrical and Special Systems: See electrical in Tab 8.

Security: Sight lines at PBES vary and are deficient at the South Annex. Secluded areas south and east of the South Annex are a concern. The obvious security issue of 36 exterior entries has been mitigated, to some degree, with a card access system and the conversion of many doors to exit only operation. There is no CCTV surveillance system at PBES.

Also see comments under Site heading.

4 - Building Condition Assessment

The condition assessment of this building was conducted on June 10th and June 11th, 2013, during which time the conditions of major components of the building were observed and assessed, and major deficiencies noted.

Based on field observations and legacy information provided by the owner, it has been determined that the District's concern for the safety of their students is of the utmost importance, followed by the educational adequacy and the equity for facilities of similar size and enrollment.

The main building and south annex were originally constructed in 1961, with subsequent additions constructed in 1989. Those additions included the Library/Media room at the east end of the annex, and the Counseling/Title One addition at the northeast end of the main building. The building appears to be generally in sound condition, however, it is undergoing constant maintenance activities to keep the facility operating. As this assessment will indicate some concerns related to the deficiencies in the basic building components, the district, by virtue of the existing building conditions, will have a difficult situation related to upgrades to the educational systems of the building. There is inadequate interstitial space for power, technology and plumbing, upgrades, Ceilings tiles are beginning to separate from the substrate, casework is substandard in size, capacity and quality, lighting is minimal. Any spatial upgrades or reconfigurations of spaces are limited by the masonry construction of the building. Refer to Exhibit C for a Room-by-Room assessment.



The site is less than optimal for an elementary school. There are lawn areas along the perimeter of the building along Elm Street and East 5th Street. This is the only area of the site with grass and is not suitable or safe for activities. The only available green space for the elementary school students is a small patch of grass between the elementary school and the high school.



Visitor and staff parking are located to the south of the south annex, which is far removed from the main entrance.

Information obtained during the on-site observations is organized by major building components as follows: Site access and circulation, foundations and structural systems, building envelope, building interiors, mechanical/plumbing systems and electrical systems.

5 - Architectural Assessment

Overview: The Architectural Assessment of PBES was reviewed on site June 10th and 11th, 2013, by Gary Prager, AIA, LEED AP, NCARB, CEFPI, CDT (Wyoming License # C-2041) of VTBS Architects.

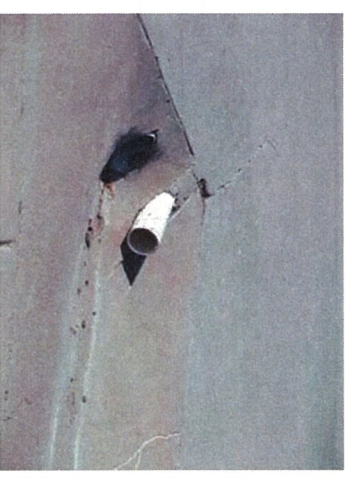
The remainder of this document attempts to establish the physical condition of building components and systems. The goal of this is to evaluate the functional suitability of the building systems. A comprehensive tabulation of the building assessment findings is included as Exhibit C of this report. Those findings are summarized in the following text:

Site Elements: The site is located at the northwest corner of 5th Street and Elm Street. There are no physical separations between parent drop off, pedestrian, walks as well as bus lanes. The facility administration has used the buses to block the through street on Elm to prevent passenger vehicles from passing by. The buses drop off and pick up along the curb at Elm Street while passenger vehicles use the curb on the west side of the street. This creates a situation where children are crossing the street to get to their rides, causing an unsafe situation. Although blocking the street has reduced the danger of driving through, there are still some instances where passenger vehicles perform U turns to get out of the area.



The playground to the south of the building is generally paved with concrete and is also used to provide drainage for the adjacent Junior/Senior high school site. There is a playground to the south of the paved area which contains play apparatus for the elementary students. A small grass playfield is located to the southeast of the school building, and is not adequate for organized play. For organized activities, elementary students are lead to the high school athletic fields for outdoor team play. The Kindergarten and first grade students share the playground with the older students.

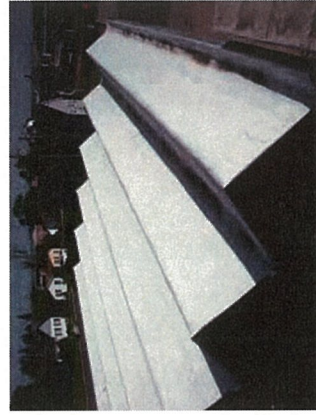
The east end of the concrete play area is sloped to drain the site to the south and east of the area, including portions of the high school site. It contains some of the drain pipes accommodating off site improvements.



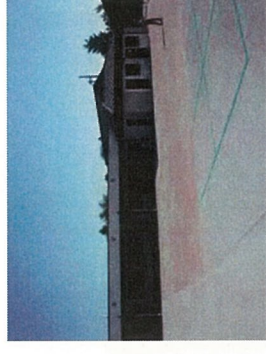
Architectural Building Elements: Access to all classroom pods in the main building is through exterior entries, requiring the students to exit the building to access other areas of the building for any and all special functions outside of their individual classroom pods. There are a total of 5 pods in this portion of the building, which are configured in various age groups and/or functions. See the overall plan Exhibit A. Based on discussions with

school administration, it was determined that during cold or inclement weather, approximately 15 minutes of valuable class time is lost each time students are required to transfer to attend specials, special education or other activities in other pods.

The roof membrane was replaced in 2010 after a hail storm damaged the roof. Observations on the roof indicated that the membrane is in excellent condition. However, there needs to be walkway pads added at access points to the mechanical equipment. There is a loose cable running over the roof that will need to be secured. There was also one area of the roof that was observed to be blistering. This area should be removed and re-roofed. It is recommended that the manufacturer or installing roofer be contacted to determine if this is warranty work.



The roof over the music room is a “saw tooth” structure that appears to have a white rubber (EPDM) membrane adhered over a spray on insulation material. This membrane is mechanically fastened at the roof edges. All roof structures on the original buildings appear to be plywood over 2x dimensional framing. Based on information received, insulation was not replaced during the roof membrane replacement. There are also some areas of the serrated roof soffits that are showing signs of deterioration in the painted plywood material.



The exterior walls in most classrooms have been replaced in the 2010 remodel project. Most of the glazing is insulated and the exterior wall is an Exterior Insulating Finish System (synthetic stucco) over metal studs with sheathing, R-19 insulation and gypsum board on the interior. This assembly appears to be adequate for the vertical enclosure in the classrooms, however, coupled with the roof assembly and the remaining masonry walls and non-insulated glazing, the total building envelop is lacking in current energy efficient systems and standards.

Fenestration is a mix of insulated aluminum windows, original single pane glass and aluminum doors and storefronts. The music room and administration areas are mainly original windows and several small areas throughout the facility are still the original windows. All the new exterior walls within the 2010 remodel program are fitted with aluminum and insulated glass awning window units with insect screens. The 1989 additions have aluminum clad wood casement windows with integral mini-blinds. Although the new exterior walls and doors are believed to be energy efficient, the presence of a vast amount of single pane glass and a moderately insulated roof assembly is considered an issue with the overall mechanical system function. Exterior doors are generally hollow metal with glass lites.



The original doors in the building vestibules are single pane in either aluminum or hollow metal frames. The classroom windows in the south annex have a small window in the corner of the room, which does not comply with current codes or educational standards for natural daylight or natural ventilation.



Casework in classrooms is generally substandard. The countertops are plastic laminated particleboard, and are showing signs of deterioration. The plastic laminate is broken and/or delaminating and the cabinet doors are “peg board” hardboard panels with recessed finger pulls. Most cabinets are worn and do not allow for ease of sliding. In many instances, such as the art classroom, residential casework was installed. In the 1989 additions, the casework is delaminating and breaking off, causing an unsightly condition in a high profile area. This is typical in a few of the classrooms of the 1989 expansion program.

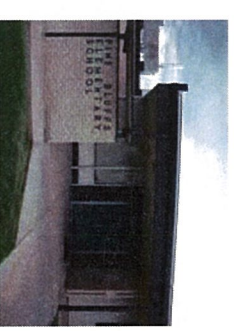


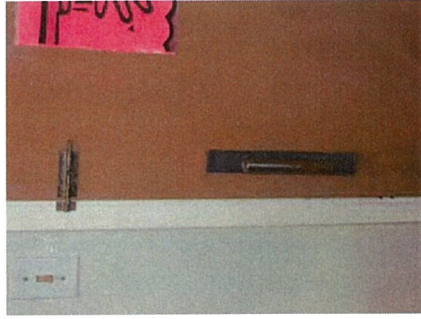
Several areas of the building are in need of upgrades to repair ceilings, expand bathrooms, upgrade lighting, and ADA modifications. The adhesives in the ceiling tiles in the original building are beginning to delaminate, causing tiles to drop. There are concerns with the electrical panels in the janitor closets being directly above the utility sinks.

The bathrooms are too small to comply with current standards. Modification to the bathrooms would be difficult and costly due to the existence of concrete block walls.



Security: There are several areas of the facility where unauthorized access may be of concern. At the front entry, for example, it is possible to access the entire elementary school roof by simply climbing on the entry screen wall and hopping up onto the roofs. There are also several doors at the perimeter of the building that are propped open during occupancy for air flow, and allow for easy access to the interior of the facility.





Hardware throughout the building is inconsistent. There are multiple manufacturers, styles, finishes, and hardware functions. This situation complicates maintenance and can compromise security. Some of the exterior doors at the perimeter are blank on the outside surface while others have knobs or lever hardware. Interior doors have a variety of hardware and locking cores. During the site walk, it was discovered that the grand master did not work in several of the doors. The only handicap bathroom, in the 1989 addition, had one door with a sliding latch which would require destructive procedures to gain access in the event of an emergency.

Finishes are generally in good condition and well maintained in the public and classroom areas. There are several areas where the finishes require attention. The ceiling tiles were addressed previously and pose a definite safety hazard. In the original bathrooms, there is an epoxy or seamless flooring that is in need of repair. The condition is unsanitary at best. Some of the block walls are cracking, however, it appears to be only a cosmetic issue. Some of the exposed floor tile observed in the classroom areas is 9"x9" tile which generally indicates that ACM is present. It has also been observed that the ceiling tile, in the 1989 addition bathrooms, is a 2x4 lay-in tile that is not suitable for wet areas.



6 - Structural Assessment

Overview: The Structural Assessment of PBES was reviewed on site July 2, 2013 by Amanda Miller, PE Martin/Martin Consulting Engineers, under the auspices of VTBS Architects.



The examination was completed in an effort to develop a reasonable understanding of the buildings' structural condition and soundness. The majority of structural elements are covered by finish materials and were, therefore, not directly observable. Material testing, verification of original structural design, and in-depth review of structural components was not performed.

If renovations or additions to the structure are anticipated, compliance with either the International Existing Building Code (IEBC) or International Building Code (IBC) will be required. These codes provide for a prescriptive, work area, or performance method of analysis for the structural systems and generally require a modified or altered structural system to be brought into compliance with the current IBC. For PBES, the following constraints will be necessary with any renovation:

Lateral system – The code requires that any lateral member that sees an increase in its demand to capacity ratio of more than 10% must be brought up to compliance with the current edition of the IBC. As a specific lateral system was not identified in any of the existing buildings, it will be difficult to assess an increase of more than 10% and as such, an entirely new lateral system may need to be installed. If significant modifications or alterations are considered, the economic penalties of installing a new lateral system should be carefully assessed early in the design process, as these costs are anticipated to be significant. Renovation items that could trigger the requirement for a new lateral system include:

- Upright removal of interior or exterior walls.
- New door or window openings cut into interior or exterior walls.
- Removal or reconfiguration of column locations
- New parapets that increase the wind exposure of the building.
- New mechanical units that increase the seismic mass at the roof level.
- New openings in the roof diaphragm.

Gravity System – To avoid additional framing or member reinforcement, any modification or alteration will need to be completed such that the demand to capacity ratio of gravity members is not increased by more than 5%.

Although the building appears to be in relatively good structural condition, any significant renovations should be carefully considered. The potential for a new or retrofitted lateral system will carry significant costs which will need to be evaluated against the cost of new construction.



7 - Mechanical Assessment

Overview: The Mechanical Assessment of PBES was reviewed on site June 10, 2013, by Dustin Maloney, PE, LEED AP BD+C JCAA Consulting Engineers, under the auspices of VTBS Architects.

The facility is heated with a hydronic heating system, consisting of (2) natural draft boilers, (2) system pumps, hydronic cabinet unit heaters in each classroom, hydronic base boards in the gym and common areas, and one heating and ventilating unit for the gym. The remote Music Room is equipped with electric baseboards.

Of the cabinet unit heaters, 14 are new and 9 are original to the building. The new units are equipped with outdoor air intakes to provide ventilation to the served space and appear to be sized correctly. Older cabinet unit heaters do not appear to have an outdoor air intake. Additional ventilation can be provided by operable windows that were installed during the 2010 renovation. The remaining cabinet unit heaters and all of the hydronic baseboards are original to the 1960's, 1970's, or 1980's, depending on which phase of construction they were included in.

The kitchen hood and make-up air system was replaced in the 2010 remodel, and was designed for coordinated use.

The boilers are undated, but labeled to comply with 1994 pressure vessel code, which implies they were constructed post-1994. The boilers and hydronic system currently uses electron/pneumatic controls. Only a general alarm to the BAS is provided.

The facility is not provided with mechanical cooling.

Domestic hot water is provided by (1) natural draft water heater and (1) hot water circulation pump. The water heater was labeled to have been installed in August, 2011.

Life Safety and Health Issues: The only automated fire suppression system is located in the cooking hood of the kitchen. The remainder of the facility does not have a fire suppression system, such as a wet-pipe fire sprinkler system typically found in modern public buildings. Fire sprinkler and other fire suppression systems have demonstrated the ability to retard the spread of fire, allowing occupants to escape the area. They have also been proven to reduce damage to the structure that the fire occurs in.

The building is not equipped with a means to mechanically cool spaces. The principal has reported that there have been incidents of heat-related illness, such as heat stress, with the students and staff. A focused effort has been made to ensure that everyone stays hydrated throughout the day, and staff pays attention to the well-being of the students and each other. Additional budget has been spent to procure temporary cooling units when temperatures have been at their most extreme.

Building Code Issues: The only automated fire suppression system is located in the cooking hood of the kitchen. The remainder of the facility does not have a fire suppression system, such as a wet-pipe fire sprinkler system. It is not unusual to retrofit a fire sprinkler system during building remodels or additions to bring the facility concurrent with established building codes. As it appears, a retrofit of this type was not a requirement of any of the remodels or additions.

The restrooms adjacent to classrooms cannot accommodate an individual with ADA needs. Door openings and restroom partition spacing is too narrow to allow for proper access, and stalls lack grab rails. It appears that restroom ADA requirements have not been included in renovation projects, most likely due to the fact that major building structures would have to be altered to make the required accommodations.

Learning Environment Issues: The building is not equipped with mechanical cooling. The principal has reported that they have cut instruction short and sent students home early in the day, due to heat. She estimated that a cumulative of 3-4 days of instruction have been missed in the fall of 2012. Additional budget has been spent to procure temporary cooling units when temperatures have been at their most extreme in order to maintain the comfort of the staff and students.

Energy Issues: The kitchen hood fan does not appear to have any automated controls associated with it and it was found running while the kitchen was not in use. Adding controls to sense when the hood temperature is elevated can reduce run-time and overall energy consumption.

The natural draft boilers currently installed have a burner efficiency of 85%. Applying a typical factor to account for altitude, actual performance may be as low as 70%. New condensing natural gas boilers don't require an altitude de-ration and are as efficient as 95%.

The natural draft domestic water heater currently installed has a burner efficiency of 80%. Applying a typical factor to account for altitude, actual performance may be lower than 70%. New condensing natural gas domestic water heaters are available, don't require an altitude de-ration, and are as efficient as 95%.

The facility is equipped with a rudimentary BAS, with service provided by LONG. The current facility manager reports that his experience on site is limited to the past four months and he has not received training on how to operate the BAS.

Proper training would allow him to understand the capabilities of the system and to fine tune it to the changing energy and comfort needs.

The hydronic pump and gym HVAC fan motors have been replaced like-in-kind as they have failed. Typical standard motor efficiency of this type is in the 75-80% range. It would be a nominal investment to upgrade to NEMA Premium motors during the replacement process. Premium motors typically have efficiencies in the 85-90% range for the installed sizes.



Replacement of the existing boilers and water heater with higher efficiency condensing equipment would improve overall building energy efficiency. Also, expanding and upgrading the BAS for full DDC would allow equipment schedules and set points to be fine tuned for the use of the facility and energy efficiency. At a minimum, it is suggested that the O&M staff be provided with the training they need to fully understand the existing system and its capabilities.



While plumbing is considered to be aged, most of it is serviceable and in acceptable working order. However, there have been areas noted to have leaking faucets and traps. Fixtures are old and parts are difficult to obtain for maintenance operations. It could be argued that the condition of the plumbing impacts the learning environment by distracting the students with the commotion or repairs of limited use of the room during repairs.

8 - Electrical Assessment

Overview: The Electrical Assessment of PBES was reviewed on site June 10, 2013, by Jason Ridi, Electrical Project Manager of JCAA Consulting Engineers, under the auspices of VTBS Architects.

The facility is powered from a local utility 112.5 kVA pad mounted transformer to an 800 amp disconnect switch that feeds an 800 amp, 120/208 volt, 3 phase, 4 wire switchboard "MDP". "MDP" consist of (14) circuit breakers feeding branch panels located through-out the building and mechanical equipment. Switchboard "MDP" along with the 800 amp disconnect switch were replaced during the 2010 remodel and appears in good condition. Switchboard "MDP" appears to have only (1) space available for any remodel work.

Branch panelboards located throughout the building to serve classrooms and general spaces are from the original construction and appear to have no additional circuit breakers available for any remodel work. The outdated panelboards may not meet current code requirements for fault current values for any remodel work.



Lighting in the Classrooms consist of 3 rows of surface mounted 2'X4' – 2 lamp lensed troffers along with 1'X4' – 1 lamp lensed troffer above the sink area. Each classroom has an adjoining boys and girls restroom with a surface mounted 1'X4' – 1 lamp lensed troffer with a 3-way switch at each classroom entrance. Switching for classrooms is (2) single pole switches at the entry door, (1) switch controls, (1) row of fixtures and (1) switch controls the alternating (2) rows of fixtures, and a single pole switch controls the above-sink fixture.

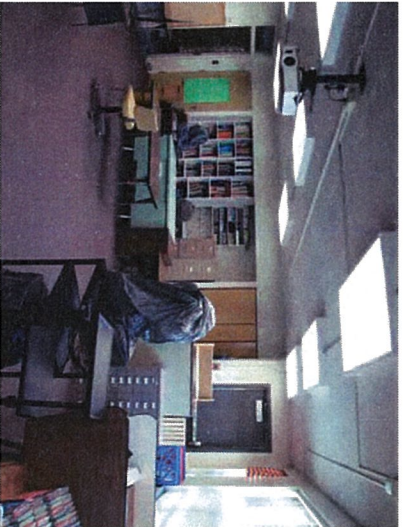
Lighting in the Commons Area consists of recessed mounted 1'X4' – 2 lamp lensed troffers controlled with a single pole switch, located adjacent to the exterior door.

Lighting in the offices and corridor consist of 1'X4' and 2'X4' troffers on single pole switches.

Exterior lighting consists of wall packs and downlights located around the perimeter and soffit of the building. It appears to be inadequate especially by the playground area, based on the placement of the fixtures.

All lamps in all the luminaires located through-out the building were retrofitted with compact fluorescent spirals and T-8 lamps during the 2010 remodel.

Life Safety and Health Issues: The facility is not equipped with space smoke or temperature sensors for fire protection. The only HVAC units large enough to have duct-mounted smoke detectors are the kitchen make-up air unit and the heating and ventilation unit serving the gym. The facility relies on wall-mounted pull stations located in classrooms and common areas adjacent to exterior doors to activate the fire alarm system. This may present a problem with activating the alarm, should the individuals in the zone of origin of an event be unable to reach the pull station or be located in corridors that do not have pull stations at the exterior doors. It may also contribute to false alarms, given that the facility is an elementary school and the natural curiosity of the students.



The main facility is effectively split into two buildings, the main building and the south annex. If the fire alarm system is activated in one building, it must be manually activated in the other. This manual activation requires coordination with personnel, which may be stressed under an emergency condition, causing a delay in the evacuation of the building. The coordination may also cause a delay in evacuation during drilling exercises.

The facility is not equipped with fire alarm horn/strobe notification devices in the classrooms or corridors. During a fire or emergency in the building, other locations or classrooms will not be aware of the imminent danger and be able to safely evacuate the building.

The classrooms and multiple corridors through-out the building are not equipped with illuminated exit signs. Illuminated exit signs are required to have a battery back-up for 90 minutes during a power loss situation to guide individuals out of the building.

The classrooms and multiple corridors through-out the building are not equipped with emergency egress lighting. Currently, emergency egress lighting fixtures are required to have a battery back-up for 90 minutes during a power loss situation to guide individuals through corridors or classrooms.

The building is not equipped with exterior egress lights for exterior egress doors. Currently, exterior egress lights have a battery back-up for 90 minutes during a power loss situation to guide individuals away from the building after exiting an egress door.

Building Code Issues: The classrooms are not equipped with ground fault interrupter receptacles above counter within the sink locations.

No occupancy sensors for controlling luminaires are located in the building.

Learning Environment Issues: Light level values in the classrooms averaged from 20-30 foot-candles with 10-15 foot-candles in the adjoining restrooms. The low light levels generate from luminaires being used with 2 lamps in the classrooms and 1 lamp in the restrooms. The classroom luminaires are not equipped with daylighting devices, which reduces the light level of the luminaires based on sunlight entering the room. This is an energy saving measure and research has shown that these devices increase the learning ability of the students.

Light level values in the Main Corridor and Main Commons Area averaged from 13-22 foot-candles. The low light levels generate from luminaires being used with 1 lamp and 2 lamp 1'x4' fixtures. The low light levels create a dark environment for guests entering the facility and students going from class to class.

There is a lack of audio enhancement systems in the classroom for the enhanced learning environment. Video outlets are not installed in the building and voice and data is absent in the gym and multi-purpose room, all in accordance with the WSFD educational specifications.

Smart boards are currently being used in select classrooms with ceiling mounted outlets. Data outlets area surface mounted raceways. Based on the inadequate space available in the branch panelboards to add new circuits, providing all classrooms with current technology smart boards is not available with the current building.

The theatrical lighting and controls for the Multi-Purpose Area are from the original 1960's construction.

Technology: Wireless technology is currently being used in the building with wireless routers located in the commons areas. This technology infrastructure does not appear to meet industry standards for fiber optic or a growth factor or 20% for the telecommunications as required by the WSFD Educations specifications. There are two data outlets serving the computer labs in the commons areas which is well below the recommended 15 – 20 outlets per the WSFD ed spec.

There is a lack of receptacles and computer data outlets located in classrooms for computer usage. Computer stations are currently being used in the Commons Area between classrooms, with extension and strip cords connected to the common use receptacles installed during original design.

Energy Issues: Dual level switching and daylighting in the classrooms will reduce the energy consumption and still keep adequate light levels.

Occupancy sensors in the classroom restrooms and adjacent to classroom casework, will eliminate lights being left on all day by the students.

Security: The public address system and controls located in the multi-purpose gym do not meet current standards. Furthermore, the classrooms are not equipped with a two-way communication system for information and emergency use. And finally, there is not CCTV surveillance system with cameras at the parking lots, playgrounds and main corridors. The only CCTV is at the main entry adjacent to the office. There is also no door monitoring system at the exterior doors of the classrooms. All these security issues are inconsistent with the requirements of the WSFD educational specifications.

9 - Conclusion and Recommendations

Conclusions: As documented in previous studies, the physical condition of Pine Bluffs Elementary School is generally acceptable. However, some areas require attention including: life safety systems, thermal comfort and ventilation, security issues, adjacency concerns, student circulation within the building, and safe access to transportation and recreation.

Deficiencies with the electrical system (Tab 8) are probably the most significant category affecting operational safety, security, and educational adequacy. The electrical power and distribution system can be considered at, or uncomfortably near to maximum capacity. Lighting of learning spaces is categorically inadequate. Nearly every aspect of the electrical system requires major upgrade or replacement.

Integration of the fire alarm system with notification devices between the main building and south annex, along with exit and egress lighting, should be highest priority for life safety issues. Integration of the systems will allow the school to meet fire alarm drill requirements and expedite the evacuation of the facility in a real event of emergency.

Proper lighting in the classrooms and corridors will create an environment for students and staff. Energy efficient lighting controls will help reduce energy cost by eliminating lights being left on when no students or staff are occupying a space.

The largest mechanical impact on the classroom environment is the lack of cooling. Maintaining a comfortable classroom environment allows students and staff to focus on learning activities and reduces stress.

In general, the building appears to be in reasonable structural condition considering their age, occupancy, and construction type. No outward signs of significant structural distress were identified in the foundation, exterior walls, or roof systems. The building has provided satisfactory structural performance over its 50 plus years of service, and can be expected to continue to provide satisfactory performance provided the following are conditions are met:

- A structural maintenance program consisting of observation and repairs is implemented and completed on a yearly basis.
- Water infiltration to the building structure is prevented in all locations and the exterior of the structure is graded or re-paved to assure a positive slope away from the building.

Regardless of the physical conditions of building components, materials, and systems, the educational and functional adequacy of Pine Bluffs Elementary School can only be described as seriously deficient. In a few cases such as classrooms, the renovation/retrofit of finishes, casework, specialties, equipment, and/or telecommunications might mitigate a variety of educational specification deficiencies. Some minor improvement could possibly be achieved by reassignment, relocation, or consolidation of some functions such as Computer Lab, Music, and Special Education. However, if the objective is to bring the facility into compliance with the 2008 edition of the WSFD Elementary School Educational Specifications, the physical limitations of the existing building and site configuration restrict most options for easy correction.

Site deficiencies, general circulation, accessibility, Art, Media Center, Administration Area, safety and security, are engrained in the existing physical infrastructure and cannot be resolved without comprehensive capital improvements.

Recommendations: Despite numerous overlapping inadequacies and inconveniences, the administration and staff of PBES have done an admirable job of accommodating educational and other programs within a very challenging facility and site. Obviously, the building has been adapted to deliver an elementary school program, but the chasm between the existing facility and what is envisioned in the WSFD Elementary School educational specifications is immense.

Well-designed renovations, additions, and partial demolition could improve or at least mitigate many condition and educational deficiencies identified in this report, but the solutions would be compromises, and total project costs would inevitably be unacceptably high. Cost versus benefit would be difficult to justify and disruptions due to construction and demolition activities can be anticipated to last at least one calendar year. The challenge in this scenario would be the ability to deliver the educational programs effectively, in a safe environment, during the construction of the project.

There is a strong case to be made for constructing a new replacement facility on another site.



- GRADES K-2
- THIRD GRADE
- 4TH, 5TH & 6TH GRADE
- SPECIALS & SP. ED.
- MULTI-PURPOSE
- ADMIN.
- OTHER

GRADE CONFIGURATIONS & BUILDING
 USE FOR SCHOOL YEAR 13/14

FLOOR PLAN

| AREA | # | WSFC ELEMENTARY EDUCATIONAL SPECIFICATION | NOTES |
|-----------------------|--|---|--|
| | | | Meets or exceeds 2008 WSFC Elementary Educational Specification |
| | | | Partial/compromised compliance with 2008 WSFC Elementary Educational Specification |
| | | | Fails to comply with 2008 WSFC Elementary Educational Specification |
| ADMINISTRATION | | | |
| Principal | ROOM 117 | | |
| | 1 adjacent to Conference | Conference 153 is remote | |
| | 1 visibility to main school entrance | ok | |
| | 8 door to general office | indirect | |
| | 12 closet or wardrobe | ok | |
| | 27 video outlet: 1 | ok | |
| | 27 telephone jack | ok | |
| | 27 data | ok | |
| Secretary/Reception | ROOM 114 | | |
| | 1 location: buffer near main entrance & admin | ok | |
| | 1 3 workstations | 1 workstation | |
| | 8 attendance transaction window | none | |
| | 11 6 file cabinets | one | |
| | 12 front counter with visibility to lobby entrance | ok | |
| | 28 fire/security alarm panel | ok | |
| | 27 video outlet: 1 | none | |
| | 27 telephone/data jacks | ok | |
| Nurse | ROOM 119 | | |
| | 1 office+corridor direct access | ok | |
| | 1 visible from main office | no | |
| | 11 under counter refrigerator | none | |
| | 12 desk | ok | |
| | 12 2 beds | 1 bed | |
| | 12 screening curtains | ok | |
| | 12 lockable base and wall cabinets: 3 drawer | none | |
| | 12 wardrobe 18w x 23d x 84h | closet | |
| | 22 sink w/ H+C gooseneck | ok | |
| | 27 telephone/data jacks | ok | |
| Nurse Toilet | ROOM 119A | | |
| | 1 ADA | not accessible; multiple deficiencies | |
| | 8 out swinging door | no | |
| | 9 appropriate toilet room finishes | ok-Structural Glazed Tile | |
| | 22 toilet + hand held shower @ 48" aff | no | |
| | 22 core area work sink | no | |
| Counselor | ROOM 155 | | |
| | 1 seating for 4 | (Reassigned Classroom) seating for 20+ | |
| | 1 near main office but private | remote, exterior path of travel | |
| | 27 telephone/data jacks | ok | |

| AREA | # | WSFC ELEMENTARY EDUCATIONAL SPECIFICATION | NOTES | Exhibit B |
|--------------------|-------------------------|--|--|-----------|
| Conference | | | Meets or exceeds 2008 WSFC Elementary Educational Specification | |
| | | | Partial/compromised compliance with 2008 WSFC Elementary Educational Specification | |
| | | | Fails to comply with 2008 WSFC Elementary Educational Specification | |
| | | ROOM 153 | | |
| | | 1 seating for 10 | | 6 or 8 |
| Workroom | | 1 near principal | remote, exterior path of travel | |
| | | 12 base cabinet: 6 LF | no | |
| | | 27 video outlet: 1 | no | |
| | | 27 telephone/data jacks | ok | |
| | | | | |
| Staff Lounge | | ROOM 125 | (Reassigned Classroom; combined w/ Staff Lounge) | |
| | | 1 convenient to main office | | |
| | | 10 tack board or surface | ok | |
| | | 11 copier | ok | |
| | | 11 printer | ok | |
| | | 11 fax | no | |
| | | 12 casework: 20 LF total wall and base | inadequate quantity, configuration, and/or height | |
| | | 12 mailboxes 48 @ 11w x 3h x 15d | no | |
| | | 22 core area work sink | plumbing intended for primary grades is inadequate | |
| | | 23 adequate/supplemental ventilation/exhaust | no | |
| | | 27 video outlet: 1 | ok | |
| | | 27 telephone/data jacks | ok | |
| | | | | |
| | | ROOM 125 | (Reassigned Classroom; combined w/ Workroom) | |
| | Staff Toilet | | 8 exterior windows preferred | ok |
| | | 10 tack boards: 32 sf | ok | |
| | | 11 disposal | no | |
| | | 11 dish wash | no | |
| | | 11 microwave | ok; 2 | |
| | | 11 full refrigerator | ok | |
| | | 12 casework: 10 LF base+ wall; One lockable wall cab | inadequate quantity, configuration, height | |
| | | 22 core area work sink | primary grade plumbing is inadequate | |
| | | 27 telephone/data jacks | ok | |
| | | | | |
| Itinerant Office | | ROOMS 121, 122 | | |
| | | 1 ADA | no toilet in the building meets minimal ADA requirements | |
| Technology Support | | ROOM 115 | | |
| | | 1 general office for 2 | single person office | |
| | 27 telephone/data jacks | ok | | |
| Storage | | ROOM A102 | | |
| | | 1 general office for 2 | remote, exterior path of travel | |
| | 27 telephone/data jacks | single person office | ok | |
| | | | | |
| | | ROOMS 116, 118, 132, 143, 158, 161, A103, A104, A104A, | | |

| AREA | # | WSFC ELEMENTARY EDUCATIONAL SPECIFICATION | NOTES |
|----------------|---|---|--|
| | | | Meets or exceeds 2008 WSFC Elementary Educational Specification |
| | | | Partial/compromised compliance with 2008 WSFC Elementary Educational Specification |
| | | | Fails to comply with 2008 WSFC Elementary Educational Specification |
| | | A105A, A105B, A107, A107A, A108A, A108B, A109A, A109B | |
| | | A110A, A110B, A111A, A113A, A114A | |
| | | 1 central to Administration | no |
| | | 1 secure, lockable | no |
| | | 12 casework: 15 LF wall + base | no |
| OTHER | | ROOM 123 | In School Suspension (ISS) |
| ACADEMIC | | | |
| Classroom | | ROOMS 129, 131, 135 | |
| | | 1 proximity to Media Center, Multi Use, Toilets | remote, exterior path of travel to Media Center |
| | | 1 daylighting | ok |
| | | 1 ADA | exterior path of travel; multiple issues |
| | | 1 Square Feet Summary | no data |
| | | 8 exterior operable window w/ screen | ok |
| | | 9 ceiling height 9'-4" or 10'-0" min | 8'-0" |
| | | 9 acoustics | no data |
| | | 11 coat hooks or lockers: 20 | both classroom and Multi-use/Commons |
| | | 12 blinds | ok |
| | | 12 casework: 8 to 16 LF base and wall | ok; 25" h (27" h @ 135) |
| | | 12 locking wardrobe 18w x 23d x 84h | closet |
| | | 12 operable partition(s) for team teaching: 12 LF min | none |
| | | 22 optional stainless steel sink with gooseneck | ok |
| | | 27 video outlet: 1 | ceiling mounted digital projector |
| | | 27 telephone/data jacks: 5 | 3 per classroom |
| Multi use Room | | ROOM 130 | |
| | | 1 location: classroom core | (Commons) |
| | | 1 serves maximum 6 CR | ok |
| | | 8 windows w/blinds to corridor | serves 4 CR |
| | | 8 exterior door prohibited | no |
| | | 12 base cabinets w/adjust shelves @ 40 CF per CR served | exterior door provides primary access |
| | | 12 open shelving: 20" w x 6" w x 12" d | none |
| | | 27 video outlet: 1 | furniture |
| | | 27 telephone/data jacks | no |
| | | | ok |
| Classroom | | ROOMS 136, 140, 142, 146 | |
| | | 1 proximity to Media Center, Multi Use, Toilets | remote, exterior path of travel to Media Center |
| | | 1 daylighting | ok |
| | | 1 ADA | exterior path of travel; multiple issues |
| | | 1 Square Feet Summary | no data |
| | | 8 exterior operable window w/ screen | ok |
| | | 9 ceiling height 9'-4" or 10'-0" min | 8'-0" |
| | | 9 acoustics | no data |
| | | 11 coat hooks or lockers: 20 | portable racks at Commons |

| AREA | # | WSFC ELEMENTARY EDUCATIONAL SPECIFICATION | NOTES | Exhibit B |
|-----------------------|----|--|--|-----------|
| | | | Meets or exceeds 2008 WSFC Elementary Educational Specification | |
| | | | Partial/compromised compliance with 2008 WSFC Elementary Educational Specification | |
| | | | Fails to comply with 2008 WSFC Elementary Educational Specification | |
| | 12 | blinds | ok | |
| | 12 | casework: 8 to 16 LF base and wall | ok; 27"h @ 136, 140, 29"h @ 142, 146 | |
| | 12 | locking wardrobe 18w x 23d x 84h | closet | |
| | 12 | operable partition(s)for team teaching: 12 LF min | none | |
| | 22 | optional stainless steel sink with gooseneck | ok | |
| | 27 | video outlet: 1 | ceiling mounted digital projector | |
| | 27 | telephone/data jacks: 5 | 2 per classroom | |
| | | | | |
| | | | (Commons) | |
| Multi use Room | | ROOM 141 | ok | |
| | 1 | location: classroom core | ok | |
| | 1 | serves maximum 6 CR | serves 4 CR | |
| | 8 | windows w/blinds to corridor | no | |
| | 8 | exterior door prohibited | exterior door provides primary access | |
| | 12 | base cabinets w/adjust shelves = 40 CF per CR served | none | |
| | 12 | open shelving: 20' w x 6' w x 12" d | furniture | |
| | 27 | video outlet: 1 | no | |
| | 27 | telephone/data jacks | ok | |
| | | | | |
| Reassigned Classrooms | | ROOMS 147, 151, 155, 159 | (Special Education Suite) | |
| | 1 | proximity to Media Center, Multi Use, Toilets | Remote, exterior path of travel to Media Center | |
| | 1 | day/lighting | ok | |
| | 1 | ADA | exterior path of travel; multiple issues | |
| | 1 | Square Feet Summary | no data | |
| | 8 | exterior operable window w/ screen | ok | |
| | 9 | ceiling height 9'-4" or 10'-0" min | 8' - 0" | |
| | 9 | acoustics | ok | |
| | 11 | coat hooks or lockers: 20 | none | |
| | 12 | blinds | ok | |
| | 12 | casework: 8 to 16 LF base and wall | ok; 29"h | |
| | 12 | locking wardrobe 18w x 23d x 84h | closet | |
| | 12 | operable partition(s)for team teaching: 12 LF min | none | |
| | 22 | optional stainless steel sink with gooseneck | ok | |
| | 27 | video outlet: 1 | ceiling mounted digital projector | |
| | 27 | Telephone/data jacks: 5 | 2 - 3 per classroom | |
| | | | | |
| | | | (Special Education Commons) | |
| Multi use Room | | ROOM 152 | ok | |
| | 1 | location: classroom core | ok | |
| | 1 | serves maximum 6 CR | serves 4 CR | |
| | 1 | OTHER | 7' - 3" ceiling height | |
| | 8 | windows w/blinds to corridor | no | |
| | 8 | exterior door prohibited | exterior door provides primary access | |
| | 12 | base cabinets w/adjustable shelves = 40 CF per CR served | none | |
| | 12 | open shelving: 20' w x 6' w x 12" d | furniture | |
| | 27 | video outlet: 1 | no | |
| | 27 | telephone/data jacks | ok | |

| AREA | # | WSFC ELEMENTARY EDUCATIONAL SPECIFICATION | NOTES |
|---------------------------|----|--|--|
| | | | Meets or exceeds 2008 WSFC Elementary Educational Specification |
| | | | Partial/compromised compliance with 2008 WSFC Elementary Educational Specification |
| | | | Fails to comply with 2008 WSFC Elementary Educational Specification |
| Reassigned Classrooms | | Rooms A105 (Art) + A108 | |
| | 1 | proximity to Media Center, Multi Use, Toilets | Multi use commons is assigned as Computer Lab A106 |
| | 1 | daylighting | ok |
| | 1 | ADA | entire 5 annex is only marginally accessible |
| | 1 | Square Feet Summary | no data |
| | 8 | exterior operable window w/ screen | ok |
| | 9 | ceiling height 9'-4" or 10'-0" min | 8' - 0 " |
| | 9 | acoustics | no data |
| | 11 | coat hooks or lockers: 20 | none |
| | 12 | blinds | ok |
| | 12 | casework: 8 to 16 LF base and wall | ok |
| | 12 | locking wardrobe 18w x 23d x 84h | closet |
| | 12 | operable partition(s)for team teaching: 12 LF min | none |
| | 22 | optional stainless steel sink with gooseneck | ok |
| | 27 | video outlet: 1 | ceiling mounted digital projector |
| | 27 | telephone/data jacks: 5 | 2 - 3 per classroom |
| Reassigned Multi use Room | | ROOM A106 | (Computer Lab) |
| | 1 | location: Classroom Core | ok |
| | 1 | seves maximum 6 CR | seves 2 CR |
| | 8 | windows w/blinds to corridor | ok |
| | 8 | exterior door prohibited | ok |
| | 12 | base cabinets w/adjust shelves = 40 CF per CR served | none |
| | 12 | open shelving: 20' w x 6' w x 12" d | none |
| | 27 | video Outlet: 1 | no |
| | 27 | telephone/data jacks | ok |
| Classroom | | ROOMS A109, A110, A113, A114 | |
| | 1 | proximity to Media Center, Multi Use, Toilets | ok |
| | 1 | daylighting | substandard compared with North wing classrooms |
| | 1 | ADA | entire 5 annex is only marginally accessible |
| | 1 | Square Feet Summary | no data |
| | 8 | exterior operable window w/ screen | minimal |
| | 9 | ceiling height 9'-4" or 10'-0" min | 8' - 0 " |
| | 9 | acoustics | ok |
| | 11 | coat hooks or lockers: 20 | loose lockers at Commons |
| | 12 | blinds | ok |
| | 12 | casework: 8 to 16 LF base and wall | 35" - 36" h |
| | 12 | locking wardrobe 18w x 23d x 84h | closet |
| | 12 | operable partition(s)for team teaching: 12 LF min | no |
| | 22 | optional stainless steel sink with gooseneck | ok |
| | 27 | video outlet: 1 | ceiling mounted digital projector |
| | 27 | telephone/data jacks: 5 | 3 per classroom |

| AREA | # | WSFC ELEMENTARY EDUCATIONAL SPECIFICATION | NOTES | Exhibit B |
|--|---|--|--|-----------|
| Multi use Room | | | Meets or exceeds 2008 WSFC Elementary Educational Specification | |
| | | | Partial/compromised compliance with 2008 WSFC Elementary Educational Specification | |
| | | | Fails to comply with 2008 WSFC Elementary Educational Specification | |
| | | ROOM A115 | (Commons) | |
| | | 1 location: Classroom Core | ok | |
| | | 1 serves maximum 6 CR | serves 4 CR | |
| | | 8 windows w/blinds to corridor | ok | |
| | | 8 exterior door prohibited | ok | |
| | | 12 base cabinets w/adjust shelves = 40 CF per CR served | built in unit is undersized | |
| | | 12 open shelving: 20" w x 6" w x 12" d | built in unit is undersized | |
| Student Toilets | | 27 video outlet: 1 | no | |
| | | 27 telephone/data jacks | 3 per classroom | |
| | | 102, 103, 126, 127, 133, 134, 137, 138, 144, 145, 148, 149, 156, 157, A111, A112 | | |
| | | 1 location: classroom core | ok | |
| | | 1 ADA | no toilet in the building meets minimal ADA requirements | |
| | | 22 Fixture count per MEP | no data | |
| | | 1 ADA unisex | (Rooms 121, 122 listed under ADMINISTRATION) | |
| | | ROOMS 128, 139, A112A | no toilet in the building meets minimal ADA requirements | |
| | | 1 General | inadequate at Rooms 101, 152, and South Annex | |
| | | | | |
| SPECIAL EDUCATION Self Contained Room | | ROOM 151 | (Title One) | |
| | | 9 ceiling: 10 ft. minimum height | 8' - 0" | |
| Resource Room/OTPT | | ROOM 159 | (OTPT) | |
| | | 9 ceiling: 10 ft. minimum height | 8' - 0" | |
| | | 11 support for ceiling hung apparatus | none | |
| Resource Room/OTPT | | 27 telephone/data jacks | ok | |
| | | ROOM 147 | (Resource) | |
| | | 9 ceiling: 10 ft. minimum height | 8' - 0" | |
| | | 11 support for ceiling hung apparatus | none | |
| ART EDUCATION Studio | | 27 telephone/data jacks | ok | |
| | | ROOM A105 | | |
| | | 8 north operable window w/screen | ok | |
| | | 9 ceiling: 10 ft. minimum height | 8' - 0" | |
| | | 9 wall finishes suitable for pins staples | no; CMU | |
| | | 10 48 sf whiteboard | ok | |
| | | 10 tack strip and map rail | ok | |

| AREA | # | WSFC ELEMENTARY EDUCATIONAL SPECIFICATION | NOTES |
|---------------------|----|---|--|
| | | | Meets or exceeds 2008 WSFC Elementary Educational Specification |
| | | | Partial/compromised compliance with 2008 WSFC Elementary Educational Specification |
| | | | Fails to comply with 2008 WSFC Elementary Educational Specification |
| | 11 | shelving: 20 LF x 23" D adjustable | inadequate |
| | 11 | shelving: 25 LF x 28" x72"H D adjustable | none |
| | 11 | shelving: 40% lockable | none |
| | 11 | Unstrut: 20 x 15 ft. | none |
| | 12 | blinds | ok |
| | 12 | base cabinet: 20 LF | 25 LF, residential quality |
| | 12 | lockable wardrobe 12w x23d x84h | closet |
| | 22 | 2 SS Sink @ 20 x 24 x 14d; Integral drain boards each | single unit; no drain boards |
| | 22 | SS Sink unit: 8' x 24" x 28" h | none |
| | 22 | 2 inch drain w/ clay trap | no data |
| | 22 | floor drain | none |
| | 26 | lighting: 50fc | no data; appears to be inadequate |
| | 26 | track lighting | none |
| | 26 | receptacles: 3 fourplex + 3 duplex | no fourplex receptacles |
| | 26 | plugmold at base cab | none |
| | 26 | safety net drop cords over work tables + pot wheel | no pot wheel, no drop cords |
| Teacher Work/Plan | | NO SPACE ASSIGNED | |
| | 11 | large paper cutter | |
| | 11 | mat cutter | |
| | 12 | desk | |
| Resource Area | | NO SPACE ASSIGNED | |
| | 12 | flat files, quiet work area | |
| Kiln/Clay Storage | | NO SPACE ASSIGNED | |
| | 12 | casework: 4 units @ 36wx 23d x 84" h | |
| | 12 | casework includes adjustable washable shelves | |
| | 11 | kiln and exhaust | |
| | 23 | kiln ventilation | |
| Material Storage | | NO SPACE ASSIGNED | |
| | 1 | lockable room accessible only to art studio | |
| | 11 | shelving: floor to ceiling entire perimeter | |
| | 11 | shelving is for 12, 18, 24, 36, 40 inch paper | |
| | 12 | vertical poster board storage | |
| MUSIC / PERFORMANCE | | | |
| General Music | | ROOM 101 | |
| | 1 | ceiling height 12 to 14 feet preferred | folded plate @ 8' - 0" to 11' - 0" |
| | 8 | windowless preferred | windows all 4 sides |
| | 8 | doors to corridor and gym | no corridor, remote from Gym |
| | 9 | acoustics for isolation + 2 second max reverb | no data |
| | 10 | operable wall to Gym rated 52 STC | remote from Gym |
| | 10 | whiteboard: 32 sf | ok |

| AREA | # | WSFC ELEMENTARY EDUCATIONAL SPECIFICATION | NOTES | Exhibit B |
|-----------------------|----|---|--|-----------|
| | | | Meets or exceeds 2008 WSFC Elementary Educational Specification | |
| | | | Partial/compromised compliance with 2008 WSFC Elementary Educational Specification | |
| | | | Fails to comply with 2008 WSFC Elementary Educational Specification | |
| | 10 | tack strip and map rail | ok | |
| | 12 | casework: 8-12 LF base+wall | many variances from Ed Spec; no locking cabinets | |
| | 12 | lockable wardrobe 12w x23d x84h | many variances from Ed Spec; no locking cabinets | |
| | 12 | casework: 35-40 LF x 30"d x 7'h locking w/ adjustable shelves | many variances from Ed Spec; no locking cabinets | |
| | 12 | casework: 8-12 LF x 24"d x 7'h | many variances from Ed Spec; no locking cabinets | |
| | 12 | proscenium curtain and track | none | |
| | 12 | system cabinet: 30"d for amplifier, AV | portable unit | |
| | 22 | sink: SS with gooseneck | 2 sinks, No gooseneck fittings | |
| | 22 | OTHER | no drinking fountain | |
| | 23 | HVAC: Independent control | ok | |
| | 23 | HVAC NC < 25 | no data | |
| | 23 | OTHER | no operable sash; generally poor ventilation | |
| | 26 | lighting: 50fc with no hum | no data | |
| | 26 | performance lighting: 2 clusters of 6 operable | none | |
| | 26 | emergency lighting override | none | |
| | 26 | receptacles: 3 fourplex @ 20amp | no data | |
| | 26 | receptacle 1 duplex inside system cabinet | ok | |
| | 27 | data: 5 jacks near fourplex receptacles | portable unit | |
| | 27 | speakers and audio jacks | 2 | |
| | 27 | PA: input jacks at stage + ceiling | portable unit | |
| | | | none | |
| Instrumental Music | | NO SPACE ASSIGNED | | |
| | 1 | ceiling height 10 feet preferred | | |
| | 8 | windowless preferred | | |
| | 8 | doors to corridor and music room | | |
| | 9 | acoustics for isolation + reverb 0.8 to 1.2 sec | | |
| | 26 | lighting: dual level 50/100 fc with no hum | | |
| | 23 | HVAC NC < 25 | | |
| Instrument Storage | | NO SPACE ASSIGNED | | |
| | 1 | ceiling height:10 feet preferred | | |
| | 8 | door: 3'-6" w; Locking | | |
| | 12 | shelving: 30 LF x 24"d; adjustable | | |
| Chair / Table Storage | | NO SPACE ASSIGNED | | |
| | 1 | ceiling height 9' - 4" feet preferred | | |
| | 8 | door: 3'-6" w; Locking | | |
| MEDIA CENTER | | ROOM A101 | | |
| | 1 | daylighting | | |
| | 1 | ADA | | |
| | 1 | 60 inch clearance throughout; 44 at stacks | | |
| | 1 | avoid general circulation through Media Center | | |
| | | | inadequate | |
| | | | entire S annex is only marginally accessible; pit area is not accessible | |
| | | | ok | |
| | | | ok | |

| AREA | # | WSFC ELEMENTARY EDUCATIONAL SPECIFICATION | NOTES |
|---------------------------|----|--|--|
| | | | Meets or exceeds 2008 WSFC Elementary Educational Specification |
| | | | Partial/compromised compliance with 2008 WSFC Elementary Educational Specification |
| | | | Fails to comply with 2008 WSFC Elementary Educational Specification |
| | 8 | lots of glass to corridor | no |
| | 9 | ceiling 12'-0" | 10'-0" |
| | 9 | acoustics | no data |
| | 10 | display cases at entrance | no |
| | 12 | blinds, blackout | ok |
| | 26 | lighting: 50fc for reading | no data |
| | 26 | generous receptacles | average distribution |
| | 27 | concealed computer wiring | no |
| | 27 | video outlet: 2 | ceiling projector + TV |
| | 27 | telephone/data jacks: 5 | ok |
| | | | |
| | | | |
| Stack Area | | ROOM A101 | |
| | 12 | shelving supervised from Circulation Desk | ok |
| | 12 | 6 Book Bins 24 x 48 | none |
| | 12 | range shelving 15 sections @ 36 x 48h | ok |
| | 12 | wall shelves: 19 adjustable 36 x 66h | 10 |
| | 26 | receptacles above top shelf and at toe kick 12' o.c. | no |
| | | | |
| Large Group Instructional | | PIT AREA OF A101 | |
| | 1 | central location | no |
| | 10 | white board | interactive white board |
| | 12 | tables + chairs | ok |
| | 12 | projection screen | none observed |
| | 26 | 8 duplex receptacles | ok |
| | 27 | data, CATV (2), projector, | ok |
| | | | |
| Individual/Small Group | | NO SPACE ASSIGNED | |
| | 1 | floor seating near picture book bins | |
| | 26 | 8 duplex receptacles | |
| | 27 | data, CATV (2) | |
| | | | |
| Public Access Catalog | | NO SPACE ASSIGNED | |
| | 1 | locate at main entrance, visible from Circulation Desk | |
| | 12 | island counter 36 inch min depth and ADA | |
| | 26 | duplex receptacles | |
| | 27 | data jack: 1 | |
| | | | |
| | | | |
| Circulation Desk | | ROOM A101 - SW | |
| | 1 | central work area for 1 to 3 adults | ok |
| | 12 | base cabinets: workstations at processing area | ok |
| | 12 | wall cabinets: workstations | none |

| AREA | # | WSFC ELEMENTARY EDUCATIONAL SPECIFICATION | NOTES | Exhibit B |
|---------------------------|----|---|---|-----------|
| | 12 | wall shelving: adjustable, behind circulation desk | | |
| | 27 | data jacks: 2 | none ok | |
| Library Office | | NO SPACE ASSIGNED | | |
| | 1 | visible supervision of entire Media Center | | |
| | 9 | ceiling: 9' - 4" | | |
| | 27 | telephone jack | | |
| | 27 | data | | |
| Equipment Storage | | ROOM A101B | | |
| | 1 | access to both circulation and corridor | no | |
| | 12 | base cabinet: 34" | ok | |
| | 12 | full height wall units with shelves and doors | ok | |
| | 12 | adjustable shelving, various depths for media | ok | |
| Processing/Production | | ROOM A101A | | |
| | 11 | copier space 4' x 7' | no | |
| | 12 | base cabinet: 30 inch sitting workstation | standing configuration | |
| | 12 | peninsula or island base cab with drawers | no | |
| | 12 | wall cabinets above workstations & equipment counter | ok | |
| | 12 | equipment counter | ok | |
| | 12 | vertical slot poster board storage | no | |
| | 12 | adjustable shelving: 20 lf | no | |
| | 22 | core area work sink | no | |
| | 26 | dedicated 220v circuit for copier | no | |
| | 27 | telephone jack | ok | |
| Learning Resource Storage | | NO SPACE ASSIGNED | | |
| | 12 | wall shelving | | |
| | 12 | base cabinet: computer workstation + optional preview | | |
| | 12 | wall cabinets: optional | | |
| | 12 | flat or rolled map/chart storage | | |
| | 12 | pegboard hooks for roller maps | | |
| | 12 | floor space for high density shelving system | | |
| COMPUTER LABORATORY | | ROOM A106 | | |
| | 1 | ADA | (Reassigned Multi Use Commons) | |
| | 1 | window/less recommended | S annex is only marginally accessible; No ADA workstation | |
| | 1 | no glare | ok | |
| | 1 | OTHER | skylights | |
| | 8 | windows to Media Center + corridor; 36" sill | room is a corridor not a suitable learning environment | |
| | 8 | doors to corridor and Media Center | no | |
| | 9 | Ceiling 10'h | ok | |
| | | | 8' - 0" | |

| AREA | # | WSFC ELEMENTARY EDUCATIONAL SPECIFICATION | NOTES |
|------------------------------|----|--|--|
| | | | Meets or exceeds 2008 WSFC Elementary Educational Specification |
| | | | Partial/compromised compliance with 2008 WSFC Elementary Educational Specification |
| | | | Fails to comply with 2008 WSFC Elementary Educational Specification |
| | 9 | carpet | ok |
| | 12 | 48" x 24d x 84h lockable cabinet w/ adjustable shelves | no |
| | 23 | Independent HVAC & controls | no data |
| | 26 | lighting: 50&75 ft dual level - indirect preferred | no data |
| | 26 | lighting: 3 way switch@ each door | no |
| | 26 | 110V plug mold in 3-20A circuits with power switch | no |
| | 26 | surge protection | no data |
| | 26 | duplex receptacles at teacher station | ok |
| | 27 | data: 15 to 20 drops | no |
| PHYSICAL EDUCATION | | | |
| Gymnasium | | ROOM 124 | |
| | 1 | direct outside access | ok |
| | 1 | performance at narrow end | open to Commons 110 w/curtain |
| | 1 | OTHER | lack of hard separation between 124/110 = safety concern |
| | 4 | masonry walls preferred | ok |
| | 8 | avoid doors near basketball goals | ok |
| | 9 | sport floor (undefined) | VCT |
| | 10 | 4 x 8 whiteboard - no tray | no |
| | 11 | wall mats behind bb goals | one |
| | 11 | 2 Powered adjustable bb goals | no |
| | 11 | 4 fixed secondary adjustable bb goals | ok |
| | 26 | light: 30 ft keyed switch bank | no data |
| | 26 | receptacles: recessed covered duplex, 3 @ office | office is remote |
| | 27 | data: recessed covered duplex; 2 near office | none |
| | 27 | P/A system w/ wireless microphones | none |
| | 27 | video Outlet: 1 near Data | none |
| | 27 | telephone jack | no |
| PE Equipment Storage | | ROOM 124A | |
| | 1 | size for mat storage | ok but mats are stored on 124 wall racks |
| | 8 | pair of 36" doors | ok |
| PE Office | | ROOM 112 | |
| | 1 | OTHER | remote location |
| | 8 | window view of Gyn | no |
| Performance Chair Storage | | ROOM 124B | |
| | 8 | pair of 36" doors | ok |
| Outdoor Area | | | |
| | 1 | Separate Site Document | no data |
| CAFETERIA / MULTI USE | | ROOM 110 | |
| Cafeteria/Multi-Use Room | | | |

| AREA | # | WSFC ELEMENTARY EDUCATIONAL SPECIFICATION | NOTES | Exhibit B |
|--------------------------|----|--|--|-----------|
| | | | Meets or exceeds 2008 WSFC Elementary Educational Specification | |
| | | | Partial/compromised compliance with 2008 WSFC Elementary Educational Specification | |
| | | | Fails to comply with 2008 WSFC Elementary Educational Specification | |
| | 9 | ceiling height: 12' | 17' - 8" | |
| | 1 | daylighting | ok | |
| | 8 | minimum 2 windows with operable sash | ok | |
| | 8 | door configuration for serving line flow | no | |
| | 8 | direct access to playground (remote from serving) | ok | |
| | 9 | acoustical treatments | none observed | |
| | 9 | flooring: cleanable | VCT | |
| | 22 | drinking fountain near or within 25ft of cafeteria entry | 2 DF | |
| | 27 | video outlet: 1 | none observed | |
| | 27 | telephone jack | ok | |
| | 27 | data near video | none observed | |
| | | | | |
| | | NO SPACE ASSIGNED | | |
| Special Programs Storage | 1 | Special Programs Storage Room 1 | | |
| | 1 | Special Programs Storage Room 2 | | |
| | 1 | Special Programs Storage Room 3 | | |
| | | | | |
| KITCHEN | | ROOMS 104, 105, 106, 107, 108, 111 | | |
| | 9 | ceiling height: 10' | 9' - 0' | |
| | 9 | acoustic separation from Cafeteria | no | |
| | | | | |
| Receiving area | 1 | | inadequate; congested dock & hallway | |
| Dry Storage | 1 | | ok, small | |
| Cooler/Freezer | 1 | | ok, external | |
| Management Area | 1 | | small standing area in kitchen, Office 111 is remote | |
| Preparation Kitchen Area | 1 | | ok, small | |
| Serving Kitchen Area | 1 | | ok, small | |
| Dishwashing | 1 | | ok, small | |
| Locker/Toilet Room | 1 | | none, retrofitted to storage | |
| Custodial/ Laundry Room | 1 | dedicated custodial closet | no; separate remote facilities | |
| | | | | |
| CIRCULATION | | | | |
| Entries | | | | |
| | 1 | well defined including bus/auto arrivals | (35 separate exterior door openings) needs improvement | |
| | 8 | vestibules required at high use entries | 2 of 3 | |
| | 9 | durable finishes | ok | |
| | 9 | ceiling height: 10' | 8' - 0" typical | |
| | 12 | walk off mats | no | |
| | | | | |
| Lobby | | | | |
| | 1 | adjacent to Administration | ok | |
| | 8 | lockable security gates at public areas | no | |
| | 9 | floor: hard surface | VCT | |
| | 9 | ceiling height: 10' | 8' - 0" | |

| AREA | # | WSFC ELEMENTARY EDUCATIONAL SPECIFICATION | NOTES |
|---|------------|---|--|
| | | | Meets or exceeds 2008 WSFC Elementary Educational Specification |
| | | | Partial/compromised compliance with 2008 WSFC Elementary Educational Specification |
| | | | Fails to comply with 2008 WSFC Elementary Educational Specification |
| | 10 | lighted display case | no |
| | 10 | directional signage; ADA | no |
| | 10 | plaque | exterior |
| Corridors | 163 & A163 | | |
| | 1 | width = 8' increase to 9' serving 10+ CR | ok |
| | 1 | width = 9' Main; 11' w/ lockers; 12' for lockers both | ok |
| | 8 | avoid door swings into corridor | most but not all |
| | 9 | floors: carpet or resilient | ok |
| | 9 | walls; 48" wainscot w/ gypsum board above | no |
| | 9 | ceiling 9'-4" min | 8' - 0" |
| | 9 | acoustics | no data |
| | 10 | corner guards | masonry |
| | 10 | 200 sf minimum tack boards/strips @ 3-4 locations | no |
| | 10 | signage: ADA w/ room and replaceable teacher name | no |
| | 26 | 110v receptacles < 50 lf spacing | ok |
| | 26 | lighting: 20fc | no data |
| CUSTODIAL | | | |
| FM Office | ROOM 154 | | |
| | 1 | near service entrance for storage/receiving | no, remote |
| | 10 | roof access | no, remote |
| | 26 | power and light | ok |
| | 27 | data, telephone | ok |
| | 27 | telephone/data jacks | ok |
| Custodial Closets | | | |
| | | ROOMS 120, 128, 139, A112A | |
| | 1 | each academic area + Gym/Cafeteria + Kitchen | inadequate at Kitchen, Commons 152, and Media Center area |
| | 1 | avoid electrical panels/equipment in these spaces | no |
| | 9 | 48 inch FRP wainscot around sink | no |
| | 11 | mop holder | none observed |
| | 12 | 20 lf adjustable shelving | ok |
| | 22 | 24 inch service sink | undersized; not floor mounted |
| Custodial Storage | | | |
| | | ROOM 150 | |
| | 1 | avoid electrical panels/equipment in these spaces | no |
| | 1 | cleaning equipment storage | ok |
| MECHANICAL / ELECTRICAL / COMMUNICATIONS | | | |
| M/E Rooms | | ROOM 109 | |

| AREA | # | WSFC ELEMENTARY EDUCATIONAL SPECIFICATION | NOTES | Exhibit B |
|---------------------------------------|----|--|--|-----------|
| | | | Meets or exceeds 2008 WSFC Elementary Educational Specification | |
| | | | Partial/compromised compliance with 2008 WSFC Elementary Educational Specification | |
| | | | Fails to comply with 2008 WSFC Elementary Educational Specification | |
| | 1 | grade level preferred | ok | |
| | 8 | pair HM doors | no | |
| | 9 | floor: painted concrete | ok | |
| | 9 | acoustical separation | no data | |
| | 10 | alternate roof access | no | |
| | 26 | 110V receptacle | ok | |
| | 26 | lighting: 30fc | no data | |
| Communications Room | | | | |
| | | ROOM 162 | | |
| | 1 | central location | ok | |
| | 9 | ceiling height: 10' | 8' - 0" | |
| | 9 | floor: resilient | VCT | |
| | 9 | wall: 3/4" plywood; unpainted | 50% compliant; remainder CMU | |
| | 23 | (Dedicated) A/C | no | |
| PLUMBING | | | | |
| General | | | | |
| | 9 | ceiling: Avoid lay in | ceiling grid at 156, 157 | |
| | 23 | exhaust | ok | |
| Academic Student Toilets | | | | |
| | 1 | boys + 1 girls | ok | |
| | | no doors | doors at all student toilets | |
| Academic Staff Toilets | | | | |
| | | unisex at multi use room | 126, 127 are shared with students | |
| Work Sinks w/ bubbler | | | | |
| | 1 | per CR | typical | |
| | | 13.5 x 16" x 17" w/ gooseneck, child height | review dimension requirements | |
| Public Toilets | | | | |
| | | near gym/ cafeteria./ admin | ok | |
| Admin Staff Toilet | | men + women | 121, 122 | |
| Nurse Toilet | | per ed spec | 119A | |
| Core Work Sinks | | per ed spec | none provided | |
| DF | | 2 @ Core/Admin + student toilets + Gym + Cafeteria | 110, A106 | |
| Custodial Closets | | per ed spec | 120, 128, 139, A112A; 150 has no plumbing | |
| Kitchen | | per ed spec | 104, 105, 106, 107, 108, 109 | |
| Keyed hose bibs | | Kitchen service entrance + other locations | none provided | |
| TECH WIRING | | | | |
| Video Outlet | | | | |
| | 27 | | no data | |
| Telephone jack | | 27 Telephone jack | no data | |
| Data | | 27 Data outlet: 5 | no data | |
| ELECTRICAL AND SPECIAL SYSTEMS | | | | |
| Electrical systems voltage | | 480Y/277 | no data | |

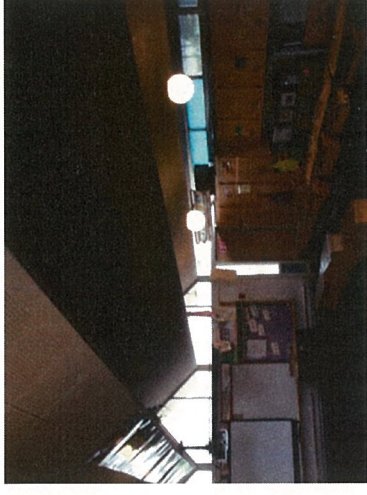
| AREA | # | WSFC ELEMENTARY EDUCATIONAL SPECIFICATION | NOTES |
|------------------------------|---|---|--|
| | | | Meets or exceeds 2008 WSFC Elementary Educational Specification |
| | | | Partial/compromised compliance with 2008 WSFC Elementary Educational Specification |
| | | | Fails to comply with 2008 WSFC Elementary Educational Specification |
| Service Entrance | | | no data |
| Wiring systems | | | no data |
| Electrical Panels | | | no data |
| Grounding | | | no data |
| Illumination | | CFL, T8, T5, LED, not incandescent | no data |
| Light Controls | | | no data |
| Audio Enhancement | | | no data |
| CATV | | | no data |
| Central Energy Management | | | no data |
| Clock | | | no data |
| Data | | | no data |
| Fire Alarm | | | no data |
| P/A | | | no data |
| Security System | | | no data |
| Communications System | | | no data |
| | | | |
| | | | |
| SECURITY | | | |
| Sight lines | | | vary from acceptable to poor |
| Security interlock vestibule | | Vestibule 113 | main entrance ok |
| Dispersed staff areas | | | multiple blind areas, especially at South |
| No secluded areas | | | 36 exterior doorways |
| Limited points of entry | | | ok |
| Open, visible, bright | | | ok |
| Access Control System | | | required ok |
| Door monitoring System | | | required no |
| | | | |
| CCTV Surveillance | | | Parking no Play ground no Main entrance no Main corridors no |

Exhibit C

Room by Room Observation: The following chart indicates the existing conditions within the individual rooms.

Room Number: 101 Room Name: Music Room

| Component | Material | Comments |
|---------------------|------------------|--|
| Floor | carpet | Fair condition, Seams fraying |
| Ceiling | 12x12 tile | Serrated roof line. Some evidence of water staining from roof leaks. 7'-10" clear height |
| Walls | CMU & storefront | |
| Doors | 1 HM 1 SCWD | |
| Casework | P-lam & Wood | Pegboard sliding doors on toddler height casework. Missing instrument storage |
| Windows & Coverings | | Single pane glazing and aluminum frames throughout with horizontal blinds |



Room Number: 102 Room Name: Restroom

| Component | Material | Comments |
|-----------|--------------|----------------------------------|
| Floor | CT | |
| Ceiling | Gyp Bd | 6'-8" high – seal at walls |
| Walls | Glazed Block | Cracked tile behind Water closet |
| Doors | HCW | No locks |
| HVAC | | Exhaust fan not working |

Room Number: 103 Room Name: Restroom

| Component | Material | Comments |
|-------------------|--------------|--|
| Floor | CT | |
| Ceiling | Gyp Bd | Water damage above door – 6'-8" high |
| Walls | Glazed Block | |
| Doors | HCW | |
| HVAC | | Loud exhaust fan in Music room. Controls for exhaust fan for both restrooms is located in this space |
| Plumbing Fixtures | | Toddler size WC, sink is outside restrooms |

Room Number: 104 Room Name: Food Storage

| Component | Material | Comments |
|-----------|----------|--------------------------|
| Floor | Epoxy | |
| Ceiling | Gyp Bd | |
| Walls | CMU | |
| Doors | SCW | |
| Casework | Wood | Pine shelving throughout |

Room Number: 105 Room Name: Kitchen

| Component | Material | Comments |
|---------------------|--------------|--|
| Floor | Epoxy | Need to seal the base at the perimeter |
| Ceiling | Gyp Bd | |
| Walls | Glazed Block | |
| Doors | SCW | |
| Casework | SS & Wood | Most of the kitchen would pass general health department standards. There are some space issues such as JC and staff bathrooms that are missing. There are a couple of wood cabinets that need to be replaced. |
| Windows & Coverings | | |



Room Number: 106 Room Name: Food Storage

| Component | Material | Comments |
|-------------------|--------------|---|
| Floor | Epoxy | |
| Ceiling | Gyp Bd | Patches and perimeter seal needs to be addressed. |
| Walls | Glazed Block | |
| Doors | SCW | |
| Casework | Wood | Only bottom shelves are the room |
| Plumbing Fixtures | | This may have been a staff toilet or Janitor's closet. Plumbing is exposed with no fixtures |

Room Number: 107 Room Name: Freezer

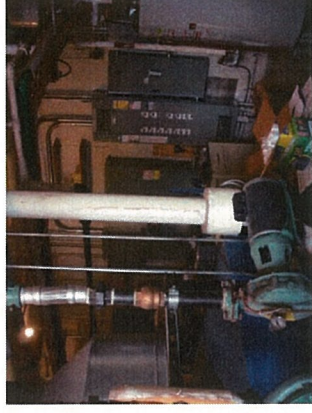
| Component | Material | Comments |
|------------------------|------------------|---|
| Floor | Conc | |
| Ceiling | Plaster | |
| Walls | Insulated Gyp | |
| Doors | Wood | Heavy duty insulated wood |
| Casework | St. St'l | Shelving is stationary stainless steel grates |
| Windows & Coverings | | |

Room Number: 108 Room Name: Janitors' Closet



| Component | Material | Comments |
|-----------|----------|--|
| Floor | Epoxy | |
| Ceiling | Gyp Bd | |
| Walls | CMU | |
| Doors | HCW | |
| Casework | Wood | Shelving doesn't meet current codes for metal/st. st'l |

Room Number: 109 Room Name: Mechanical Room

| Component | Material | Comments |
|-------------------|-----------|---|
| Floor | Conc | Needs to be refinished |
| Ceiling | Gyp Bd | |
| Walls | CMU | |
| Doors | SCW HM | Non rated door and frame at commons entry Insulated HM frame at exterior |
| Casework | Mixture | Some metal and wood cabinets and counters |
| Electrical | | Buildings main switchgear is in this room across from the main boilers |
| Plumbing Fixtures | | Hose bib is on the east wall with the hose extending caddy corner to the exterior door. This appears to be the only hose bib in the building. |



Room Number: 110 Room Name: Commons

| Component | Material | Comments | |
|---------------------|------------|--|---|
| Floor | VCT | |  |
| Ceiling | 12x12 tile | Ceiling is 18' to 20' high | |
| Walls | CMU/Brick | Exposed electrical conduit throughout | |
| Doors | HM/Glass | Exterior doors | |
| Windows & Coverings | HM | Single pane glass in hollow metal frames | |
| Plumbing Fixtures | | ADA drinking fountain near kitchen entry |  |

Room Number: 111 Room Name: Food Service Office

| Component | Material | Comments |
|---------------------|--------------|--------------------------------------|
| Floor | VCT | |
| Ceiling | 12x12 tile | |
| Walls | Gyp Bd | |
| Doors | HCW | |
| Casework | | |
| Windows & Coverings | Alum & Glass | Single pane glass in aluminum frames |



Room Number: 112 Room Name: PE Office

| Component | Material | Comments |
|---------------------|--------------|---|
| Floor | VCT | |
| Ceiling | 12x12 tile | |
| Walls | Gyp Bd | At 2 walls |
| Doors | HCW | |
| Casework | | |
| Windows & Coverings | Alum & Glass | 2 exterior walls are single pane aluminum and glass |
| Lighting | Incan fl | Ceiling fan |
| HVAC | Hydronic | No cooling, transfer grill with food service office |

Room Number: 113 Room Name: Main Entry Vestibule

| Component | Material | Comments |
|---------------------|--------------|---|
| Floor | VCT | |
| Ceiling | 12x12 Tile | |
| Walls | Brick & Wood | Painted plywood panels on north side against PE office |
| Doors | HM & Glass | Single pane glass in HM frame in both sets of doors |
| Windows & Coverings | HM & Glass | Single pane glass in HM frames at sides of both sets of doors |

Room Number: 114 Room Name: Reception/Secretary

| Component | Material | Comments | |
|---------------------|--------------|---|---|
| Floor | Carpet | | |
| Ceiling | 12x12 Tile | 8' High | |
| Walls | Brick & HM | Brick at east and west walls & HM and glass at north wall |  |
| Doors | SCW | | |
| Casework | Wood plywood | Modular at reception desk and plywood w/ p-lam at teachers area | |
| Windows & Coverings | Alum & glass | Insulated awning windows with screens |  |

Room Number: 115 Room Name: Itinerant Office

| Component | Material | Comments |
|---------------------|--------------|---|
| Floor | Carpet | |
| Ceiling | 12x12 Tile | |
| Walls | CMU | CMU at east & west walls, closets at north wall |
| Doors | SCW | |
| Windows & Coverings | Alum & glass | Insulated glass awnings with screens |

Room Number: 116 Room Name: Storage in Principal's Office

| Component | Material | Comments |
|-----------|----------|------------------------|
| Floor | Carpet | |
| Ceiling | Gyp Bd | |
| Walls | CMU | |
| Doors | SCW | |
| Casework | Wood | Particle board shelves |


Room Number: 117 Room Name: Principal's Office

| Component | Material | Comments |
|---------------------|------------|--|
| Floor | Carpet | |
| Ceiling | 12x12 tile | |
| Walls | CMU | 3 walls CMU - Exterior wall Gyp Bd. |
| Doors | SCW | |
| Casework | P-Lam | Newer casework in good condition |
| Windows & Coverings | | New exterior wall with horizontal blinds |

Room Number: 118 Room Name: Storage in Principal's Office


| Component | Material | Comments |
|-----------|----------|-------------------------|
| Floor | Carpet | |
| Ceiling | Gyp Bd | |
| Walls | CMU | |
| Doors | SCW | |
| Casework | Melamine | Adjustable shelf system |

Room Number: 119 Room Name: Nurse's Office

| Component | Material | Comments | |
|---------------------|--------------|--|---|
| Floor | VCT | |  |
| Ceiling | 12x12 tile | | |
| Walls | CMU | Vertical crack in SW corner | |
| Doors | SCW | | |
| Casework | P-lam & wood | Poor condition | |
| Windows & Coverings | fair | 3 windows of 16"x32" single pane at 2 units and casement at 1 window. | |
| Special Note | | Lost and found is located in this area in lieu of a second cot. No fresh air in this area. | |


Room Number: 119A Room Name: Nurse's Toilet

| Component | Material | Comments |
|-----------|--------------|-----------------------|
| Floor | VCT | Fair condition |
| Ceiling | Gyp Bd | Seal around perimeter |
| Walls | Glazed Block | |
| Doors | SCW | |



Room Number: 120 Room Name: Janitor's Closet

| Component | Material | Comments |
|--------------|----------|--|
| Floor | Conc | |
| Ceiling | Gyp Bd | |
| Walls | CMU | |
| Doors | SCW | |
| Casework | Wood | |
| Special Note | | Need a mop rack, floor drain and appropriate shelving. Electrical panel is located in this room. |



Room Number: 121 Room Name: Men's/Boy's Restroom

| Component | Material | Comments |
|--------------|--------------|---|
| Floor | CT | |
| Ceiling | Gyp Bd | |
| Walls | Glazed Block | |
| Doors | SCW | |
| Special Note | | This restroom is for public and student use |



Room Number: 122 Room Name: Women's/Girl's Restrooms

| Component | Material | Comments |
|--------------|--------------|---|
| Floor | CT | |
| Ceiling | Gyp Bd | |
| Walls | Glazed Block | |
| Doors | SCW | |
| Casework | | |
| Special Note | | This restroom is for public and student use |

Room Number: 123 Room Name: In School Suspension

| Component | Material | Comments |
|--------------|----------|--|
| Floor | Carpet | |
| Ceiling | Gyp Bd | |
| Walls | CMU | |
| Doors | SCW | Sidelight |
| Special Note | | Some exhaust is provided but no supply air. The roof drain is located in one corner. |

Room Number: 124 Room Name: MultiPurpose Room

| Component | Material | Comments |
|--------------|-------------|--|
| Floor | VCT | |
| Ceiling | 12x12 tile | Some tiles are missing and some are beginning to separate from the mastic. |
| Walls | Block/Brick | |
| Doors | SCW | |
| Special Note | | EWC is located in the commons. There is only a theater curtain dividing multipurpose from the commons. |



Room Number: 124A Room Name: Gym Storage

| Component | Material | Comments |
|---------------|----------|---|
| Floor | Conc | |
| Ceiling | Conc | |
| Walls | CMU | |
| Doors | SCW | |
| Casework | Plywood | Plywood & Particle Board shelving |
| Special Notes | | Install tube protection on the lighting |

Room Number: 124B Room Name: Storage

| Component | Material | Comments |
|---------------|----------|--|
| Floor | Conc | |
| Ceiling | Conc | |
| Walls | CMU | |
| Doors | SCW | |
| Special Notes | | Need protective covers on lighting. Access to HVAC equipment above storage area. |

Room Number: 125 Room Name: Staff Lounge

| Component | Material | Comments |
|---------------------|--------------|--|
| Floor | Carpet | |
| Ceiling | 12x12 tile | |
| Walls | CMU | 3 walls CMU - Exterior wall Gyp Bd. |
| Doors | SCW | |
| Casework | P-lam & wood | Casework is sized for toddlers |
| Windows & Coverings | Alum & glass | New exterior wall with horizontal blinds |



Room Number: 126 Room Name: Girls' Restroom

| Component | Material | Comments |
|---------------|--------------|---|
| Floor | Epoxy | Severely stained and chipping |
| Ceiling | Gyp Bd | Several holes |
| Walls | Glazed block | Vertical cracks in NE corner |
| Doors | SCW | Lites in the doors |
| Special Notes | | Faucet is constantly dripping, both doors have windows in them. |

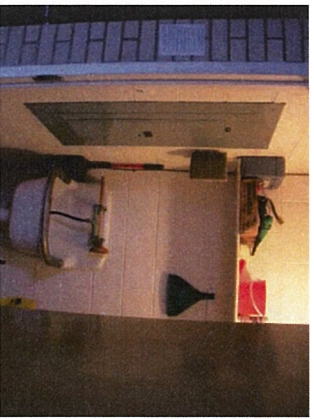


Room Number: 127 Room Name: Boys' Restrooms

| Component | Material | Comments |
|---------------|--------------|--|
| Floor | Epoxy | Poor condition, chipped and cracked throughout |
| Ceiling | Gyp Bd | |
| Walls | Glazed Block | |
| Doors | SCW | |
| Special Notes | | No locking hardware on partition, doors have windows in them, leaking faucet |

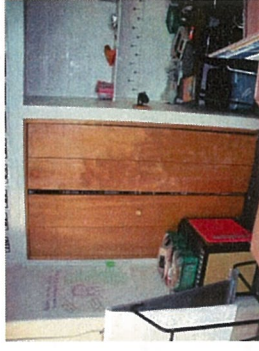
Room Number: 128 Room Name: Janitor's Closet

| Component | Material | Comments |
|-----------|----------|--|
| Floor | Conc | |
| Ceiling | Gyp Bd | |
| Walls | CMU | |
| Doors | SCW | |
| Casework | Wood | Wood shelves and long particle board shelf |



Room Number: 129 Room Name: Third Grade Classroom

| Component | Material | Comments |
|---------------------|--------------|---|
| Floor | Carpet | |
| Ceiling | 12x12 tile | 8' high ceiling |
| Walls | CMU | 3 walls are CMU, new exterior wall |
| Doors | SCW | Hollow core bi-folds on storage don't fit |
| Casework | P-lam & wood | Toddler size |
| Windows & Coverings | Alum & glass | New exterior insulated windows with horizontal blinds |

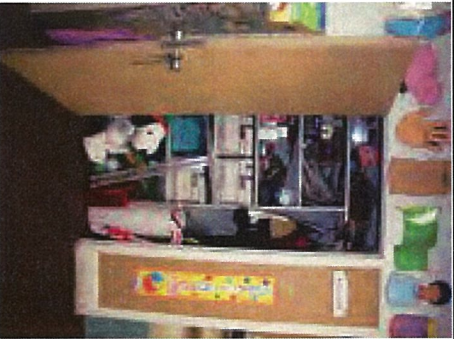


Room Number: 130 Room Name: Pod Commons

| Component | Material | Comments |
|---------------------|-------------|--|
| Floor | Sheet vinyl | |
| Ceiling | 12x12 tile | 8' high |
| Walls | Brick | Brick at 3 sides and new exterior wall |
| Doors | HIM & glass | HIM doors with single pane glass at full glass door to exterior |
| Windows & Coverings | | New exterior insulated windows with horizontal blinds New skylights added (Solatubes) |



Room Number: 131 Room Name: Title I

| Component | Material | Comments | |
|---------------------|--------------|---|--|
| Floor | Carpet | | |
| Ceiling | 12x12 tile | 8' high | |
| Walls | CMU | CMU at 3 walls, new exterior wall | |
| Doors | HM & SCW | SCW to commons and HM to exterior | |
| Casework | P-lam & wood | Toddler size | |
| Windows & Coverings | | New exterior insulated windows with horizontal blinds | |
| Special Note | | Shower curtain to the storage closet |  |

Room Number: 132 Room Name: Storage

| Component | Material | Comments |
|-----------|-------------|----------|
| Floor | Sheet vinyl | |
| Ceiling | Gyp Bd | |
| Walls | CMU | |
| Doors | SCW | |
| Casework | Wood | |

Room Number: 133 Room Name: Girls' Restroom

| Component | Material | Comments |
|-----------|--------------|----------------------------|
| Floor | Epoxy | Cracking around WC |
| Ceiling | Gyp Bd | |
| Walls | Glazed Block | |
| Doors | SCW | Doors have windows in them |

Room Number: 134 Room Name: Boys' Restroom

| Component | Material | Comments |
|--------------|--------------|--------------------------|
| Floor | Epoxy | |
| Ceiling | Gyp Bd | |
| Walls | Glazed block | |
| Doors | SCW | Doors have lites in them |
| Special Note | | Faucet leaking |

Room Number: 135 Room Name: Third Grade Classroom

| Component | Material | Comments |
|---------------------|--------------|---|
| Floor | Carpet | |
| Ceiling | 12x12 tile | 8' high |
| Walls | CMU | CMU at 3 walls, new exterior wall |
| Doors | SCW & HM | HM to exterior |
| Casework | P-Lam & wood | Toddler size |
| Windows & Coverings | | New exterior insulated windows with horizontal blinds |

Room Number: 136 Room Name: Kindergarten Classroom

| Component | Material | Comments |
|---------------------|--------------|---|
| Floor | Carpet | |
| Ceiling | 12x12 tile | 8' high, some tiles are loose |
| Walls | CMU | CMU at 3 walls, new exterior wall |
| Doors | SCW & HM | SCW at the commons, HM at the exterior and HCW bi-folds at the closet |
| Casework | P-Lam & wood | Toddler size |
| Windows & Coverings | | New exterior insulated windows with horizontal blinds |

Room Number: 137 Room Name: Girls' Restroom

| Component | Material | Comments |
|-----------|--------------|--------------------------------------|
| Floor | Epoxy | Stained and chipped |
| Ceiling | Gyp Bd | |
| Walls | Glazed block | Cracking at corners on the east side |
| Doors | SCW | Both doors have lites in them |

Room Number: 138 Room Name: Boys' Restroom

| Component | Material | Comments |
|---------------|--------------|-----------------------------|
| Floor | Epoxy | Stained and chipped |
| Ceiling | Gyp Bd | |
| Walls | Glazed Block | Cracks in east corners |
| Doors | SCW | Lites in both doors |
| Special Notes | | Faucet and trap are leaking |

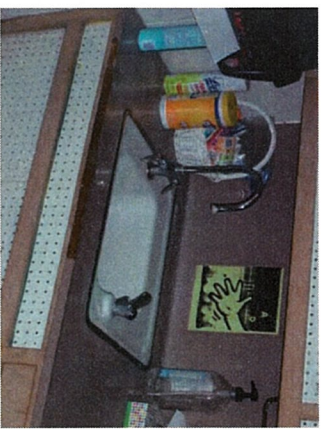
Room Number: 139 Room Name: Janitor's Closet

| Component | Material | Comments |
|---------------|----------|--|
| Floor | Conc | |
| Ceiling | Gyp Bd | |
| Walls | CMU | |
| Doors | SCW | |
| Casework | Wood | Wood shelving |
| Special Notes | | Electric panel directly above utility sink |



Room Number: 140 Room Name: Kindergarten Classroom

| Component | Material | Comments |
|---------------------|--------------|--|
| Floor | Carpet | |
| Ceiling | 12x12 tile | 8' high |
| Walls | CMU | CMU at 3 walls, new exterior wall |
| Doors | HM & SCW | Insulated HM to exterior, SCW at commons |
| Casework | P-Lam & wood | Toddler size – top edge of counter top is delaminating at sink |
| Windows & Coverings | | New exterior insulated windows with horizontal blinds |



Room Number: 141 Room Name: Pod Commons

| Component | Material | Comments |
|---------------------|-------------|---|
| Floor | Sheet vinyl | |
| Ceiling | 12x12 tile | 8' high |
| Walls | Brick | Brick at 3 walls, new exterior wall |
| Doors | HM & Glass | HM door has single pane glass, SCW at the storage bi-pass doors |
| Windows & Coverings | | New exterior insulated windows with horizontal blinds |
| Special Notes | | New skylights added (Solatubes) |

Room Number: 142 Room Name: Second Grade Classroom

| Component | Material | Comments |
|---------------------|--------------|---|
| Floor | Carpet | |
| Ceiling | 12x12 tile | 8' high |
| Walls | CMU | CMU at 3 walls, new exterior wall |
| Doors | HM & SCW | Insulated HM at exterior, SCW at commons |
| Casework | P-Lam & wood | Toddler size |
| Windows & Coverings | | New exterior insulated windows with horizontal blinds |

Room Number: 143 Room Name: Storage

| Component | Material | Comments |
|-----------|-------------|----------|
| Floor | Sheet vinyl | |
| Ceiling | Gyp Bd | |
| Walls | CMU | |
| Doors | Wood | |

Room Number: 144 Room Name: Boys' Restroom

| Component | Material | Comments |
|-----------|--------------|-------------------------------|
| Floor | Epoxy | Stained and cracked |
| Ceiling | Gyp Bd | |
| Walls | Glazed block | |
| Doors | SCW | Both doors have lites in them |

Room Number: 145 Room Name: Girls' Restroom

| Component | Material | Comments |
|---------------|--------------|--|
| Floor | Epoxy | Stained and cracked |
| Ceiling | Gyp Bd | |
| Walls | Glazed Block | Crack in northwest corner |
| Doors | SCW | Lites in both doors |
| Special Notes | | Lack of exhaust in this room and faucet is leaking |



Room Number: 146 Room Name: First Grade Classroom

| Component | Material | Comments |
|---------------------|--------------|---|
| Floor | Carpet | |
| Ceiling | 12x12 tile | 8' high |
| Walls | CMU | CMU at 3 walls, new exterior wall |
| Doors | HM & SCW | HM insulated at exterior, SCW to commons |
| Casework | P-Lam & wood | |
| Windows & Coverings | | New exterior insulated windows with horizontal blinds |

Room Number: 147 Room Name: Resource Room

| Component | Material | Comments |
|---------------------|--------------|---|
| Floor | Carpet | |
| Ceiling | 12x12 tile | 8' high |
| Walls | CMU | CMU at 3 walls, new exterior wall |
| Doors | HM & SCW | HM insulated at exterior, SCW to commons |
| Casework | P-Lam & wood | 29" high counter top |
| Windows & Coverings | | New exterior insulated windows with horizontal blinds |

Room Number: 148 Room Name: Girls' Restroom

| Component | Material | Comments | | |
|---------------|----------|---|---|---|
| Floor | Epoxy | Cracked – replaced in 2010 | | |
| Ceiling | Gyp Bd | | | |
| Walls | FRP | Plastic panels full height | | |
| Doors | SCW | Translucent lite in door to room 147. Hasp lock on door and handle on door to room 151 | | |
| Special Notes | | This room was renovated in 2010 as the only handicap accessible restroom in the building. The shower does not meet the requirements for ADA |  |  |

Room Number: 149 Room Name: Boys' Restroom

| Component | Material | Comments |
|-----------|--------------|------------------------------|
| Floor | Epoxy | Cracked, stained and chipped |
| Ceiling | Gyp Bd | |
| Walls | Glazed Block | |
| Doors | SCW | Lites in both doors |

Room Number: 150 Room Name: Storage

| Component | Material | Comments |
|-----------|----------|---|
| Floor | Conc | There is a steel access door to the under floor plumbing tunnel |
| Ceiling | Gyp Bd | |
| Walls | CMU | |
| Doors | SCW | |
| Casework | Wood | Wood shelves |

Room Number: 151 Room Name: Title I

| Component | Material | Comments |
|---------------------|--------------|--|
| Floor | Carpet | |
| Ceiling | 12x12 tile | 8' high |
| Walls | Gyp Bd/ CMU | Gyp walls at extended HC bathroom, CMU at remaining interior walls and new exterior wall |
| Doors | HM & SCW | HM to exterior and SCW to commons |
| Casework | P-Lam & wood | |
| Windows & Coverings | | New exterior insulated windows with horizontal blinds |
| Special Notes | | Borrowed lites to Resource Room |



Room Number: 152 Room Name: Pod Commons

| Component | Material | Comments |
|---------------------|-------------|--|
| Floor | Sheet vinyl | |
| Ceiling | 2x4 ACT | 7'-4" high |
| Walls | Brick | Brick at 3 sides and new exterior wall |
| Doors | HM | HM doors to exteriors at north and south walls |
| Windows & Coverings | WD | Insulated wood casements with integral blinds between glass panels – Aluminum clad at exterior |
| Special Notes | | Electric unit heater at north wall |

Room Number: 153 Room Name: Facility Director's Conference Room

| Component | Material | Comments |
|---------------------|------------|--|
| Floor | Carpet | |
| Ceiling | 2x4 ACT | 8' high |
| Walls | Gyp Bd | |
| Doors | HM | |
| Casework | P-Lam | 1989 addition has P-lam modular furniture |
| Windows & Coverings | | Insulated wood casements with integral blinds between glass panels – Aluminum clad at exterior |

Room Number: 154 Room Name: Facility Director's Office

| Component | Material | Comments |
|---------------------|------------|--|
| Floor | Carpet | |
| Ceiling | 2x4 ACT | |
| Walls | Gyp Bd | |
| Doors | HM | |
| Windows & Coverings | | Insulated wood casements with integral blinds between glass panels – Aluminum clad at exterior |

Room Number: 155 Room Name: Counseling Office

| Component | Material | Comments |
|---------------------|------------|--|
| Floor | Carpet | Original carpet from 1989 |
| Ceiling | 2x4 ACT | |
| Walls | Gyp Bd | |
| Doors | HM | |
| Casework | P-Lam | |
| Windows & Coverings | | Insulated wood casements with integral blinds between glass panels – Aluminum clad at exterior |

Room Number: 156 Room Name: Boys' Restroom

| Component | Material | Comments |
|-----------|------------|--|
| Floor | 2x2 CT | |
| Ceiling | 2x4 ACT | ACT is not appropriate for wet areas, stained at north end |
| Walls | 2x2 CT | Some tiles missing at door to room 159 |
| Doors | SCW | |

Room Number: 157 Room Name: Girls' Restroom

| Component | Material | Comments |
|---------------|------------|--|
| Floor | 2x2 CT | |
| Ceiling | 2x4 ACT | ACT is not appropriate for wet areas, stained at north end |
| Walls | 2x2 CT | |
| Doors | SCW | |
| Special Notes | | Hardware at toilet partition missing |

Room Number: 158 Room Name: Storage

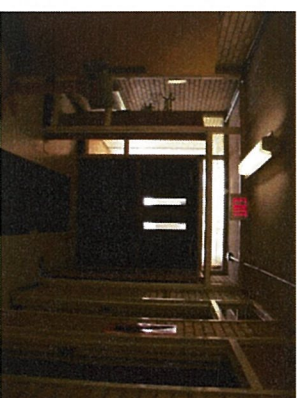
| Component | Material | Comments |
|-----------|----------|---------------------------------------|
| Floor | Carpet | |
| Ceiling | Gyp Bd | |
| Walls | Gyp Bd | |
| Doors | SCW | |
| Casework | wood | Plywood shelves on brackets and clips |

Room Number: 159 Room Name: Speech Room

| Component | Material | Comments |
|---------------------|------------|--|
| Floor | Carpet | |
| Ceiling | 2x4 ACT | 8' high |
| Walls | Gyp Bd | |
| Doors | HM | HM doors to commons and exterior |
| Casework | P-lam | |
| Windows & Coverings | wood | Insulated wood casements with integral blinds between glass panels – Aluminum clad at exterior |

Room Number: 160 Room Name: Vestibule to Annex

| Component | Material | Comments |
|---------------------|---------------|--|
| Floor | VCT | |
| Ceiling | 12x12 tile | |
| Walls | Brick | East and west sides |
| Doors | HM & SCW | HM to courtyard and SCW to corridor |
| Windows & Coverings | HM & glass | Single pane glass in the HM frames at sidelights and transom |



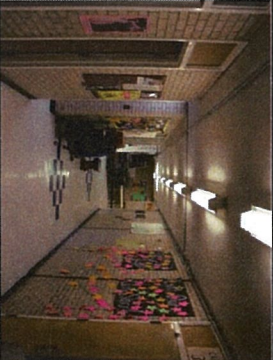
Room Number: 161 Room Name: Storage/Laundry

| Component | Material | Comments |
|---------------|----------|---|
| Floor | VCT | |
| Ceiling | Gyp Bd | |
| Walls | CMU | |
| Doors | SCW | Bi-pass doors needs bottom track |
| Casework | Wood | Shelves above washer and dryer |
| Special Notes | | Dryer vent goes into boiler room with panty hose filter |

Room Number: 162 Room Name: Server Closet

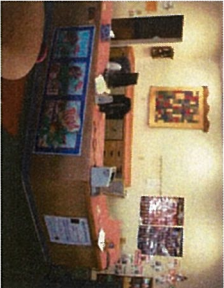
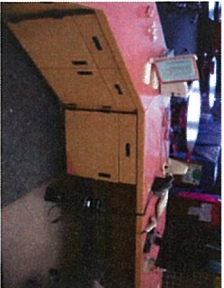
| Component | Material | Comments |
|---------------|----------|---|
| Floor | VCT | |
| Ceiling | Gyp Bd | |
| Walls | CMU | Plywood wall between server and storage/WD room 161 |
| Doors | SCW | Bi-pass doors |
| Special Notes | | Needs air cooling for server |

Room Number: 163 Room Name: Corridor

| Component | Material | Comments | |
|-----------|------------|----------|---|
| Floor | VCT | |  |
| Ceiling | 12x12 tile | | |
| Walls | Brick | | |

Room Number: A101 Room Name: Library

Annex Building

| Component | Material | Comments | |
|---------------------|--------------|--|---|
| Floor | carpet | Floor is tiered at the reading area |  |
| Ceiling | 2x4 ACT | 10' high | |
| Walls | Gyp Bd | HM frames at 60% of computer room wall | |
| Doors | HM & SCW | HM at exteriors |  |
| Casework | P-Lam & wood | Delamination of veneers at circulation desk | |
| Windows & Coverings | Wood | Insulated wood casements with integral blinds between glass panels – Aluminum clad at exterior | |

Room Number: A101A Room Name: Library Storage

| Component | Material | Comments |
|-----------|-------------|---|
| Floor | Sheet vinyl | |
| Ceiling | 2x4 ACT | |
| Walls | Gyp Bd | |
| Doors | SCW | To reading area and trimmed opening to circulation desk |
| Casework | P-Lam | Delaminating veneers in casework |



Room Number: A101B Room Name: Library Storage

| Component | Material | Comments |
|-----------|-------------|----------------------|
| Floor | Sheet vinyl | |
| Ceiling | 2x4 ACT | |
| Walls | Gyp Bd | |
| Doors | SCW | |
| Casework | Wood | All casework is FF&E |

Room Number: A102 Room Name: Office

| Component | Material | Comments |
|---------------------|-------------|--|
| Floor | Sheet Vinyl | |
| Ceiling | 2x4 ACT | |
| Walls | Gyp Bd | Windows in HM frames at library wall |
| Doors | HM & SCW | HM to exterior and SCW to storage |
| Windows & Coverings | | Insulated wood casements with integral blinds between glass panels – Aluminum clad at exterior |
| Special Notes | | Access to this room from the interior is through a storage room |

Room Number: A103 Room Name: Storage

| Component | Material | Comments |
|---------------------|-------------|--|
| Floor | Sheet Vinyl | |
| Ceiling | 2x4 ACT | |
| Walls | Gyp Bd | |
| Doors | SCW | To vestibule and office |
| Windows & Coverings | | Windows to library are HM & glass with horizontal blinds |

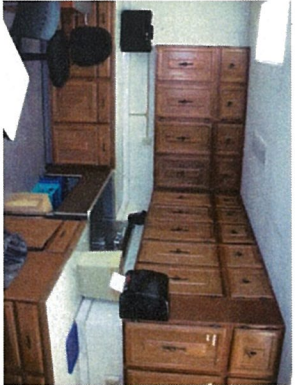

Room Number: A104 Room Name: Storage – No Access

| Component | Material | Comments |
|-----------|----------|----------|
| Floor | | |
| Ceiling | | |
| Walls | | |
| Doors | | |
| Casework | | |

Room Number: A104A Room Name: Storage – No Access

| Component | Material | Comments |
|-----------|----------|----------|
| Floor | | |
| Ceiling | | |
| Walls | | |
| Doors | | |
| Casework | | |

Room Number: A105 Room Name: Art Classroom

| Component | Material | Comments | |
|---------------------|--------------|---|---|
| Floor | Sheet Vinyl | | |
| Ceiling | 2x4 ACT | 8' high | |
| Walls | CMU | CMU at 3 walls, new exterior wall | |
| Doors | SCW | SCW to computer lab and hall | |
| Casework | P-Lam & wood | Residential casework |  |
| Windows & Coverings | | New exterior insulated windows with horizontal blinds | |
| Special Notes | | No kiln or flat storage |  |

Room Number: A105A Room Name: Storage

| Component | Material | Comments |
|-----------|-------------|-----------------------------------|
| Floor | Sheet Vinyl | |
| Ceiling | Gyp Bd | |
| Walls | CMU | |
| Doors | None | |
| Casework | Wood | Wood shelves on standards & clips |

Room Number: A105B Room Name: Storage/Wardrobe

| Component | Material | Comments |
|-----------|-------------|----------|
| Floor | Sheet Vinyl | |
| Ceiling | Gyp Bd | |
| Walls | CMU | |
| Doors | SCW | |
| Casework | Plwd | |

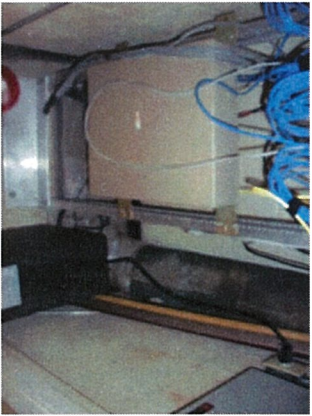
Room Number: A106 Room Name: Computer Lab

| Component | Material | Comments |
|---------------|------------|---|
| Floor | Carpet | |
| Ceiling | 2x4 ACT | 8' high |
| Walls | Brick & HM | Brick on 3 walls and HM & glass at west wall |
| Doors | HM & SCW | HM to exterior is wrong swing for egress, SCW to hall |
| Casework | | All casework is residential desks |
| Special Notes | | Natural daylighting by Solatube, Hydronic heat located at an interior wall. |

Room Number: A107 Room Name: Storage

| Component | Material | Comments |
|-----------|----------|----------------------------------|
| Floor | Epoxy | |
| Ceiling | Gyp Bd | |
| Walls | CMU | |
| Doors | SCW | |
| Casework | P-lam | Old wood cabinets and p-lam tops |

Room Number: A107A Room Name: Storage/Server

| Component | Material | Comments | |
|---------------|----------|--|---|
| Floor | ACT | Suspect of asbestos tile | |
| Ceiling | Wood | Painted plywood panel | |
| Walls | CMU | | |
| Doors | | Door is missing | |
| Special Notes | | This is a server rack and server. It appears that the plumbing tunnel is vented in this closet |  |

Room Number: A108 Room Name: Unassigned Classroom

| Component | Material | Comments |
|---------------------|------------|---|
| Floor | Carpet | |
| Ceiling | 2x4 ACT | 8' high |
| Walls | CMU HM | CMU at 3 walls and HM and glass at hall |
| Doors | SCW | To hall and computer room |
| Casework | Wood | |
| Windows & Coverings | HM | New exterior insulated windows with horizontal blinds |





Room Number: A108A Room Name: Storage

| Component | Material | Comments |
|-----------|----------|-----------------------------------|
| Floor | Carpet | |
| Ceiling | Gyp Bd | |
| Walls | CMU | |
| Doors | HCW | |
| Casework | wood | Wood shelves on standards & clips |

Room Number: A108B Room Name: Storage/Wardrobe

| Component | Material | Comments |
|-----------|----------|----------|
| Floor | Carpet | |
| Ceiling | Gyp Bd | |
| Walls | CMU | |
| Doors | SCW | |
| Casework | Plywood | |

Room Number: A109 Room Name: Fourth Grade Classroom

| Component | Material | Comments | |
|---------------------|--------------|---|---|
| Floor | Carpet | | |
| Ceiling | 12x12 tile | 8' high | |
| Walls | CMU | CMU at 3 walls, new exterior wall | |
| Doors | HM & SCW | SCW to hall and commons and HM to exterior | |
| Casework | P-Lam & wood | | |
| Windows & Coverings | Alum & Glass | Aluminum and insulated glass with screens, 1 small window for entire room | |
| Special Notes | | Borrowed lites to room 113 |  |
| | | |  |

Room Number: A109A Room Name: Storage/Wardrobe

| Component | Material | Comments |
|-----------|----------|--------------------------|
| Floor | ACT | Suspect of asbestos tile |
| Ceiling | Gyp Bd | |
| Walls | CMU | |
| Doors | SCW | |
| Casework | Wood | |

Room Number: A109B Room Name: Storage

| Component | Material | Comments |
|-----------|----------|-------------------------------------|
| Floor | ACT | Suspect of asbestos tile |
| Ceiling | Gyp Bd | |
| Walls | CMU | |
| Doors | HCW | |
| Casework | Wood | Wood shelves on standards and clips |

Room Number: A110A Room Name: 5th & 6th Grade Math Classrooms

| Component | Material | Comments |
|---------------------|--------------|---|
| Floor | Carpet | |
| Ceiling | 12x12 tile | 8' high, some tiles are loose and falling |
| Walls | CMU & HM/GI | CMU at 3 walls and HM and glass to hallway |
| Doors | HM & SCW | HM to exterior and SCW to commons and hall |
| Casework | P-Lam & wood | Residential casework |
| Windows & Coverings | HM | Insulated glass awning and screen |
| Special Notes | | Fan coil unit is located on an interior wall – no fresh air |



Room Number: A110A Room Name: Storage/Wardrobe

| Component | Material | Comments |
|-----------|----------|--------------------------|
| Floor | ACT | Suspect of asbestos tile |
| Ceiling | Gyp Bd | |
| Walls | CMU | |
| Doors | SCW | |
| Casework | Wood | |

Room Number: A110B Room Name: Storage

| Component | Material | Comments |
|-----------|----------|-------------------------------------|
| Floor | ACT | Suspect of asbestos tile |
| Ceiling | Gyp Bd | |
| Walls | CMU | |
| Doors | HCW | |
| Casework | Wood | Wood shelves on standards and clips |

Room Number: A111 Room Name: Girls' Restroom

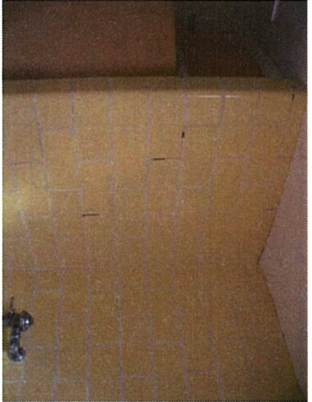
| Component | Material | Comments |
|---------------|--------------|--|
| Floor | Sheet Vinyl | |
| Ceiling | Gyp Bd | |
| Walls | Glazed Block | |
| Doors | SCW | |
| Special Notes | | Natural daylighting with Solatube, multiple fixture room |



Room Number: A111A Room Name: No longer exists, removed in renovation

| Component | Material | Comments |
|-------------------|----------|----------|
| Floor | | |
| Ceiling | | |
| Walls | | |
| Doors | | |
| Casework | | |
| Windows Coverings | | |

Room Number: A112 Room Name: Boys' Restroom

| Component | Material | Comments | |
|---------------|--------------|--|---|
| Floor | Sheet Vinyl | |  |
| Ceiling | Gyp Bd | Needs to be refurbished | |
| Walls | Glazed Block | Some cracking at wall near north end of room | |
| Doors | SCW | | |
| Special Notes | | Natural daylighting with Solatube, multiple fixture room, Electric panel is located at the north wall of storage closet. | |

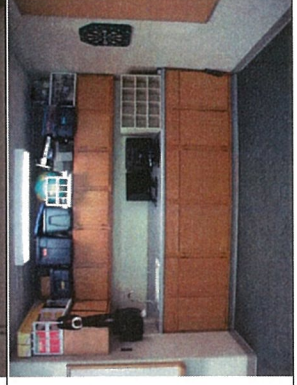
Room Number: A112A Room Name: Storage

| Component | Material | Comments |
|---------------|--------------|--|
| Floor | Sheet Vinyl | |
| Ceiling | Gyp Bd | |
| Walls | Glazed Block | |
| Doors | SCW | |
| Special Notes | | Vent from plumbing tunnel extends up through roof, Utility sink and electrical shut off switches are located in this area. |



Room Number: A113 Room Name: 5th & 6th Grade Science & Social Studies Classroom

| Component | Material | Comments |
|---------------------|--------------|---|
| Floor | Carpet | |
| Ceiling | 12x12 tile | 8' high, some tiles are loose and falling |
| Walls | CMU | CMU at 3 walls, new exterior wall |
| Doors | HM & SCW | HM to exterior and SCW to commons |
| Casework | P-Lam & wood | Residential casework |
| Windows & Coverings | HM | New exterior insulated windows with horizontal blinds |



Room Number: A113A Room Name: Storage

| Component | Material | Comments |
|-----------|----------|--|
| Floor | Carpet | |
| Ceiling | Gyp Bd | |
| Walls | CMU | |
| Doors | | Door removed at storage, SCW at wardrobe |
| Casework | Wood | Shelf only |

Room Number: A114 Room Name: 5th & 6th Grade Language Arts Classroom

| Component | Material | Comments |
|---------------------|--------------|---|
| Floor | Carpet | |
| Ceiling | Gyp Bd | 8' high |
| Walls | CMU | CMU at 3 walls, new exterior wall |
| Doors | HM & SCW | HM to exterior and SCW to commons |
| Casework | P-Lam & wood | Residential casework |
| Windows & Coverings | HM | New exterior insulated windows with horizontal blinds |

Room Number: A114A Room Name: Storage

| Component | Material | Comments |
|-----------|----------|--|
| Floor | Carpet | |
| Ceiling | Gyp Bd | |
| Walls | CMU | |
| Doors | SCW | SCW at wardrobe |
| Casework | Wood | Painted wood in wardrobe, FF&E for remainder of casework |

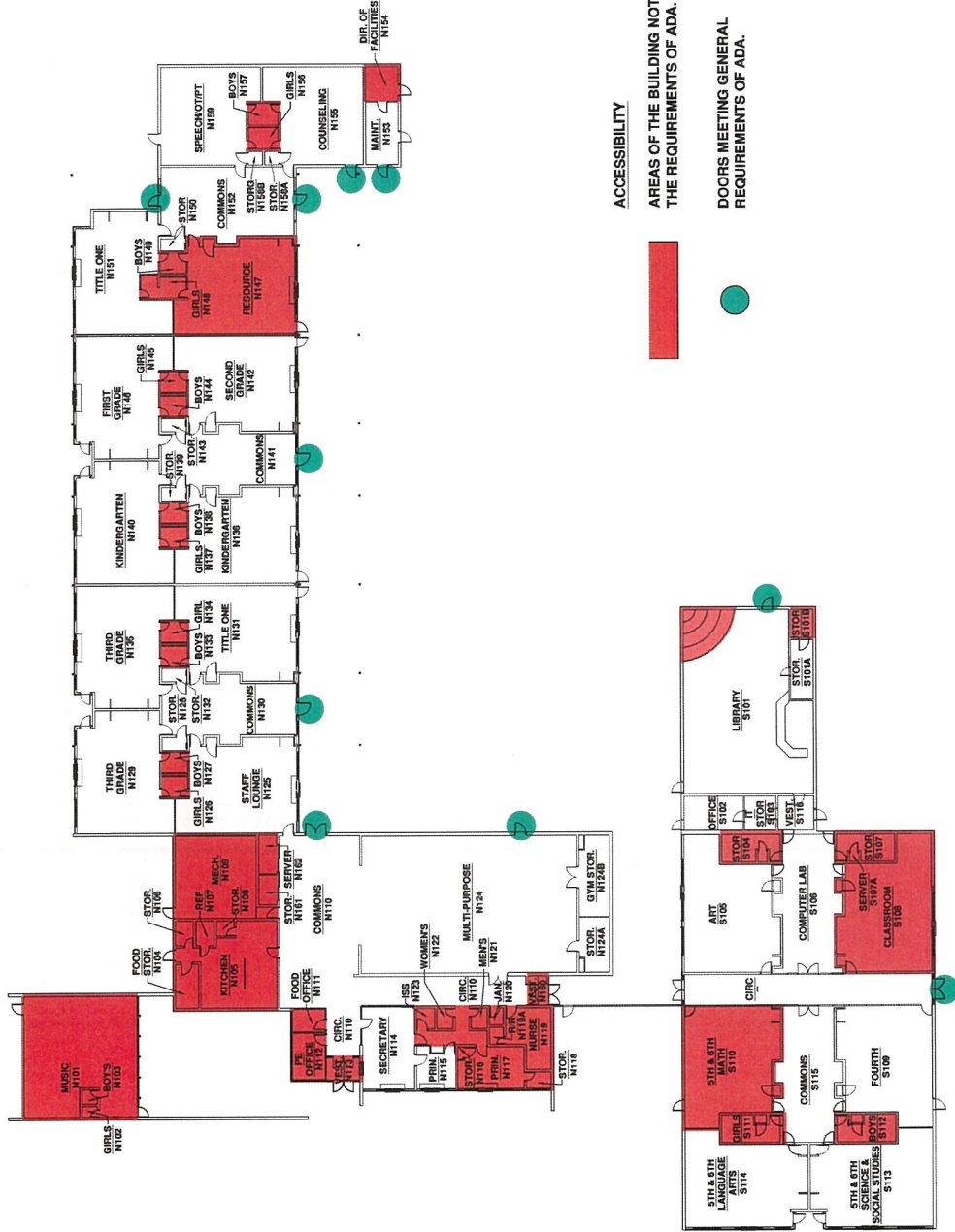


Room Number: A115 Room Name: Pod Commons

| Component | Material | Comments |
|---------------|------------|--|
| Floor | Carpet | |
| Ceiling | 12x12 tile | 8' high |
| Walls | Brick & HM | HM frames and plywood panels at west wall |
| Doors | SCW | SCW to hallway, and bi-pass to storage closet |
| Casework | Wood | Shelves in alcove and storage closet |
| Special Notes | | Natural daylighting by Solatube, Heaters are located on hallway wall, lockers are not installed and are subject to falling |

Room Number: A116 Room Name: Hall

| Component | Material | Comments |
|-----------|-------------|---|
| Floor | Carpet | |
| Ceiling | Wood | Painted plywood soffit panels – possibly and outdoor space in the past. |
| Walls | CMU & HM/GI | CMU on east side and HM & Glass on west side |
| Doors | HM | HM doors with 1/2 glass and HM frames. Glass lites on one side of doors |



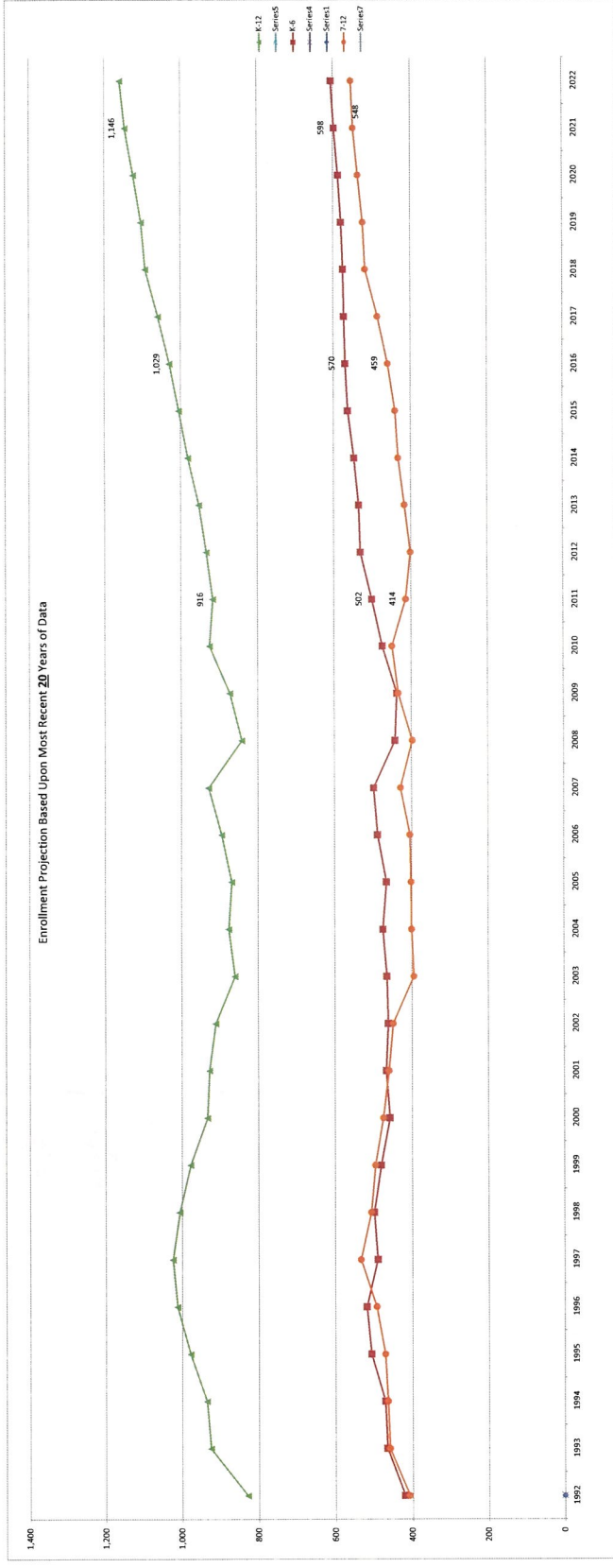
FLOOR PLAN

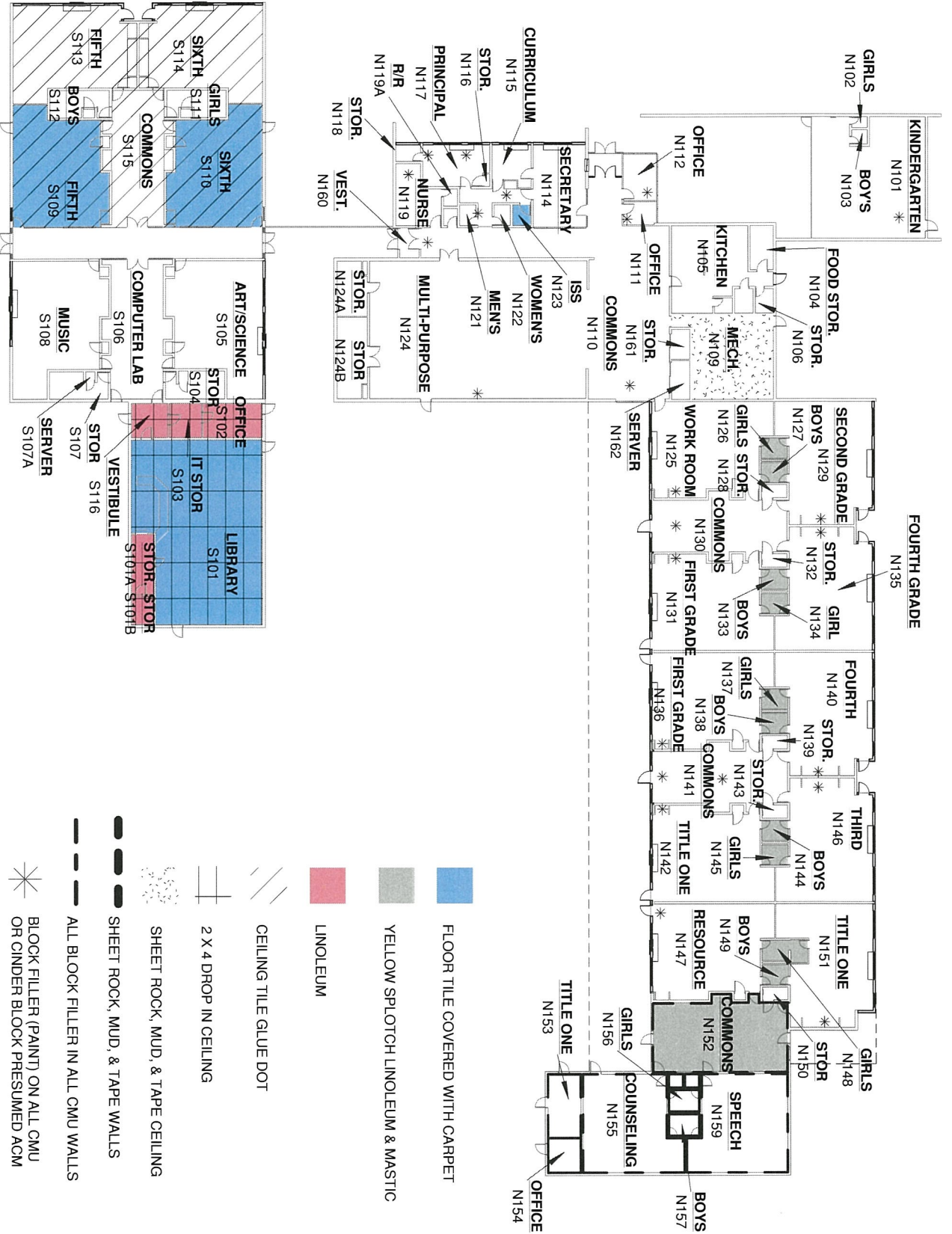
Laramie 2
20 Years Trailing Data

Exhibit F

| Grade | Enrollment Projection Based Upon Enrollment from 1992 to 2011 | | | | | | | | | | Actual Enrollment | | | | | | | | | | Projected Enrollment | | | | | | | | | | 2022 | AVG Sur Rate | | | |
|-------|---|------|------|------|-------|-------|-------|------|------|------|-------------------|------|------|------|------|------|------|------|------|------|----------------------|------|------|-------|-------|-------|-------|-------|-------|-------|-------|--------------|------|-------|-----|
| | 1992 | 1993 | 1994 | 1995 | 1996 | 1997 | 1998 | 1999 | 2000 | 2001 | 2002 | 2003 | 2004 | 2005 | 2006 | 2007 | 2008 | 2009 | 2010 | 2011 | 2012 | 2013 | 2014 | 2015 | 2016 | 2017 | 2018 | 2019 | 2020 | 2021 | | | 2022 | | |
| K | 47 | 70 | 466 | 471 | 507 | 510 | 490 | 481 | 458 | 467 | 462 | 465 | 475 | 466 | 489 | 499 | 443 | 438 | 475 | 502 | 531 | 535 | 547 | 563 | 570 | 573 | 575 | 590 | 567 | 598 | 605 | 420 | 598 | | |
| 1 | 54 | 56 | 72 | 67 | 64 | 51 | 61 | 65 | 71 | 63 | 61 | 60 | 65 | 63 | 59 | 63 | 64 | 66 | 64 | 420 | 414 | 401 | 417 | 433 | 441 | 450 | 446 | 517 | 523 | 536 | 548 | 554 | 395 | 548 | |
| 2 | 75 | 62 | 59 | 76 | 72 | 72 | 95 | 68 | 68 | 57 | 61 | 62 | 68 | 68 | 81 | 89 | 59 | 64 | 82 | 78 | 73 | 77 | 77 | 70 | 64 | 93 | 84 | 93 | 95 | 99 | 100 | 98 | 99 | 102 | 99 |
| 3 | 58 | 80 | 87 | 94 | 71 | 82 | 64 | 80 | 55 | 76 | 75 | 60 | 70 | 75 | 72 | 54 | 49 | 79 | 71 | 70 | 76 | 80 | 84 | 84 | 84 | 82 | 83 | 86 | 87 | 87 | 83 | 83 | 83 | 103 | 103 |
| 4 | 73 | 54 | 63 | 97 | 85 | 74 | 85 | 60 | 84 | 55 | 79 | 82 | 66 | 67 | 76 | 86 | 66 | 59 | 55 | 82 | 74 | 74 | 84 | 88 | 88 | 86 | 87 | 86 | 90 | 91 | 91 | 91 | 105 | 105 | |
| 5 | 62 | 79 | 59 | 72 | 104 | 83 | 79 | 82 | 57 | 81 | 62 | 76 | 91 | 65 | 73 | 80 | 79 | 68 | 65 | 59 | 85 | 77 | 76 | 87 | 87 | 91 | 92 | 89 | 90 | 90 | 93 | 94 | 104 | 104 | |
| 6 | 67 | 74 | 82 | 78 | 81 | 111 | 87 | 77 | 77 | 73 | 88 | 54 | 75 | 86 | 76 | 75 | 63 | 80 | 74 | 67 | 62 | 89 | 81 | 80 | 92 | 95 | 96 | 94 | 95 | 94 | 94 | 98 | 105 | 105 | |
| 7 | 87 | 85 | 77 | 86 | 80 | 86 | 102 | 90 | 77 | 79 | 75 | 78 | 55 | 64 | 79 | 80 | 73 | 70 | 84 | 75 | 68 | 63 | 91 | 82 | 82 | 93 | 97 | 98 | 95 | 97 | 96 | 102 | 102 | 96 | |
| 8 | 64 | 97 | 83 | 80 | 87 | 89 | 86 | 102 | 87 | 76 | 73 | 75 | 89 | 59 | 64 | 82 | 83 | 78 | 73 | 77 | 77 | 70 | 64 | 93 | 84 | 83 | 95 | 99 | 100 | 98 | 99 | 102 | 102 | 99 | |
| 9 | 74 | 74 | 95 | 79 | 84 | 87 | 77 | 83 | 93 | 78 | 69 | 66 | 68 | 81 | 52 | 68 | 80 | 74 | 72 | 63 | 73 | 73 | 66 | 61 | 88 | 80 | 79 | 90 | 94 | 95 | 93 | 93 | 095 | 095 | |
| 10 | 59 | 71 | 61 | 89 | 76 | 83 | 80 | 66 | 82 | 78 | 67 | 54 | 38 | 64 | 74 | 50 | 59 | 76 | 71 | 67 | 58 | 67 | 64 | 63 | 61 | 56 | 81 | 73 | 73 | 63 | 96 | 87 | 032 | | |
| 11 | 57 | 58 | 66 | 59 | 85 | 78 | 75 | 78 | 59 | 76 | 77 | 68 | 56 | 48 | 60 | 74 | 40 | 56 | 76 | 65 | 64 | 55 | 64 | 63 | 61 | 61 | 61 | 77 | 70 | 69 | 56 | 87 | 032 | | |
| 12 | 828 | 925 | 935 | 978 | 1,012 | 1,024 | 1,006 | 977 | 933 | 927 | 911 | 850 | 876 | 868 | 894 | 928 | 841 | 872 | 925 | 910 | 932 | 932 | 980 | 1,041 | 1,028 | 1,052 | 1,092 | 1,103 | 1,124 | 1,146 | 1,159 | 1,159 | max | max | |
| TOTAL | 420 | 466 | 471 | 507 | 510 | 490 | 481 | 458 | 467 | 462 | 465 | 475 | 466 | 489 | 499 | 443 | 438 | 475 | 502 | 531 | 535 | 547 | 563 | 570 | 573 | 575 | 590 | 567 | 598 | 605 | 420 | 598 | | | |
| K-12 | 420 | 466 | 471 | 507 | 510 | 490 | 481 | 458 | 467 | 462 | 465 | 475 | 466 | 489 | 499 | 443 | 438 | 475 | 502 | 531 | 535 | 547 | 563 | 570 | 573 | 575 | 590 | 567 | 598 | 605 | 420 | 598 | | | |
| 2-12 | 420 | 466 | 471 | 507 | 510 | 490 | 481 | 458 | 467 | 462 | 465 | 475 | 466 | 489 | 499 | 443 | 438 | 475 | 502 | 531 | 535 | 547 | 563 | 570 | 573 | 575 | 590 | 567 | 598 | 605 | 420 | 598 | | | |
| K-6 | 828 | 925 | 935 | 978 | 1,012 | 1,024 | 1,006 | 977 | 933 | 927 | 911 | 850 | 876 | 868 | 894 | 928 | 841 | 872 | 925 | 910 | 932 | 932 | 980 | 1,041 | 1,028 | 1,052 | 1,092 | 1,103 | 1,124 | 1,146 | 1,159 | 1,159 | 828 | 1,146 | |
| Year | 1992 | 1993 | 1994 | 1995 | 1996 | 1997 | 1998 | 1999 | 2000 | 2001 | 2002 | 2003 | 2004 | 2005 | 2006 | 2007 | 2008 | 2009 | 2010 | 2011 | 2012 | 2013 | 2014 | 2015 | 2016 | 2017 | 2018 | 2019 | 2020 | 2021 | 2022 | 2022 | 2022 | 2022 | |

Configuration
Oct 1 of Year





1
A1.04s

PINE BLUFFS ELEMENTARY SCHOOL (for 8.5x11)
NTS

- FLOOR TILE COVERED WITH CARPET
- YELLOW SPLITCH LINOLEUM & MASTIC
- LINOLEUM
- CEILING TILE GLUE DOT
- 2 X 4 DROP IN CEILING
- SHEET ROCK, MUD, & TAPE CEILING
- SHEET ROCK, MUD, & TAPE WALLS
- ALL BLOCK FILLER IN ALL CMU WALLS
- BLOCK FILLER (PAINT) ON ALL CMU OR CINDER BLOCK PRESUMED ACM

ASBESTOS LOCATION LEGEND
NTS

PINE BLUFFS ELEM.

Project number 051149
Date 11-19-2010

A1.04s

TOBIN & ASSOCIATES

1820 DILLON AVENUE, SUITE 200A PHONE: 307-632-3144
CHEYENNE, WYOMING 82003 FAX: 307-632-6645

**LCSD# 2
Asbestos
Location Maps**

THESE DOCUMENTS AND HAVE BEEN PREPARED BASED ON INFORMATION SUBMITTED IN PART BY OTHERS WHILE THIS INFORMATION IS BELIEVED TO BE RELIABLE. THE ARCHITECT IS NOT RESPONSIBLE FOR ITS ACCURACY, NOR FOR ERRORS OR OMISSIONS WHICH MAY HAVE BEEN INCORPORATED INTO THIS DOCUMENT AS A RESULT.



Van Tilburg, Banvard & Soderbergh, AIA
Architecture Planning Interiors
Gary Prager, AIA, LEED AP Principal Architect
1860 Blake Street, Suite 170
Denver, Colorado 80202
Phone: 303-675-0041
Fax: 303-675-0052
Website: www.vtbs.com

